



Product Information

Customer : G/A

DATE : 16 Mar. 2010

SAMSUNG TFT-LCD**MODEL : LTA400HF06**

The information Described in this Specification is Preliminary and can be charged without prior notice

NOTE :

Development Team 3, LCD Business
Samsung Electronics Co . , LTD.



SAMSUNG TFT-LCD

MODEL

LTA400HF06

Doc. No

05-000-G-100316

Page

1 / 28

Contents

Revision History	(3)
General Description	(4)
General Information	(4)
1. Absolute Maximum Ratings	(5)
2. Optical Characteristics	(6)
3. Electrical Characteristics	(9)
3.1 TFT LCD Module	
3.2 Back Light Unit	
4. Block Diagram	(11)
5. Input Terminal Pin Assignment	(12)
5.1 Input Signal & Power	
5.2 Inverter Input Pin Configuration	
5.3 Inverter Input Power Sequence & Specification	
5.4 LVDS Interface	
5.5 Input Signals, Basic Display Colors and Gray Scale of Each Color	
6. Interface Timing	(19)
6.1 Timing Parameters (DE only mode)	
6.2 Timing Diagrams of interface Signal (DE only mode)	
6.3 Power ON/OFF Sequence	
7. Outline Dimension	(22)
8. Packing	(24)
9. Marking & Others	(25)
10. General Precaution	(26)
10.1 Handling	
10.2 Storage	
10.3 Operation	
10.4 Operation Condition Guide	
10.5 Others	

MODEL

LTA400HF06

Doc. No

05-000-G-100316

Page

2 / 28

*** Revision History**

Date	Rev. No	Page	Summary
Mar. 16, 2010	000	-	First Issued

www.panelook.com

MODEL	LTA400HF06	Doc. No	05-000-G-100316	Page	3 / 28
-------	------------	---------	-----------------	------	--------

General Description

Description

LTA400HF06 is a color active matrix liquid crystal display (LCD) that uses amorphous silicon TFT (Thin Film Transistor) as switching components. This model is composed of a TFT LCD panel, a driver circuit and a back light unit. The resolution of a 40.0" is 1920 x 1080 and this model can display up to 1.07 Giga colors with wide viewing angle of 89° or higher in all directions. This panel is intended to support applications to provide an excellent performance for Flat Panel Display such as Home-alone Multimedia TFT-LCD TV, Display terminals for AV application products, and High Definition TV (HDTV).

Features

- RoHS compliance (Pb-free)
- High contrast ratio, high aperture ratio, fast response time
- SPVA (Super Patterned Vertical Align) mode
- Wide viewing angle ($\pm 89^\circ$)
- Full HD (1920 x 1080 pixels) resolution (16:9)
- Low Power consumption
- 10 CCFTs (Cold Cathode Fluorescent Tube)
- mini-LVDS (Low Voltage Differential Signaling) interface

General Information

Items	Specification	Unit	Note
Module Size	952(H _{TYP}) x 551(V _{TYP})	mm	±1.0mm
	61.2(D _{MAX})		
Weight	9000(Max)	g	
Pixel Pitch	0.15375(H) * 3 x 0.42125(V)	mm	
Active Display Area	885.6(H) x 498.15(V)	mm	
Surface Treatment	Haze 4.5%, Hard-coating (3H)		
Display Colors	8bit + 2bit FRC -1.07G	colors	
Number of Pixels	1920 x 1080	pixel	
Pixel Arrangement	RGB vertical stripe		
Display Mode	Normally Black		
Luminance of White	430	cd/m ²	Typ.

MODEL

LTA400HF06

Doc. No

05-000-G-100316

Page

4 / 28

1. Absolute Maximum Ratings

If the condition exceeds maximum ratings, it can cause malfunction or unrecoverable damage to the device.

Item	Symbol	Min.	Max.	Unit	Note
Power Supply Voltage	V_{DD}	GND-0.5	13	V	(1)
Storage temperature	T_{STG}	-20	65	°C	(2)
Operating Temperature	T_{OPR}	0	50	°C	(2)
Panel surface temperature	T_{SUR}	0	65	°C	(3)
Shock (non - operating)	S_{NOP}	-	50	G	(4)
Vibration (non - operating)	V_{NOP}	-	1.5	G	(5)

Note (1) $T_a = 25 \pm 2$ °C

(2) Temperature and relative humidity range are shown in the figure below.

a. 93.8 % RH Max. ($T_a \leq 40$ °C)

b. Maximum wet-bulb temperature at 40 °C or less. ($T_a \leq 40$ °C)

c. No condensation

(3) Polarizer will not be damaged in this range, even though abnormal visual problems occur in T_{SUR} range.

(4) 11ms, sine wave, one time for $\pm X$, $\pm Y$, $\pm Z$ axis

(5) 10-300 Hz, Sweep rate 10min, 30min for X,Y,Z axis

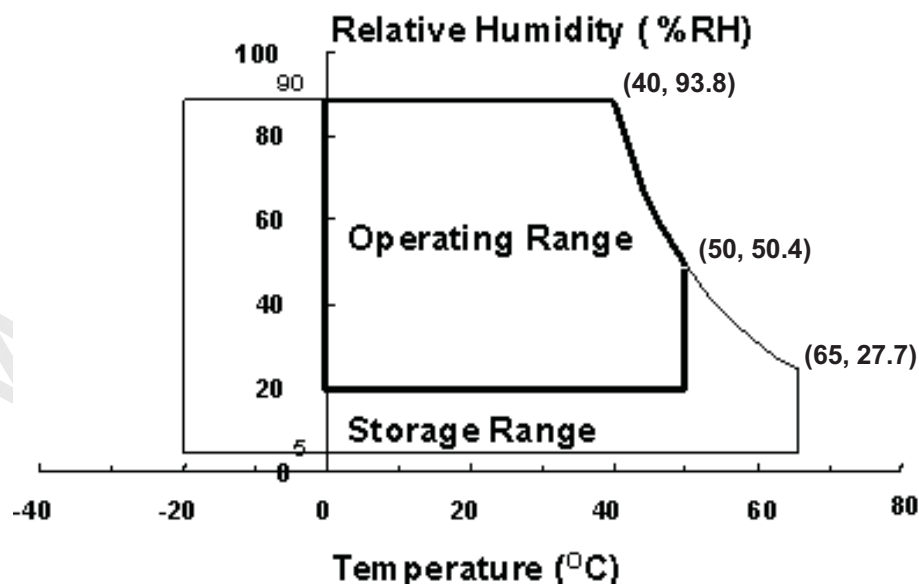


Fig. Temperature and Relative humidity range

2. Optical Characteristics

The optical characteristics should be measured in a dark room or equivalent.

Measuring equipment : TOPCON BM-7,SPECTRORADIOMETER SR-3

($T_a = 25 \pm 2^\circ\text{C}$, $V_{DD}=12\text{V}$, $f_v=60\text{Hz}$, $f_{DCLK}=148.5\text{MHz}$, $\text{Dim} = 100\%$)

Item	Symbol	Condition	Min.	Typ.	Max.	Unit	Note	
Contrast Ratio (Center of screen)	C/R		*3000	5000	-		(3) SR-3	
Response Time	Rising	Tr	-	12	-	msec	(5) BM-7	
	Falling	Tf	-	6	-			
	G-to-G [AVE]	Tg	-	6.5	-			
Luminance of White (Center of screen)	Y_L	Normal $\theta_{L,R}=0$ $\theta_{U,D}=0$	360	430	-	cd/m ²	(6) SR-3	
Color Chromaticity (CIE 1931)	Red	Rx	Viewing Angle	0.643	TYP. -0.03	TYP. +0.03	(7),(8) SR-3	
		Ry		0.330				
	Green	Gx		0.284				
		Gy		0.609				
	Blue	Bx		0.148				
		By		0.058				
	White	Wx		0.280				
		Wy		0.285				
Color Gamut	-		-	72	-	%	(7) SR-3	
Color Temperature	-		-	10000	-	K	(7) SR-3	
Gamma	γ		-	2.2	-			
Viewing Angle	Hor.	θ_L	C/R \geq 10	79	89	-	Degree	(8) SR-3
		θ_R		79	89	-		
	Ver.	θ_U		79	89	-		
		θ_D		79	89	-		
Brightness Uniformity (9 Points)	B_{uni}		-	-	30	%	(4) SR-3	

* marked Items Value does not Specification above when "White stain" occurs at Center Point [Point ⑤ of Note 2.]

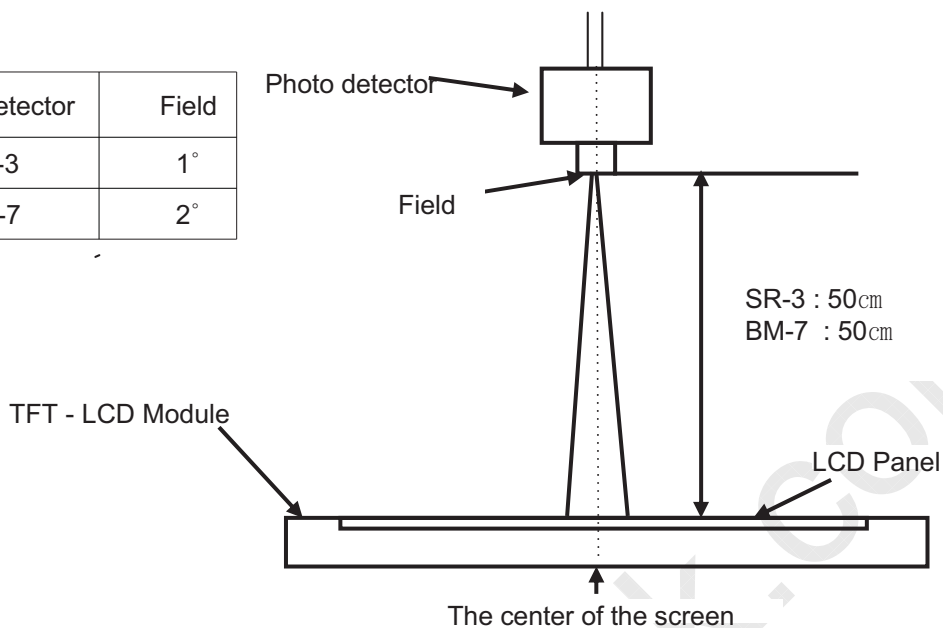
Note (1) Test Equipment Setup

The measurement should be executed in a stable, windless and dark room between 40min and 60min after lighting the back light at the given temperature for stabilization of the back light. This should be measured in the center of screen.

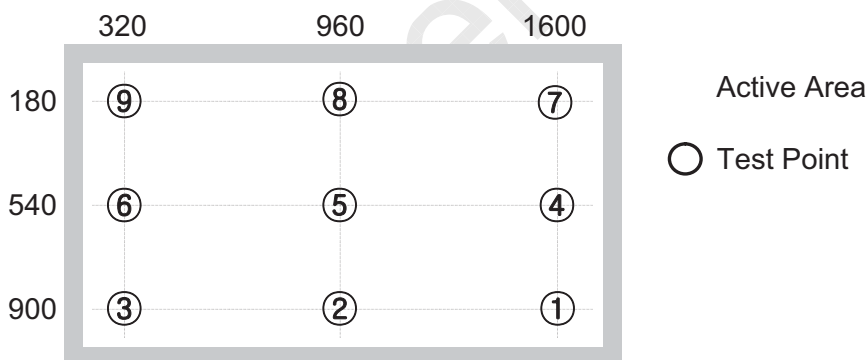
Single lamp current @ $V_{dim} = 100\%$
Environment condition : $T_a = 25 \pm 2^\circ\text{C}$

MODEL	LTA400HF06	Doc. No	05-000-G-100316	Page	6 / 28
-------	------------	---------	-----------------	------	--------

Photo detector	Field
SR-3	1°
BM-7	2°



Note (2) Definition of test point



Note (3) Definition of Contrast Ratio (C/R)

: Ratio of gray max (Gmax) & gray min (Gmin) at the center point ⑤ of the panel

$$C/R = \frac{G_{max}}{G_{min}}$$

Gmax : Luminance with all pixels white

Gmin : Luminance with all pixels black

MODEL	LTA400HF06	Doc. No	05-000-G-100316	Page	7 / 28
-------	------------	---------	-----------------	------	--------

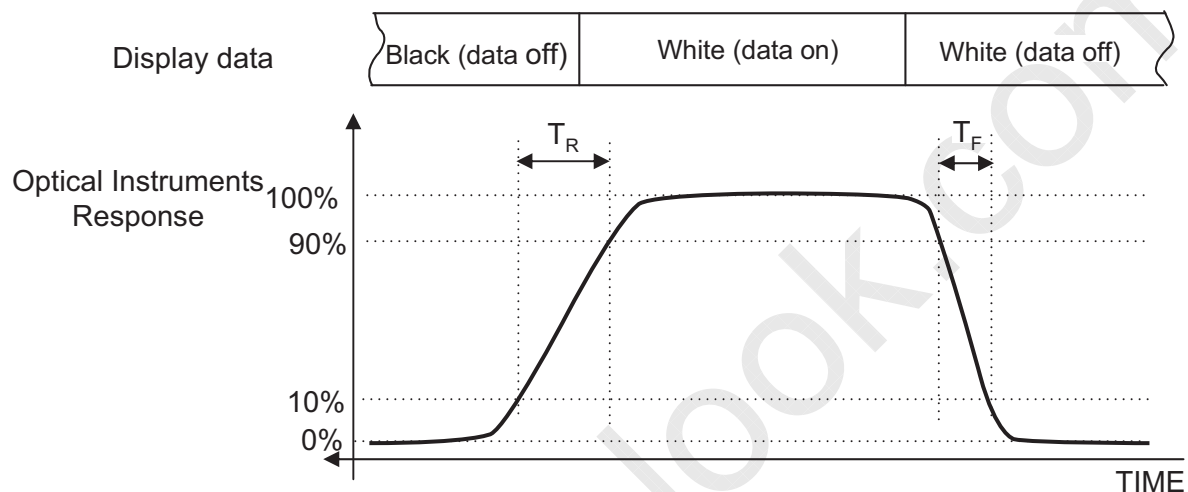
Note (4) Definition of 9 points brightness uniformity

$$B_{uni} = 100 * \frac{(B_{max} - B_{min})}{B_{max}}$$

B_{max} : Maximum brightness

B_{min} : Minimum brightness

Note (5) Definition of Response time : Sum of T_r, T_f



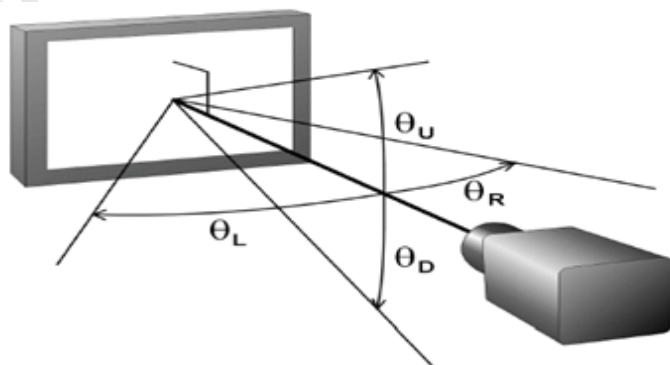
Note (6) Definition of Luminance of White : Luminance of white at center point ⑤

Note (7) Definition of Color Chromaticity (CIE 1931)

Color coordinate of Red, Green, Blue & White at center point ⑤

Note (8) Definition of Viewing Angle

: Viewing angle range ($C/R \geq 10$)



MODEL

LTA400HF06

Doc. No

05-000-G-100316

Page

8 / 28

3. Electrical Characteristics

3.1 TFT LCD Module

The connector for display data & timing signal should be connected.

$T_a = 25^\circ\text{C} \pm 2^\circ\text{C}$

Item	Symbol	Min.	Typ.	Max.	Unit	Note
Voltage of Power Supply	V_{DD}	11	12	13	V	(1)
Current of Power Supply	(a) Black	-	900	1080	mA	(2),(3)
	(b) White	-	920	1100		
	(c) Mosaic	-	950	1140		
	(4) Max Pattern	-	1600	1920		
Vsync Frequency	f_V	-	60	-	Hz	
Hsync Frequency	f_H	-	67.5	-	kHz	
Main Frequency	f_{DCLK}	-	148.5	-	MHz	
Rush Current	I_{RUSH}	-	-	5	A	(4)

Note (1) The ripple voltage should be controlled under 10% of V_{DD} .

(2) $f_V=60\text{Hz}$, $f_{DCLK} = 148.5\text{MHz}$, $V_{DD} = 12.0\text{V}$, DC Current.

(3) Power dissipation check pattern (LCD Module only)

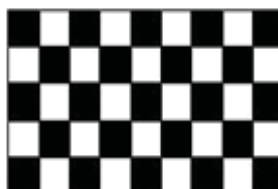
a) Black Pattern



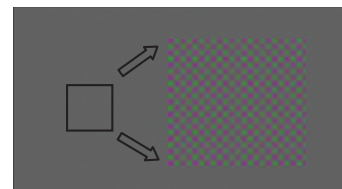
b) White Pattern



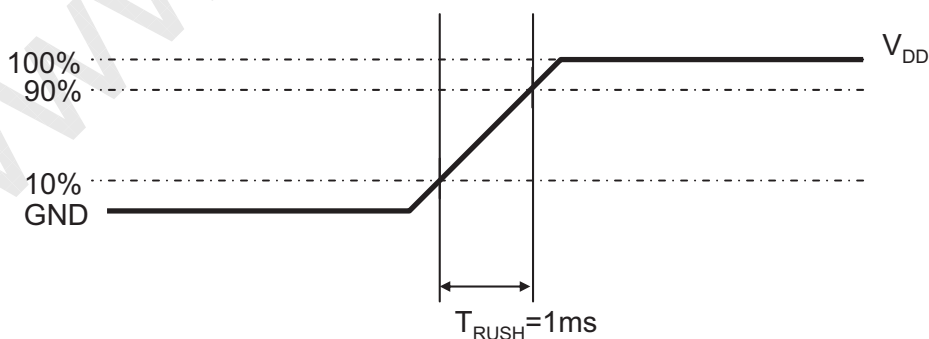
c) Mosaic



d)Max. Pattern



(4) Measurement Conditions



Rush Current I_{RUSH} can be measured when T_{RUSH} is 1ms

MODEL

LTA400HF06

Doc. No

05-000-G-100316

Page

9 / 28

3.2 Back Light Unit

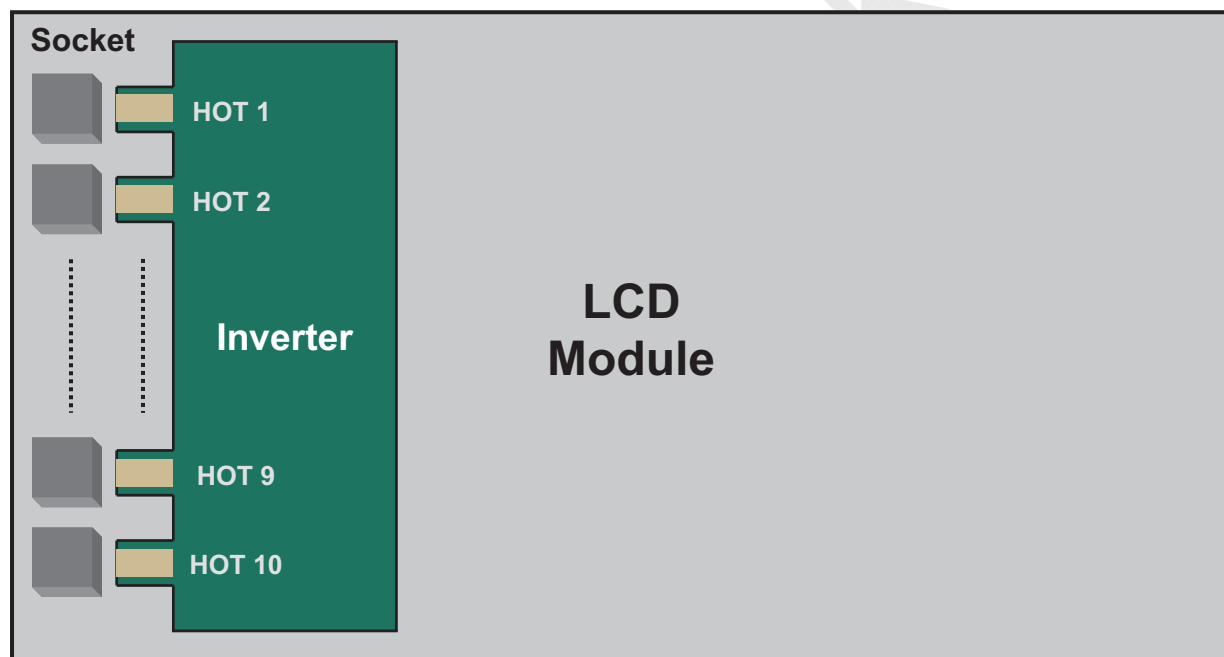
The back light unit contains 10 CCFTs (Cold Cathode Fluorescent Tube).
The characteristics of lamps are shown in the following tables.

$T_a = 25 \pm 2^\circ\text{C}$

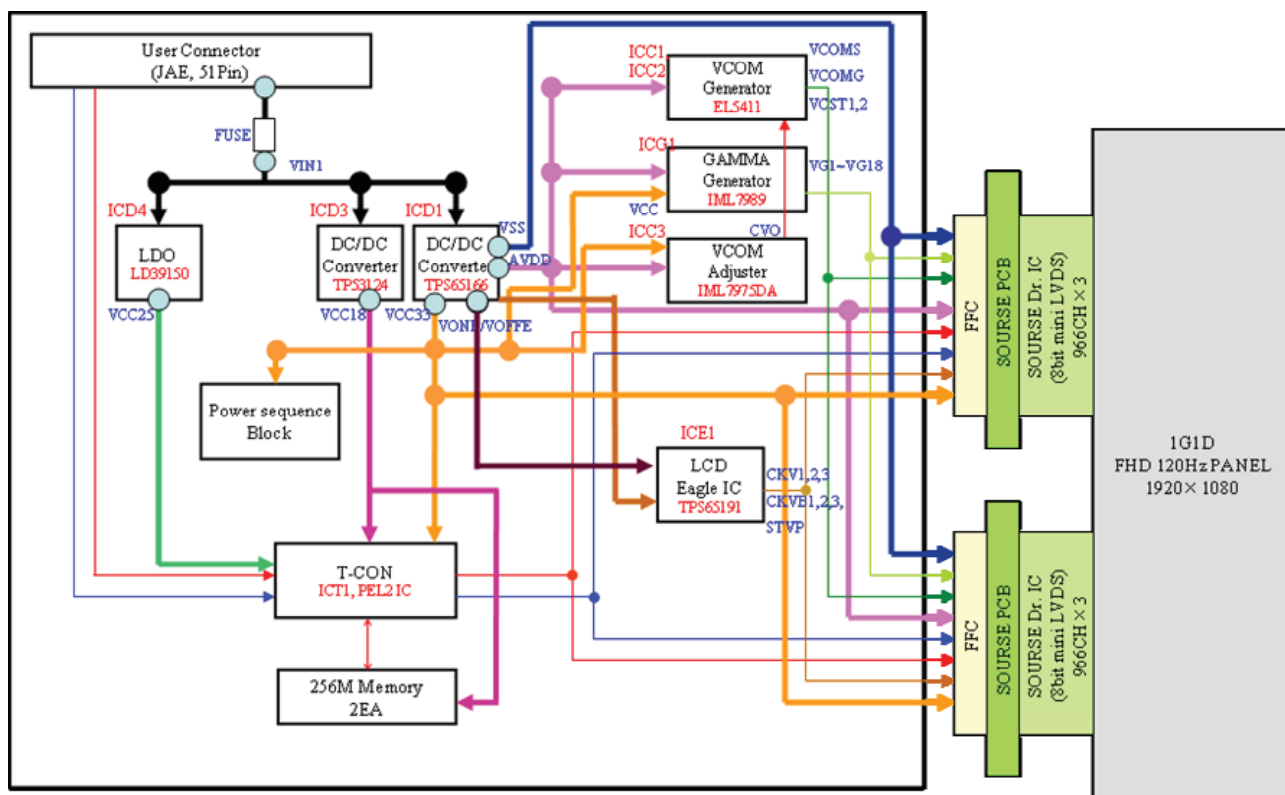
Item	Symbol	Min.	Typ.	Max.	Unit	Note
Operating Life Time	Hr	50,000	-	-	Hour	(1)
Lamp Current	Lc	13.0	14.0	15.0	mA	-

Note (1) It is defined as the time to take until the brightness reduces to 50% of its original value.

[Operating condition : $T_a = 25 \pm 2^\circ\text{C}$, $I_L = 14.0 \text{ mA (typ.)}$, For single lamp only.]



4. Block Diagram



MODEL

LTA400HF06

Doc. No

05-000-G-100316

Page

11 / 28

5. Input Terminal Pin Assignment

5.1. Input Signal & Power

5.1.1 Pin Connector : JAE(FI-RE51S)

PIN No.	Signal	Description	PIN No.	Signal	Description
1	Power	V _{DD}	26	RE[0]P	Even LVDS Signal +
2	Power	V _{DD}	27	RE[1]N	Even LVDS Signal -
3	Power	V _{DD}	28	RE[1]P	Even LVDS Signal +
4	Power	V _{DD}	29	RE[2]N	Even LVDS Signal -
5	Power	V _{DD}	30	RE[2]P	Even LVDS Signal +
6	N.C.	N.C.	31	GND	GND
7	GND	GND	32	RECLK-	Even LVDS Clock-
8	GND	GND	33	RECLK+	Even LVDS Clock+
9	GND	GND	34	GND	GND
10	RO[0]N	Odd LVDS Signal -	35	RE[3]N	Even LVDS Signal -
11	RO[0]P	Odd LVDS Signal +	36	RE[3]P	Even LVDS Signal +
12	RO[1]N	Odd LVDS Signal -	37	RE[4]N	Even LVDS Signal -
13	RO[1]P	Odd LVDS Signal +	38	RE[4]P	Even LVDS Signal +
14	RO[2]N	Odd LVDS Signal -	39	GND	GND
15	RO[2]P	Odd LVDS Signal +	40	SCL	I2C SCL
16	GND	GND	41	SDA	I2C SDA
17	ROCLK-	Odd LVDS CLK -	42	VSYNC	Balance board Sync Signal
18	ROCLK+	Odd LVDS CLK +	43	B_INT	Bus Switching
19	GND	GND	44	N.C.	N.C.
20	RO[3]N	Odd LVDS Signal -	45	N.C.	N.C.
21	RO[3]P	Odd LVDS Signal +	46	SA_MODE	SA Mode Sel Signal
22	RO[4]N	Odd LVDS Signal -	47	N.C.	N.C.
23	RO[4]P	Odd LVDS Signal +	48	N.C.	N.C.
24	GND	GND	49	N.C.	N.C.
25	RE[0]N	Even LVDS Signal -	50	TCON_RDY	T-Con Ready
			51	SEL1	SEC Internal Use Only

■ Option Pin Description

- B_INT : I2C BUS Switching Pull down 100Ω/10kΩ

L/OPEN	SDA/SCL LINE BECOME HI-Z
H	USER CAN ACCESS EEPROM

- SA_MODE : Direct 10Ω

Operation	Description
Low	SET MODE
High	SA_MODE

- TCON_RDY : Direct 100Ω

Operation	Description
Low → High	Normal Operation
High → Low	Error Operation

- SCL : Pull up 100Ω/4.7kΩ

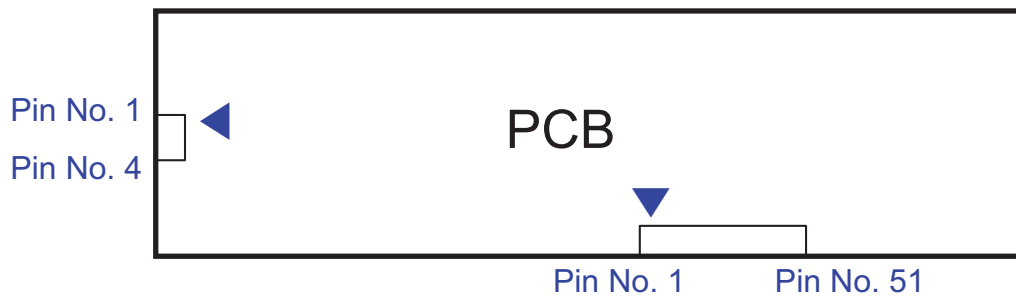
- SDA : Pull up 100Ω/4.7kΩ

- VSYNC : Direct 100Ω

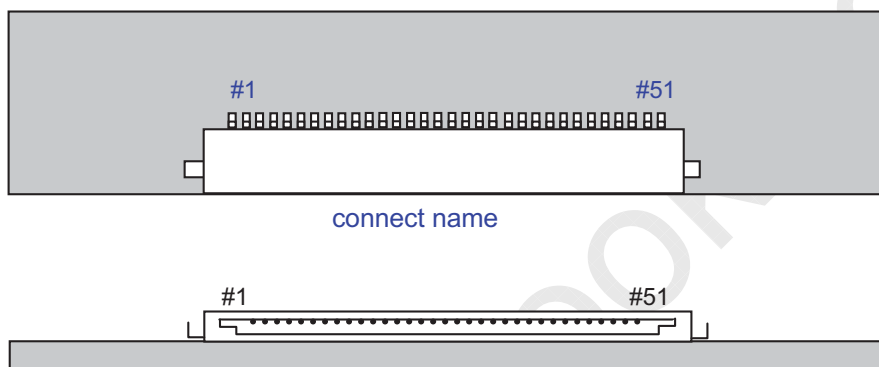
■ DCC Table

LUT No.	Description
DCC1	for 120Hz
DCC2	for 120Hz @ Low temp.
DCC3, 4	Not use
DCC5	for 100Hz
DCC6	for 100Hz @ Low temp.
DCC7	Not use
DCC8	DCC off

Note(1) Pin number starts from Right side



A. 51 Pin



B. 4 Pin

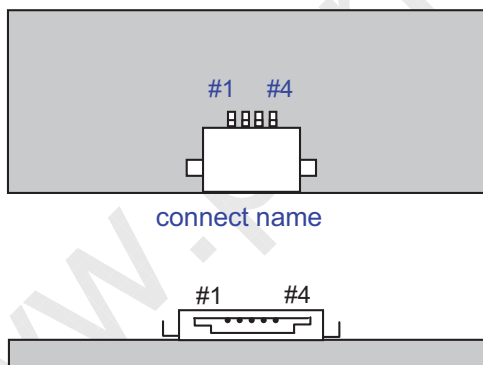


Fig. Connector diagram

- a. All GND pins should be connected together and also be connected to the LCD's metal chassis.
- b. All power input pins should be connected together.
- c. All NC pins should be separated from other signal or power.

MODEL	LTA400HF06	Doc. No	05-000-G-100316	Page	14 / 28
-------	------------	---------	-----------------	------	---------

5.2. Inverter Input Pin Configuration

Connector : 20022WR-14AML

Pin No.	Pin Configuration(FUNCTION)
1	24V
2	24V
3	24V
4	24V
5	24V
6	GND
7	GND
8	GND
9	GND
10	GND
11	Inverter Operation Status Output
12	Inverter On/Off Control Signal
13	No Connection
14	External Dimming Control Signal

MODEL

LTA400HF06

Doc. No

05-000-G-100316

Page

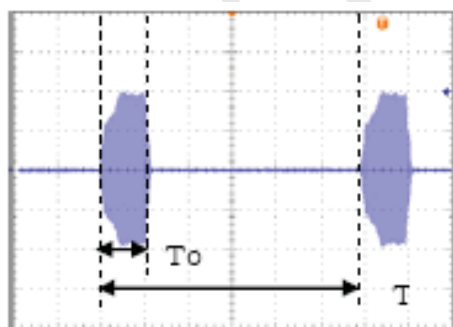
15 / 28

5.3. Inverter Input Power Sequence & Specification

Items	Symbol	Conditions	Specifications			Unit	Note
			Min.	Typ.	Max.		
Input Voltage	V _{in}	-	21.6	24.0	26.4	V	Ta=25±3°C
Input Current	I _{SAT}	V _{in} =24V EX_DIM=100%	4.25	5.0	5.75	A	-
Lamp Current	I _o	V _{in} =24V EX_DIM=100%	13.0	14.0	15.0	mArms	-
Operating Frequency	F _o	V _{in} =24V EX_DIM=100%	50	52	54	kHz	-
Backlight On/Off	ENA	ON	2.4	-	5.25	V	-
		OFF	-0.3	-	0.8		
Dimming Duty Output	D _{max}	V _{in} =24V EX_DIM=100%	100%	-	-	%	Note 1
	D _{min}		15	20	25		-
	D _{min}		10.0	-	-		Note 2
Open Lamp Voltage	V _{open}	V _{in} =24V EX_DIM=100%	1600	-	-	Vrms	Note 3
Striking Time	T _{st}	V _{in} =24V EX_DIM=100%	1.0	1.5	2.0	sec	-
EX_DIM Frequency	F _{EX_DIM}	V _{in} =24.0V	120	150	180	Hz	-
PWM Signal Amplitude	V _{pwm}	High (On)	2.4	-	5.25	V	-
		Low (Off)	-0.3	-	0.4		

※ All data was approved after running 120minutes with LCM.

Note1. Duty Measurement [Duty(%) = T_{on} / T x 100]



Note 2. There art not shut-down and flicker at 10%@150Hz

There is not shut-down at 5%@75Hz

Note 3. Measurement Method : Check Vs on BLU Remaining all Lamps

MODEL	LTA400HF06	Doc. No	05-000-G-100316	Page	16 / 28
-------	------------	---------	-----------------	------	---------

5.4 LVDS Interface

	LVDS pin	Odd Data	Even Data
TxOUT/RxIN0	TxIN/RxOUT0	R4	R4
	TxIN/RxOUT1	R5	R5
	TxIN/RxOUT2	R6	R6
	TxIN/RxOUT3	R7	R7
	TxIN/RxOUT4	R8	R8
	TxIN/RxOUT6	R9	R9
	TxIN/RxOUT7	G4	G4
TxOUT/RxIN1	TxIN/RxOUT8	G5	G5
	TxIN/RxOUT9	G6	G6
	TxIN/RxOUT12	G7	G7
	TxIN/RxOUT13	G8	G8
	TxIN/RxOUT14	G9	G9
	TxIN/RxOUT15	B4	B4
	TxIN/RxOUT18	B5	B5
TxOUT/RxIN2	TxIN/RxOUT19	B6	B6
	TxIN/RxOUT20	B7	B7
	TxIN/RxOUT21	B8	B8
	TxIN/RxOUT22	B9	B9
	TxIN/RxOUT24	HSYNC	HSYNC
	TxIN/RxOUT25	VSYNC	VSYNC
	TxIN/RxOUT26	DEN	DEN
TxOUT/RxIN3	TxIN/RxOUT27	R2	R2
	TxIN/RxOUT5	R3	R3
	TxIN/RxOUT10	G2	G2
	TxIN/RxOUT11	G3	G3
	TxIN/RxOUT16	B2	B2
	TxIN/RxOUT17	B3	B3
	TxIN/RxOUT23	RESERVED	RESERVED
TxIn/RxIn4	TxIn/RxOUT28	R0	R0
	TxIn/RxOUT29	R1	R1
	TxIn/RxOUT30	G0	G0
	TxIn/RxOUT31	G1	G1
	TxIn/RxOUT32	B0	B0
	TxIn/RxOUT33	B1	B1
	TxIn/RxOUT34	RESERVED	RESERVED

MODEL

LTA400HF06

Doc. No

05-000-G-100316

Page

17 / 28

6. Interface Timing

6.1 Timing Parameters (DE only mode)

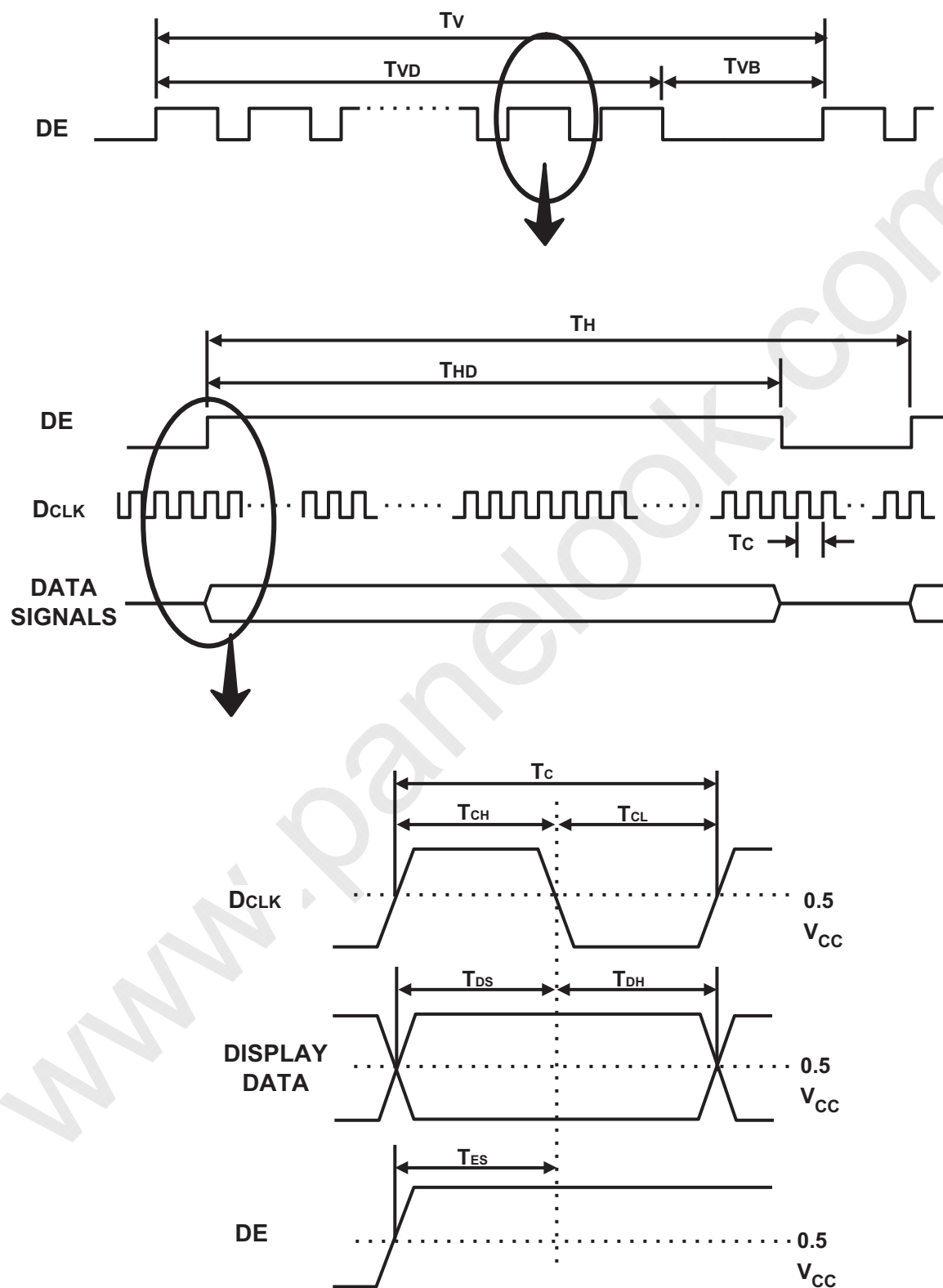
SIGNAL	ITEM	SYMBOL	MIN.	TYP.	MAX.	Unit	NOTE
Clock	Frequency	$1/T_C$	130	148.5	155	MHz	-
Hsync		F_H	50	67.5	75	KHz	-
Vsync		F_V	47	60	63	Hz	-
Vertical Display Term	Active Display Period	T_{VD}	-	1080	-	lines	-
	Vertical Total	T_{VB}	1100	1125	1480	Lines	-
Horizontal Display Term	Active Display Period	T_{HD}	-	1920	-	clocks	-
	Horizontal Total	T_H	2154	2200	2450	clocks	-

Note) This product is DE only mode. The input of Hsync & Vsync signal does not have an effect on normal operation.

(1) Test Point : TTL control signal and CLK at LVDS Tx input terminal in system

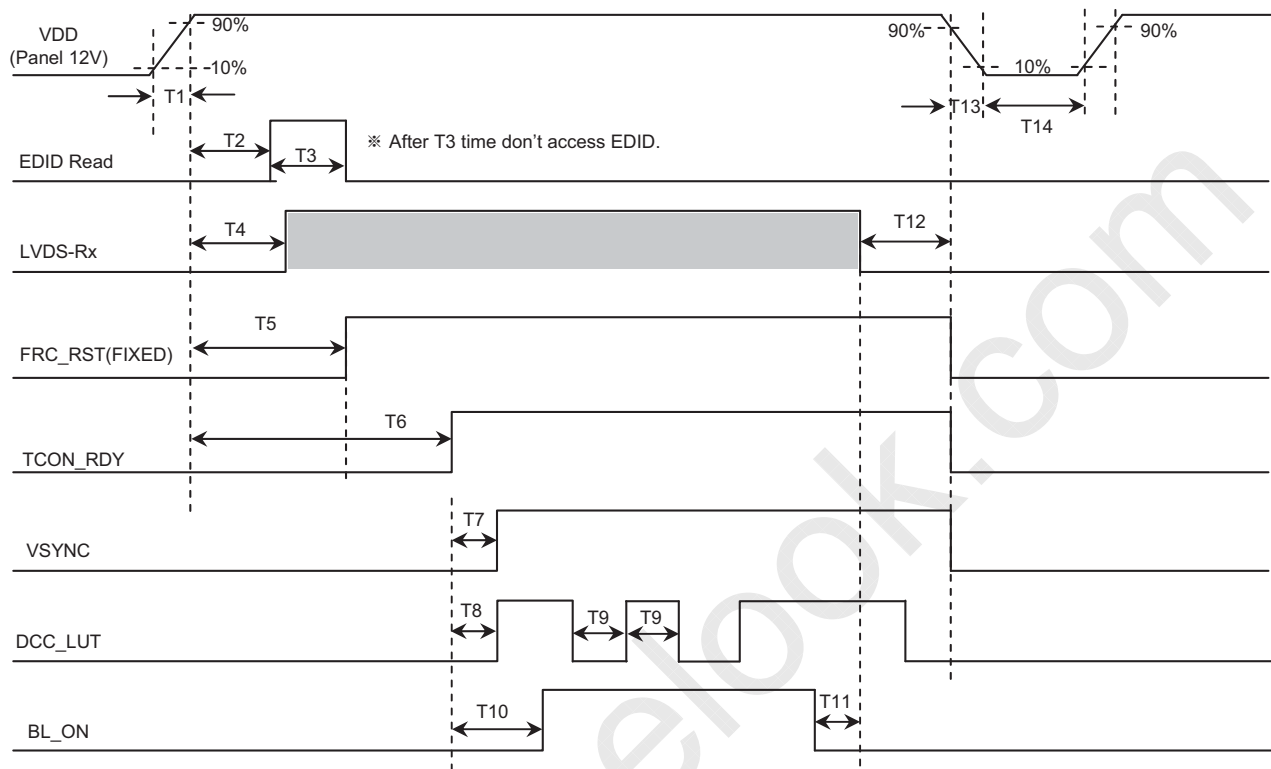
(2) Internal $V_{DD} = 3.3V$

6.2 Timing diagrams of interface signal (DE only mode)



6.3 Power ON/OFF Sequence

To prevent a latch-up or DC operation of the LCD Module, the power on/off sequence should be as the diagram below.

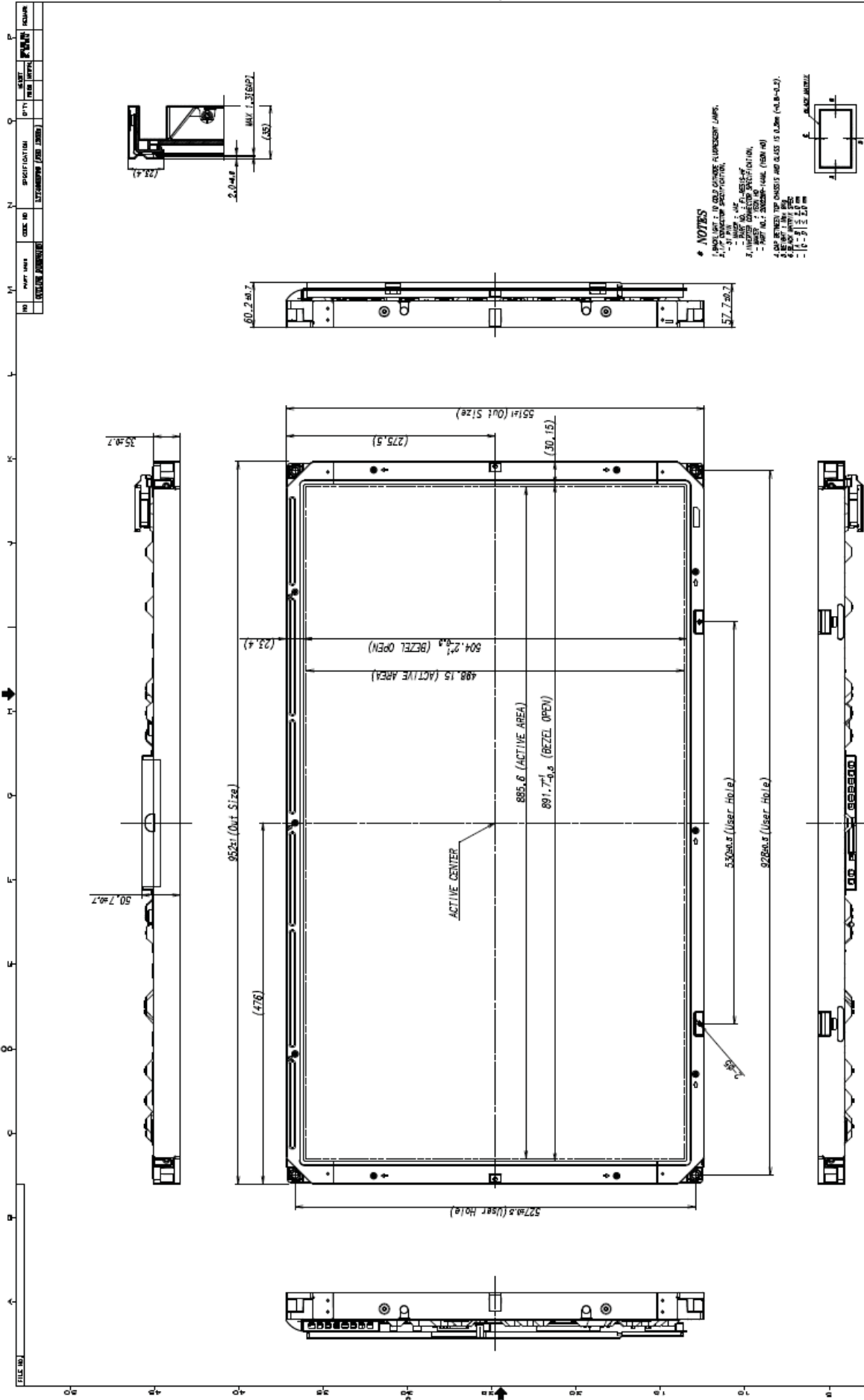


Unit (ms)

	Min	Max		Min	Max		Min	Max
T1	0.47	10	T6	0	230	T11	100	-
T2	0	100	T7	0	-	T12	45	-
T3	0	100	T8	0	-	T13	0	300
T4	20	25	T9	0	-	T14	1000	-
T5	35	75	T10	500	-			

- The supply voltage of the external system for the Module input should be the same as the definition of V_{DD} .
- Apply the lamp voltage within the LCD operation range. When the back light turns on before the LCD operation or the LCD turns off before the back light turns off, the display may momentarily show abnormal screen.
- In case of $V_{DD} = \text{off level}$, please keep the level of input signals low or keep a high impedance.
- T14 should be measured after the Module has been fully discharged between power off and on period.
- Interface signal should not be kept at high impedance when the power is on.

7. Outline dimension (Front view)



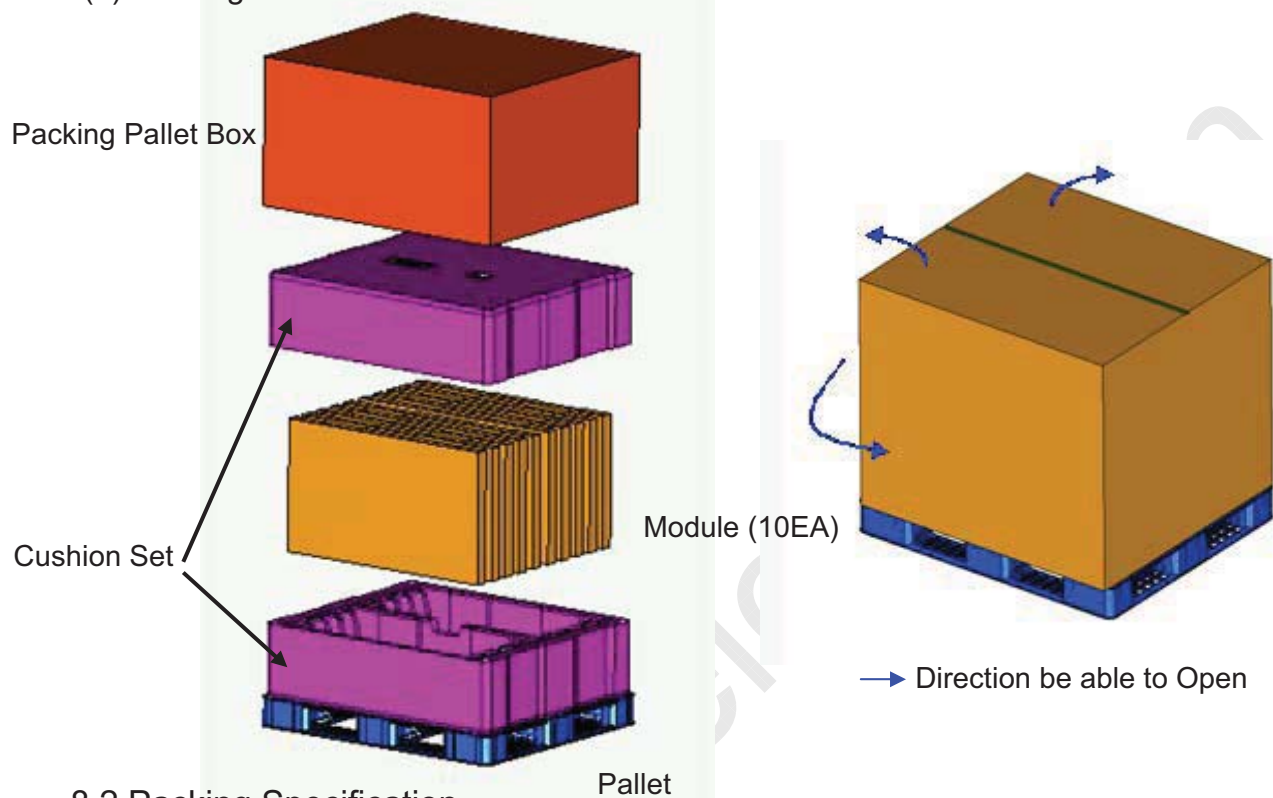
8. PACKING

8.1 CARTON (Internal Package)

(1) Packing Form

Corrugated fiberboard box and corrugated cardboard as shock absorber

(2) Packing Method



8.2 Packing Specification

Item	Specification	Remark
LCD Packing	10 ea / (Packing-Pallet Box)	1. 90Kg/LCD(10ea) 2. 7kg/Cushion Set(2ea) 3. 6.7kg/Packing-Pallet Box(1ea) 4. Cushion Material : EPS 5. Packing Pallet Box Material : DW4
Desiccant (Drier)	2ea/LCD	10g/ea, Cobalt-dichloride-free
Pallet	1 Box / Pallet	Pallet weight : 8kg
Packing Direction	Vertical	-
Total Pallet Size	H x V x height	1150mm x 985mm x 719mm
Total Pallet Weight	111.9kg	Pallet(8kg) + Module(10 x 9 = 90kg) + Cushion(7kg) + Pallet-BOX(6.7kg) + Desiccant(0.02kg x 10 = 0.2kg)

MODEL

LTA400HF06

Doc. No

05-000-G-100316

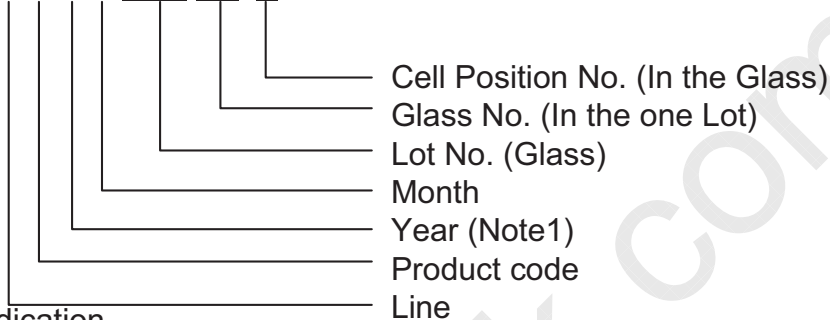
Page

24 / 28

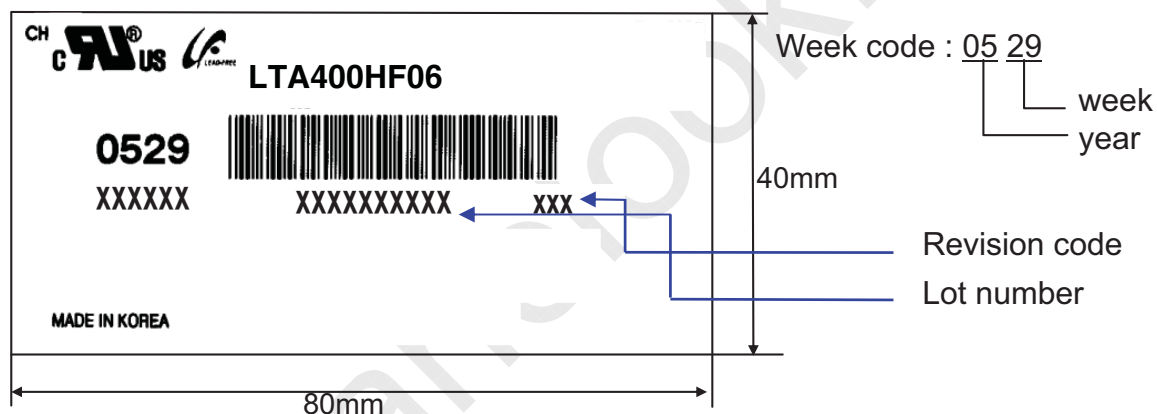
9. MARKING & OTHERS

A nameplate bearing followed by is affixed to a shipped product at the specified location on each product.

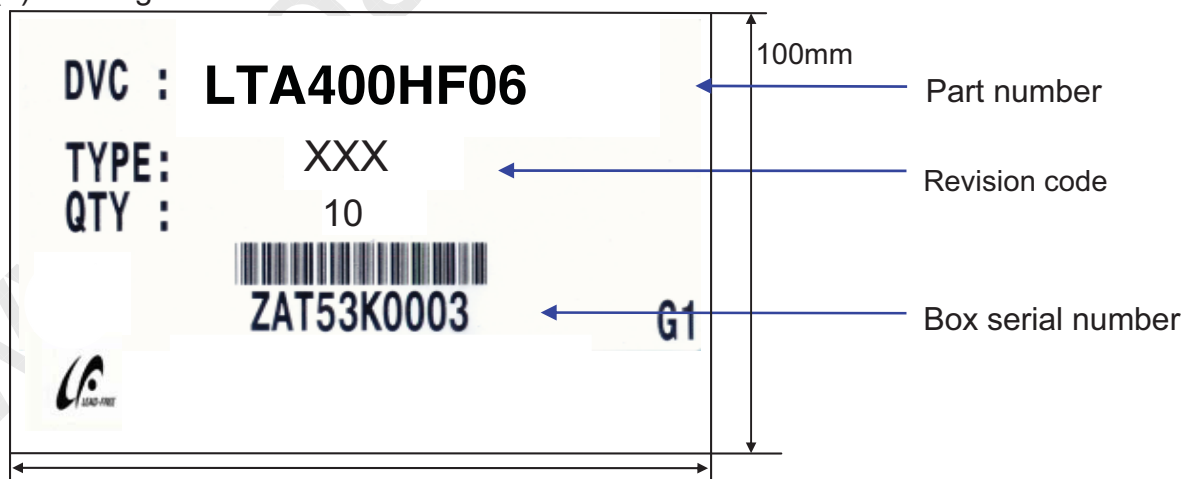
- (1) Parts number : LTA400HF06-XXX
- (2) Revision: One letters
- (3) Lot number : X X X X XXX XX X



(4) Nameplate Indication



(5) Packing box attach



(6) Others

- 1. After service part
 Lamps cannot be replaced because of the narrow bezel structure.

MODEL	LTA400HF06	Doc. No	05-000-G-100316	Page	25 / 28
-------	------------	---------	-----------------	------	---------

10. General Precautions

10.1 Handling

- (a) When the Module is assembled, it should be attached to the system firmly using all mounting holes. Be careful not to twist and bend the Module.
- (b) Because the inverter use high voltage, it should be disconnected from power before it is assembled or disassembled.
- (c) Refrain from strong mechanical shock and / or any force to the Module. In addition to damage, this may cause improper operation or damage to the Module and CCFT back light.
- (d) Note that polarizers are very fragile and could be damage easily. Do not press or scratch the surface harder than a HB pencil lead.
- (e) Wipe off water droplets or oil immediately. If you leave the droplets for a long time, staining or discoloration may occur.
- (f) If the surface of the polarizer is dirty, clean it using absorbent cotton or soft cloth.
- (g) Desirable cleaners are water, IPA(Isopropyl Alcohol) or Hexane. Do not use Ketone type materials(ex. Acetone), Ethyl alcohol, Toluene, Ethyl acid or Methyl chloride. It might permanent damage to the polarizer due to chemical reaction.
- (h) If the liquid crystal material leaks from the panel, it should be kept away from the eyes or mouth . In case of contact with hands, legs or clothes, it must be washed away with soap thoroughly.
- (i) Protect the Module from static, or the CMOS Gate Array IC would be damaged.
- (j) Use finger-stalls with soft gloves in order to keep display clean during the incoming inspection and assembly process.
- (k) Do not disassemble the Module.
- (l) Do not pull or fold the lamp wire.
- (m) Do not adjust the variable resistor located on the Module.
- (n) Protection film for polarizer on the Module should be slowly peeled off just before use so that the electrostatic charge can be minimized.
- (o) Pins of I/F connector should not be touched directly with bare hands.

MODEL	LTA400HF06	Doc. No	05-000-G-100316	Page	26 / 28
-------	------------	---------	-----------------	------	---------

10.2 Storage

- (a) Do not leave the Module in high temperature, and high humidity for a long time. It is highly recommended to store the Module with temperature from 0 to 35°C and relative humidity of less than 70%.
- (b) Do not store the TFT-LCD Module in direct sunlight.
- (c) The Module should be stored in a dark place. It is prohibited to apply sunlight or fluorescent light in storing.

10.3 Operation

- (a) No Connection or disconnect the Module in the "Power On" condition.
- (b) Power supply should always be turned on/off by the "Power on/off sequence"
- (c) Module has high frequency circuits. Sufficient suppression to the electromagnetic interference should be done by system manufacturers. Grounding and shielding methods may be important to minimize the interference.
- (d) The cable between the back light connector and its inverter power supply should be connected directly with a minimized length. A longer cable between the back light and the inverter may cause lower luminance of lamp(CCFT) and may require higher startup voltage(Vs).

10.4 Operation Condition Guide

- (a) The LCD product should be operated under normal conditions.
Normal condition is defined as below;
 - Temperature : $20 \pm 15^{\circ}\text{C}$
 - Humidity : $55 \pm 20\%$
 - Display pattern : continually changing pattern (Not stationary)
- (b) If the product will be used in extreme conditions such as high temperature, humidity, display patterns or operation time etc., It is strongly recommended to contact SEC for Application engineering advice. Otherwise, its reliability and function may not be guaranteed. Extreme conditions are commonly found at Airports, Transit Stations, Banks, Stock market, and Controlling systems.

MODEL	LTA400HF06	Doc. No	05-000-G-100316	Page	27 / 28
-------	------------	---------	-----------------	------	---------

10.5 Others

- (a) Ultra-violet ray filter is necessary for outdoor operation.
- (b) Avoid condensation of water. It may result in improper operation or disconnection of electrode.
- (c) Do not exceed the absolute maximum rating value. (supply voltage variation, input voltage variation, variation in part contents and environmental temperature, and so on)
Otherwise the Module may be damaged.
- (d) If the Module keeps displaying the same pattern for a long period of time, the image may be "sticked" to the screen.
To avoid image sticking, it is recommended to use a screen saver.
- (e) This Module has its circuitry PCB's on the rear side and should be handled carefully in order not to be stressed.
- (f) Please contact SEC in advance when you display the same pattern for a long time.

MODEL

LTA400HF06

Doc. No

05-000-G-100316

Page

28 / 28