

# LXT 954 - SERIES REACTION SOCKET EXTENSION TORQUE SENSORS

These torque sensors are designed to insert between a square-drive torque producing device and the work fixture it is attached to. This allows direct static and limited rotation torque measurements while the tool or device is placed under its typical load. A valuable torque measuring solution for testing drive socket systems, calibrating hand and click wrenches and checking applied torque values. Available in ten different torque capacities ranging from 25 in-lb to 7,000 ft-lb, all use a full, four-arm Wheatstone bridge circuit and have elastomer coating to protect the measurement element from mechanical damage. A six-foot 4-conductor shielded cable (terminated in a pigtail) allows the sensors to interface with a variety of test instruments by means of using different connector plugs (not supplied).

- **INSERTS WITHIN YOUR SQUARE-DRIVE SYSTEM**
- **CONVENIENTLY TESTS TORQUE IN STATIC AND LOADED STATES**
- **VERSATILE FOR MANY TESTING APPLICATIONS**
- **AVAILABLE IN TEN DIFFERENT CAPACITY RANGES**
- **SQUARE-DRIVE SIZES FROM 1/4" TO 1-1/2"**

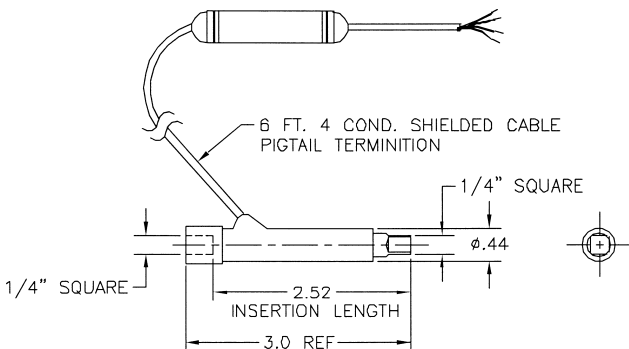
## SPECIFICATIONS

CAPACITY:	25 in-lb to 7,000 ft/lb depending on model
OVERLOAD CAPACITY:	150% of full scale
OUTPUT AT FULL SCALE:	1.00 to 3.00 mV/V depending on model
NONLINEARITY:	0.10% of full scale
HYSTERESIS:	0.10% of full scale
ZERO BALANCE:	1.00% of full scale
USEABLE TEMPERATURE:	-65 to 250° F
BRIDGE RESISTANCE:	1,000 ohm
MAX EXCITATION VOLTAGE:	20 Vdc



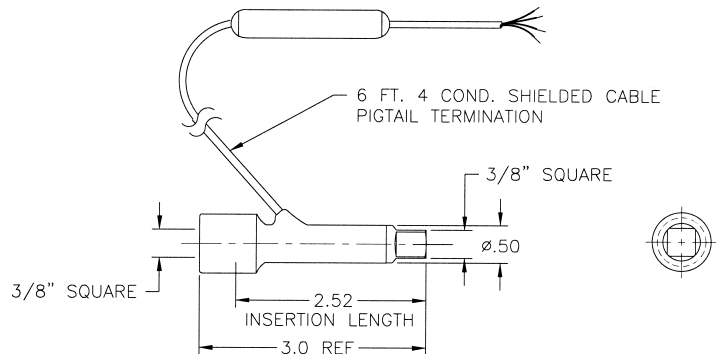
## AVAILABLE RANGES

Capacity		Nm	Drive (in)	A" (in)	B" (in)	C" (in)	Insertion Length (in.)	Output (mV/V)
in-lb	ft-lb							
25	2	3	1/4	3.0	1/2	.44	2.52	1.00
50	4	6	1/4	3.0	1/2	.44	2.52	2.00
125	10	14	1/4	3.0	1/2	.44	2.52	2.00
200	17	22	3/8	3.0	.70	.50		1.5
600	50	68	3/8	3.0	.70	.50		3.00
1,500	125	170	1/2	3.5	.97	.75	2.80	3.00
2,400	200	271	1/2	3.5	.97	.75	2.8	3.00
6,000	500	680	3/4	5.0	1.45	1.13	4.00	3.00
12,000	1,000	1,355	1	5.0	1.74	1.65	4.0	2.20
84,000	7,000	9,490	1-1/2	6.0	2.73	2.28	4.44	2.80



### CAPACITY

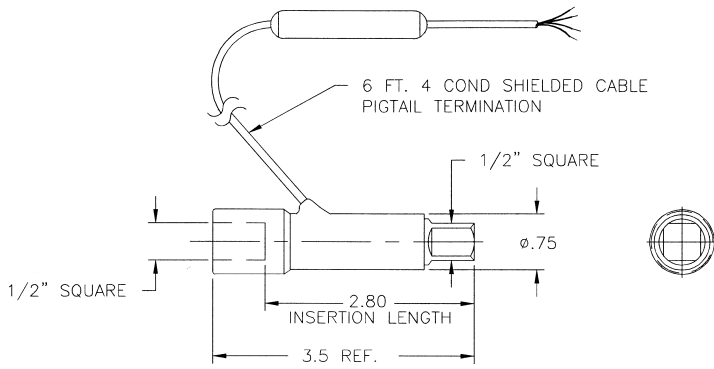
25, 50, 125 IN-LB (3, 6, 14 NM) — 1/4" SQUARE DRIVE



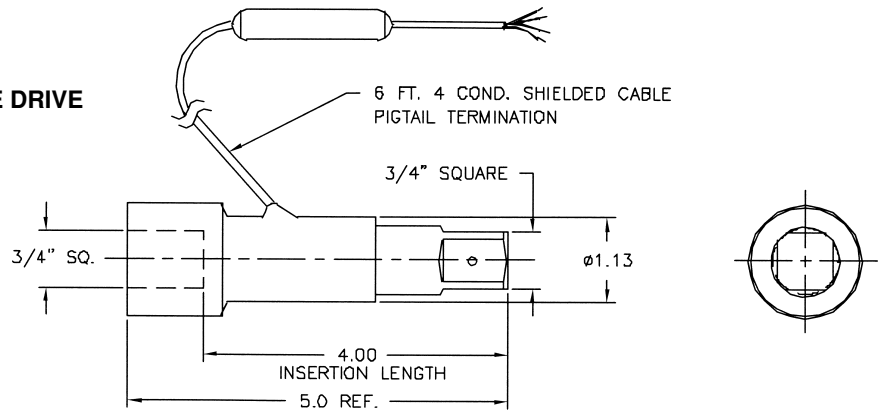
### CAPACITY

200, 600 IN-LB (22, 68 NM) — 3/8" SQUARE DRIVE

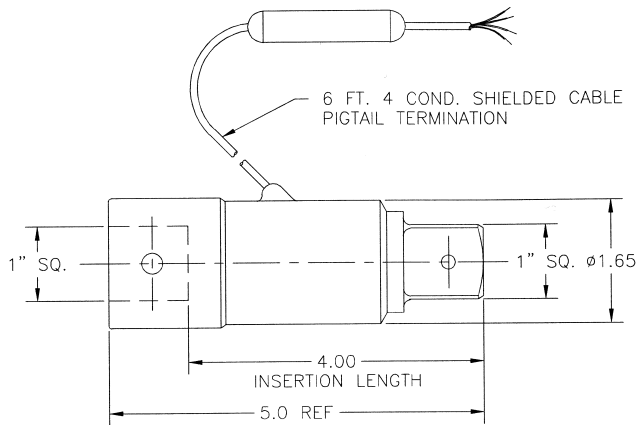
# LXT 954 - SERIES REACTION SOCKET EXTENSION TORQUE SENSORS



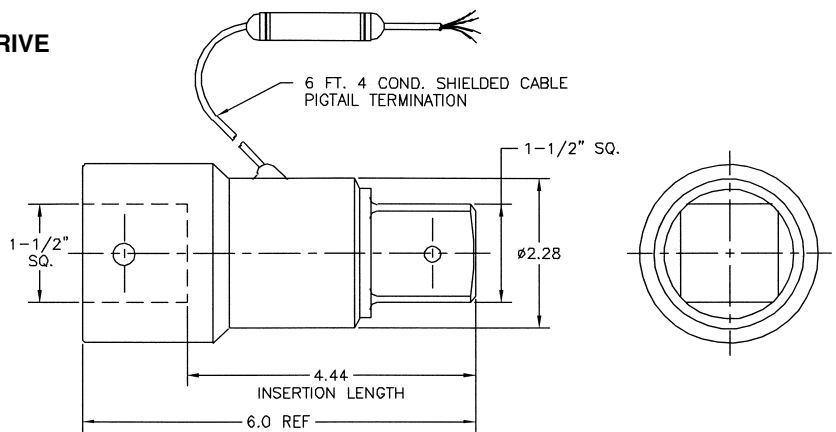
**CAPACITY**  
1500, 2400 IN-LB (170, 271 NM) — 1/2" SQUARE DRIVE



**CAPACITY**  
6000 IN-LB (680 NM) — 3/4" SQUARE DRIVE



**CAPACITY**  
12000 IN-LB (1355 NM) — 1" SQUARE DRIVE



**CAPACITY**  
84000 IN-LB (9490 NM) — 1-1/2" SQUARE DRIVE