



CHI-MEI

M150X3 TFT-LCD 15"

GENERAL DESCRIPTION

This product is a 15.0" TFT Liquid Crystal Display Module with 4 edge CCFL Backlight unit and 20 pins LVDS interface.
This module supports 1024x768 XGA mode and can display 266,144 colors.
The inverter module for backlight is not built-in.

液晶之友 电话: 020-33819057
http://www.lcdfriends.com

LVDS PINOUT DESCRIPTION

Pin	Symbol	Description	Pin	Symbol	Description
1	D	GROUND	31	GE1	Green even data 1
2	RO0	Red odd data 0	32	GE2	Green even data 2
3	RO1	Red odd data 1	33	GE3	Green even data 3
4	RO2	Red odd data 2	34	GE4	Green even data 4
5	RO3	Red odd data 3	35	GE5	Green even data 5
6	RO4	Red odd data 4	36	GND	Ground
7	RO5	Red odd data 5	37	BE0	Blue even data 0
8	GND	Ground	38	BE1	Blue even data 1
9	GO0	Green odd data 0	39	BE2	Blue even data 2
10	GO1	Green odd data 1	40	BE3	Blue even data 3
11	GO2	Green odd data 2	41	BE4	Blue even data 4
12	GO3	Green odd data 3	42	BE5	Blue even data 5
13	GO4	Green odd data 4	43	GND	Ground
14	GO5	Green odd data 5	44	PULL	Must be fixed to 0 V
15	GND	Ground	45	PULL	Must be fixed to 0 V
16	BO0	Blue odd data 0	46	ENAB	Data enable signal
17	BO1	Blue odd data 1	47	GND	Ground
18	BO2	Blue odd data 2	48	GND	Ground
19	BO3	Blue odd data 3	49	DCLK	Dot clock signal
20	BO4	Blue odd data 4	50	GND	Ground
21	BO5	Blue odd data 5	51	GND	Ground
22	GND	Ground	52	NC	Floating
23	RE0	Red even data 0	53	NC	Floating
24	RE1	Red even data 1	54	GND	Ground
25	RE2	Red even data 2	55	GND	Ground
26	RE3	Red even data 3	56	GND	Ground
27	RE4	Red even data 4	57	VDD	3,3 V power supply
28	RE5	Red even data 5	58	VDD	3,3 V power supply
29	GND	Ground	59	VDD	3,3 V power supply
30	GE0	Green even data 0	60	VDD	3,3 V power supply

GENERAL SPECIFICATIONS

Item	Specification	Unit
Screen Size	15,0" Diagonal	inch
Bezel Opening Area	308,2 (H) X 232,1 (V)	mm
Effective Display Area	304,1 (H) X 228,1 (V)	mm
Driver Element	A-si TFT active matrix	-
Pixel Number	1024 X R.G.B. X 768	pixel
Pixel Pitch	0,297 (H) X 0,297 (V)	mm
Pixel Arrangement	RGB vertical stripe	-
Display Colors	6 bits, 262,144	color
Transmissive Mode	Normaly White	-
Surface Treatment	Hard-coating (3H), antiglare Haze 12	-
Operating Temp	0-50	°C

ELECTRICAL SPECIFICATION

Parameter	Symbol	Value			Unit
		Min	Typ	Max	
MODULE					
Power Supply Voltage	Vcc	3,0	3,3	3,6	V
Power Supply Current	Icc	-	-	-	mA
Ripple Voltage	Vrp	-	TBD	-	mV
High Level	Vih	-	-	100	mV
Low Level	Vil	-100	-	-	mV
BACKLIGHT (4 CCFL)					
Lamp Input Voltage	VL	640	720	800	Vrms
Lamp Current	IL	2,0	5,5	6,5	mA Arms
Lamp Turn On Voltage	Vs	-	-	1150 25°C	Vrms
		-	-	1500 0°C	Vrms
Operating Frequency	FL	30	45	80	Khz
Lamp Life Time	LBL	50000	-	-	Hrs
Power Consumption	PL	-	9,4	-	W

MECHANICAL SPECIFICATIONS

Item		Min	Typ	Max	Unit
Module Size	Horizontal(H)	-	331,6	-	mm
	Vertical(V)	-	254,8	-	mm
	Depth(D)	-	13,0	-	mm
Weight		-	-	1350,0	g

OPTICAL CHARACTERISTICS

Parameter	Symbol	Min	Typ	Max	Units
Contrast Ratio	CR	250	300	-	-
Luminance of White Average	L ave	200	250	-	Cd/m2
White Variation	W	-	-	-	-
Response Time	Tr	-	15	30	ms
	Tf	-	35	50	ms
Viewing Angle					
x axis, right	x+	50	60	-	Deg.
x axis, left	x-	50	60	-	
y axis, up	y+	30	40	-	
y axis, down	y-	50	60	-	

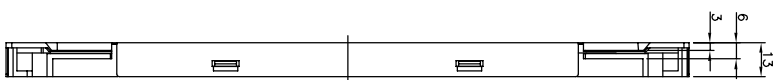
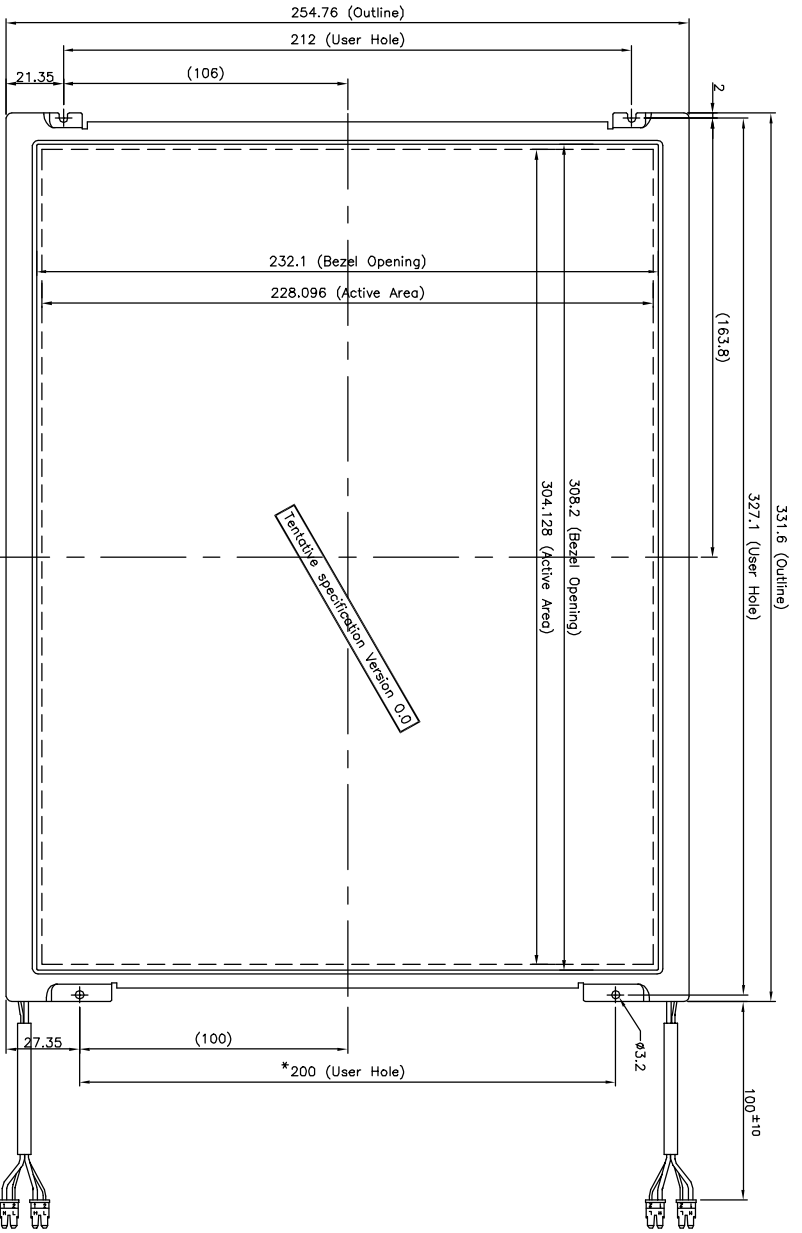
CONTROLLER KIT

- Controller board ACG 1024
ACL 1024 4166200-15
- LVDS board 4164702-00
- LVDS cable 4264719-00
- Inverter IV18124/T
- Inverter cable 4260529-00
- OSD control board 4161007-00
- OSD cable 4206802-60
- Video input board DVB-1000



Via Damiano Chiesa 22/24 20059 Vimercate -MI- Tel +39 039.666.718 Fax +39 039.691.8209

www.skylab.it Italian Customer: skylab@skylab.it International Customer: euro.skylab@skylab.it



NOTES:
1. GENERAL TOLERANCE: ±0.5

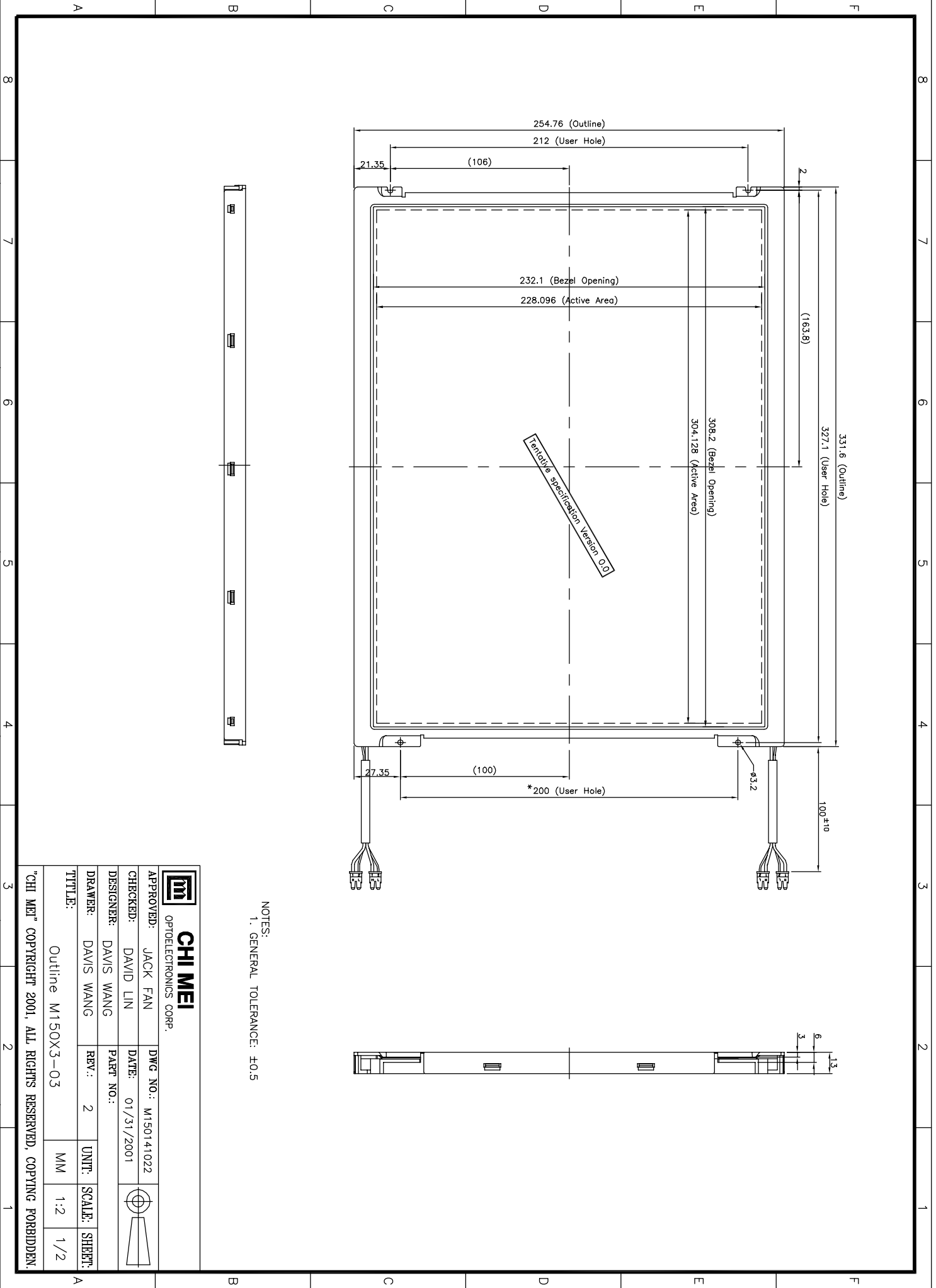


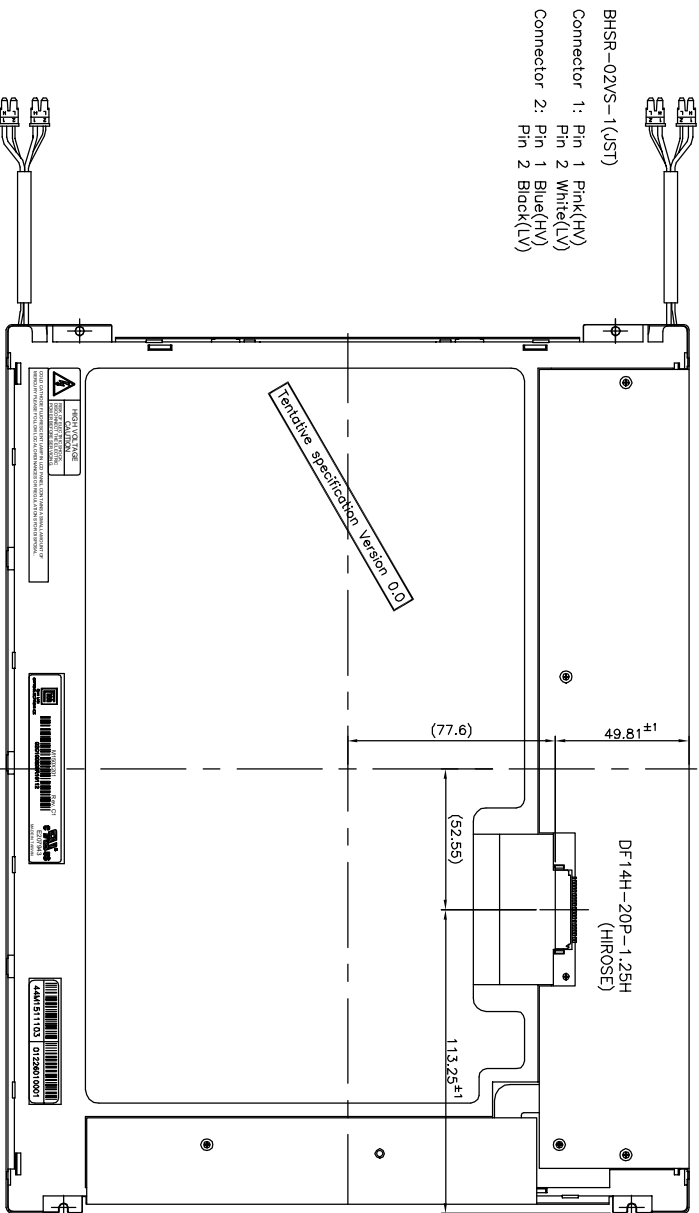
CHI MEI
OPTOELECTRONICS CORP.

APPROVED:	JACK FAN	DWG NO.:	M150141022
CHECKED:	DAVID LIN	DATE:	01/31/2001
DESIGNER:	DAVIS WANG	PART NO.:	
DRAWER:	DAVIS WANG	REV.:	2

TITLE:	Outline M150X3-03	UNIT:	MM	SCALE:	1:2	SHEET:	1/2
--------	-------------------	-------	----	--------	-----	--------	-----

"CHI MEI" COPYRIGHT 2001, ALL RIGHTS RESERVED, COPYING FORBIDDEN.





NOTES:
 1. GENERAL TOLERANCE: ±0.5



APPROVED:	JACK FAN	DWG NO.:	M150141022
CHECKED:	DAVID LIN	DATE:	01/31/2001
DESIGNER:	DAVIS WANG	PART NO.:	
DRAWER:	DAVIS WANG	REV.:	2

TITLE:	Outline M150X3-03	UNIT:	MM	SCALE:	1:2	SHEET:	2/2
--------	-------------------	-------	----	--------	-----	--------	-----

"CHI MEI" COPYRIGHT 2001, ALL RIGHTS RESERVED, COPYING FORBIDDEN.