

APPLICATION NOTE

VACUUM FLUORESCENT DISPLAY MODULE

CHARACTER DISPLAY MODULE

M162SD17BA

Futaba Vacuum Fluorescent Display Module M162SD17BA, with Futaba VFD 162-SD-17INK display, produces 16 digits×2 rows with 5×7 dot matrix.

Consisting of a VFD, DC-DC converter, the module can be operated by a synchronous serial interface, and only 5 voltage power source is required to operate the module.

CONTENTS

1. FEATURES	1
2. SPECIFICATIONS	
2-1. DIMENSIONS, WEIGHT	1
2-2. GENERAL SPECIFICATIONS	1
2-3. ENVIRONMENTAL SPECIFICATIONS	1
2-4. ABSOLUTE MAXIMUM SPECIFICATIONS	1
2-5. DC ELECTRICAL SPECIFICATIONS	2
3. FUNCTIONAL DESCRIPTION	
3-1. RESET FUNCTION	3
3-2. COMMAND FUNCTION	
3-2-1. DATA CONTROL RAM (DCRAM) DATA WRITE COMMAND	3
3-2-2. CGRAM DATA WRITE COMMAND	4~5
3-2-3. NUMBER OF DIGITS SET COMMAND	6
3-2-4. DIMMING SET COMMAND.....	7
3-2-5. GRAY-LEVEL SET COMMAND	8
3-2-6. GRAY-LEVEL ON/OFF SET COMMAND	9
3-2-7. DISPLAY LIGHT SET COMMAND	10
4. CONNECTION ASSIGNMENT	11
5. TIMING CHARACTERISTICS	
5-1. WRITING WAVEFORM	12
5-2. GRID SCAN TIMING	13
5-3. RESET CONTROL WAVE	14
6. OUTER DIMENSION	15
7. CIRCUIT BLOCK DIAGRAM	16
8. GRID ASSIGNMENT	17
9. CHARACTER FONT TABLES (<u>Cyrillic alphabets Font</u>)	18
10. WARRANTY	19
11. CAUTIONS FOR DETERMINING AND EXPORTING REGULATED GOODS OR SERVICES	19
12. OPERATING RECOMMENDATION	19
13. THE ENVIRONMENTAL SPECIFICATIONS FOR THIS PRODUCT	
13-1. WITH RESPECT TO EU ROHS DIRECTIVE	20
13-2. WITH RESPECT TO CHINESE ROHS DIRECTIVE	20

1. FEATURES

This vacuum fluorescent display (VFD) module consists of a 16 characters by 2 lines 5×7 dot matrix display, DC-DC converter, and controller/driver circuitry.

Setting eight bits in the function set instruction can vary the luminance level of the VFD.

Two hundred and forty eight character fonts consisting of alphabets, Cyrillic alphabets, numerals and other symbols can be displayed.

2. SPECIFICATIONS

2-1. DIMENSIONS, WEIGHT (Refer to FIGURE-1)

Table-1

Item	Specification	Unit
Outer Dimensions	(L) 137.0 ±1	mm
	(W) 27.5 ±1	
	(T) 15.3 Max.	
Weight	Approx. 40	g

2-2. GENERAL SPECIFICATIONS

Table-2

Item	Value	
Number of characters	16 characters × 2 lines	
Character configuration	5×7 dot matrix	
Display Area	86.7 × 12.0 mm	
Character Size	3.45 × 5.45 mm	
Character Pitch	5.55 × 6.55 mm	
Dot Size	0.57 × 0.65 mm	
Dot Pitch	0.72 × 0.80 mm	
Peak Wavelength of Illumination	Green ($\lambda_p=505\text{nm}$)	
Luminance	Minimum 250 cd/m ²	Typical 500 cd/m ²

2-3. ENVIRONMENTAL SPECIFICATIONS

Table-3

Item	Symbol	Min.	Max.	Unit	Comment
Operating Temperature	T_{opr}	-40	+85	°C	
Storage Temperature	T_{stg}	-40	+85	°C	
Operating Humidity	H_{opr}	20	85	%RH	Without condensation
Storage Humidity	H_{stg}	20	90	%RH	Without condensation
Vibration	–	–	4	G	Total amplitude: 1.5mm Freq: 10-55 Hz sine wave Sweep time: 1 min./cycle Duration: 2hrs./axis (X,Y,Z)
Shock	–	–	40	G	Duration: 11ms Wave form: half sine wave 3 times/axis (X,Y,Z,-X,-Y,-Z)

2-4. ABSOLUTE MAXIMUM SPECIFICATIONS

Table-4

Item	Symbol	Min.	Max.	Unit
Supply Voltage	V_{cc}	-0.3	6.5	V
Input signal Voltage	V_{IN}	-0.3	$V_{cc}+0.3$	V

2-5. DC ELECTRICAL SPECIFICATIONS

Table-5

Item	Symbol	Min.	Typ.	Max.	Unit
Supply Voltage	V_{cc}	4.5	5.0	5.5	V
Supply Current	I_{cc}	–	160	210	mA
Power Consumption	–	–	0.8	1.2	W
High - Level Input Voltage	V_{IH}	$0.8V_{cc}$	–	–	V
Low - Level Input Voltage	V_{IL}	–	–	$0.2V_{cc}$	V
High - Level Input Current	I_{IH}	–	–	5.0	μA
Low - Level Input Current	I_{IL}	–	–	-5.0	μA

3. FUNCTIONAL DESCRIPTION

The following are the list of commands.

Table-6 INSTRUCTIONS TABLE

INSTRUCTION	1st Byte								2nd Byte								
	B7	B6	B5	B4	B3	B2	B1	B0	B7	B6	B5	B4	B3	B2	B1	B0	
DCRAM_A DATA WRITE	0	0	0	X4	X3	X2	X1	X0	C7	C6	C5	C4	C3	C2	C1	C0	
DCRAM_B DATA WRITE	0	0	1	X4	X3	X2	X1	X0	C7	C6	C5	C4	C3	C2	C1	C0	
CGRAM DATA WRITE	0	1	0	*	*	Y2	Y1	Y0	*	D30	D25	D20	D15	D10	D5	D0	2nd Byte
									*	D31	D26	D21	D16	D11	D6	D1	3rd Byte
									*	D32	D27	D22	D17	D12	D7	D2	4th Byte
									*	D33	D28	D23	D18	D13	D8	D3	5th Byte
									*	D34	D29	D24	D19	D14	D9	D4	6th Byte
NUMBER OF DIGIT SET	1	1	1	0	0	0	*	*	0	*	*	*	F3	F2	F1	F0	
DIMMING SET	1	1	1	0	0	1	*	*	H7	H6	H5	H4	H3	H2	H1	H0	
GRAY-LEVEL SET	1	0	1	*	*	J2	J1	J0	I7	I6	I5	I4	I3	I2	I1	I0	
GRAY-LEVEL ON/OFF SET	1	1	0	X4	X3	X2	X1	X0	*	*	0	0	0	0	K1	K0	
DISPLAY LIGHT SET	1	1	1	0	1	0	LS	HS	*	*	*	*	*	*	*	*	

- *: Not Relevant
- Xn: Duty Timing (Digit) Address Set, n = 0 to 4
- Cn: CGRAM/CGROM Character Code Bit, n = 0 to 7
- Yn: CGRAM Address Bit, n = 0 to 2
- Dn: CGRAM Character Code Setting, n = 0 to 34
- Fn: Number of Digits Set, n = 0 to 3
- Hn: Dimming Quantity Setting, n = 0 to 7
- Jn: Gray-Level Register Setting, n = 0 to 2
- In: Gray-Level Quantity Setting, n = 0 to 7
- Kn: Each Gray-Level Enable/Disable Setting, n = 0 to 1
- HS: "1": All Output (Anode, Segment) Data = "H" "0": Normal Mode
- LS: "1": All Output (Anode, Segment) Data = "L" "0": Normal Mode

When data is written into the RAM (DCRAM,CGRAM or ADRAM) in a continuous manner, the addresses are automatically incremented internally. It is therefore not necessary to specify the first byte.

3-1. RESET FUNCTION

When initialized, the internal status after power supply has been reset as follows.

Table-7 RESET FUNCTION

Instruction	At Reset Condition
DCRAM_A	DCRAM_A Address=00H ALL DCRAM_A Data=20H
DCRAM_B	DCRAM_B Address=00H ALL DCRAM_B Data=20H
CGRAM	CGRAM Address=00H ALL CGRAM Data=00H
Number of Digit Set	F3 ~ F0="1111" F6 ~ F4="000"
Dimming Set	0/255
Gray Level Set	J2 ~ J0="000" 0/255
Gray Level On / Off Set	GLRAM Address=00H K5 ~ K0="000000"(Gray Level Disable)
Display Light Set	LS="1" HS="0" (Display all off)

3-2. COMMAND FUNCTION

3-2-1. DATA CONTROL RAM (DCRAM) DATA WRITE COMMAND

The DCRAM (Include: DCRAM_A and DCRAM_B) Data Write Command is used to specify the address of the DCRAM and writes the character code of the CGROM and CGRAM (C0 to C7 bits). The DCRAM consists of 5 address bits which are used to store the CGRAM & CGROM character codes. The character codes specified by the DCRAM are converted to a 5 x 7 dot matrix character pattern via the CGROM and CGRAM. The DCRAM (Include: DCRAM_A, DCRAM_B) can each store up to 24 characters (DCRAM_A = 24 characters, DCRAM_B = 24 characters). The DCRAM Data Write Command Format is shown below.

		MSB				LSB				
1st Byte	(1st)	B7	B6	B5	B4	B3	B2	B1	B0	
		0	0	0	X4	X3	X2	X1	X0	DCRAM_A Data Write Mode is selected and the DCRAM_A Address is specified. (i.e. DCRAM_A Address = 0H)

or

		MSB				LSB				
1st Byte	(1st)	B7	B6	B5	B4	B3	B2	B1	B0	
		0	0	1	X4	X3	X2	X1	X0	DCRAM_B Data Write Mode is selected and the DCRAM_B Address is specified. (i.e. DCRAM_B Address = 0H)

		MSB				LSB				
2nd Byte	(2nd)	B7	B6	B5	B4	B3	B2	B1	B0	
		C7	C6	C5	C4	C3	C2	C1	C0	CGROM & CGRAM Character Codes are specified. (They are written into the DCRAM Address 0H)

3-2-2. CGRAM DATA WRITE COMMAND

The Character Generator RAM (CGRAM) Data Write Command is used to specify the CGRAM address (00H to 07H) and write the character pattern data. It consists of 3 address bits which is used to store the 5 x 7 dot matrix character patterns. The CGRAM can store up to 8 types of character patterns which may be displayed by specifying the Character Code (DCRAM Address). The CGRAM Data Write Command Format is given below.

1st Byte (1st)	MSB				LSB				CGRAM Data Write Mode is selected and the CGRAM Address is specified (i.e. CGRAM Address = 00H).
	B7	B6	B5	B4	B3	B2	B1	B0	
	0	1	0	*	*	Y2	Y1	Y0	
2nd Byte (2nd)	MSB				LSB				1st Column Data is specified and rewritten into the CGRAM Address 00H.
	B7	B6	B5	B4	B3	B2	B1	B0	
	*	D30	D25	D20	D15	D10	D5	D0	
3rd Byte (3rd)	MSB				LSB				2nd Column Data is specified and rewritten into the CGRAM Address 00H.
	B7	B6	B5	B4	B3	B2	B1	B0	
	*	D31	D26	D21	D16	D11	D6	D1	
4th Byte (4th)	MSB				LSB				3rd Column Data is specified and rewritten into the CGRAM Address 00H.
	B7	B6	B5	B4	B3	B2	B1	B0	
	*	D32	D27	D22	D17	D12	D7	D2	
5th Byte (5th)	MSB				LSB				4th Column Data is specified and rewritten into the CGRAM Address 00H.
	B7	B6	B5	B4	B3	B2	B1	B0	
	*	D33	D28	D23	D18	D13	D8	D3	
6th Byte (6th)	MSB				LSB				5th Column Data is specified and rewritten into the CGRAM Address 00H.
	B7	B6	B5	B4	B3	B2	B1	B0	
	*	D34	D29	D24	D19	D14	D9	D4	

During a continuous data write operation from one CGRAM Address to the next, it is not necessary to specify the CGRAM address since they are automatically incremented; however, the character pattern data must be specified. The 2nd to the 6th character pattern data byte are considered as one data item, **therefore 1µs is sufficient value for parameter tDOFF between bytes**. Please refer to the information below.

2nd Byte (7th)	MSB				LSB				1st Column Data is specified and rewritten into the CGRAM Address 01H.
	B7	B6	B5	B4	B3	B2	B1	B0	
	*	D30	D25	D20	D15	D10	D5	D0	
6th Byte (11th)	MSB				LSB				5th Column Data is specified and rewritten into the CGRAM Address 01H.
	B7	B6	B5	B4	B3	B2	B1	B0	
	*	D34	D29	D24	D19	D14	D9	D4	

where: Y2 (MSB) to Y0 (LSB): CGRAM Address Bits (8 Characters)
D34 (MSB) to D0 (LSB): Character Pattern Data Bits (35 outputs)

Please refer below for the CGROM Address and CGRAM Address Setting relationship.

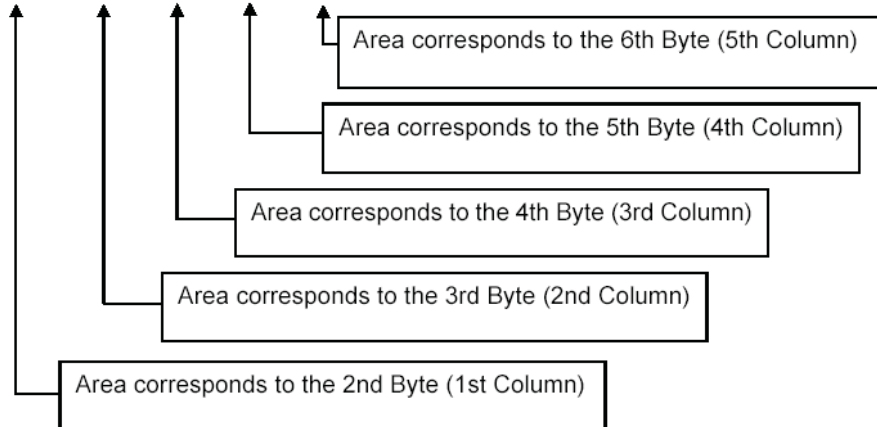
Table-8

Y2	Y1	Y0	CGROM Address
0	0	0	RAM00(01000000B)
0	0	1	RAM01(01000001B)
0	1	0	RAM02(01000010B)
0	1	1	RAM03(01000011B)
1	0	0	RAM04(01000100B)
1	0	1	RAM05(01000101B)
1	1	0	RAM06(01000110B)
1	1	1	RAM07(01000111B)

The CGROM and CGRAM output area placement is given in the table below.

Table-9

D0	D1	D2	D3	D4
D5	D6	D7	D8	D9
D10	D11	D12	D13	D14
D15	D16	D17	D18	D19
D20	D21	D22	D23	D24
D25	D26	D27	D28	D29
D30	D31	D32	D33	D34



The Character Generator ROM (CGROM) consists of 8 CGROM Address bits generating 5 x 7 dot matrix character patterns. It can store up to a maximum of 248 types of character patterns.

3-2-3. NUMBER OF DIGITS SET COMMAND

		MSB				LSB			
1st Byte (1st)		B7	B6	B5	B4	B3	B2	B1	B0
		0	1	1	X4	X3	X2	X1	X0

		MSB				LSB				The Number of Digits Set Mode is selected and the number of digit value is specified, Universal Function set to ON/OFF.
2nd Byte		B7	B6	B5	B4	B3	B2	B1	B0	
		0	*	*	*	F3	F2	F1	F0	

where: F3 (MSB) to F0 (LSB): Display Duty Data Bits (16 stages)

Table-10

F1	F2	F1	F0	Digits
0	0	0	0	T1(1G)
0	0	0	1	T1(1G)~T2(2G)
0	0	1	0	T1(1G)~T3(3G)
0	0	1	1	T1(1G)~T4(4G)
0	1	0	0	T1(1G)~T5(5G)
0	1	0	1	T1(1G)~T6(6G)
0	1	1	0	T1(1G)~T7(7G)
0	1	1	1	T1(1G)~T8(8G)
1	0	0	0	T1(1G)~T9(9G)
1	0	0	1	T1(1G)~T10(10G)
1	0	1	0	T1(1G)~T11(11G)
1	0	1	1	T1(1G)~T12(12G)
1	1	0	0	T1(1G)~T13(13G)
1	1	0	1	T1(1G)~T14(14G)
1	1	1	0	T1(1G)~T15(15G)
1	1	1	1	T1(1G)~T16(16G)

3-2-4. DIMMING SET COMMAND

The Dimming Set Command is used to write the display duty value to the duty cycle register. Using a 8-bit data, the display duty adjusts the contrast in 240 stages. When the power is turned ON or when the /RESET signal is inputted, the duty cycle register value is set to "0". It's advisable to always execute this command before turning on the display, after which the desired duty value may be set. The command format is given below.

2nd Byte	MSB				LSB				Display Duty Set Mode is selected and the duty value is specified.
	B7	B6	B5	B4	B3	B2	B1	B0	
	H7	H6	H5	H4	H3	H2	H1	H0	

The relationship between the Setup Data, Controlled Grid Duty and the Synchronous Signal Quantity are given in the table below.

Table-11

H7	H6	H5	H4	H3	H2	H1	H0	Dimming Quantity (Grid pin)
0	0	0	0	0	0	0	0	0/255 x T
0	0	0	0	0	0	0	1	1/255 x T
0	0	0	0	0	0	1	0	2/255 x T
0	0	0	0	0	0	1	1	3/255 x T
0	0	0	0	0	1	0	0	4/255 x T
:	:	:	:	:	:	:	:	:
:	:	:	:	:	:	:	:	:
1	1	1	0	1	1	1	1	239/255 x T
1	1	1	1	0	0	0	0	240/255 x T
1	1	1	1	0	0	0	1	240/255 x T
:	:	:	:	:	:	:	:	:
:	:	:	:	:	:	:	:	:
1	1	1	1	1	1	1	0	240/255 x T
1	1	1	1	1	1	1	1	240/255 x T

*default

3-2-5. GRAY-LEVEL SET COMMAND

The Gray-Level Set Command is used to write the register setting value and gray level duty value to the register. Using a 3-bit data 1st byte and 8-bit data 2nd byte, the set register adjusts the contrast in

240 stages. When the power is turned ON or when the /RESET signal is inputted, both the register are set to "0". At this time, it is necessary to set data. (Excluding "0")

The data sets the "1" (enable state) or "0" (disable state). The command format is given below.

	MSB						LSB	
1st Byte	B7	B6	B5	B4	B3	B2	B1	B0
	1	0	1	*	*	J2	J1	J0

Table-12

J2	J1	J0	Register Setting
0	0	0	Anode(D0A~D34A)
0	0	1	Anode(D0B~D34B)
0	1	0	Don't Care
0	1	1	Don't Care
1	0	0	Don't Care
1	0	1	Don't Care
1	1	0	Don't Care
1	1	1	Don't Care

	MSB							LSB
2nd Byte	B7	B6	B5	B4	B3	B2	B1	B0
	I7	I6	I5	I4	I3	I2	I1	I0

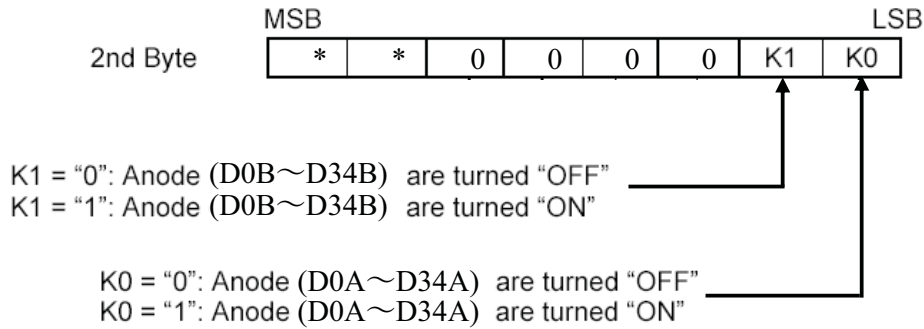
Table-13

I7	I6	I5	I4	I3	I2	I1	I0	Dimming Data
0	0	0	0	0	0	0	0	
0	0	0	0	0	0	0	1	1/255
0	0	0	0	0	0	1	0	2/255
0	0	0	0	0	0	1	1	3/255
:	:	:	:	:	:	:	:	:
:	:	:	:	:	:	:	:	:
1	1	1	0	1	1	1	1	239/255
1	1	1	1	0	0	0	0	240/255
1	1	1	1	0	0	0	1	240/255...
:	:	:	:	:	:	:	:	:
:	:	:	:	:	:	:	:	:
1	1	1	1	1	1	1	1	240/255

*default (Please set it excluding "0".)

3-2-6. GRAY-LEVEL ON/OFF SET COMMAND

The Gray-Level ON/OFF Set consists of 2 address bits used to store the symbol data. The symbol data specified by the GLRAM is directly outputted. The command format is given below.



Please refer to the table below for Anode/Segment (K0~K2) position and GLRAM (X0~X4) Duty Timing (Digit) Address setting relationship.

Table-14

Duty Timing (Digit) Address	Anode (D0A~D34A)	Anode (D0B~D34B)
T1 (11000000B)	ON/OFF	ON/OFF
T2 (11000001B)	ON/OFF	ON/OFF
T3 (11000010B)	ON/OFF	ON/OFF
T4 (11000011B)	ON/OFF	ON/OFF
T5 (11000100B)	ON/OFF	ON/OFF
T6 (11000101B)	ON/OFF	ON/OFF
T7 (11000110B)	ON/OFF	ON/OFF
T8 (11000111B)	ON/OFF	ON/OFF
T9 (11001000B)	ON/OFF	ON/OFF
T10 (11001001B)	ON/OFF	ON/OFF
T11 (11001010B)	ON/OFF	ON/OFF
T12 (11001011B)	ON/OFF	ON/OFF
T13 (11001100B)	ON/OFF	ON/OFF
T14 (11001101B)	ON/OFF	ON/OFF
T15 (11001110B)	ON/OFF	ON/OFF
T16 (11001111B)	ON/OFF	ON/OFF

3-2-7. DISPLAY LIGHT SET COMMAND

The Display Light Set Command is used to turn all display lights ON or OFF. All Display Lights On Mode is primarily used for testing the display. The All Display Light OFF Mode is used for the blinking display and to prevent any malfunction when the power is turned on. The command format is given below.

	MSB						LSB	
1st Byte	B7	B6	B5	B4	B3	B2	B1	B0
	1	1	1	0	1	0	LS	HS

where: HS: All Display Lights are turned ON
 LS: All Display Lights are turned OFF

The table below shows Segment and Anode Display Status in relation to the Display Light Set Command data.

Table-15

Bit Name	Segment and Anode Display Status
HS	"0": Normal Display Mode "1": All outputs (Anode, Segment) = "High" The duty of Grid will be follow Dimming Setting. The duty of Anode/Segment will be follow Gray-Level Setting.
LS	"0": Normal Display Mode "1": All outputs (Anode, Segment) = "Low"

4. CONNECTOR PIN ASSIGNMENT

Table-16

Pin No.	Description
1	Vcc(5V)
2	\overline{CS}
3	CP
4	DA
5	\overline{RESET}
6	GND

Connector Pin Specifications

Table-17

Function	Symbol	Input/Output	Description
Shift Clock Input	CP	Input	Serial data is shifted on the rising edge of CP
Serial Data Input	DA	Input	Input from LSB.
Chip Select Input	\overline{CS}	Input	Serial data transfer is disabled when CS pin is "H" level.
Reset Input	\overline{RESET}	Input	"Low" initializes all the functions. For an initial status, see Reset Function
GND Pin	GND	Input	GND

5. TIMING CHARACTERISTICS
 5-1. WRITING WAVEFORM

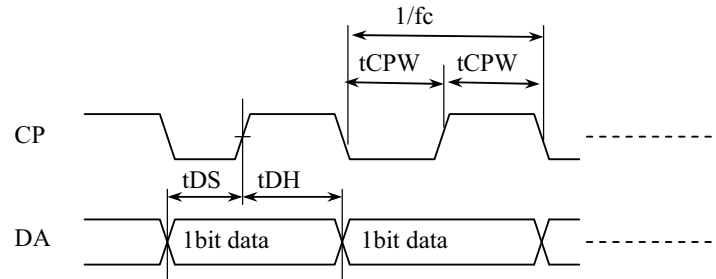


Table-18

Parameter	Symbol	Min	Typ	Max	Unit
CP Frequency	f_c	-	-	0.5	MHz
CP Pulse Width	t_{CPW}	700	-	-	ns
CP Hold Time	t_{CS-CP}	1000	-	-	ns
CS Hold Time	t_{CP-CS}	1000	-	-	ns
CS Pulse Width	t_{CSW}	1000	-	-	ns
Data Processing Time	t_{DOFF}	2000	-	-	ns
Data Setup Time	t_{DS}	300	-	-	ns
Data Hold Time	t_{DH}	300	-	-	ns

Table-19

Grid Scan Timing	DCRAM Address		ON/OFF timing of Grid																Selection of code		
	Gray-Level	ON/OFF Set Address	1G	2G	3G	4G	5G	6G	7G	8G	9G	10G	11G	12G	13G	14G	15G	16G	DCRAM/A	DCRAM/B	
T1		00H	H	L	L	L	L	L	L	L	L	L	L	L	L	L	L	L	L	Note	Note
T2		01H	L	H	L	L	L	L	L	L	L	L	L	L	L	L	L	L	L	Note	Note
T3		02H	L	L	H	L	L	L	L	L	L	L	L	L	L	L	L	L	L	Note	Note
T4		03H	L	L	L	H	L	L	L	L	L	L	L	L	L	L	L	L	L	Note	Note
T5		04H	L	L	L	L	H	L	L	L	L	L	L	L	L	L	L	L	L	Note	Note
T6		05H	L	L	L	L	L	H	L	L	L	L	L	L	L	L	L	L	L	Note	Note
T7		06H	L	L	L	L	L	L	H	L	L	L	L	L	L	L	L	L	L	Note	Note
T8		07H	L	L	L	L	L	L	L	H	L	L	L	L	L	L	L	L	L	Note	Note
T9		08H	L	L	L	L	L	L	L	L	H	L	L	L	L	L	L	L	L	Note	Note
T10		09H	L	L	L	L	L	L	L	L	L	H	L	L	L	L	L	L	L	Note	Note
T11		0AH	L	L	L	L	L	L	L	L	L	L	H	L	L	L	L	L	L	Note	Note
T12		0BH	L	L	L	L	L	L	L	L	L	L	L	H	L	L	L	L	L	Note	Note
T13		0CH	L	L	L	L	L	L	L	L	L	L	L	L	H	L	L	L	L	Note	Note
T14		0DH	L	L	L	L	L	L	L	L	L	L	L	L	L	H	L	L	L	Note	Note
T15		0EH	L	L	L	L	L	L	L	L	L	L	L	L	L	L	H	L	L	Note	Note
T16		0FH	L	L	L	L	L	L	L	L	L	L	L	L	L	L	L	H	L	Note	Note
T17		10H	L	L	L	L	L	L	L	L	L	L	L	L	L	L	L	L	H	Note	Note
T18		11H																			
T19		12H																			
T20		13H																			
T21		14H																			
T22		15H																			
T23		16H																			
T24		17H																			

don't use

Note) Please specify an arbitrary code from the CGROM code.

5-3. RESET CONTROL WAVE

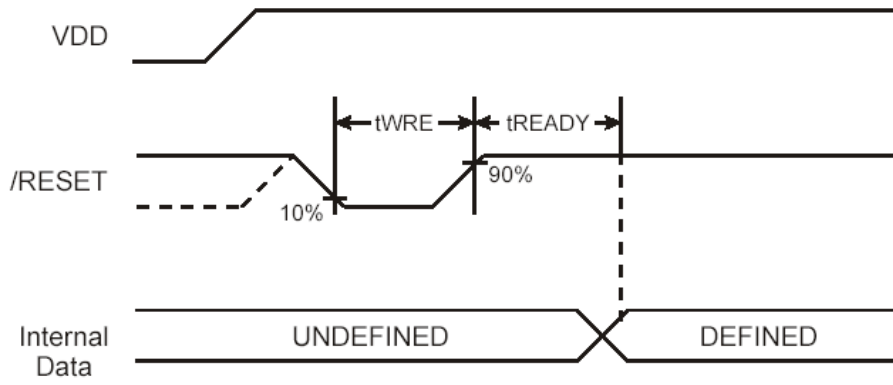
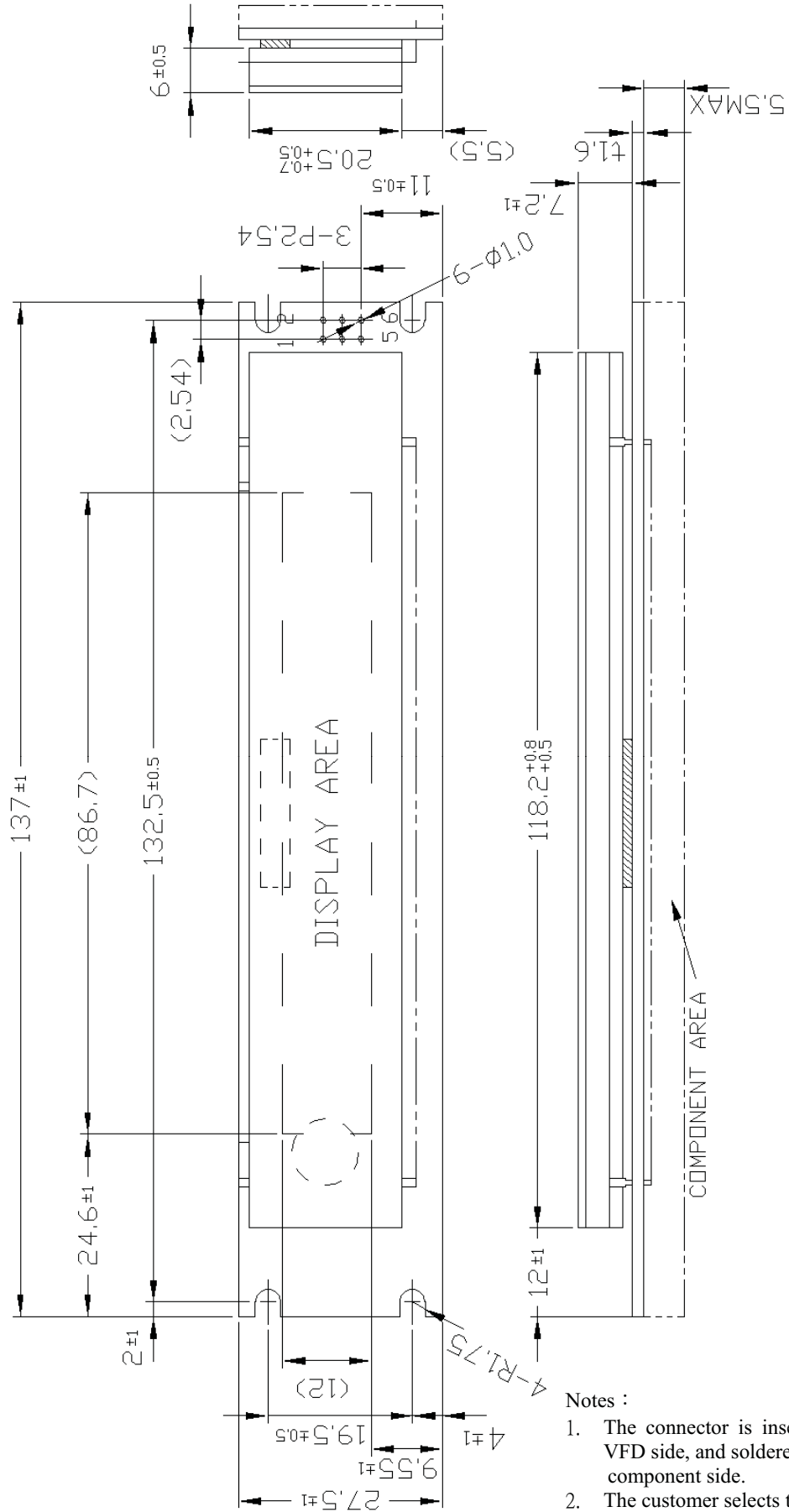


Table-20

Item	Symbol	Min	Typ	Max	Unit
Reset Pulse Width	t_{WRE}	2	-	-	μs
Ready Time after Reset	t_{READY}	3	-	-	ms

6. OUTER DIMENSION

FIGURE-1



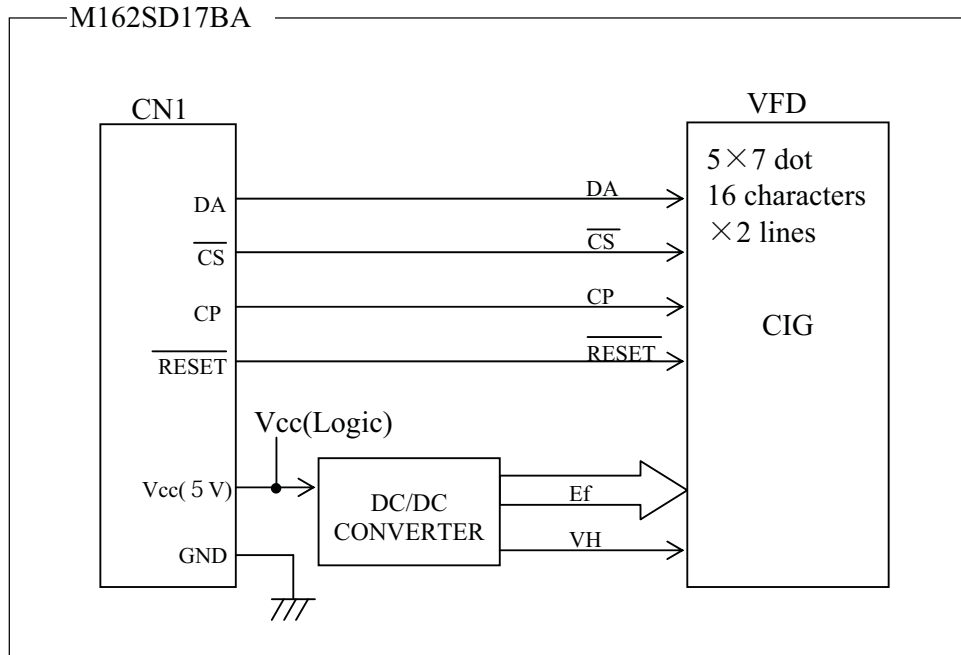


Table-21

MSB \ LSB	0000	0001	0010	0011	0100	0101	0110	0111	1000	1001	1010	1011	1100	1101	1110	1111
0000	RAM0			0	1	2	3	4	5	6	7	8	9	0	1	2
0001	RAM1	!	!	1	А	а	А	а	!	”	Ё	ё	С	с	С	с
0010	RAM2	”	”	2	В	в	В	в	”	Ъ	ъ	Т	т	Т	т	
0011	RAM3	#	#	3	С	с	С	с	*	„	Г	г	У	у	У	у
0100	RAM4	\$	\$	4	Д	д	Д	д	+	Е	е	Ф	ф	Ф	ф	
0101	RAM5	%	%	5	Е	е	У	у	@	±	5	Е	Х	х	Х	х
0110	RAM6	&	&	6	Ф	ф	У	у	°	•	І	і	Ц	ц	Ц	ц
0111	RAM7	'	'	7	Г	г	W	w	±	„	І	3	4	а	ч	і
1000		▲	■	С	В	Х	х	Х	μ	*	Ј	И	Ш	ш	Ш	ш
1001		▼	■)	9	І	У	і	у	π	<	Ь	Ш	Ш	Ш	Ь
1010		◆	■	*	:	Ј	З	ј	з	.	>	Ь	К	Ь	К	Ь
1011		▶	■	+	;	К	К	к	с	*	е	Ъ	О	Ы	Л	Ы
1100		◊	■	,	<	Л	\	І	І	-	™	К	М	Ь	М	Ь
1101		✱	■	—	=	М	□	м	?	—	Г	—	Н	Э	Н	Э
1110		■	■	„	„	Н	^	н	~	„	І	Ѓ	О	И	О	Ѓ
1111		■	◆	/	?	О	□	о	■	'	„	У	П	Я	П	Я