



# InfoVision Optoelectronics (Kunshan)Co., Ltd.

Document Title	M236MWF2 R0 Customer Approved Specification			Page No.	1/26
Document No.	A-M236MWF2-R0-153-02	Issue date	2012/09/27	Revision	00

## Customer Approved Specification

**To: F-LINK ELECTRONIC CO.,LTD**

**Product Name: M236MWF2 R0**

**Document Issue Date: 2012/09/27**

Customer	InfoVision Optoelectronics
<u>SIGNATURE</u>	<u>SIGNATURE</u>
_____	REVIEWED BY QA
_____	_____
_____	PREPARED BY FAE
_____	_____
Please return 1 copy for your confirmation with your signature and comments.	

- Note: 1. Please contact InfoVision Company. before designing your product based on this product.  
 2. The information contained herein is presented merely to indicate the characteristics and performance of our products. No responsibility is assumed by IVO for any intellectual property claims or other problems that may result from application based on the module described herein.

FQ-7-30-0-009-03D

Revision	Date	Page	Old Description	New Description	Remark
----------	------	------	-----------------	-----------------	--------





Document Title	M236MWF2 R0 Customer Approved Specification			Page No.	3/26
Document No.	A-M236MWF2-R0-153-02	Issue date	2012/09/27	Revision	00

### **Contents**

<b>1. GENERAL DESCRIPTIONS</b>	<b>3</b>
<b>2. ABSOLUTE MAXIMUM RATINGS</b>	<b>6</b>
<b>3. ELECTRICAL SPECIFICATION</b>	<b>7</b>
<b>4. OPTICAL CHARACTERISTICS</b>	<b>15</b>
<b>5. MECHANICAL CHARACTERISTICS</b>	<b>18</b>
<b>6. PACKAGE SPECIFICATION</b>	<b>21</b>
<b>7. LOT MARK</b>	<b>22</b>
<b>8. GENERAL PRECAUTION</b>	<b>23</b>

IVO Confidential document



Document Title	M236MWF2 R0 Customer Approved Specification			Page No.	4/26
Document No.	A-M236MWF2-R0-153-02	Issue date	2012/09/27	Revision	00

## 1 General Descriptions

### 1.1 Introduction

The M236MWF2 is a Color Active Matrix Thin Film Transistor (TFT) Liquid Crystal Display (LCD) module, which uses amorphous Silicon TFT as a switching device. It is composed of a TFT LCD panel, a timing controller, voltage reference, common voltage, column driver, and row driver circuit. This TFT LCD has a 23.6 inch (diagonally measured) active display area with resolution (1,920 vertical by 1,080 horizontal pixel array).

### 1.2 Features

- 23.6" TFT LCD Panel
- LED Backlight System
- Supports (V:1,920 lines, H:1,080 pixels) Resolution
- Compatible with RoHS and GP Standard
- Compatible with TCO 5.0 Standard

### 1.3 Product Summary

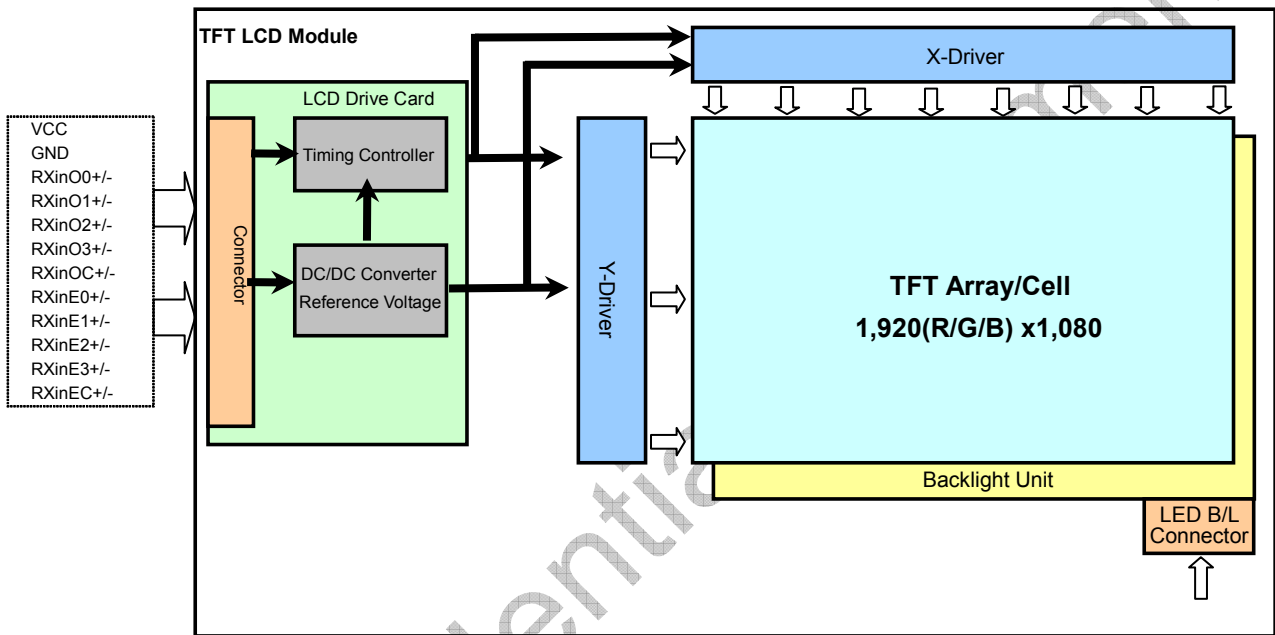
Items	Specifications	Unit	Remark
Screen Diagonal	23.6	inch	-
Active Area	521.3x293.2	mm	-
Pixels(H x V)	1,920(x3) x1,080	-	-
Pixel Pitch	0.2715x0.2715	mm	-
Pixel Arrangement	R.G.B. Vertical Stripe	-	-
Display Mode	TN Mode, Normally White	-	-
White Luminance	300	cd/ m <sup>2</sup>	-
Contrast Ratio	1,000:1	-	-
Response Time	5	ms	-
View Angle(H/V)	170/160	-	-
Input Voltage	+5.0	V	-
Power Consumption	17.7	Watt	-
Module Weight	2,500 (Typ)	g	-
Outline Dimension(H x V x D)	544.8x320.5x11.9(max)	mm	-
Electrical Interface (Logic)	2ch LVDS	-	-
Support Color	16.7M	-	-
NTSC	72 %	%	-
Optimum Viewing Direction	6 o'clock	-	-
Surface Treatment	AG/3H	-	-

Document Title	M236MWF2 R0 Customer Approved Specification	Page No.	5/26
Document No.	A-M236MWF2-R0-153-02	Issue date	2012/09/27
		Revision	00

### 1.4 Functional Block Diagram

Figure 1 shows the functional block diagram of the LCD module.

**Figure 1 Block Diagram**

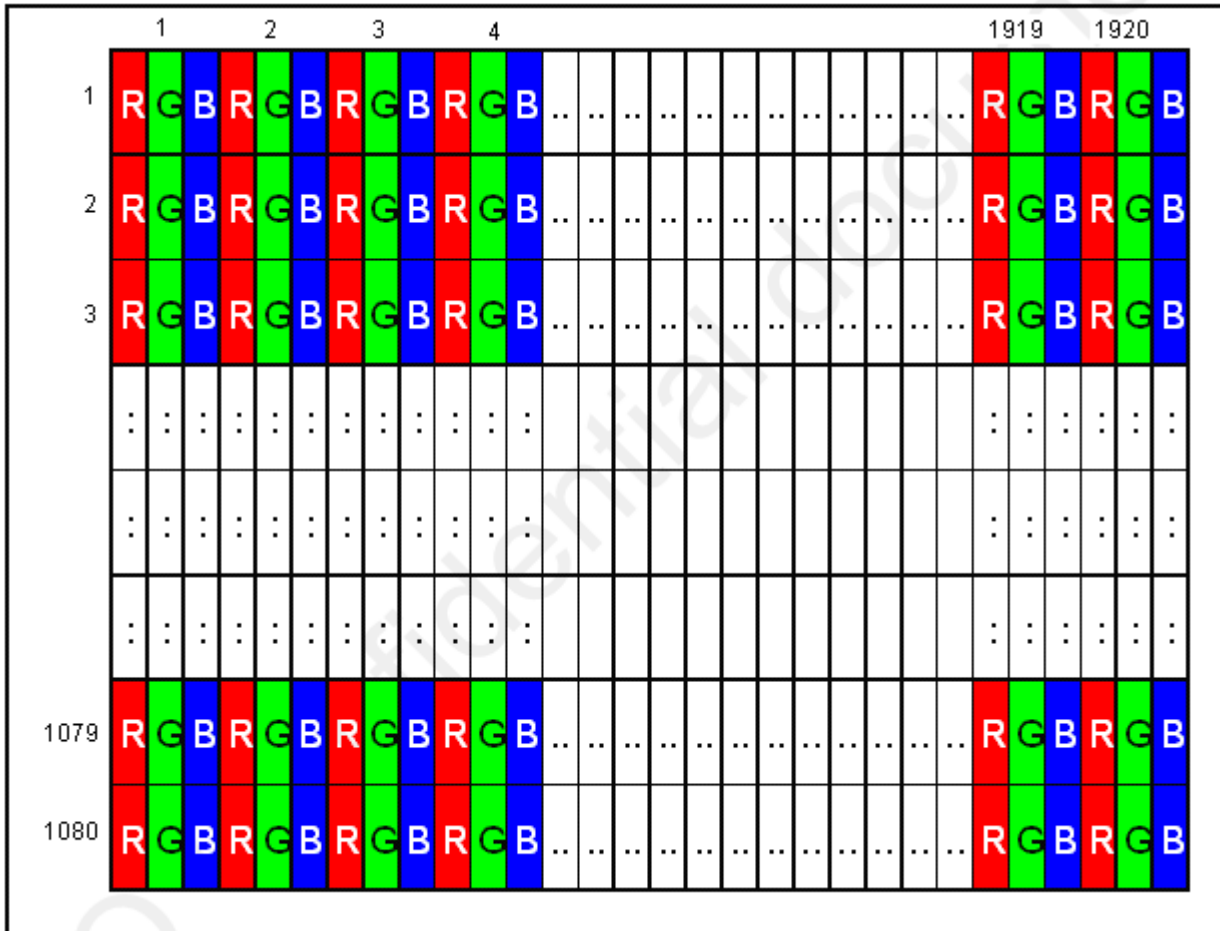


Document Title	M236MWF2 R0 Customer Approved Specification			Page No.	6/26
Document No.	A-M236MWF2-R0-153-02	Issue date	2012/09/27	Revision	00

**1.5 Pixel Format Image**

Figure 2 shows the relationship of the input signals and LCD pixel format image.

**Figure 2 Pixel Format**



Document Title	M236MWF2 R0 Customer Approved Specification			Page No.	7/26
Document No.	A-M236MWF2-R0-153-02	Issue date	2012/09/27	Revision	00

## 2 Absolute Maximum Ratings

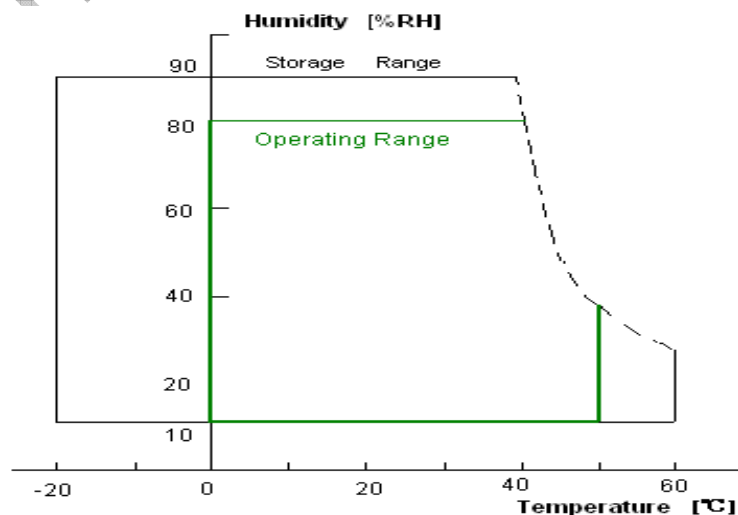
The followings are maximum values which, if exceeded, may cause faulty operation or damage to the LCD module.

**Table 1**

Item	Symbol	Min.	Max.	Unit	Conditions
Supply Voltage	V <sub>DD</sub>	-0.3	6.0	V	-
Input Signal	-	-0.3	2.7	V	LVDS Signals
Operating Temperature	TOP	0	50	°C	Note(3)
Operating Humidity	HOP	10	80	%RH	Note(3)
Storage Temperature	TST	-20	60	°C	Note(3)
Storage Humidity	HST	10	90	%RH	Note(3)
Vibration	Level	-	1.5	G	30min. for X, Y, Z axis
	Bandwidth	-	10~500~10	Hz	
Shock	Level	-	50	G	Half sine waveform, 11ms
LED Current	I <sub>LED</sub>	-	60	mA	Per LED Chip

Note:

- (1)Maximum Wet-Bulb should be 39°C and No condensation
- (2)When you apply the LCD module for OA system, please make sure to keep the temperature of LCD module under 60°C.
- (3)Storage /Operating temperature & humidity:



Document Title	M236MWF2 R0 Customer Approved Specification			Page No.	8/26
Document No.	A-M236MWF2-R0-153-02	Issue date	2012/09/27	Revision	00

### 3 Electrical Specification

#### 3.1 Electrical Characteristics

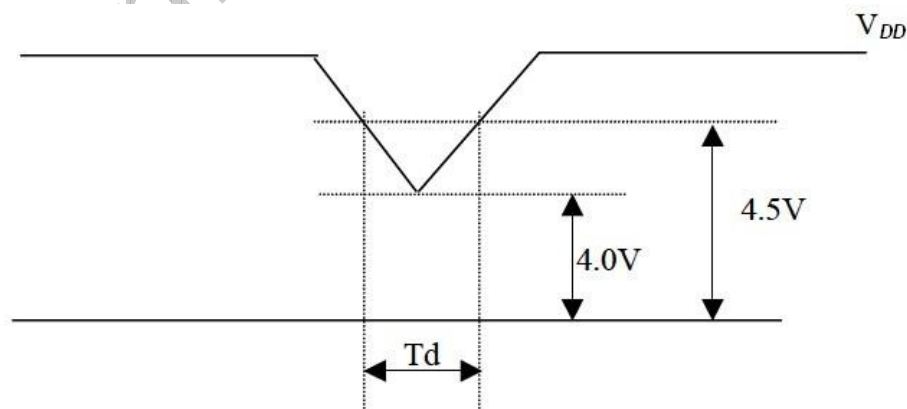
**Table 2 Electrical Characteristics**

Symbol	Parameter	Min.	Typ.	Max.	Units	Condition
$V_{DD}$	Logic/LCD Drive Voltage	4.5	5.0	5.5	V	Note (1)
$I_{DD}$	$V_{DD}$ Current	-	770	900	mA	Black Pattern, 60Hz
$P_{DD}$	$V_{DD}$ Power	-	3.9	4.5	W	Black Pattern, 60Hz
$I_{rush}$	Rush Current	-	-	2.5	A	Note (2)
$V_{DDrp}$	Allowable Logic/LCD Drive Ripple Voltage	-	-	300	mVp-p	-
$V_{LED}$	LED Input	25.2	28.8	31.5	V	-
$V_F$	LED Forward Voltage	2.8	3.2	3.5	V	-
$I_F$	LED Forward Current	-	60	-	mA	-
$I_{PIN}$	LED Light Bar Pin Current	0	120	125	mA	Pin1, Pin2, Pin5 and Pin6 refer to figure 5.
$P_{LED}$	LED Power Consumption	-	13.8	15.8	W	Note(3)
$L_T$	LED Life Time	30,000	-	-	Hours	Note(4)

Note:

(1) $V_{DD}$  Power Dip Condition

**Figure 3  $V_{DD}$  Power Dip**



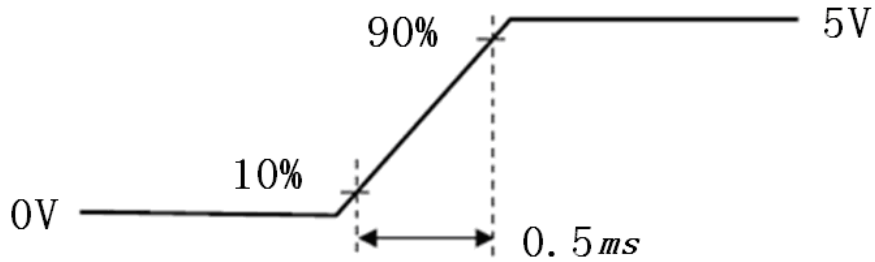
If  $V_{TH} < V_{DD} \leq V_{min}$  and  $t_d \leq 10ms$ , our panel must revive automatically when the voltage returns to normal.



Document Title	M236MWF2 R0 Customer Approved Specification			Page No.	9/26
Document No.	A-M236MWF2-R0-153-02	Issue date	2012/09/27	Revision	00

(2)Measure Condition

**Figure 4 V<sub>DD</sub> rising time**



- (3) P<sub>LED</sub> is calculation value for reference. P<sub>LED</sub> = 72 x V<sub>F</sub> (Normal Distribution) x I<sub>F</sub> (Normal Distribution); LED Light Bar circuit is 4 parallel ,9 series,and each serie has 2 LED chips In parallel.
- (4) The lifetime of LED is defined as the time when LED packages continue to operate under the conditions at Ta = 25°C and I<sub>F</sub>= 60mA (per chip) until the brightness becomes ≤ 50% of its original value.
- (5)All values are measured at condition of I<sub>F</sub> =60mA and Ta=25°C.

### 3.2 Interface Connections

**Table 3 LVDS Connector Name / Designation**

Manufacturer	Starconn (or equivalent)
Type / Part Number	093G30-B2001A-M4(Starconn)



Document Title	M236MWF2 R0 Customer Approved Specification			Page No.	10/26
Document No.	A-M236MWF2-R0-153-02	Issue date	2012/09/27	Revision	00

**Table 4 LVDS Signal Pin Assignment**

Pin #	Signal Name	Description	Remarks
1	RXinO0-	Negative LVDS differential data input(0)	-
2	RXinO0+	Positive LVDS differential data input(0)	-
3	RXinO1-	Negative LVDS differential data input(1)	-
4	RXinO1+	Positive LVDS differential data input(1)	-
5	RXinO2-	Negative LVDS differential data input(2)	-
6	RXinO2+	Positive LVDS differential data input(2)	-
7	GND	Power Ground	-
8	RXOC-	Negative LVDS differential data input(clock)	-
9	RXOC+	Positive LVDS differential data input(clock)	-
10	RXinO3-	Negative LVDS differential data input(3)	-
11	RXinO3+	Positive LVDS differential data input(3)	-
12	RXinE0-	Negative LVDS differential data input(0)	-
13	RXinE0+	Positive LVDS differential data input(0)	-
14	GND	Power Ground	-
15	RXinE1-	Negative LVDS differential data input(1)	-
16	RXinE1+	Positive LVDS differential data input(1)	-
17	GND	Power Ground	-
18	RXinE2-	Negative LVDS differential data input(2)	-
19	RXinE2+	Positive LVDS differential data input(2)	-
20	RXEC-	Negative LVDS differential data input(clock)	-
21	RXEC+	Positive LVDS differential data input(clock)	-
22	RXinE3-	Negative LVDS differential data input(3)	-
23	RXinE3+	Positive LVDS differential data input(3)	-
24	GND	Power Ground	-
25	NC	No Contact	-
26	BIST	When BIST = HIGH and no any LVDS input signals, the internal pattern generator actives. Keep low for normal operation.	-
27	NC	No Contact	-
28	VDD	Power Supply	5V(Typ.)
29	VDD	Power Supply	5V(Typ.)
30	VDD	Power Supply	5V(Typ.)

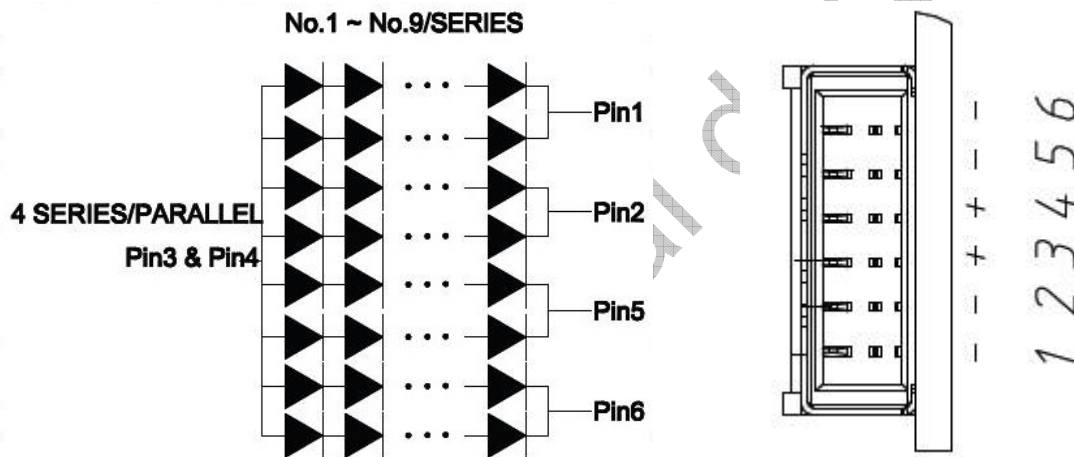
Note: All input signals shall be at low or Hi-Z state when  $V_{DD}$  is off.

Document Title	M236MWF2 R0 Customer Approved Specification			Page No.	11/26
Document No.	A-M236MWF2-R0-153-02	Issue date	2012/09/27	Revision	00

**Table 5 Backlight Connector Pin Assignment**

Pin No.	Symbol	Description
1	IRLED1	LED current sense for string1
2	IRLED2	LED current sense for string2
3	VLED	LED power supply
4	VLED	LED power supply
5	IRLED3	LED current sense for string3
6	IRLED4	LED current sense for string4

Note: Backlight connector type is ENTERY 3707K-Q06N-01L.

**Figure 5 LED Circuit Diagram and LED Connector**


### 3.3 LVDS Receiver

The built-in LVDS receiver is compatible with (ANSI/TIA/TIA-644 ) standard.

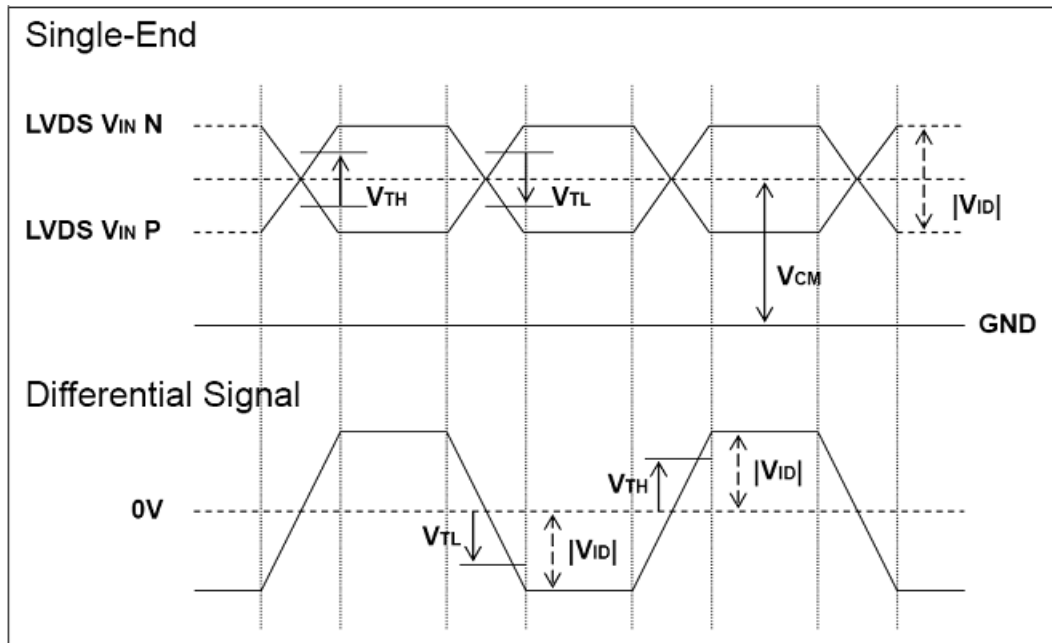
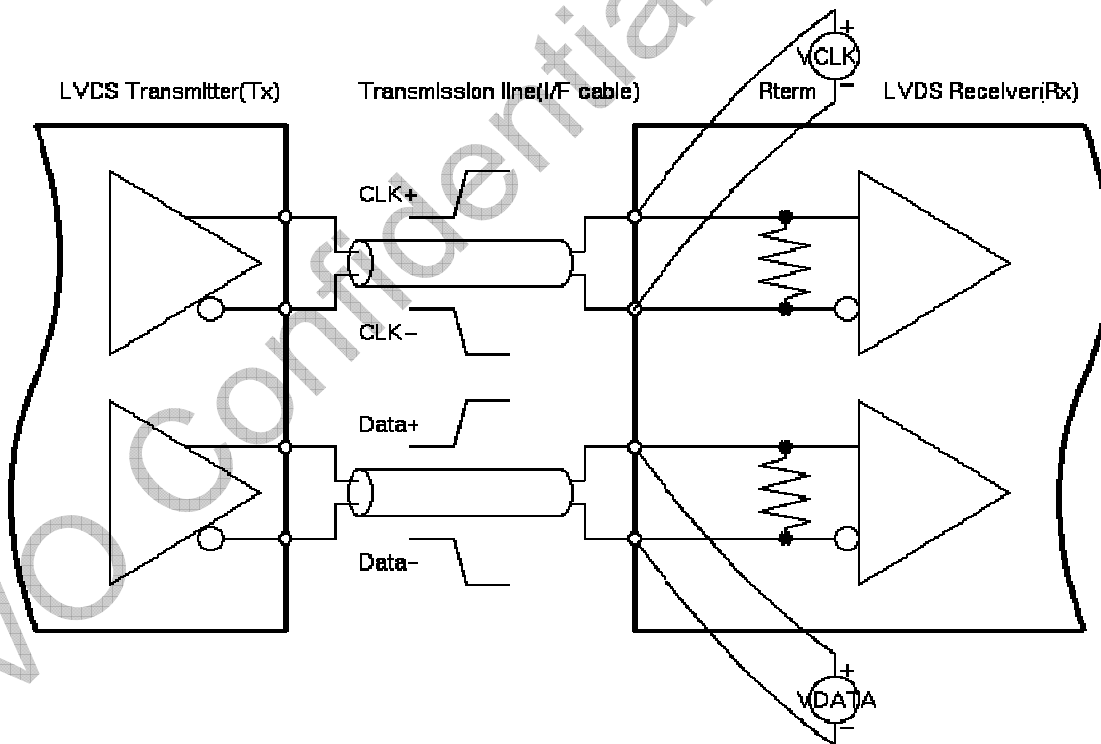
**Table 6 LVDS Receiver Electrical Characteristics**

Parameter	Symbol	Min.	Typ.	Max.	Unit	Conditions
Differential Input High Threshold	$V_{th}$	-	-	+100	mV	$V_{cm}=+1.2V$
Differential Input Low Threshold	$V_{tl}$	-100	-	-	mV	$V_{cm}=+1.2V$
Magnitude Differential Input	$ V_{id} $	100	-	600	mV	-
Common Mode Voltage	$V_{cm}$	1.0	1.2	1.4	V	$V_{th}-V_{tl}=200mV$

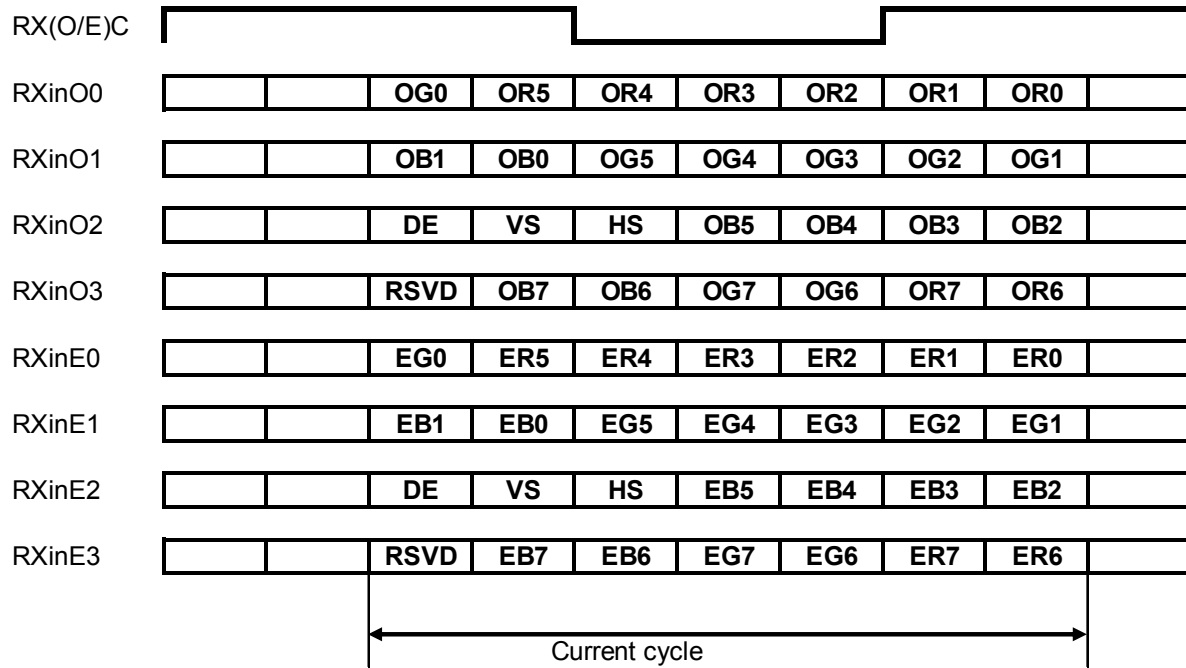
Note:

- (1) Input signals shall be at low or Hi-Z state when  $V_{DD}$  is off.
- (2) All electrical characteristics for LVDS signal are defined and shall be measured at the interface connector of LCD.
- (3) All values are measured at condition of  $V_{DD} = 5V$  and  $T_a = 25^\circ C$ .

Document Title	M236MWF2 R0 Customer Approved Specification	Page No.	12/26
Document No.	A-M236MWF2-R0-153-02	Issue date	2012/09/27
		Revision	00

**Figure 6 Voltage Definitions**

**Figure 7 Measurement System**


Document Title	M236MWF2 R0 Customer Approved Specification			Page No.	13/26
Document No.	A-M236MWF2-R0-153-02	Issue date	2012/09/27	Revision	00

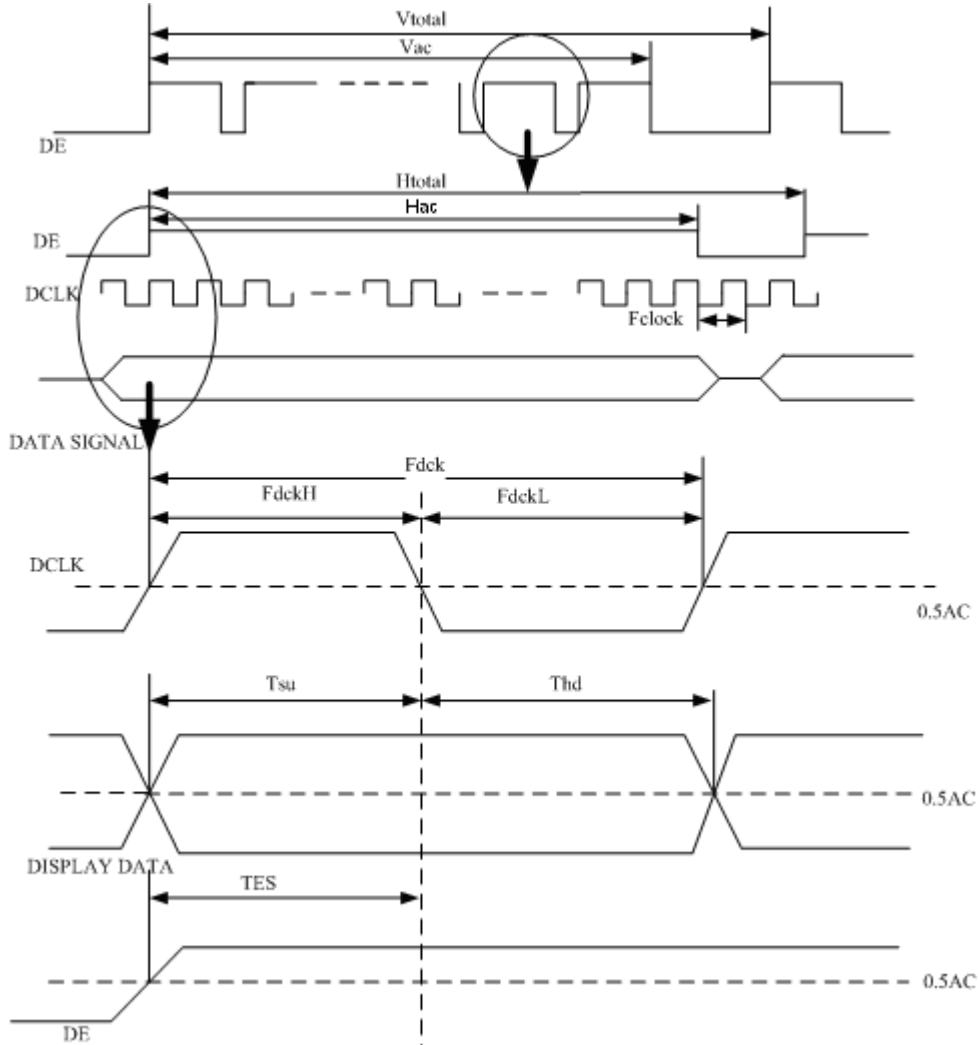
**Figure 8 LVDS Data Mapping**


### 3.4 Interface Timings

**Table 7 Interface Timings**

Parameter	Symbol	Unit	Min.	Typ.	Max.
LVDS Clock Frequency(dual)	$F_{dck}$	MHz	57.8	73.3	96.7
H Total Time	$H_{total}$	Clocks	1,050	1,100	1,150
H Active Time	$H_{ac}$	Clocks	960	960	960
V Total Time	$V_{total}$	Lines	1,100	1,110	1,121
V Active Time	$V_{ac}$	Lines	1,080	1,080	1,080
Frame Rate	$V_{sync}$	Hz	50.0	60.0	75.0

Document Title	M236MWF2 R0 Customer Approved Specification			Page No.	14/26
Document No.	A-M236MWF2-R0-153-02	Issue date	2012/09/27	Revision	00

**Figure 9 Timing Characteristics**


Note: TES is data enable signal setup time.

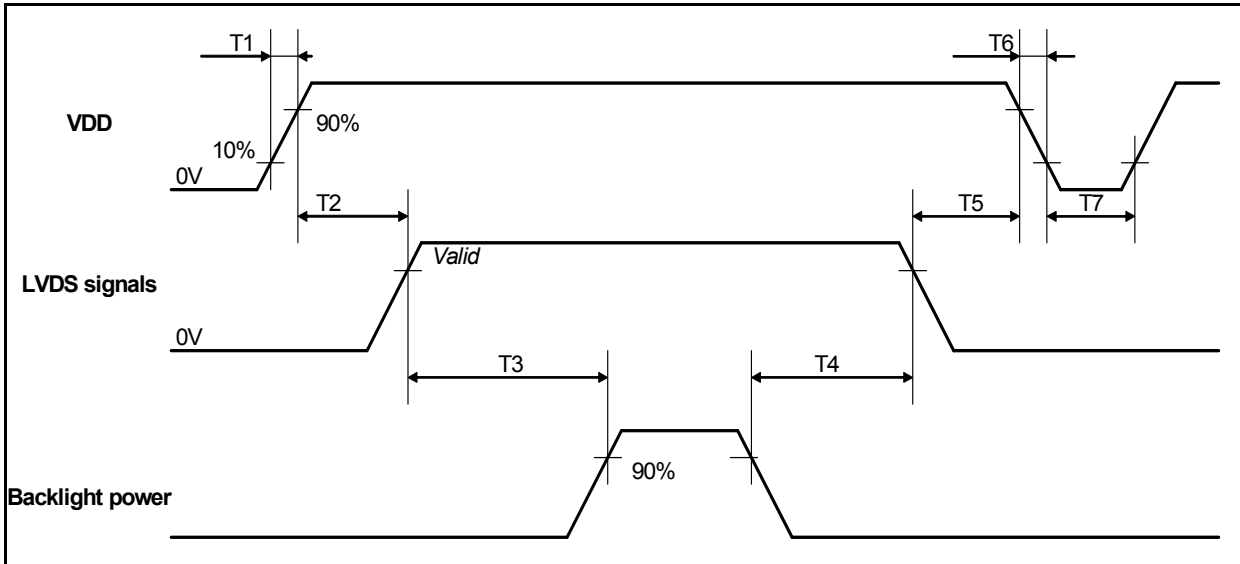
Document Title	M236MWF2 R0 Customer Approved Specification			Page No.	15/26
Document No.	A-M236MWF2-R0-153-02	Issue date	2012/09/27	Revision	00

### 3.5 Power ON/OFF Sequence

$V_{DD}$  power, interface signals, and lamp on/off sequence are showing on Figure 10.

Signals shall be Hi-Z state or low level when  $V_{DD}$  is off.

**Figure 10**



**Table 8 Power Sequencing Requirements**

Parameter	Symbol	Unit	Min.	Typ.	Max.
VDD Rise Time	T1	ms	0.5	-	10
VDD Good to Signal Valid	T2	ms	0	-	50
Signal Valid to Backlight On	T3	ms	200	-	450
Backlight Off to Signal Disable	T4	ms	200	-	450
Signal Disable to Power Down	T5	ms	0	-	50
VDD Fall Time	T6	ms	0	-	100
Power Off	T7	ms	500	-	-



Document Title	M236MWF2 R0 Customer Approved Specification			Page No.	16/26
Document No.	A-M236MWF2-R0-153-02	Issue date	2012/09/27	Revision	00

#### 4 Optical Characteristics

The optical characteristics are measured under stable conditions as following notes.

**Table 9 Optical Characteristics**

Item	Conditions		Specification				
			Min.	Typ.	Max.	Unit	Note
Viewing Angle [degrees] K=Contrast Ratio>10	Horizontal	$\theta_{x-}$ (Left)	75	85	-	Deg.	(1),(2)
		$\theta_{x+}$ (Right)	75	85	-	Deg.	
	Vertical	$\theta_{y+}$ (Up)	70	80	-	Deg.	
		$\theta_{y-}$ (Down)	70	80	-	Deg.	
Contrast Ratio	Center		600	1,000	-	-	(1),(3)
Response Time	Rising		-	1.3	-	ms	
	Falling		-	3.7	-	ms	
	Rising + Falling		-	5.0	8.0	ms	(1),(4)
Color Chromaticity (CIE1931)	Red	x	Typ. -0.03	0.637	Typ. +0.03	-	(1)
	Red	y		0.342		-	(1)
	Green	x		0.313		-	(1)
	Green	y		0.622		-	(1)
	Blue	x		0.152		-	(1)
	Blue	y		0.047		-	(1)
	White	x		0.313		-	(1)
	White	y		0.329		-	(1)
White Luminance	$I_{LED} = 60mA$		250	300		[cd/m <sup>2</sup> ]	(1),(5)
Luminance Uniformity	$I_{LED} = 60mA$ , 9points		70	80	-	[%]	

Note:

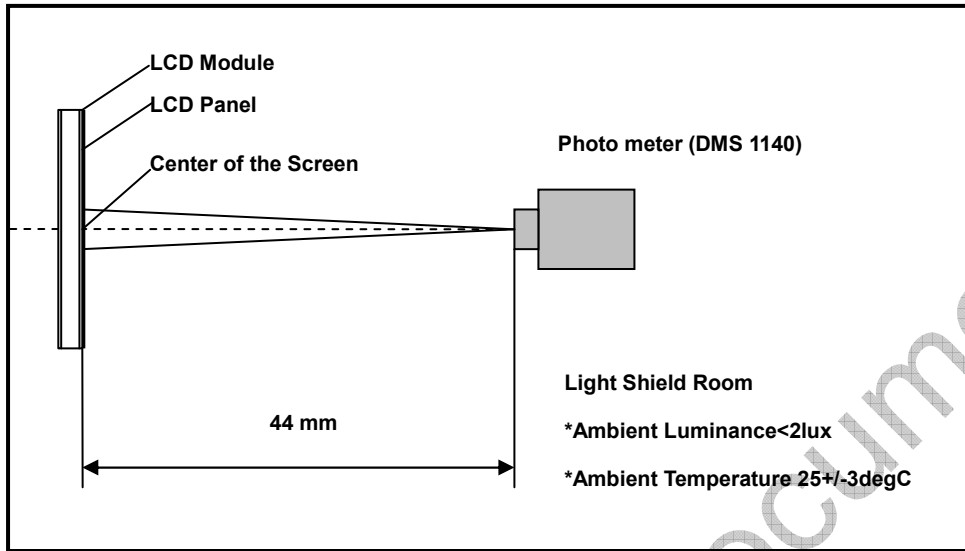
(1)Measurement Setup

The LCD module should be stabilized at condition of  $I_F = 60mA$  and  $T_a = 25^\circ C$  for 30 minutes to avoid abrupt temperature change during measuring. In order to stabilize the luminance, the measurement should be executed after lighting backlight for 30 minutes in a windless room.



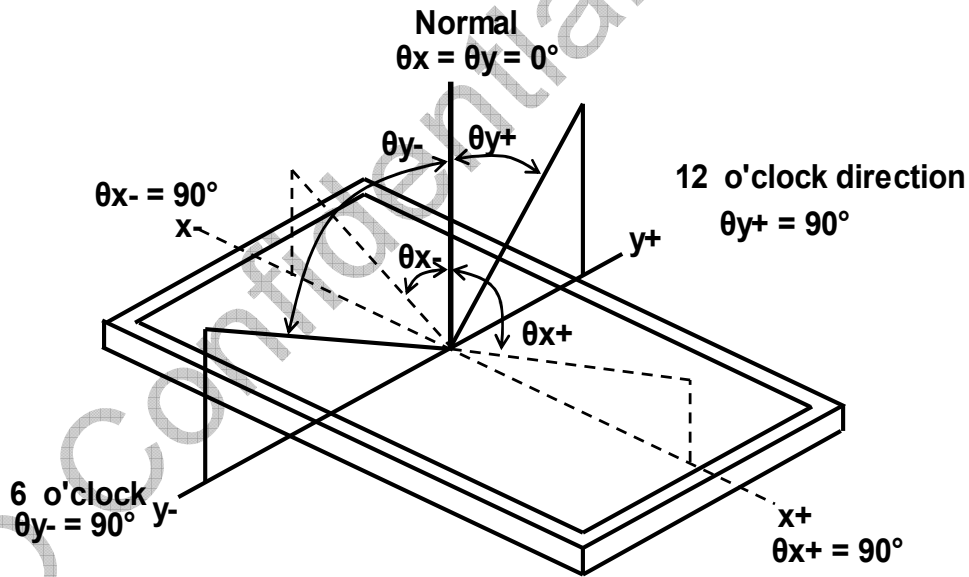
Document Title	M236MWF2 R0 Customer Approved Specification	Page No.	17/26
Document No.	A-M236MWF2-R0-153-02	Issue date	2012/09/27
		Revision	00

Figure 11 Measurement Setup



(2) Definition of Viewing Angle

Figure 12 Definition of Viewing Angle



(3) Definition of Contrast Ratio (CR)

The contrast ratio can be calculated by the following expression

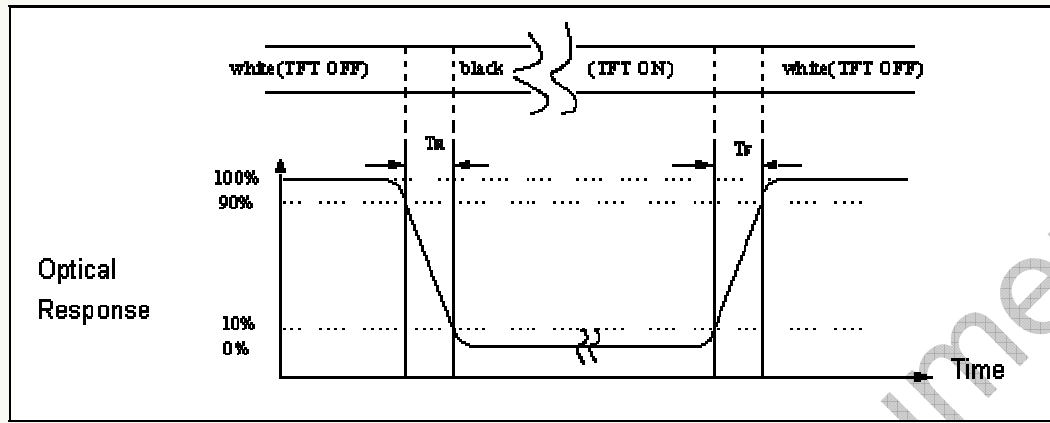
$$\text{Contrast Ratio (CR)} = L_{255} / L_0$$

L255: Luminance of gray level 255, L0: Luminance of gray level 0

(4) Definition of Response Time ( $T_R$ ,  $T_F$ )

Document Title	M236MWF2 R0 Customer Approved Specification	Page No.	18/26
Document No.	A-M236MWF2-R0-153-02	Issue date	2012/09/27
		Revision	00

Figure 13 Definition of Response Time

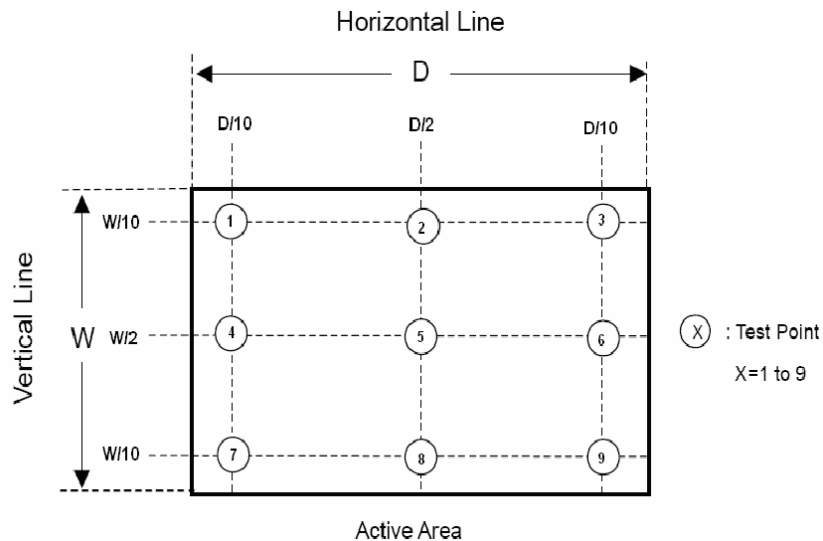


(5) Definition of White Luminance and Luminance Uniformity:

Measure the luminance of gray level 255 at point 5 (Fig. 14).

$$\text{Luminance Uniformity} = \frac{\text{Minimum Brightness of nine points (P1~P9)}}{\text{Maximum Brightness of nine points (P1~P9)}}$$

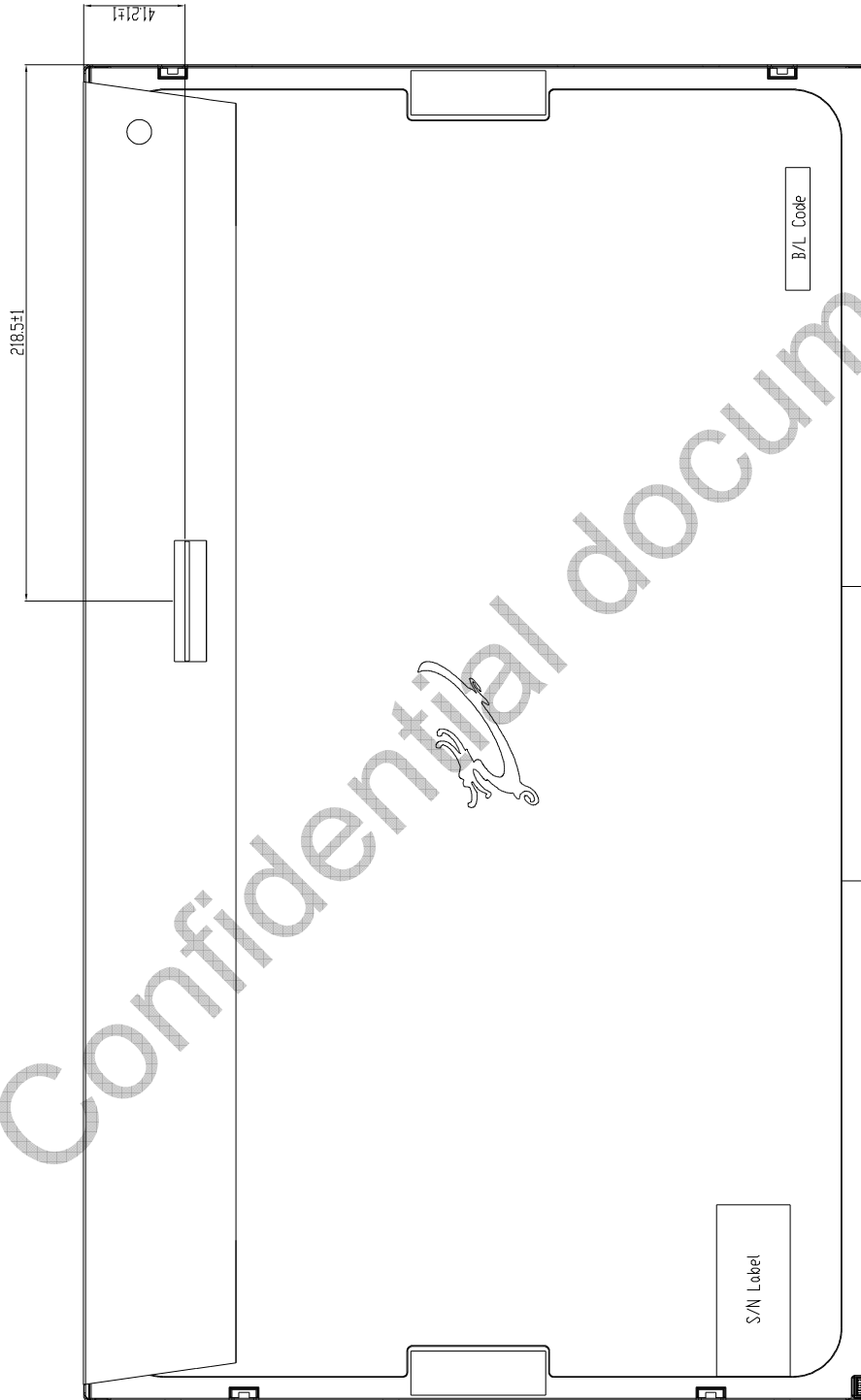
Figure 14 Measurement Locations of 9 Points





Document Title	M236MWF2 R0 Customer Approved Specification			Page No.	20/26
Document No.	A-M236MWF2-R0-153-02	Issue date	2012/09/27	Revision	00

**Figure 16 Reference Outline Drawing (Back Side)**



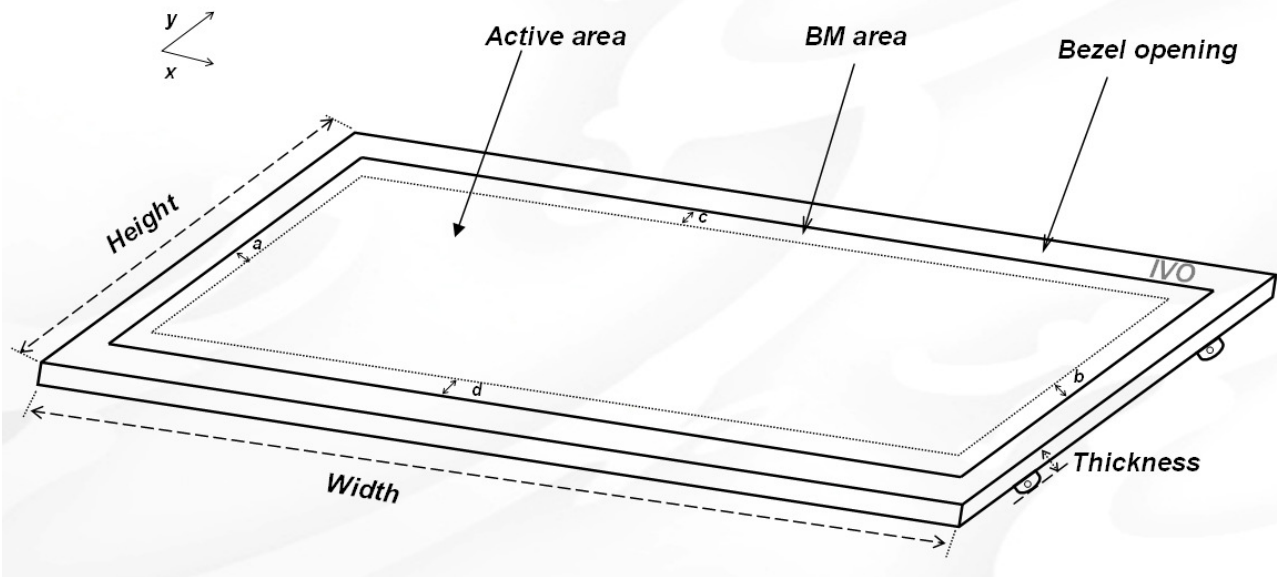
Note : The details of LED Connector refer to Figure 5.

Document Title	M236MWF2 R0 Customer Approved Specification			Page No.	21/26
Document No.	A-M236MWF2-R0-153-02	Issue date	2012/09/27	Revision	00

### 5.1 Dimension Specifications

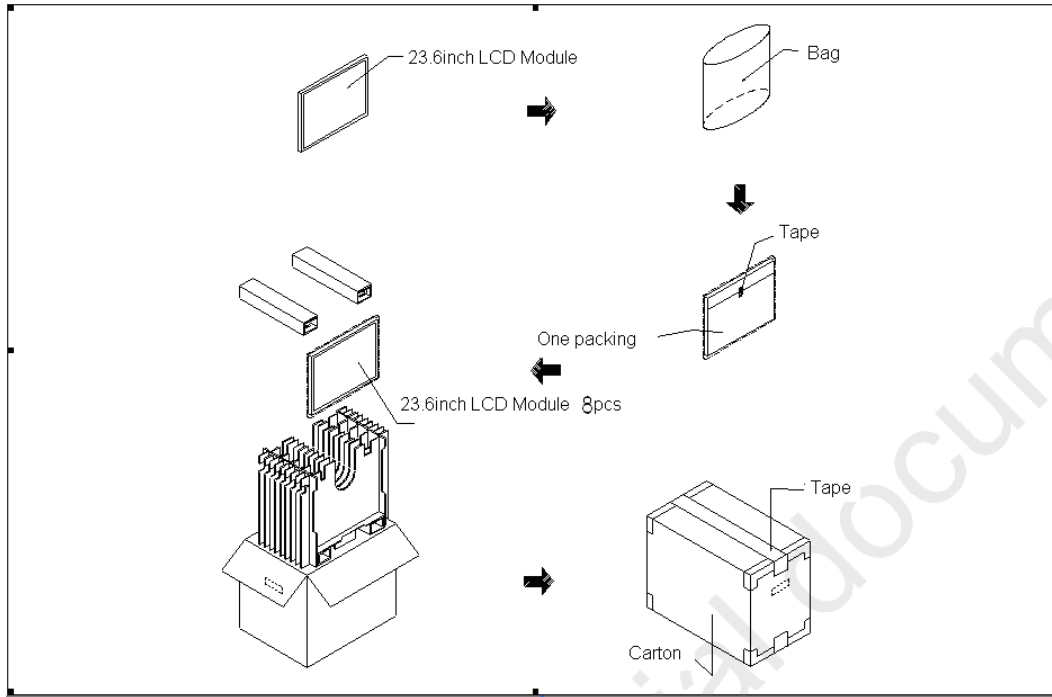
Table 10

Item		Value	Unit
Width		$544.8 \pm 0.5$	mm
Height		$320.5 \pm 0.5$	mm
Thickness		$11.4 \pm 0.5$	mm
Bezel Opening	X	$525.22 \pm 0.3$	mm
	Y	$297.22 \pm 0.3$	mm
Weight (Max)		2,800	g
BM Width	a-b   &   c-d	$\leq 1.0$	mm

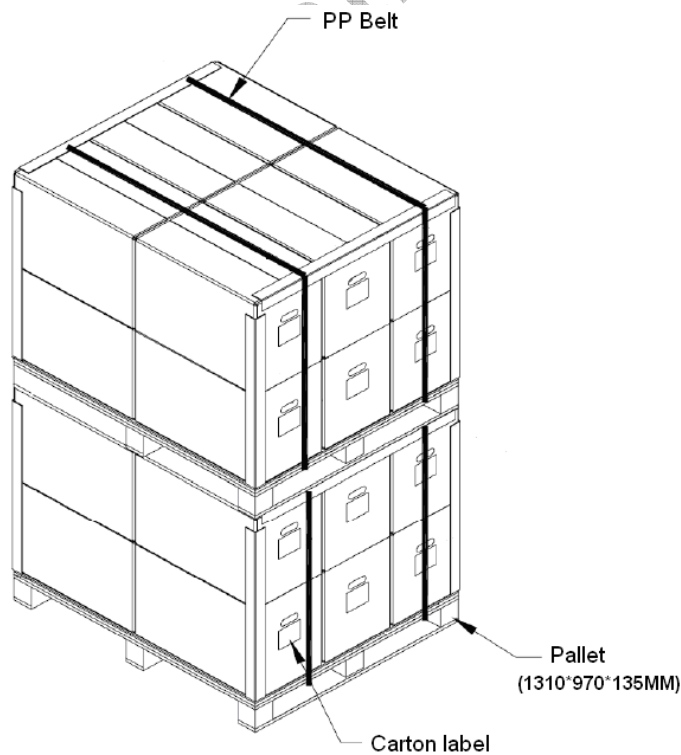


Document Title	M236MWF2 R0 Customer Approved Specification	Page No.	22/26
Document No.	A-M236MWF2-R0-153-02	Issue date	2012/09/27
		Revision	00

## 6 Package Specification

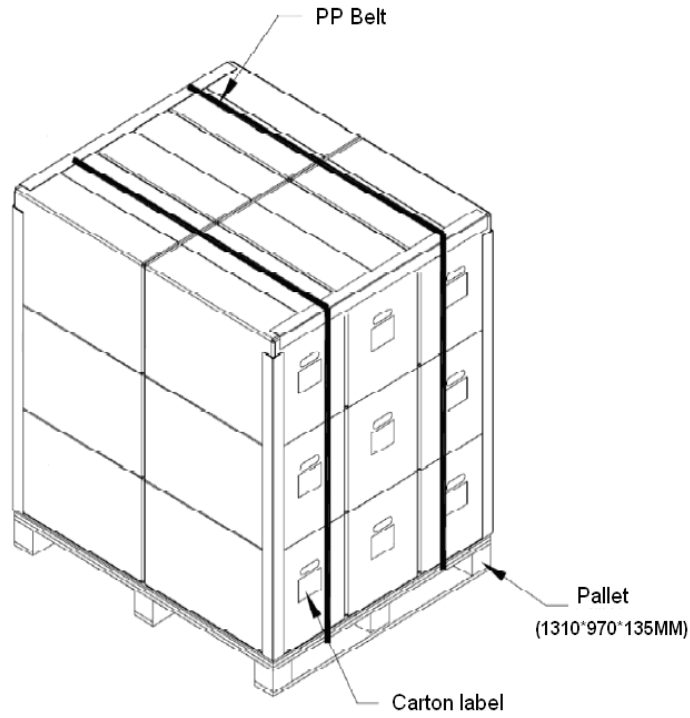


### Sea Transportation



Document Title	M236MWF2 R0 Customer Approved Specification			Page No.	23/26
Document No.	A-M236MWF2-R0-153-02	Issue date	2012/09/27	Revision	00

**Air Transportation**



No Confidential Document



# InfoVision Optoelectronics (Kunshan)Co., Ltd.

Document Title	M236MWF2 R0 Customer Approved Specification			Page No.	24/26
Document No.	A-M236MWF2-R0-153-02	Issue date	2012/09/27	Revision	00

## 7 Lot Mark

Module name

Development product name

H/W: 2<sup>nd</sup> source/ version

F/W: EDID Version (NB Product only)

23 Product code

Overseas

Lot mark

### 7.1 Lot Mark

1	2	3	4	5	6	7	8	9	10	11	12	13	14	15	16	17	18	19	20
---	---	---	---	---	---	---	---	---	----	----	----	----	----	----	----	----	----	----	----

Code 1,2,4,5,6,7,8,9,10,11,16: IVO internal flow control code.  
 Code 3: Production Location.  
 Code 12: Production Year.  
 Code 13: Production Month.  
 Code 14,15: Production Date.  
 Code 17,18,19,20: Serial Number.

Note (1) Production Year

Year	2006	2007	2008	2009	2010	2011	2012	2013	2014	2015
Mark	6	7	8	9	A	B	C	D	E	F

Note (2) Production Month

Month	Jan.	Feb.	Mar.	Apr.	May.	Jun.	Jul.	Aug.	Sep.	Oct.	Nov.	Dec.
Mark	1	2	3	4	5	6	7	8	9	A	B	C

### 7.2 23 product barcode

1	2	3	4	5	6	7	8	9	10	11	12	13	14	15	16	17	18	19	20	21	22	23
---	---	---	---	---	---	---	---	---	----	----	----	----	----	----	----	----	----	----	----	----	----	----

Code 1,2: MD Module Domain.  
 Code 3,4,5,6,7: IVO Internal Module Name.  
 Code 8,9,10,13,16: IVO Internal Flow Control Code.  
 Code 11,12: Cell location "Suzhou" is defined as "SZ".  
 Code 14,15: Module line "kunshan" is defined as "KS".  
 Code 17,18,19 : Year, Month, Day Refer to IVO Barcode Note(1),Note(2) in Page23.  
 Code 20~23 : Serial Number.



Document Title	M236MWF2 R0 Customer Approved Specification			Page No.	25/26
Document No.	A-M236MWF2-R0-153-02	Issue date	2012/09/27	Revision	00

## 8 General Precaution

### 8.1 Use Restriction

This product is not authorized for use in life supporting systems, aircraft navigation control systems, military systems and any other application where performance failure could be life-threatening or otherwise catastrophic.

### 8.2 Handling Precaution

- 1) Please mount LCD module by using mounting holes arranged in four corners tightly.
- 2) Do not disassemble or modify the module. It may damage sensitive parts inside LCD module, and may cause scratches or dust on the display. IVO does not warrant the module, if customers disassemble or modify the module.
- 3) If LCD panel is broken and liquid crystal spills out, do not ingest or inhale liquid crystal, and do not contact liquid crystal with skin. If liquid crystal contacts mouth or eyes, rinse out with water immediately. If liquid crystal contacts skin or cloths, wash it off immediately with alcohol and Rinse thoroughly with water.
- 4) Disconnect power supply before handling LCD module.
- 5) Refrain from strong mechanical shock and /or any force to the module.
- 6) Do not exceed the absolute maximum rating values, such as the supply voltage variation, input voltage variation, variation in parts' parameters, environmental temperature; etc otherwise LCD module may be damaged. It's recommended employing protection circuit for power supply.
- 7) Do not touch, push or rub the polarizer with anything harder than HB pencil lead. And please do not push the panel hard or rub with dust clothes with chemical treatment. Do not touch the surface of polarizer for bare hand or greasy cloth. (Some cosmetics are detrimental to the polarizer.)
- 8) When the surface is dusty, please wipe gently with absorbent cotton or other soft Material. When cleaning the adhesives, please use absorbent cotton wetted with a little petroleum benzene. Normal-hexane is recommended for cleaning the adhesives used to attach front/ rear polarizer. Do not use acetone, toluene and alcohol because they cause chemical damage to the polarizer.
- 9) Wipe off saliva or water drops as soon as possible. Their long time contact with polarizer causes deformations and color fading.
- 10) Protection film must be removed very slowly from the surface of LCD module to prevent from electrostatic occurrence.
- 11) Because LCD module uses CMOS-IC on circuit board and TFT-LCD panel, it is very weak to electrostatic discharge, Please be careful with electrostatic discharge .Persons who handle the module should be grounded through adequate methods.
- 12) Do not adjust the variable resistor located on the module.

### 8.3 Storage Precaution

- 1) Please do not leave LCD module in the environment of high humidity and high temperature for a long time.
- 2) The module shall not be exposed under strong light such as direct sunlight. Otherwise, Display characteristics may be changed.
- 3) The module should be stored in a dark place. It is prohibited to apply sunlight or fluorescent light in storage.

### 8.4 Operation Precaution

- 1) Do not connect or disconnect the module in the "Power On" condition.
- 2) Power supply should always be turned on/off by "Power on/off sequence".



## InfoVision Optoelectronics (Kunshan)Co., Ltd.

Document Title	M236MWF2 R0 Customer Approved Specification			Page No.	26/26
Document No.	A-M236MWF2-R0-153-02	Issue date	2012/09/27	Revision	00

- 3) Module has high frequency circuits. Sufficient suppression to the electromagnetic interference should be done by system manufacturers. Grounding and shielding methods may be important to minimize the interference.
- 4) After installation of the TFT Module into an enclosure, do not twist nor bend the TFT Module even momentary. At designing the enclosure, it should be taken into consideration that no bending/twisting forces are applied to the TFT Module from outside. Otherwise the TFT Module may be damaged.

### 8.5 Others

- 1) Ultra-violet ray filter is necessary for outdoor operation.
- 2) Avoid condensation of water which may result in improper operation or disconnection of electrode.
- 3) If the module keeps displaying the same pattern for a long period of time, the image may be "Sticked" to the screen.
- 4) This module has its circuitry PCB on the rear side and should be handled carefully in order not to be stressed.

### 8.6 Disposal

When disposing LCD module, obey the local environmental regulations.