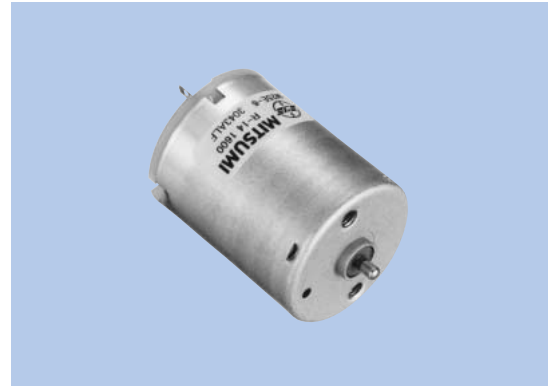


DC Mini-Motors M25E-6 Series

Applications

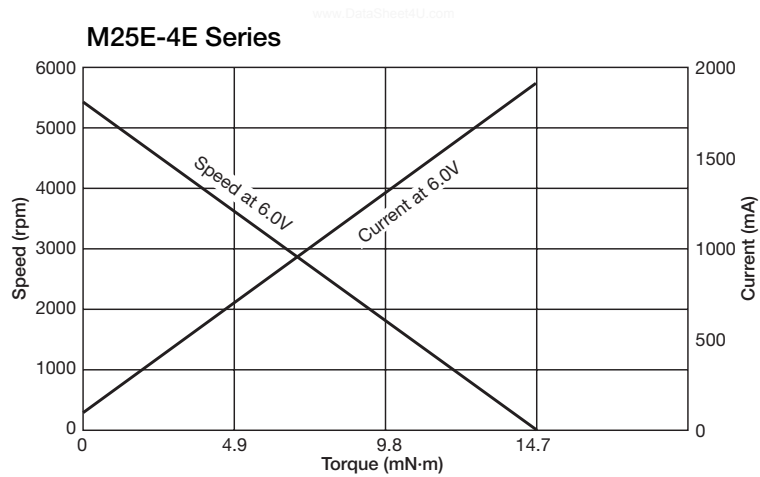
Tonometer pump.



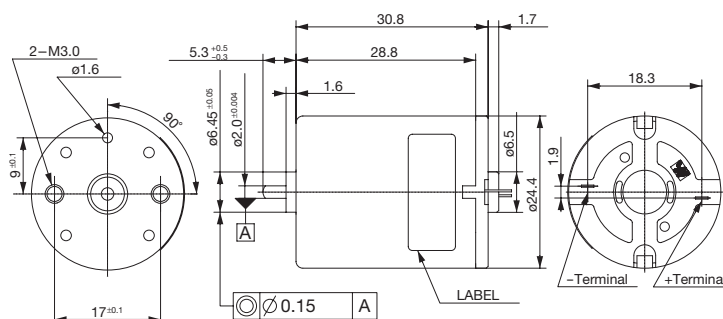
SPECIFICATIONS

Items	SPEC-NO	R-14 1600
Rated Voltage (V)		6
Voltage Range (V)		4.2~7.2
Rated Load (mN·m)		2.94
No Load Speed (rpm)		5300
No Load Current (mA)		42
Starting Torque (mN·m)		14.9
Rotation		CW

CHARACTERISTICS



DIMENSIONS



Unit : mm