



Product Specification

M270HTN01.1

AU OPTRONICS CORPORATION

- () Preliminary Specification
- (V) Final Specification

Module	27" Color TFT-LCD
Model Name	M270HTN01.1

Customer	Date
_____	_____
Approved by	
_____	_____

Note: This Specification is subject to change without notice.

Approved by	Date
<u>Howard Lee</u>	<u>Jul. 03, 2013</u>
Prepared by	Date
<u>Evelyn Sung</u>	<u>Jul. 03, 2013</u>

AU Optronics corporation

Contents

1 Handling Precautions	4
2 General Description	5
2.1 Display Characteristics.....	5
2.2 Absolute Maximum Rating of Environment	6
2.3 Optical Characteristics	7
2.4 Mechanical Characteristics.....	11
3 TFT-LCD Module	12
3.1 Block Diagram.....	12
The following shows the block diagram of the 27 inch Color TFT-LCD Module.....	12
3.2 Interface Connection.....	13
3.2.1 Connector Type.....	13
3.2.2 Connector Pin Assignment.....	13
3.3 Electrical Characteristics.....	15
3.3.1 Absolute Maximum Rating	15
3.3.2 Recommended Operating Condition.....	15
3.4 Signal Characteristics	16
3.4.1 LCD Pixel Format.....	16
3.4.2 LVDS Data Format	16
3.4.3 Color versus Input Data	17
3.4.4 LVDS Specification.....	18
3.4.5 Input Timing Specification	20
3.4.6 Input Timing Diagram.....	21
3.5 Power ON/OFF Sequence	22
4 Backlight Unit	23
4.1 Block Diagram.....	23
4.2 Interface Connection.....	24
4.2.1 Connector Type.....	24
Backlight Connector dimension:	24
Mating Connector dimension:	25
4.2.2 Connector Pin Assignment.....	26
4.3 Electrical Characteristics.....	27
4.3.1 Absolute Maximum Rating	27
4.3.2 Recommended Operating Condition.....	27
5 Reliability Test	29
6 Shipping Label	30
7 Mechanical Characteristics	31
8 Packing Specification	33

Record of Revision

Version	Date	Page	Old description	New Description	Remark																																																																																																																																																																																																									
0.1	2013/3/22	All	First version release	-																																																																																																																																																																																																										
1.1	2013/5/24	20	<p>3.4.5 Input Timing Specification</p> <table border="1"> <thead> <tr> <th>Symbol</th> <th>Description</th> <th>Period</th> <th>Min.</th> <th>Typ.</th> <th>Max.</th> <th>Unit</th> <th>Remark</th> </tr> </thead> <tbody> <tr> <td>Tv</td> <td rowspan="3">Vertical Sync</td> <td>Field</td> <td>TBD</td> <td>1180</td> <td>TBD</td> <td>Tb</td> <td></td> </tr> <tr> <td>TvHs (A)</td> <td>Active</td> <td>TBD</td> <td>1080</td> <td>TBD</td> <td>Tb</td> <td></td> </tr> <tr> <td>TvHs (B)</td> <td>Blanking</td> <td>TBD</td> <td>40</td> <td>TBD</td> <td>Tb</td> <td></td> </tr> <tr> <td>Fv</td> <td rowspan="3">Horizontal Sync</td> <td>Frequency</td> <td>50</td> <td>60</td> <td>70</td> <td>Hz</td> <td></td> </tr> <tr> <td>FvHs (A)</td> <td>Active</td> <td>TBD</td> <td>500</td> <td>TBD</td> <td>Tb</td> <td></td> </tr> <tr> <td>FvHs (B)</td> <td>Blanking</td> <td>TBD</td> <td>40</td> <td>TBD</td> <td>Tb</td> <td></td> </tr> <tr> <td>Fv</td> <td rowspan="3">Line Clock</td> <td>Frequency</td> <td>TBD</td> <td>70.4</td> <td>TBD</td> <td>Hz</td> <td>Note 4-5</td> </tr> <tr> <td>FvHs (A)</td> <td>Period</td> <td>500</td> <td>340</td> <td>500</td> <td>ns</td> <td>SPICE</td> </tr> <tr> <td>FvHs (B)</td> <td>Frequency</td> <td>50</td> <td>120</td> <td>144</td> <td>kHz</td> <td>Note 4-5</td> </tr> </tbody> </table>	Symbol	Description	Period	Min.	Typ.	Max.	Unit	Remark	Tv	Vertical Sync	Field	TBD	1180	TBD	Tb		TvHs (A)	Active	TBD	1080	TBD	Tb		TvHs (B)	Blanking	TBD	40	TBD	Tb		Fv	Horizontal Sync	Frequency	50	60	70	Hz		FvHs (A)	Active	TBD	500	TBD	Tb		FvHs (B)	Blanking	TBD	40	TBD	Tb		Fv	Line Clock	Frequency	TBD	70.4	TBD	Hz	Note 4-5	FvHs (A)	Period	500	340	500	ns	SPICE	FvHs (B)	Frequency	50	120	144	kHz	Note 4-5	<p>3.4.5 Input Timing Specification</p> <table border="1"> <thead> <tr> <th>Symbol</th> <th>Description</th> <th>Period</th> <th>Min.</th> <th>Typ.</th> <th>Max.</th> <th>Unit</th> <th>Remark</th> </tr> </thead> <tbody> <tr> <td>Tv</td> <td rowspan="3">Vertical Sync</td> <td>Field</td> <td>TBD</td> <td>1180</td> <td>TBD</td> <td>Tb</td> <td></td> </tr> <tr> <td>TvHs (A)</td> <td>Active</td> <td>1080</td> <td>1080</td> <td>1080</td> <td>Tb</td> <td></td> </tr> <tr> <td>TvHs (B)</td> <td>Blanking</td> <td>52</td> <td>60</td> <td>70</td> <td>Tb</td> <td></td> </tr> <tr> <td>Fv</td> <td rowspan="3">Horizontal Sync</td> <td>Frequency</td> <td>50</td> <td>60</td> <td>70</td> <td>Hz</td> <td></td> </tr> <tr> <td>FvHs (A)</td> <td>Active</td> <td>500</td> <td>500</td> <td>500</td> <td>Tb</td> <td></td> </tr> <tr> <td>FvHs (B)</td> <td>Blanking</td> <td>24</td> <td>40</td> <td>50</td> <td>Tb</td> <td></td> </tr> <tr> <td>Fv</td> <td rowspan="3">Line Clock</td> <td>Frequency</td> <td>50</td> <td>60</td> <td>70</td> <td>Hz</td> <td>Note 4-5</td> </tr> <tr> <td>FvHs (A)</td> <td>Period</td> <td>500</td> <td>340</td> <td>500</td> <td>ns</td> <td>SPICE</td> </tr> <tr> <td>FvHs (B)</td> <td>Frequency</td> <td>50</td> <td>120</td> <td>144</td> <td>kHz</td> <td>Note 4-5</td> </tr> </tbody> </table>	Symbol	Description	Period	Min.	Typ.	Max.	Unit	Remark	Tv	Vertical Sync	Field	TBD	1180	TBD	Tb		TvHs (A)	Active	1080	1080	1080	Tb		TvHs (B)	Blanking	52	60	70	Tb		Fv	Horizontal Sync	Frequency	50	60	70	Hz		FvHs (A)	Active	500	500	500	Tb		FvHs (B)	Blanking	24	40	50	Tb		Fv	Line Clock	Frequency	50	60	70	Hz	Note 4-5	FvHs (A)	Period	500	340	500	ns	SPICE	FvHs (B)	Frequency	50	120	144	kHz	Note 4-5																																																						
Symbol	Description	Period	Min.	Typ.	Max.	Unit	Remark																																																																																																																																																																																																							
Tv	Vertical Sync	Field	TBD	1180	TBD	Tb																																																																																																																																																																																																								
TvHs (A)		Active	TBD	1080	TBD	Tb																																																																																																																																																																																																								
TvHs (B)		Blanking	TBD	40	TBD	Tb																																																																																																																																																																																																								
Fv	Horizontal Sync	Frequency	50	60	70	Hz																																																																																																																																																																																																								
FvHs (A)		Active	TBD	500	TBD	Tb																																																																																																																																																																																																								
FvHs (B)		Blanking	TBD	40	TBD	Tb																																																																																																																																																																																																								
Fv	Line Clock	Frequency	TBD	70.4	TBD	Hz	Note 4-5																																																																																																																																																																																																							
FvHs (A)		Period	500	340	500	ns	SPICE																																																																																																																																																																																																							
FvHs (B)		Frequency	50	120	144	kHz	Note 4-5																																																																																																																																																																																																							
Symbol	Description	Period	Min.	Typ.	Max.	Unit	Remark																																																																																																																																																																																																							
Tv	Vertical Sync	Field	TBD	1180	TBD	Tb																																																																																																																																																																																																								
TvHs (A)		Active	1080	1080	1080	Tb																																																																																																																																																																																																								
TvHs (B)		Blanking	52	60	70	Tb																																																																																																																																																																																																								
Fv	Horizontal Sync	Frequency	50	60	70	Hz																																																																																																																																																																																																								
FvHs (A)		Active	500	500	500	Tb																																																																																																																																																																																																								
FvHs (B)		Blanking	24	40	50	Tb																																																																																																																																																																																																								
Fv	Line Clock	Frequency	50	60	70	Hz	Note 4-5																																																																																																																																																																																																							
FvHs (A)		Period	500	340	500	ns	SPICE																																																																																																																																																																																																							
FvHs (B)		Frequency	50	120	144	kHz	Note 4-5																																																																																																																																																																																																							
1.2	2013/6/03	13	<p>3.2.1 Connector Type</p> <table border="1"> <thead> <tr> <th>TFT-LCD Connector</th> <th>Manufacturer</th> <th>Part Number</th> </tr> </thead> <tbody> <tr> <td></td> <td>STARCONN</td> <td>093G30-02001A04</td> </tr> <tr> <td></td> <td>STM</td> <td>MSCKT2407P30HB</td> </tr> </tbody> </table>	TFT-LCD Connector	Manufacturer	Part Number		STARCONN	093G30-02001A04		STM	MSCKT2407P30HB	<p>3.2.1 Connector Type</p> <table border="1"> <thead> <tr> <th>TFT-LCD Connector</th> <th>Manufacturer</th> <th>Part Number</th> </tr> </thead> <tbody> <tr> <td></td> <td>P-Two</td> <td>AL230F-ADG1D-P</td> </tr> <tr> <td></td> <td>STM</td> <td>MSCKT2407P30HB</td> </tr> </tbody> </table>	TFT-LCD Connector	Manufacturer	Part Number		P-Two	AL230F-ADG1D-P		STM	MSCKT2407P30HB																																																																																																																																																																																								
TFT-LCD Connector	Manufacturer	Part Number																																																																																																																																																																																																												
	STARCONN	093G30-02001A04																																																																																																																																																																																																												
	STM	MSCKT2407P30HB																																																																																																																																																																																																												
TFT-LCD Connector	Manufacturer	Part Number																																																																																																																																																																																																												
	P-Two	AL230F-ADG1D-P																																																																																																																																																																																																												
	STM	MSCKT2407P30HB																																																																																																																																																																																																												
2.2	2013/7/03	5	<p>Power Consumption</p> <p>25.67 (Typ.) LCD module : PDD (Typ.)=5.33 @ Black pattern, Fv=75Hz</p>	<p>Power Consumption</p> <p>25.84 (Typ.) LCD module : PDD (Typ.)=5.5 @ Black pattern, Fv=75Hz</p>																																																																																																																																																																																																										
		13	<p>3.2.2 Connector Pin Assignment</p> <table border="1"> <thead> <tr> <th>Pin Number</th> <th>Signal Name</th> <th>Description</th> </tr> </thead> <tbody> <tr><td>1</td><td>Rx01[0:4]</td><td>F-pull, Negative LVDS differential data input (0:4) (Data)</td></tr> <tr><td>2</td><td>Rx01[5:9]</td><td>F-pull, Positive LVDS differential data input (0:4) (Data)</td></tr> <tr><td>3</td><td>Rx01[10:14]</td><td>F-pull, Negative LVDS differential data input (5:9) (Data)</td></tr> <tr><td>4</td><td>Rx01[15:19]</td><td>F-pull, Positive LVDS differential data input (5:9) (Data)</td></tr> <tr><td>5</td><td>Rx01[20:24]</td><td>F-pull, Negative LVDS differential data input (10:14) (Data)</td></tr> <tr><td>6</td><td>Rx01[25:29]</td><td>F-pull, Positive LVDS differential data input (10:14) (Data)</td></tr> <tr><td>7</td><td>Rx01[30]</td><td>F-pull, LVDS differential clock input (Data)</td></tr> <tr><td>8</td><td>Rx01[31]</td><td>F-pull, Positive LVDS differential clock input (Data)</td></tr> <tr><td>9</td><td>Rx01[32]</td><td>F-pull, Negative LVDS differential clock input (Data)</td></tr> <tr><td>10</td><td>Rx01[33]</td><td>F-pull, Positive LVDS differential clock input (Data)</td></tr> <tr><td>11</td><td>Rx01[34:35]</td><td>F-pull, Negative LVDS differential data input (15:19) (Data)</td></tr> <tr><td>12</td><td>Rx01[36:37]</td><td>F-pull, Positive LVDS differential data input (15:19) (Data)</td></tr> <tr><td>13</td><td>Rx01[38:39]</td><td>F-pull, Negative LVDS differential data input (20:24) (Data)</td></tr> <tr><td>14</td><td>Rx01[40:41]</td><td>F-pull, Positive LVDS differential data input (20:24) (Data)</td></tr> <tr><td>15</td><td>Rx01[42]</td><td>F-pull, LVDS differential clock input (Data)</td></tr> <tr><td>16</td><td>Rx01[43]</td><td>F-pull, Negative LVDS differential clock input (Data)</td></tr> <tr><td>17</td><td>Rx01[44]</td><td>F-pull, Positive LVDS differential clock input (Data)</td></tr> <tr><td>18</td><td>Rx01[45]</td><td>F-pull, Negative LVDS differential clock input (Data)</td></tr> <tr><td>19</td><td>Rx01[46]</td><td>F-pull, Positive LVDS differential clock input (Data)</td></tr> <tr><td>20</td><td>Rx01[47]</td><td>F-pull, Negative LVDS differential data input (25:29) (Data)</td></tr> <tr><td>21</td><td>Rx01[48]</td><td>F-pull, Positive LVDS differential data input (25:29) (Data)</td></tr> <tr><td>22</td><td>Rx01[49]</td><td>F-pull, LVDS differential clock input (Data)</td></tr> <tr><td>23</td><td>Rx01[50]</td><td>F-pull, Negative LVDS differential clock input (Data)</td></tr> <tr><td>24</td><td>Rx01[51]</td><td>F-pull, Positive LVDS differential clock input (Data)</td></tr> <tr><td>25</td><td>Rx01[52]</td><td>F-pull, Negative LVDS differential clock input (Data)</td></tr> <tr><td>26</td><td>Rx01[53]</td><td>F-pull, Positive LVDS differential clock input (Data)</td></tr> <tr><td>27</td><td>Rx01[54]</td><td>F-pull, Negative LVDS differential data input (30:34) (Data)</td></tr> <tr><td>28</td><td>Rx01[55]</td><td>F-pull, Positive LVDS differential data input (30:34) (Data)</td></tr> <tr><td>29</td><td>Rx01[56]</td><td>F-pull, Negative LVDS differential data input (35:39) (Data)</td></tr> <tr><td>30</td><td>Rx01[57]</td><td>F-pull, Positive LVDS differential data input (35:39) (Data)</td></tr> <tr><td>31</td><td>Rx01[58]</td><td>F-pull, LVDS differential clock input (Data)</td></tr> <tr><td>32</td><td>Rx01[59]</td><td>F-pull, Negative LVDS differential clock input (Data)</td></tr> <tr><td>33</td><td>Rx01[60]</td><td>F-pull, Positive LVDS differential clock input (Data)</td></tr> <tr><td>34</td><td>Rx01[61]</td><td>F-pull, Negative LVDS differential clock input (Data)</td></tr> <tr><td>35</td><td>Rx01[62]</td><td>F-pull, Positive LVDS differential clock input (Data)</td></tr> </tbody> </table>	Pin Number	Signal Name	Description	1	Rx01[0:4]	F-pull, Negative LVDS differential data input (0:4) (Data)	2	Rx01[5:9]	F-pull, Positive LVDS differential data input (0:4) (Data)	3	Rx01[10:14]	F-pull, Negative LVDS differential data input (5:9) (Data)	4	Rx01[15:19]	F-pull, Positive LVDS differential data input (5:9) (Data)	5	Rx01[20:24]	F-pull, Negative LVDS differential data input (10:14) (Data)	6	Rx01[25:29]	F-pull, Positive LVDS differential data input (10:14) (Data)	7	Rx01[30]	F-pull, LVDS differential clock input (Data)	8	Rx01[31]	F-pull, Positive LVDS differential clock input (Data)	9	Rx01[32]	F-pull, Negative LVDS differential clock input (Data)	10	Rx01[33]	F-pull, Positive LVDS differential clock input (Data)	11	Rx01[34:35]	F-pull, Negative LVDS differential data input (15:19) (Data)	12	Rx01[36:37]	F-pull, Positive LVDS differential data input (15:19) (Data)	13	Rx01[38:39]	F-pull, Negative LVDS differential data input (20:24) (Data)	14	Rx01[40:41]	F-pull, Positive LVDS differential data input (20:24) (Data)	15	Rx01[42]	F-pull, LVDS differential clock input (Data)	16	Rx01[43]	F-pull, Negative LVDS differential clock input (Data)	17	Rx01[44]	F-pull, Positive LVDS differential clock input (Data)	18	Rx01[45]	F-pull, Negative LVDS differential clock input (Data)	19	Rx01[46]	F-pull, Positive LVDS differential clock input (Data)	20	Rx01[47]	F-pull, Negative LVDS differential data input (25:29) (Data)	21	Rx01[48]	F-pull, Positive LVDS differential data input (25:29) (Data)	22	Rx01[49]	F-pull, LVDS differential clock input (Data)	23	Rx01[50]	F-pull, Negative LVDS differential clock input (Data)	24	Rx01[51]	F-pull, Positive LVDS differential clock input (Data)	25	Rx01[52]	F-pull, Negative LVDS differential clock input (Data)	26	Rx01[53]	F-pull, Positive LVDS differential clock input (Data)	27	Rx01[54]	F-pull, Negative LVDS differential data input (30:34) (Data)	28	Rx01[55]	F-pull, Positive LVDS differential data input (30:34) (Data)	29	Rx01[56]	F-pull, Negative LVDS differential data input (35:39) (Data)	30	Rx01[57]	F-pull, Positive LVDS differential data input (35:39) (Data)	31	Rx01[58]	F-pull, LVDS differential clock input (Data)	32	Rx01[59]	F-pull, Negative LVDS differential clock input (Data)	33	Rx01[60]	F-pull, Positive LVDS differential clock input (Data)	34	Rx01[61]	F-pull, Negative LVDS differential clock input (Data)	35	Rx01[62]	F-pull, Positive LVDS differential clock input (Data)	<p>3.2.2 Connector Pin Assignment</p> <table border="1"> <thead> <tr> <th>Pin #</th> <th>Symbol</th> <th>Description</th> </tr> </thead> <tbody> <tr><td>1</td><td>Rx01[0]</td><td>Positive LVDS differential data input (0:4) (Data)</td></tr> <tr><td>2</td><td>Rx01[1]</td><td>Negative LVDS differential data input (0:4) (Data)</td></tr> <tr><td>3</td><td>Rx01[2]</td><td>Positive LVDS differential data input (5:9) (Data)</td></tr> <tr><td>4</td><td>Rx01[3]</td><td>Negative LVDS differential data input (5:9) (Data)</td></tr> <tr><td>5</td><td>Rx01[4]</td><td>Positive LVDS differential data input (10:14) (Data)</td></tr> <tr><td>6</td><td>Rx01[5]</td><td>Negative LVDS differential data input (10:14) (Data)</td></tr> <tr><td>7</td><td>Rx01[6]</td><td>LVDS differential clock input (Data)</td></tr> <tr><td>8</td><td>Rx01[7]</td><td>LVDS differential clock input (Data)</td></tr> <tr><td>9</td><td>Rx01[8]</td><td>LVDS differential clock input (Data)</td></tr> <tr><td>10</td><td>Rx01[9]</td><td>LVDS differential clock input (Data)</td></tr> <tr><td>11</td><td>Rx01[10]</td><td>Negative LVDS differential data input (15:19) (Data)</td></tr> <tr><td>12</td><td>Rx01[11]</td><td>Positive LVDS differential data input (15:19) (Data)</td></tr> <tr><td>13</td><td>Rx01[12]</td><td>Negative LVDS differential data input (20:24) (Data)</td></tr> <tr><td>14</td><td>Rx01[13]</td><td>Positive LVDS differential data input (20:24) (Data)</td></tr> <tr><td>15</td><td>Rx01[14]</td><td>LVDS differential clock input (Data)</td></tr> <tr><td>16</td><td>Rx01[15]</td><td>LVDS differential clock input (Data)</td></tr> <tr><td>17</td><td>Rx01[16]</td><td>Negative LVDS differential data input (25:29) (Data)</td></tr> <tr><td>18</td><td>Rx01[17]</td><td>Positive LVDS differential data input (25:29) (Data)</td></tr> <tr><td>19</td><td>Rx01[18]</td><td>Negative LVDS differential data input (30:34) (Data)</td></tr> <tr><td>20</td><td>Rx01[19]</td><td>Positive LVDS differential data input (30:34) (Data)</td></tr> <tr><td>21</td><td>Rx01[20]</td><td>LVDS differential clock input (Data)</td></tr> <tr><td>22</td><td>Rx01[21]</td><td>LVDS differential clock input (Data)</td></tr> <tr><td>23</td><td>Rx01[22]</td><td>LVDS differential clock input (Data)</td></tr> <tr><td>24</td><td>Rx01[23]</td><td>LVDS differential clock input (Data)</td></tr> <tr><td>25</td><td>Rx01[24]</td><td>Negative LVDS differential data input (35:39) (Data)</td></tr> <tr><td>26</td><td>Rx01[25]</td><td>Positive LVDS differential data input (35:39) (Data)</td></tr> <tr><td>27</td><td>Rx01[26]</td><td>Negative LVDS differential data input (40:44) (Data)</td></tr> <tr><td>28</td><td>Rx01[27]</td><td>Positive LVDS differential data input (40:44) (Data)</td></tr> <tr><td>29</td><td>Rx01[28]</td><td>Negative LVDS differential data input (45:49) (Data)</td></tr> <tr><td>30</td><td>Rx01[29]</td><td>Positive LVDS differential data input (45:49) (Data)</td></tr> </tbody> </table>	Pin #	Symbol	Description	1	Rx01[0]	Positive LVDS differential data input (0:4) (Data)	2	Rx01[1]	Negative LVDS differential data input (0:4) (Data)	3	Rx01[2]	Positive LVDS differential data input (5:9) (Data)	4	Rx01[3]	Negative LVDS differential data input (5:9) (Data)	5	Rx01[4]	Positive LVDS differential data input (10:14) (Data)	6	Rx01[5]	Negative LVDS differential data input (10:14) (Data)	7	Rx01[6]	LVDS differential clock input (Data)	8	Rx01[7]	LVDS differential clock input (Data)	9	Rx01[8]	LVDS differential clock input (Data)	10	Rx01[9]	LVDS differential clock input (Data)	11	Rx01[10]	Negative LVDS differential data input (15:19) (Data)	12	Rx01[11]	Positive LVDS differential data input (15:19) (Data)	13	Rx01[12]	Negative LVDS differential data input (20:24) (Data)	14	Rx01[13]	Positive LVDS differential data input (20:24) (Data)	15	Rx01[14]	LVDS differential clock input (Data)	16	Rx01[15]	LVDS differential clock input (Data)	17	Rx01[16]	Negative LVDS differential data input (25:29) (Data)	18	Rx01[17]	Positive LVDS differential data input (25:29) (Data)	19	Rx01[18]	Negative LVDS differential data input (30:34) (Data)	20	Rx01[19]	Positive LVDS differential data input (30:34) (Data)	21	Rx01[20]	LVDS differential clock input (Data)	22	Rx01[21]	LVDS differential clock input (Data)	23	Rx01[22]	LVDS differential clock input (Data)	24	Rx01[23]	LVDS differential clock input (Data)	25	Rx01[24]	Negative LVDS differential data input (35:39) (Data)	26	Rx01[25]	Positive LVDS differential data input (35:39) (Data)	27	Rx01[26]	Negative LVDS differential data input (40:44) (Data)	28	Rx01[27]	Positive LVDS differential data input (40:44) (Data)	29	Rx01[28]	Negative LVDS differential data input (45:49) (Data)	30	Rx01[29]	Positive LVDS differential data input (45:49) (Data)	
Pin Number	Signal Name	Description																																																																																																																																																																																																												
1	Rx01[0:4]	F-pull, Negative LVDS differential data input (0:4) (Data)																																																																																																																																																																																																												
2	Rx01[5:9]	F-pull, Positive LVDS differential data input (0:4) (Data)																																																																																																																																																																																																												
3	Rx01[10:14]	F-pull, Negative LVDS differential data input (5:9) (Data)																																																																																																																																																																																																												
4	Rx01[15:19]	F-pull, Positive LVDS differential data input (5:9) (Data)																																																																																																																																																																																																												
5	Rx01[20:24]	F-pull, Negative LVDS differential data input (10:14) (Data)																																																																																																																																																																																																												
6	Rx01[25:29]	F-pull, Positive LVDS differential data input (10:14) (Data)																																																																																																																																																																																																												
7	Rx01[30]	F-pull, LVDS differential clock input (Data)																																																																																																																																																																																																												
8	Rx01[31]	F-pull, Positive LVDS differential clock input (Data)																																																																																																																																																																																																												
9	Rx01[32]	F-pull, Negative LVDS differential clock input (Data)																																																																																																																																																																																																												
10	Rx01[33]	F-pull, Positive LVDS differential clock input (Data)																																																																																																																																																																																																												
11	Rx01[34:35]	F-pull, Negative LVDS differential data input (15:19) (Data)																																																																																																																																																																																																												
12	Rx01[36:37]	F-pull, Positive LVDS differential data input (15:19) (Data)																																																																																																																																																																																																												
13	Rx01[38:39]	F-pull, Negative LVDS differential data input (20:24) (Data)																																																																																																																																																																																																												
14	Rx01[40:41]	F-pull, Positive LVDS differential data input (20:24) (Data)																																																																																																																																																																																																												
15	Rx01[42]	F-pull, LVDS differential clock input (Data)																																																																																																																																																																																																												
16	Rx01[43]	F-pull, Negative LVDS differential clock input (Data)																																																																																																																																																																																																												
17	Rx01[44]	F-pull, Positive LVDS differential clock input (Data)																																																																																																																																																																																																												
18	Rx01[45]	F-pull, Negative LVDS differential clock input (Data)																																																																																																																																																																																																												
19	Rx01[46]	F-pull, Positive LVDS differential clock input (Data)																																																																																																																																																																																																												
20	Rx01[47]	F-pull, Negative LVDS differential data input (25:29) (Data)																																																																																																																																																																																																												
21	Rx01[48]	F-pull, Positive LVDS differential data input (25:29) (Data)																																																																																																																																																																																																												
22	Rx01[49]	F-pull, LVDS differential clock input (Data)																																																																																																																																																																																																												
23	Rx01[50]	F-pull, Negative LVDS differential clock input (Data)																																																																																																																																																																																																												
24	Rx01[51]	F-pull, Positive LVDS differential clock input (Data)																																																																																																																																																																																																												
25	Rx01[52]	F-pull, Negative LVDS differential clock input (Data)																																																																																																																																																																																																												
26	Rx01[53]	F-pull, Positive LVDS differential clock input (Data)																																																																																																																																																																																																												
27	Rx01[54]	F-pull, Negative LVDS differential data input (30:34) (Data)																																																																																																																																																																																																												
28	Rx01[55]	F-pull, Positive LVDS differential data input (30:34) (Data)																																																																																																																																																																																																												
29	Rx01[56]	F-pull, Negative LVDS differential data input (35:39) (Data)																																																																																																																																																																																																												
30	Rx01[57]	F-pull, Positive LVDS differential data input (35:39) (Data)																																																																																																																																																																																																												
31	Rx01[58]	F-pull, LVDS differential clock input (Data)																																																																																																																																																																																																												
32	Rx01[59]	F-pull, Negative LVDS differential clock input (Data)																																																																																																																																																																																																												
33	Rx01[60]	F-pull, Positive LVDS differential clock input (Data)																																																																																																																																																																																																												
34	Rx01[61]	F-pull, Negative LVDS differential clock input (Data)																																																																																																																																																																																																												
35	Rx01[62]	F-pull, Positive LVDS differential clock input (Data)																																																																																																																																																																																																												
Pin #	Symbol	Description																																																																																																																																																																																																												
1	Rx01[0]	Positive LVDS differential data input (0:4) (Data)																																																																																																																																																																																																												
2	Rx01[1]	Negative LVDS differential data input (0:4) (Data)																																																																																																																																																																																																												
3	Rx01[2]	Positive LVDS differential data input (5:9) (Data)																																																																																																																																																																																																												
4	Rx01[3]	Negative LVDS differential data input (5:9) (Data)																																																																																																																																																																																																												
5	Rx01[4]	Positive LVDS differential data input (10:14) (Data)																																																																																																																																																																																																												
6	Rx01[5]	Negative LVDS differential data input (10:14) (Data)																																																																																																																																																																																																												
7	Rx01[6]	LVDS differential clock input (Data)																																																																																																																																																																																																												
8	Rx01[7]	LVDS differential clock input (Data)																																																																																																																																																																																																												
9	Rx01[8]	LVDS differential clock input (Data)																																																																																																																																																																																																												
10	Rx01[9]	LVDS differential clock input (Data)																																																																																																																																																																																																												
11	Rx01[10]	Negative LVDS differential data input (15:19) (Data)																																																																																																																																																																																																												
12	Rx01[11]	Positive LVDS differential data input (15:19) (Data)																																																																																																																																																																																																												
13	Rx01[12]	Negative LVDS differential data input (20:24) (Data)																																																																																																																																																																																																												
14	Rx01[13]	Positive LVDS differential data input (20:24) (Data)																																																																																																																																																																																																												
15	Rx01[14]	LVDS differential clock input (Data)																																																																																																																																																																																																												
16	Rx01[15]	LVDS differential clock input (Data)																																																																																																																																																																																																												
17	Rx01[16]	Negative LVDS differential data input (25:29) (Data)																																																																																																																																																																																																												
18	Rx01[17]	Positive LVDS differential data input (25:29) (Data)																																																																																																																																																																																																												
19	Rx01[18]	Negative LVDS differential data input (30:34) (Data)																																																																																																																																																																																																												
20	Rx01[19]	Positive LVDS differential data input (30:34) (Data)																																																																																																																																																																																																												
21	Rx01[20]	LVDS differential clock input (Data)																																																																																																																																																																																																												
22	Rx01[21]	LVDS differential clock input (Data)																																																																																																																																																																																																												
23	Rx01[22]	LVDS differential clock input (Data)																																																																																																																																																																																																												
24	Rx01[23]	LVDS differential clock input (Data)																																																																																																																																																																																																												
25	Rx01[24]	Negative LVDS differential data input (35:39) (Data)																																																																																																																																																																																																												
26	Rx01[25]	Positive LVDS differential data input (35:39) (Data)																																																																																																																																																																																																												
27	Rx01[26]	Negative LVDS differential data input (40:44) (Data)																																																																																																																																																																																																												
28	Rx01[27]	Positive LVDS differential data input (40:44) (Data)																																																																																																																																																																																																												
29	Rx01[28]	Negative LVDS differential data input (45:49) (Data)																																																																																																																																																																																																												
30	Rx01[29]	Positive LVDS differential data input (45:49) (Data)																																																																																																																																																																																																												
		15	<p>3.3.2 Recommended Operating Condition</p> <table border="1"> <thead> <tr> <th>Symbol</th> <th>Description</th> <th>Min.</th> <th>Typ.</th> <th>Max.</th> <th>Unit</th> <th>Remark</th> </tr> </thead> <tbody> <tr> <td>VDD</td> <td>Power supply input voltage</td> <td>4.5</td> <td>5.0</td> <td>5.5</td> <td>[V_{DC}]</td> <td></td> </tr> <tr> <td>I_{DD}</td> <td>Power supply bus current (PDD)</td> <td>1.7</td> <td>1.4</td> <td>1.3</td> <td>[A]</td> <td>VDD=5.0V, Black Pattern, T=70°C</td> </tr> <tr> <td>PDD</td> <td>Power supply bus current (PDD)</td> <td>1.4</td> <td>1.7</td> <td>1.3</td> <td>[A]</td> <td>VDD=5.0V, Black Pattern, Fv=75Hz</td> </tr> <tr> <td>PDD</td> <td>Power supply bus current (PDD)</td> <td>1.7</td> <td>0.5</td> <td>0.5</td> <td>[Watt]</td> <td>VDD=5.0V, Black Pattern, T=60°C</td> </tr> <tr> <td>I_{DD}</td> <td>Power supply bus current (PDD)</td> <td>3.0</td> <td>0.0</td> <td>0.0</td> <td>[A]</td> <td>VDD=5.0V, Black Pattern, Fv=75Hz</td> </tr> <tr> <td>I_{DD}</td> <td>Power supply bus current (PDD)</td> <td>3.0</td> <td>0.0</td> <td>0.0</td> <td>[A]</td> <td>Note 3-1</td> </tr> <tr> <td>V_{DD}</td> <td>Power supply input voltage</td> <td>4.5</td> <td>5.0</td> <td>5.5</td> <td>[V_{DC}]</td> <td></td> </tr> <tr> <td>I_{DD}</td> <td>Power supply bus current (PDD)</td> <td>1.7</td> <td>1.4</td> <td>1.3</td> <td>[A]</td> <td>VDD=5.0V, Black Pattern, T=70°C</td> </tr> <tr> <td>PDD</td> <td>Power supply bus current (PDD)</td> <td>1.4</td> <td>1.7</td> <td>1.3</td> <td>[A]</td> <td>VDD=5.0V, Black Pattern, Fv=75Hz</td> </tr> <tr> <td>PDD</td> <td>Power supply bus current (PDD)</td> <td>1.7</td> <td>0.5</td> <td>0.5</td> <td>[Watt]</td> <td>VDD=5.0V, Black Pattern, T=60°C</td> </tr> <tr> <td>I_{DD}</td> <td>Power supply bus current (PDD)</td> <td>3.0</td> <td>0.0</td> <td>0.0</td> <td>[A]</td> <td>VDD=5.0V, Black Pattern, Fv=75Hz</td> </tr> <tr> <td>I_{DD}</td> <td>Power supply bus current (PDD)</td> <td>3.0</td> <td>0.0</td> <td>0.0</td> <td>[A]</td> <td>Note 3-1</td> </tr> </tbody> </table>	Symbol	Description	Min.	Typ.	Max.	Unit	Remark	VDD	Power supply input voltage	4.5	5.0	5.5	[V _{DC}]		I _{DD}	Power supply bus current (PDD)	1.7	1.4	1.3	[A]	VDD=5.0V, Black Pattern, T=70°C	PDD	Power supply bus current (PDD)	1.4	1.7	1.3	[A]	VDD=5.0V, Black Pattern, Fv=75Hz	PDD	Power supply bus current (PDD)	1.7	0.5	0.5	[Watt]	VDD=5.0V, Black Pattern, T=60°C	I _{DD}	Power supply bus current (PDD)	3.0	0.0	0.0	[A]	VDD=5.0V, Black Pattern, Fv=75Hz	I _{DD}	Power supply bus current (PDD)	3.0	0.0	0.0	[A]	Note 3-1	V _{DD}	Power supply input voltage	4.5	5.0	5.5	[V _{DC}]		I _{DD}	Power supply bus current (PDD)	1.7	1.4	1.3	[A]	VDD=5.0V, Black Pattern, T=70°C	PDD	Power supply bus current (PDD)	1.4	1.7	1.3	[A]	VDD=5.0V, Black Pattern, Fv=75Hz	PDD	Power supply bus current (PDD)	1.7	0.5	0.5	[Watt]	VDD=5.0V, Black Pattern, T=60°C	I _{DD}	Power supply bus current (PDD)	3.0	0.0	0.0	[A]	VDD=5.0V, Black Pattern, Fv=75Hz	I _{DD}	Power supply bus current (PDD)	3.0	0.0	0.0	[A]	Note 3-1	<p>3.3.2 Recommended Operating Condition</p> <table border="1"> <thead> <tr> <th>Symbol</th> <th>Description</th> <th>Min.</th> <th>Typ.</th> <th>Max.</th> <th>Unit</th> <th>Remark</th> </tr> </thead> <tbody> <tr> <td>VDD</td> <td>Power supply input voltage</td> <td>4.5</td> <td>5.0</td> <td>5.5</td> <td>[V_{DC}]</td> <td></td> </tr> <tr> <td>I_{DD}</td> <td>Power supply bus current (PDD)</td> <td>1.7</td> <td>1.4</td> <td>1.3</td> <td>[A]</td> <td>VDD=5.0V, Black Pattern, T=70°C</td> </tr> <tr> <td>PDD</td> <td>Power supply bus current (PDD)</td> <td>1.4</td> <td>1.7</td> <td>1.3</td> <td>[A]</td> <td>VDD=5.0V, Black Pattern, Fv=75Hz</td> </tr> <tr> <td>PDD</td> <td>Power supply bus current (PDD)</td> <td>1.7</td> <td>0.5</td> <td>0.5</td> <td>[Watt]</td> <td>VDD=5.0V, Black Pattern, T=60°C</td> </tr> <tr> <td>I_{DD}</td> <td>Power supply bus current (PDD)</td> <td>3.0</td> <td>0.0</td> <td>0.0</td> <td>[A]</td> <td>VDD=5.0V, Black Pattern, Fv=75Hz</td> </tr> <tr> <td>I_{DD}</td> <td>Power supply bus current (PDD)</td> <td>3.0</td> <td>0.0</td> <td>0.0</td> <td>[A]</td> <td>Note 3-1</td> </tr> </tbody> </table>	Symbol	Description	Min.	Typ.	Max.	Unit	Remark	VDD	Power supply input voltage	4.5	5.0	5.5	[V _{DC}]		I _{DD}	Power supply bus current (PDD)	1.7	1.4	1.3	[A]	VDD=5.0V, Black Pattern, T=70°C	PDD	Power supply bus current (PDD)	1.4	1.7	1.3	[A]	VDD=5.0V, Black Pattern, Fv=75Hz	PDD	Power supply bus current (PDD)	1.7	0.5	0.5	[Watt]	VDD=5.0V, Black Pattern, T=60°C	I _{DD}	Power supply bus current (PDD)	3.0	0.0	0.0	[A]	VDD=5.0V, Black Pattern, Fv=75Hz	I _{DD}	Power supply bus current (PDD)	3.0	0.0	0.0	[A]	Note 3-1																																																														
Symbol	Description	Min.	Typ.	Max.	Unit	Remark																																																																																																																																																																																																								
VDD	Power supply input voltage	4.5	5.0	5.5	[V _{DC}]																																																																																																																																																																																																									
I _{DD}	Power supply bus current (PDD)	1.7	1.4	1.3	[A]	VDD=5.0V, Black Pattern, T=70°C																																																																																																																																																																																																								
PDD	Power supply bus current (PDD)	1.4	1.7	1.3	[A]	VDD=5.0V, Black Pattern, Fv=75Hz																																																																																																																																																																																																								
PDD	Power supply bus current (PDD)	1.7	0.5	0.5	[Watt]	VDD=5.0V, Black Pattern, T=60°C																																																																																																																																																																																																								
I _{DD}	Power supply bus current (PDD)	3.0	0.0	0.0	[A]	VDD=5.0V, Black Pattern, Fv=75Hz																																																																																																																																																																																																								
I _{DD}	Power supply bus current (PDD)	3.0	0.0	0.0	[A]	Note 3-1																																																																																																																																																																																																								
V _{DD}	Power supply input voltage	4.5	5.0	5.5	[V _{DC}]																																																																																																																																																																																																									
I _{DD}	Power supply bus current (PDD)	1.7	1.4	1.3	[A]	VDD=5.0V, Black Pattern, T=70°C																																																																																																																																																																																																								
PDD	Power supply bus current (PDD)	1.4	1.7	1.3	[A]	VDD=5.0V, Black Pattern, Fv=75Hz																																																																																																																																																																																																								
PDD	Power supply bus current (PDD)	1.7	0.5	0.5	[Watt]	VDD=5.0V, Black Pattern, T=60°C																																																																																																																																																																																																								
I _{DD}	Power supply bus current (PDD)	3.0	0.0	0.0	[A]	VDD=5.0V, Black Pattern, Fv=75Hz																																																																																																																																																																																																								
I _{DD}	Power supply bus current (PDD)	3.0	0.0	0.0	[A]	Note 3-1																																																																																																																																																																																																								
Symbol	Description	Min.	Typ.	Max.	Unit	Remark																																																																																																																																																																																																								
VDD	Power supply input voltage	4.5	5.0	5.5	[V _{DC}]																																																																																																																																																																																																									
I _{DD}	Power supply bus current (PDD)	1.7	1.4	1.3	[A]	VDD=5.0V, Black Pattern, T=70°C																																																																																																																																																																																																								
PDD	Power supply bus current (PDD)	1.4	1.7	1.3	[A]	VDD=5.0V, Black Pattern, Fv=75Hz																																																																																																																																																																																																								
PDD	Power supply bus current (PDD)	1.7	0.5	0.5	[Watt]	VDD=5.0V, Black Pattern, T=60°C																																																																																																																																																																																																								
I _{DD}	Power supply bus current (PDD)	3.0	0.0	0.0	[A]	VDD=5.0V, Black Pattern, Fv=75Hz																																																																																																																																																																																																								
I _{DD}	Power supply bus current (PDD)	3.0	0.0	0.0	[A]	Note 3-1																																																																																																																																																																																																								
		27	<p>4.3.1 Absolute Maximum Rating</p> <p>LED String Current Max.300 mA</p>	<p>4.3.1 Absolute Maximum Rating</p> <p>LED String Current Max.210 mA</p>																																																																																																																																																																																																										
		27	<p>4.3.2 Recommended Operating Condition</p> <p>LED Light Bar Power Consumption Max. 24.7 Watt</p>	<p>4.3.2 Recommended Operating Condition</p> <p>LED Light Bar Power Consumption Max. 22.5 Watt</p>																																																																																																																																																																																																										
		28		Add Note 4-5 & Note 4-6																																																																																																																																																																																																										
2.3	2013/7/26	29	Drop Test Height: 60 cm, package test	Drop Test Height: 45.7 cm, package test																																																																																																																																																																																																										

1 Handling Precautions

- 1) Since front polarizer is easily damaged, pay attention not to scratch it.
- 2) Be sure to turn off power supply when inserting or disconnecting from input connector.
- 3) Wipe off water drop immediately. Long contact with water may cause discoloration or spots.
- 4) When the panel surface is soiled, wipe it with absorbent cotton or other soft cloth.
- 5) Since the panel is made of glass, it may break or crack if dropped or bumped on hard surface.
- 6) Since CMOS LSI is used in this module, take care of static electricity and insure human earth when handling.
- 7) Do not open or modify the Module Assembly.
- 8) Do not press the reflector sheet at the back of the module to any directions.
- 9) In case a TFT-LCD Module has to be put back into the packing container slot after once it was taken out from the container, do not press the center of the LED lightbar edge. Otherwise the TFT-LCD Module may be damaged.
- 10) Insert or pull out the interface connector, be sure not to rotate nor tilt it of the TFT-LCD Module.
- 11) Do not twist nor bend the TFT -LCD Module even momentary. It should be taken into consideration that no bending/twisting forces are applied to the TFT-LCD Module from outside. Otherwise the TFT-LCD Module may be damaged.
- 12) Please avoid touching COF position while you are doing mechanical design.
- 13) When storing modules as spares for a long time, the following precaution is necessary:
Store them in a dark place. Do not expose the module to sunlight or fluorescent light. Keep the temperature between 5°C and 35°C at normal humidity.

2 General Description

This specification applies to the 27 inch wide Color a-Si TFT-LCD Module M270HTN01.1. The display supports the Full HD - 1920(H) x 1080(V) screen format and 16.7M colors (RGB 6-bits + Hi-FRC data). The input interface is tow channel LVDS and this module doesn't contain an driver board for backlight.

2.1 Display Characteristics

The following items are characteristics summary on the table under 25°C condition:

ITEMS	Unit	SPECIFICATIONS
Screen Diagonal	[mm]	685.65(27")
Active Area	[mm]	597.6 (H) x 336.15 (V)
Pixels H x V	-	1920(x3) x 1080
Pixel Pitch	[um]	311.25 (per one triad) x311.25
Pixel Arrangement	-	R.G.B. Vertical Stripe
Display Mode	-	TN Mode, Normally White
White Luminance (Center)	[cd/m ²]	300 (Typ.)
Contrast Ratio	-	1000:1 (Typ.)
Response Time	[msec]	5ms (Typ., on/off)
Power Consumption (LCD Module + Backligh unit)	[Watt]	25.84 (Typ.) LCD module : PDD (Typ.)=5.5 @ Black pattern, Fv=75Hz Backlight unit : P _{BLU} (Typ.) =20.34 @ Is=120mA
Weight	[Grams]	2860
Outline Dimension	[mm]	630 (W) x 368.2 (H) x 14.1(D)
Electrical Interface	-	Two channel LVDS
Support Color	-	16.7M colors (RGB 6-bit + Hi_FRC)
Surface Treatment	-	Anti-Glare, 3H
Temperature Range		
Operating	[°C]	0 to +50
Storage (Shipping)	[°C]	-20 to +60
RoHS Compliance	-	RoHS Compliance
TCO Compliance	-	TCO 6.0 Compliance

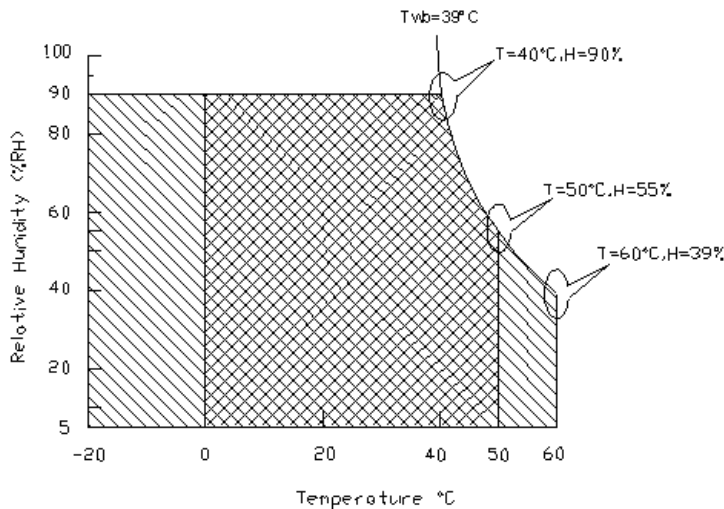
2.2 Absolute Maximum Rating of Environment

Permanent damage may occur if exceeding the following maximum rating.

Symbol	Description	Min.	Max.	Unit	Remark
TOP	Operating Temperature	0	+50	[°C]	Note 2-1
TGS	Glass surface temperature (operation)	0	+65	[°C]	Note 2-1 Function judged only
HOP	Operation Humidity	5	90	[%RH]	Note 2-1
TST	Storage Temperature	-20	+60	[°C]	
HST	Storage Humidity	5	90	[%RH]	

Note 2-1: Temperature and relative humidity range are shown as the below figure.

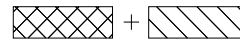
1. 90% RH Max ($T_a \leq 39^\circ\text{C}$)
2. Max wet-bulb temperature at 39°C or less. ($T_a \leq 39^\circ\text{C}$)
3. No condensation



Operating Range



Storage Range



2.3 Optical Characteristics

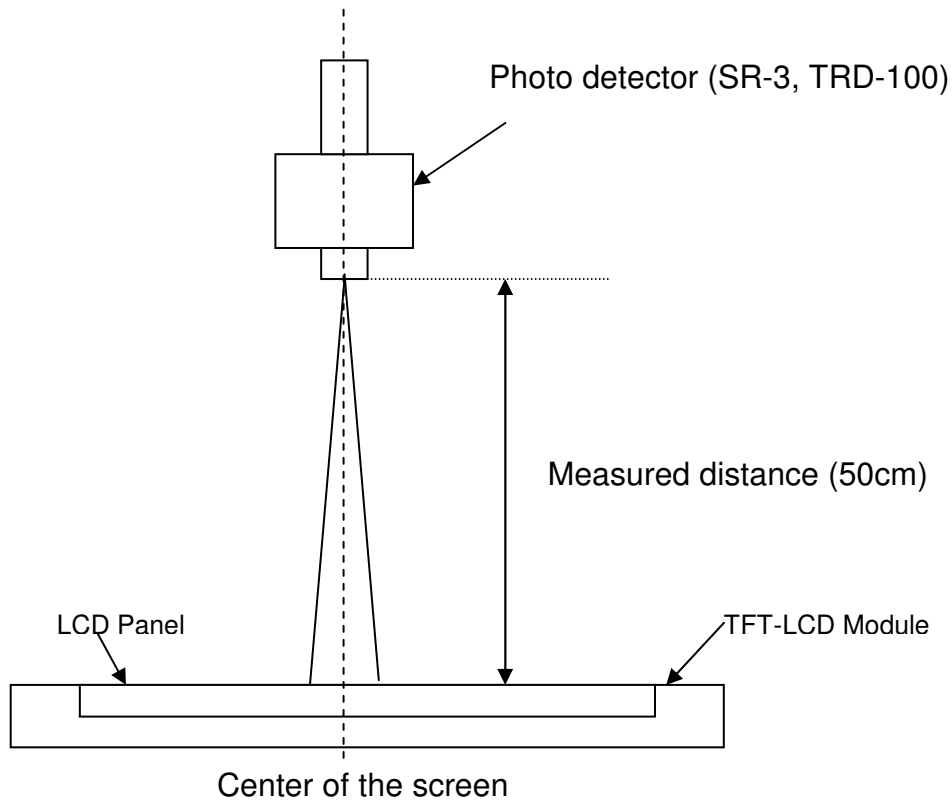
The optical characteristics are measured on the following test condition.

Test Condition:

1. Equipment setup: Please refer to **Note 2-2**.
2. Panel Lighting time: 30 minutes
3. VDD=5.0V, Fv=75Hz, Is=120mA, Ta=25 °C

Symbol	Description		Min.	Typ.	Max.	Unit	Remark
L _w	White Luminance (Center of screen)		240	300	-	[cd/m ²]	Note 2-2 By SR-3
L _{uni}	Luminance Uniformity (9 points)		75	80	-	[%]	Note 2-3 By SR-3
CR	Contrast Ratio (Center of screen)		600	1000	-	-	Note 2-4 By SR-3
θ _R	Horizontal Viewing Angle (CR=10)	Right	75	85	-	[degree]	Note 2-5 By SR-3
θ _L		Left	75	85	-		
Φ _H	Vertical Viewing Angle (CR=10)	Up	70	80	-		
Φ _L		Down	70	80	-		
θ _R	Horizontal Viewing Angle (CR=5)	Right	75	88	-		
θ _L		Left	75	88	-		
Φ _H	Vertical Viewing Angle (CR=5)	Up	70	85	-		
Φ _L		Down	70	85	-		
T _R	Response Time	Rising Time	-	3.8	5.5	[msec]	Note 2-6 By TRD-100
T _F		Falling Time	-	1.2	2.5		
-		Rising + Falling	-	5	8		
R _x	Color Coordinates (CIE 1931)	Red x	0.617	0.647	0.677	-	By SR-3
R _y		Red y	0.312	0.342	0.372		
G _x		Green x	0.288	0.318	0.348		
G _y		Green y	0.601	0.631	0.661		
B _x		Blue x	0.120	0.150	0.180		
B _y		Blue y	0.020	0.050	0.080		
W _x		White x	0.283	0.313	0.343		
W _y		White y	0.299	0.329	0.359		
CT	Crosstalk		-	-	1.5	[%]	Note 2-7 By SR-3
F _{dB}	Flicker (Center of screen)		-	-	-20	[dB]	Note 2-8 By SR-3

Note 2-2: Equipment setup :

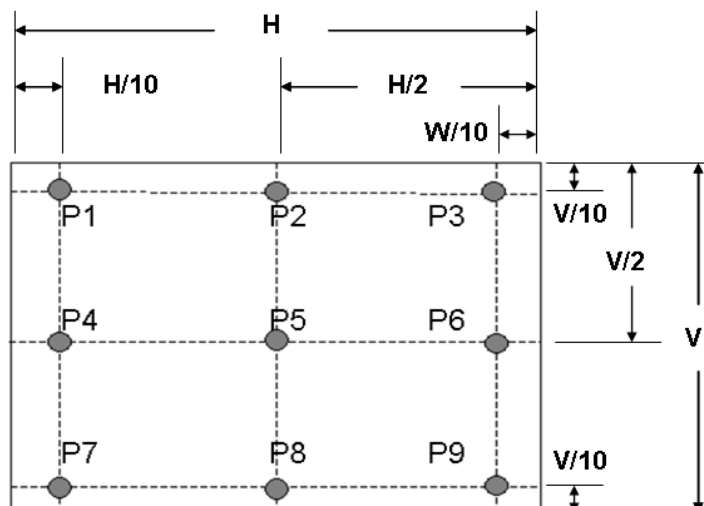


Note 2-3: Luminance Uniformity Measurement

Definition:

$$\text{Luminance Uniformity} = \frac{\text{Minimum Luminance of 9 Points (P1 ~ P9)}}{\text{Maximum Luminance of 9 Points (P1 ~ P9)}}$$

a. Test pattern: White Pattern



Note 2-4: Contrast Ratio Measurement

Definition:

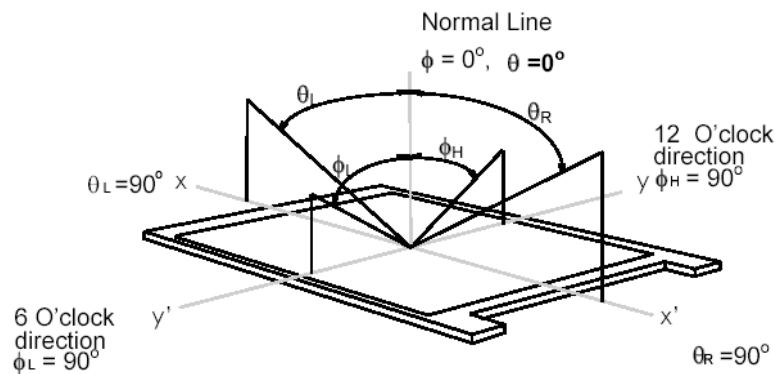
$$\text{Contrast Ratio} = \frac{\text{Luminance of White pattern}}{\text{Luminance of Black pattern}}$$

- a. Measured position: Center of screen (P5) & perpendicular to the screen ($\theta = \Phi = 0^\circ$)

Note 2-5: Viewing angle measurement

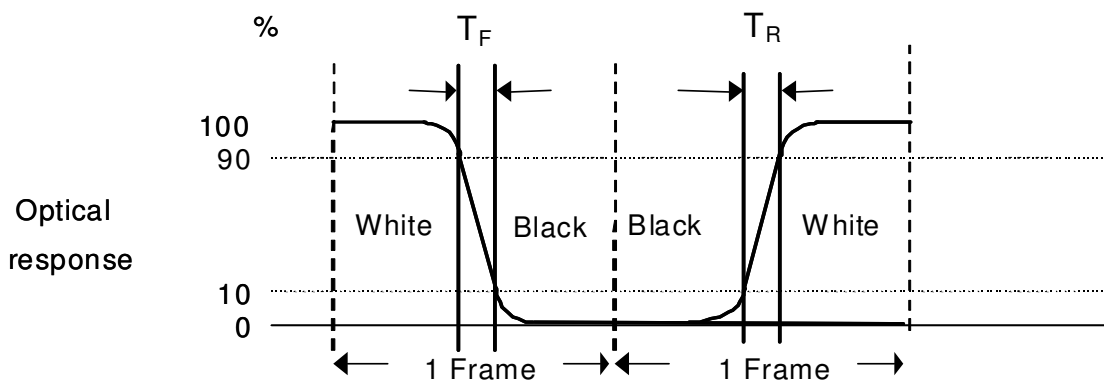
Definition: The angle at which the contrast ratio is greater than 10 & 5 .

- a. Horizontal view angle: Divide to left & right (θ_L & θ_R)
Vertical view angle: Divide to up & down (Φ_H & Φ_L)



Note 2-6: Response time measurement

The output signals of photo detector are measured when the input signals are changed from “Black” to “White” (rising time, T_R), and from “White” to “Black” (falling time, T_F), respectively. The response time is interval between the 10% and 90% of optical response. (*Black & White color definition: Please refer section 3.4.3*)



Note 2-7: Crosstalk measurement

Definition:

$$CT = \text{Max. } (CT_H, CT_V);$$

Where

a. Maximum Horizontal Crosstalk :

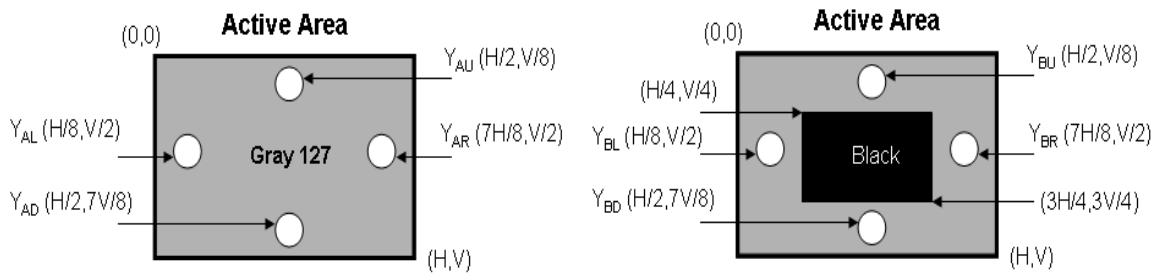
$$CT_H = \text{Max. } (| Y_{BL} - Y_{AL} | / Y_{AL} \times 100 \%, | Y_{BR} - Y_{AR} | / Y_{AR} \times 100 \%);$$

Maximum Vertical Crosstalk:

$$CT_V = \text{Max. } (| Y_{BU} - Y_{AU} | / Y_{AU} \times 100 \%, | Y_{BD} - Y_{AD} | / Y_{AD} \times 100 \%);$$

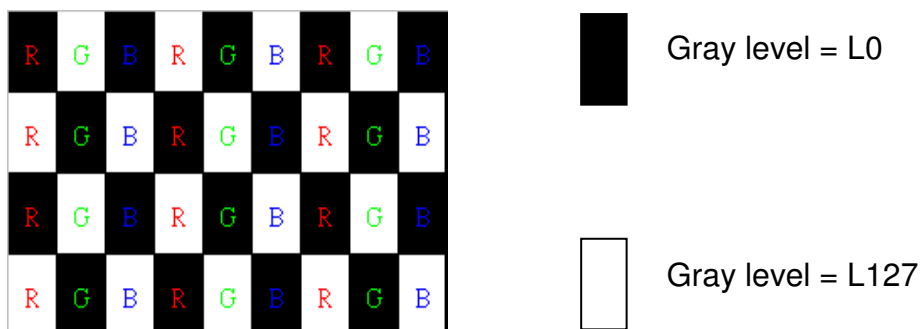
b. $Y_{AU}, Y_{AD}, Y_{AL}, Y_{AR}$ = Luminance of measured location without Black pattern

$Y_{BU}, Y_{BD}, Y_{BL}, Y_{BR}$ = Luminance of measured location with Black pattern



Note 2-8: Flicker measurement

a. Test pattern: It is listed as following.



R: Red, G: Green, B:Blue

b. Measured position: Center of screen (P5) & perpendicular to the screen ($\theta = \Phi = 0^\circ$)

2.4 Mechanical Characteristics

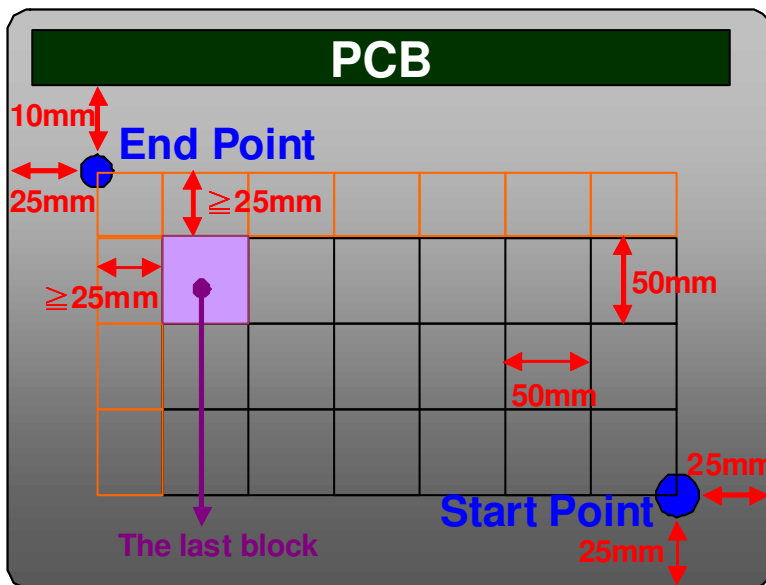
Symbol	Description	Min.	Max.	Unit	Remark
P _{bc}	Backside Compression	2.5	-	[Kgf]	Note 2-9

Note 2-9: Test Method:

The point is at a distance from right-downside 25mm x 25mm defined as the Start Point of Measure Points, and the point is at a distance 25mm from left-side & around 10mm from PCB defined as the End Point.

Align 50mm x 50mm block from Start Point on the Bezel Back, and the corners of each block are Measure Points.

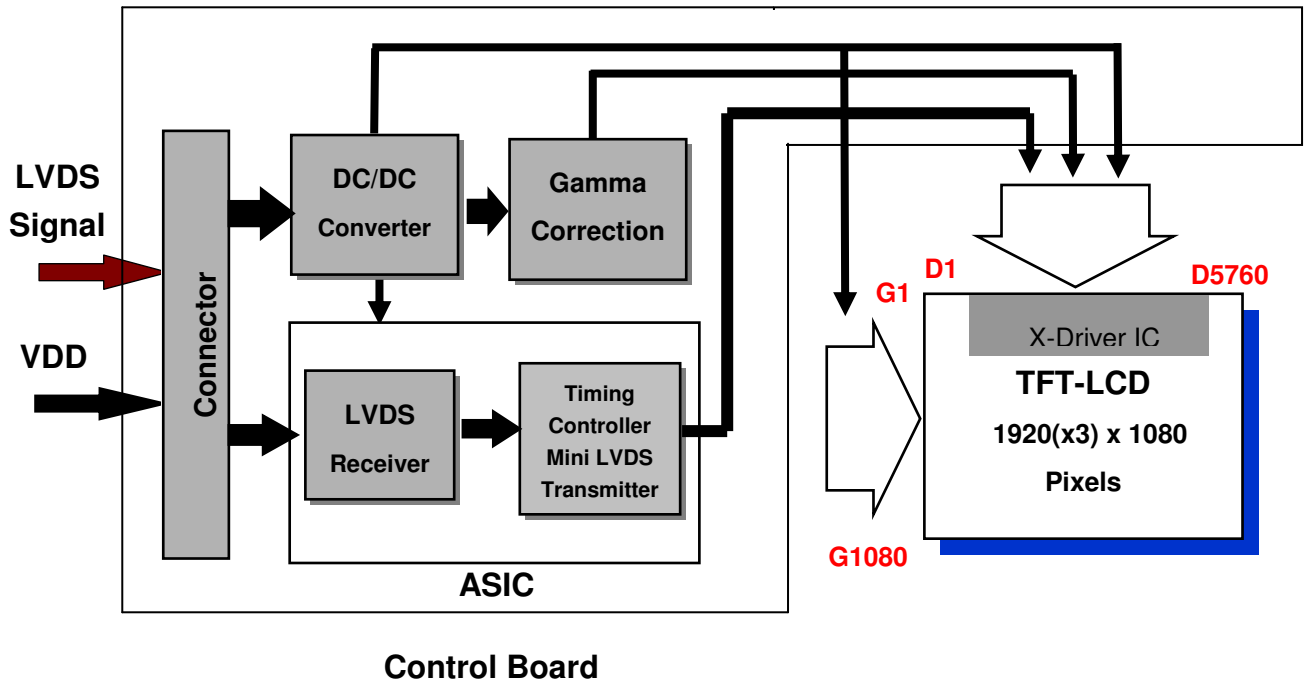
If the distance from the last block to each side of the End Point $\geq 25\text{mm}$, add other blocks to make sure that most area of Bezel Back can be measured.



3 TFT-LCD Module

3.1 Block Diagram

The following shows the block diagram of the 27 inch Color TFT-LCD Module.



3.2 Interface Connection

3.2.1 Connector Type

TFT-LCD Connector	Manufacturer	P-Two	STM
	Part Number	AL230F-A0G1D-P	MSCKT2407P30HB
Mating Connector	Manufacturer	JAE	
	Part Number	FI-X30HL (Locked Type)	

3.2.2 Connector Pin Assignment

PIN #	Symbol	Description
1	RxO0-	Negative LVDS differential data input (Odd data)
2	RxO0+	Positive LVDS differential data input (Odd data)
3	RxO1-	Negative LVDS differential data input (Odd data)
4	RxO1+	Positive LVDS differential data input (Odd data)
5	RxO2-	Negative LVDS differential data input (Odd data)
6	RxO2+	Positive LVDS differential data input (Odd data)
7	GND	Ground
8	RxOCLK-	Negative LVDS differential clock input (Odd clock)
9	RxOCLK+	Positive LVDS differential clock input (Odd clock)
10	RxO3-	Negative LVDS differential data input (Odd data)
11	RxO3+	Positive LVDS differential data input (Odd data)
12	RxE0-	Negative LVDS differential data input (Even data)
13	RxE0+	Positive LVDS differential data input (Even data)
14	GND	Ground
15	RxE1-	Negative LVDS differential data input (Even data)
16	RxE1+	Positive LVDS differential data input (Even data)
17	GND	Ground
18	RxE2-	Negative LVDS differential data input (Even data)
19	RxE2+	Positive LVDS differential data input (Even data)
20	RxECLK-	Negative LVDS differential clock input (Even clock)
21	RxECLK+	Positive LVDS differential clock input (Even clock)
22	RxE3-	Negative LVDS differential data input (Even data)
23	RxE3+	Positive LVDS differential data input (Even data)
24	GND	Ground
25	NC	No connection (for AUO test only. Do not connect)



26	NC	No connection (for AUO test only. Do not connect)
27	NC	No connection (for AUO test only. Do not connect)
28	VDD	Power Supply Input Voltage
29	VDD	Power Supply Input Voltage
30	VDD	Power Supply Input Voltage

3.3 Electrical Characteristics

3.3.1 Absolute Maximum Rating

Permanent damage may occur if exceeding the following maximum rating.

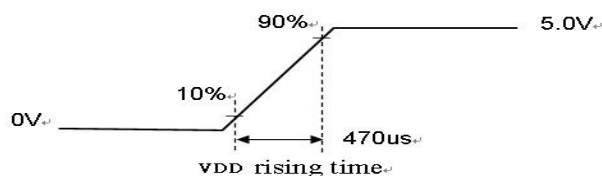
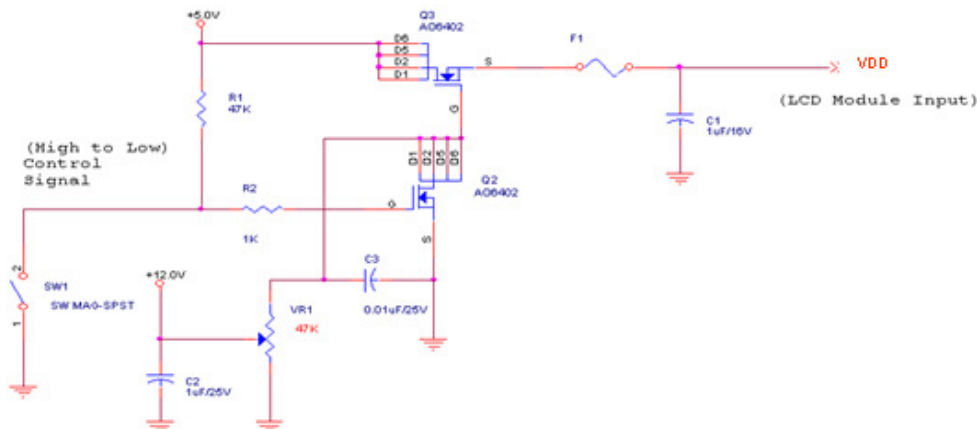
Symbol	Description	Min	Max	Unit	Remark
VDD	Power Supply Input Voltage	GND-0.3	6.0	[Volt]	Ta=25 °C

3.3.2 Recommended Operating Condition

Symbol	Description	Min	Typ	Max	Unit	Remark
VDD	Power supply Input voltage	4.5	5.0	5.5	[Volt]	
IDD	Power supply Input Current (RMS)	-	0.9	1.1	[A]	VDD= 5.0V, Black Pattern, Fv=60Hz
			1.1	1.3	[A]	VDD= 5.0V, Black Pattern, Fv=75Hz
PDD	VDD Power Consumption	-	4.5	5.5	[Watt]	VDD= 5.0V, Black Pattern, Fv=60Hz
			5.5	6.5	[Watt]	VDD= 5.0V, Black Pattern, Fv=75Hz
IRush	Inrush Current	-	-	3.0	[A]	Note 3-1
VDDrp	Allowable VDD Ripple Voltage	-	-	500	[mV]	VDD= 5.0V, Black Pattern, Fv=75Hz

Note 3-1: Inrush Current measurement:

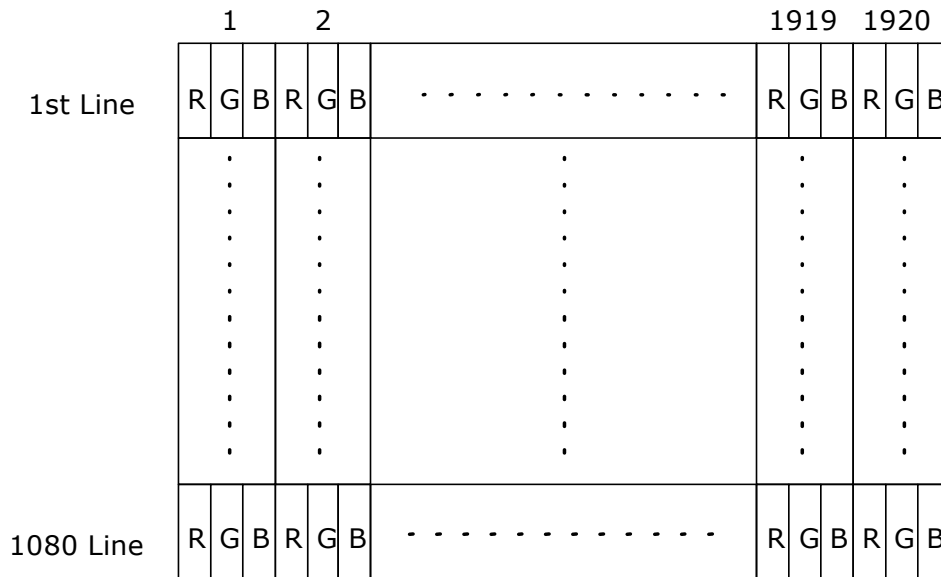
Test circuit:



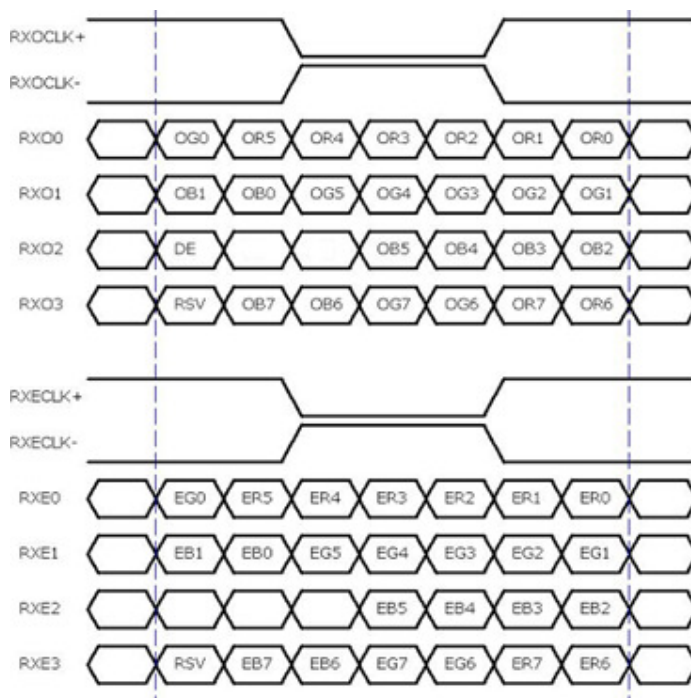
The duration of VDD rising time: 470us.

3.4 Signal Characteristics

3.4.1 LCD Pixel Format



3.4.2 LVDS Data Format



8 Bit Color Bit Order			
MSB	R7	G7	B7
	R6	G6	B6
	R5	G5	B5
	R4	G4	B4
	R3	G3	B3
	R2	G2	B2
	R1	G1	B1
LSB	R0	G0	B0

Note 3-2:

- a. O = "Odd Pixel Data" E = "Even Pixel Data"
- b. Refer to 3.4.1 LCD pixel format, the 1st data is 1 (Odd Pixel Data), the 2nd data is 2 (Even Pixel Data) and the last data is 1920 (Even Pixel Data).

3.4.3 Color versus Input Data

The following table is for color versus input data (8bit). The higher the gray level, the brighter the color.

Color	Gray Level	Color Input Data																								Remark
		RED data (MSB:R7, LSB:R0)								GREEN data (MSB:G7, LSB:G0)								BLUE data (MSB:B7, LSB:B0)								
		R7	R6	R5	R4	R3	R2	R1	R0	G7	G6	G5	G4	G3	G2	G1	G0	B7	B6	B5	B4	B3	B2	B1	B0	
Black	-	0	0	0	0	0	0	0	0	0	0	0	0	0	0	0	0	0	0	0	0	0	0	0	0	
White	-	1	1	1	1	1	1	1	1	1	1	1	1	1	1	1	1	1	1	1	1	1	1	1	1	
Gray 127	-	0	1	1	1	1	1	1	1	0	1	1	1	1	1	1	1	0	1	1	1	1	1	1	1	
Red	L0	0	0	0	0	0	0	0	0	0	0	0	0	0	0	0	0	0	0	0	0	0	0	0	0	Black
	:	:	:	:	:	:	:	:	:	:	:	:	:	:	:	:	:	:	:	:	:	:	:	:	:	
	L255	1	1	1	1	1	1	1	1	0	0	0	0	0	0	0	0	0	0	0	0	0	0	0	0	
Green	L0	0	0	0	0	0	0	0	0	0	0	0	0	0	0	0	0	0	0	0	0	0	0	0	0	Black
	:	:	:	:	:	:	:	:	:	:	:	:	:	:	:	:	:	:	:	:	:	:	:	:	:	
	L255	0	0	0	0	0	0	0	0	1	1	1	1	1	1	1	1	0	0	0	0	0	0	0	0	
Blue	L0	0	0	0	0	0	0	0	0	0	0	0	0	0	0	0	0	0	0	0	0	0	0	0	0	Black
	:	:	:	:	:	:	:	:	:	:	:	:	:	:	:	:	:	:	:	:	:	:	:	:	:	
	L255	0	0	0	0	0	0	0	0	0	0	0	0	0	0	0	0	1	1	1	1	1	1	1	1	

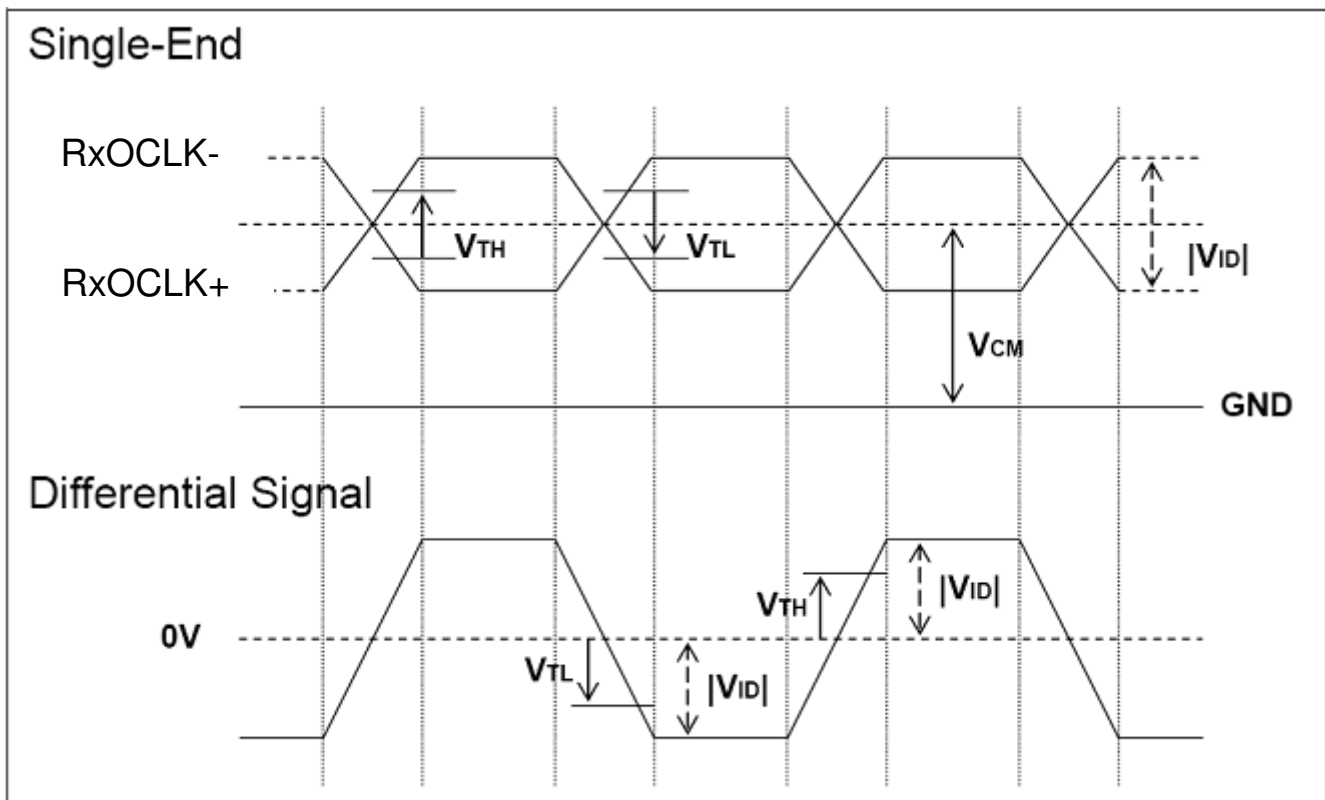
3.4.4 LVDS Specification

a. DC Characteristics:

Symbol	Description	Min	Typ	Max	Units	Condition
V_{TH}	LVDS Differential Input High Threshold	-	-	+100	[mV]	$V_{CM} = 1.2V$
V_{TL}	LVDS Differential Input Low Threshold	-100	-	-	[mV]	$V_{CM} = 1.2V$
$ V_{ID} $	LVDS Differential Input Voltage	100	-	600	[mV]	
V_{CM}	LVDS Common Mode Voltage	+1.0	+1.2	+1.5	[V]	$V_{TH} - V_{TL} = 200mV$

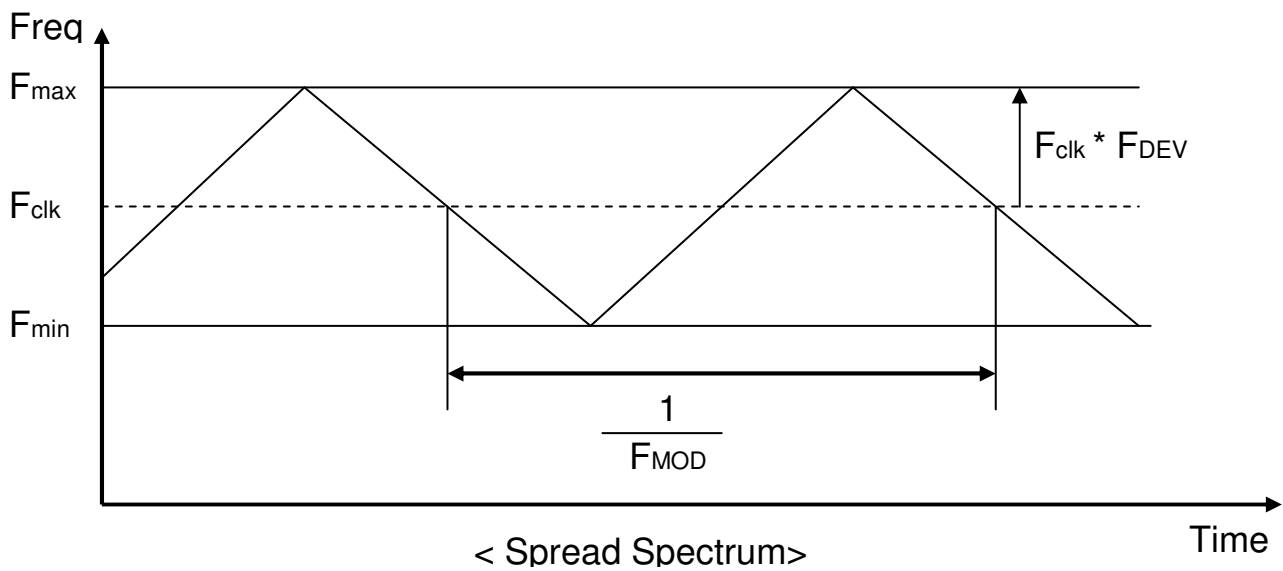
LVDS Signal Waveform:

Use RxOCLK- & RxOCLK+ as example.



b. AC Characteristics:

Symbol	Description	Min	Max	Unit	Remark
F_{DEV}	Maximum deviation of input clock frequency during Spread Spectrum	-	± 3	%	
F_{MOD}	Maximum modulation frequency of input clock during Spread Spectrum	-	200	KHz	



Fclk: LVDS Clock Frequency

3.4.5 Input Timing Specification

It only support DE mode, and the input timing are shown as the following table.

Symbol	Description		Min.	Typ.	Max.	Unit	Remark
Tv	Vertical Section	Period	1092	1130	1818	Th	
Tdisp (v)		Active	1080	1080	1080	Th	
Tblk (v)		Blanking	12	50	738	Th	
Fv		Frequency	50	60	76	Hz	
Th	Horizontal Section	Period	1034	1050	1100	Tclk	
Tdisp (h)		Active	960	960	960	Tclk	
Tblk (h)		Blanking	74	90	140	Tclk	
Fh		Frequency	55	68	91	KHz	Note 3-3
Tclk	LVDS Clock	Period	10.6	14.0	17.7	ns	1/Fclk
Fclk		Frequency	56.5	71.2	94.0	MHz	Note 3-4

Note 3-3: The equation is listed as following. Please don't exceed the above recommended value.

$$Fh \text{ (Min.)} = Fclk \text{ (Min.)} / Th \text{ (Min.)};$$

$$Fh \text{ (Typ.)} = Fclk \text{ (Typ.)} / Th \text{ (Typ.)};$$

$$Fh \text{ (Max.)} = Fclk \text{ (Max.)} / Th \text{ (Min.)};$$

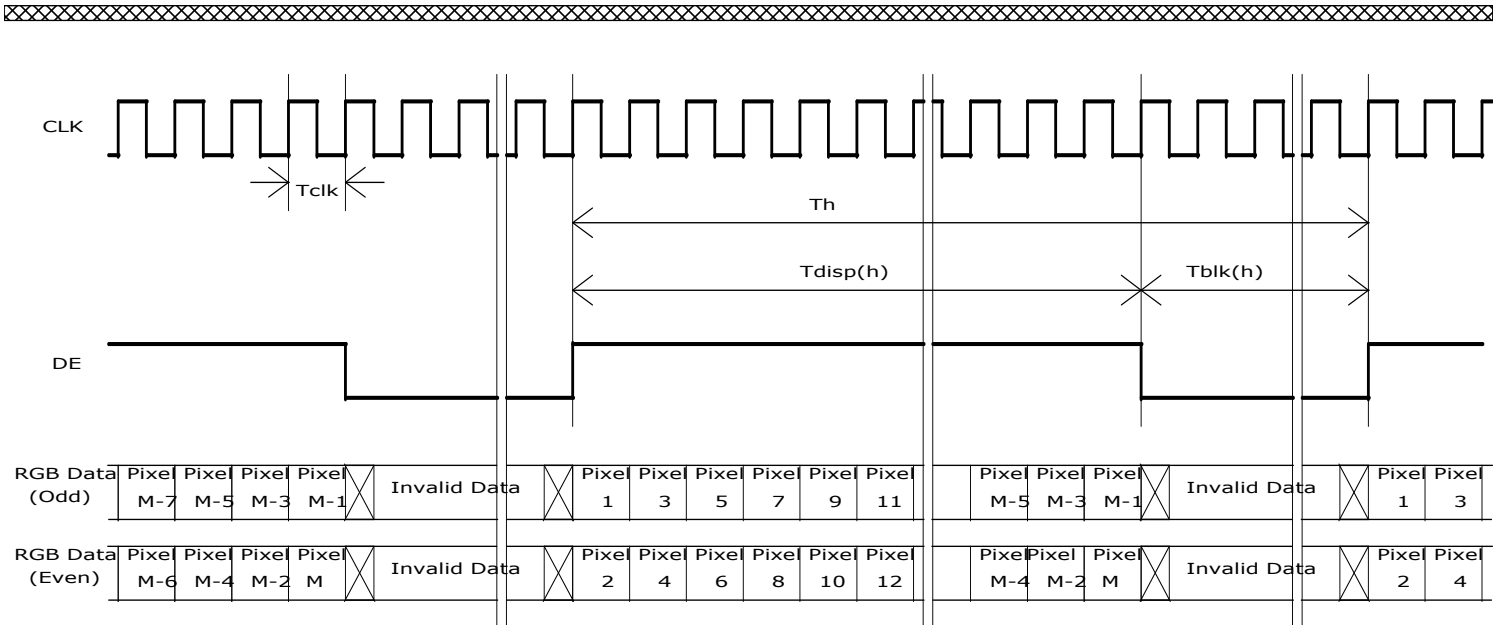
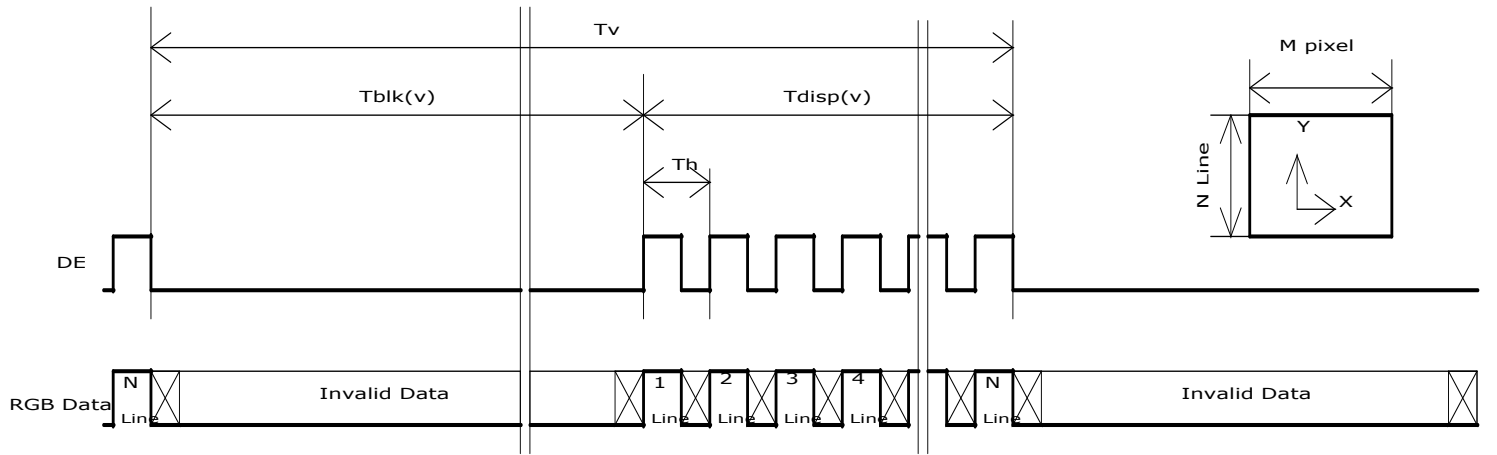
Note 3-4: The equation is listed as following. Please don't exceed the above recommended value.

$$Fclk \text{ (Min.)} = Fv \text{ (Min.)} \times Th \text{ (Min.)} \times Tv \text{ (Min.)};$$

$$Fclk \text{ (Typ.)} = Fv \text{ (Typ.)} \times Th \text{ (Typ.)} \times Tv \text{ (Typ.)};$$

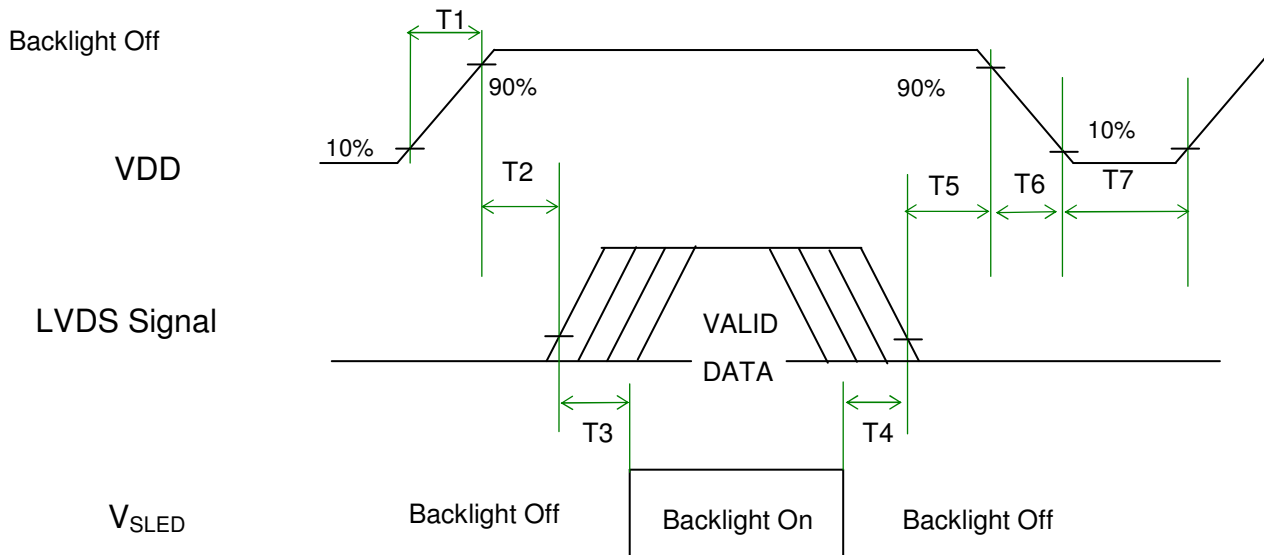
$$Fclk \text{ (Max.)} = Fv \text{ (Max.)} \times Th \text{ (Typ.)} \times Tv \text{ (Typ.)};$$

3.4.6 Input Timing Diagram



3.5 Power ON/OFF Sequence

VDD power, LVDS signal and backlight on/off sequence are as following. LVDS signals from any system shall be Hi-Z state when VDD is off.



Power Sequence Timing

Symbol	Value			Unit	Remark
	Min.	Typ.	Max.		
T1	0.5	-	10	[ms]	
T2	0	-	50	[ms]	
T3	500	-	-	[ms]	
T4	100	-	-	[ms]	
T5	0	-	50	[ms]	Note 3-5 Note 3-6
T6	0	-	100	[ms]	Note 3-6
T7	1000	-	-	[ms]	

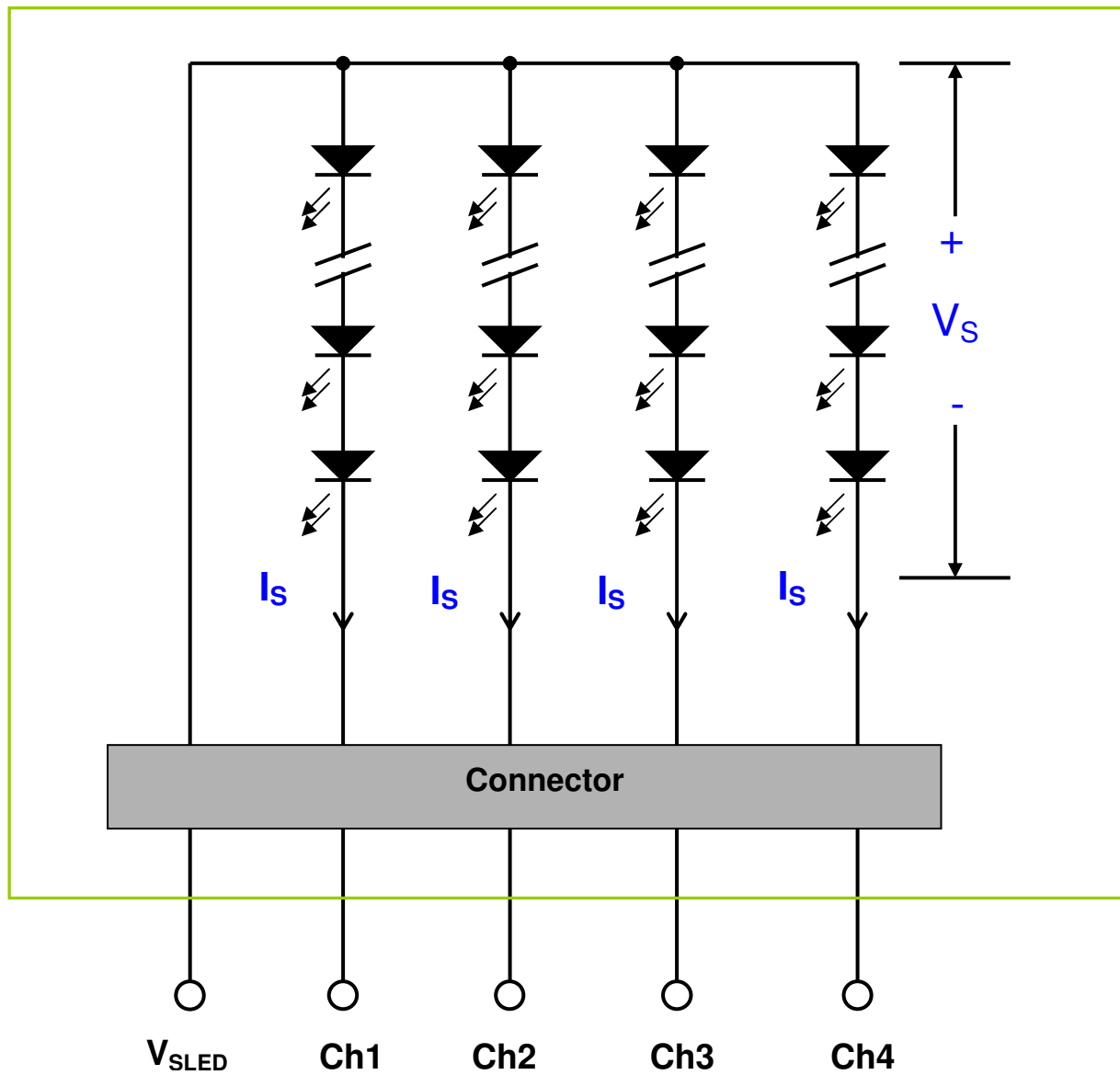
Note 3-5 : Recommend setting T5 = 0ms to avoid electronic noise when VDD is off.

Note 3-6 : During T5 and T6 period , please keep the level of input LVDS signals with Hi-Z state.

4 Backlight Unit

4.1 Block Diagram

The following shows the block diagram of the 27 inch Backlight Unit. And it includes 52 pcs LED in the LED light bar. (4 strings and 13 pcs LED of one string).



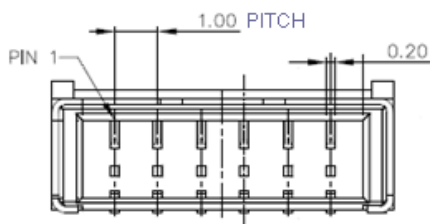
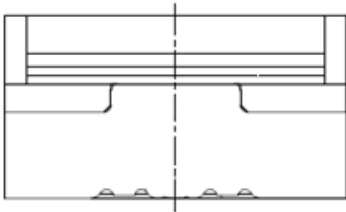
4.2 Interface Connection

4.2.1 Connector Type

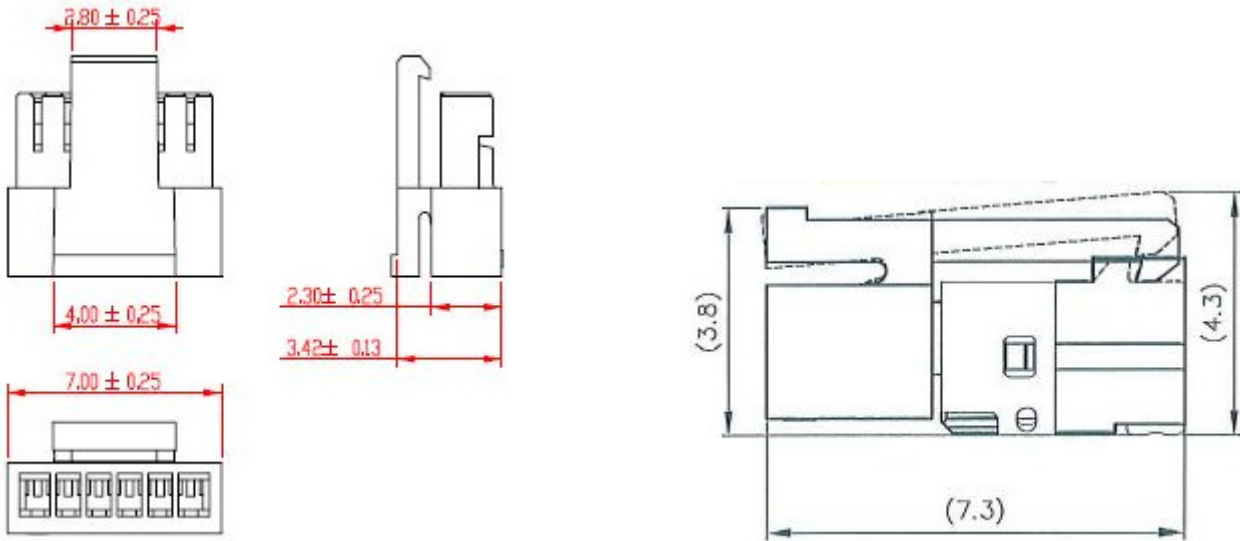
Backlight Connector	Manufacturer	ENTERY
	Part Number	3707K-S06N-21R
Mating Connector	Manufacturer	ENTERY
	Part Number	H112K-P06N-00B (Non-Locking type) H112K-P06N-03B (Locking type)

Backlight Connector dimension:

$H \times V \times D = 13.9 \times 3.00 \times 4.25$, $Pitch = 1.0$ (unit = mm)

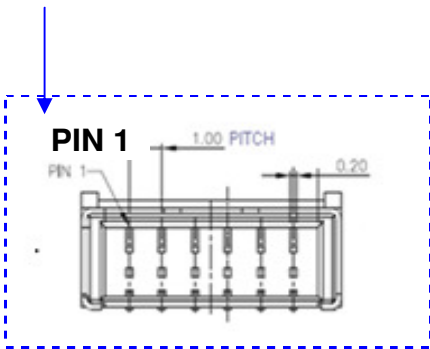
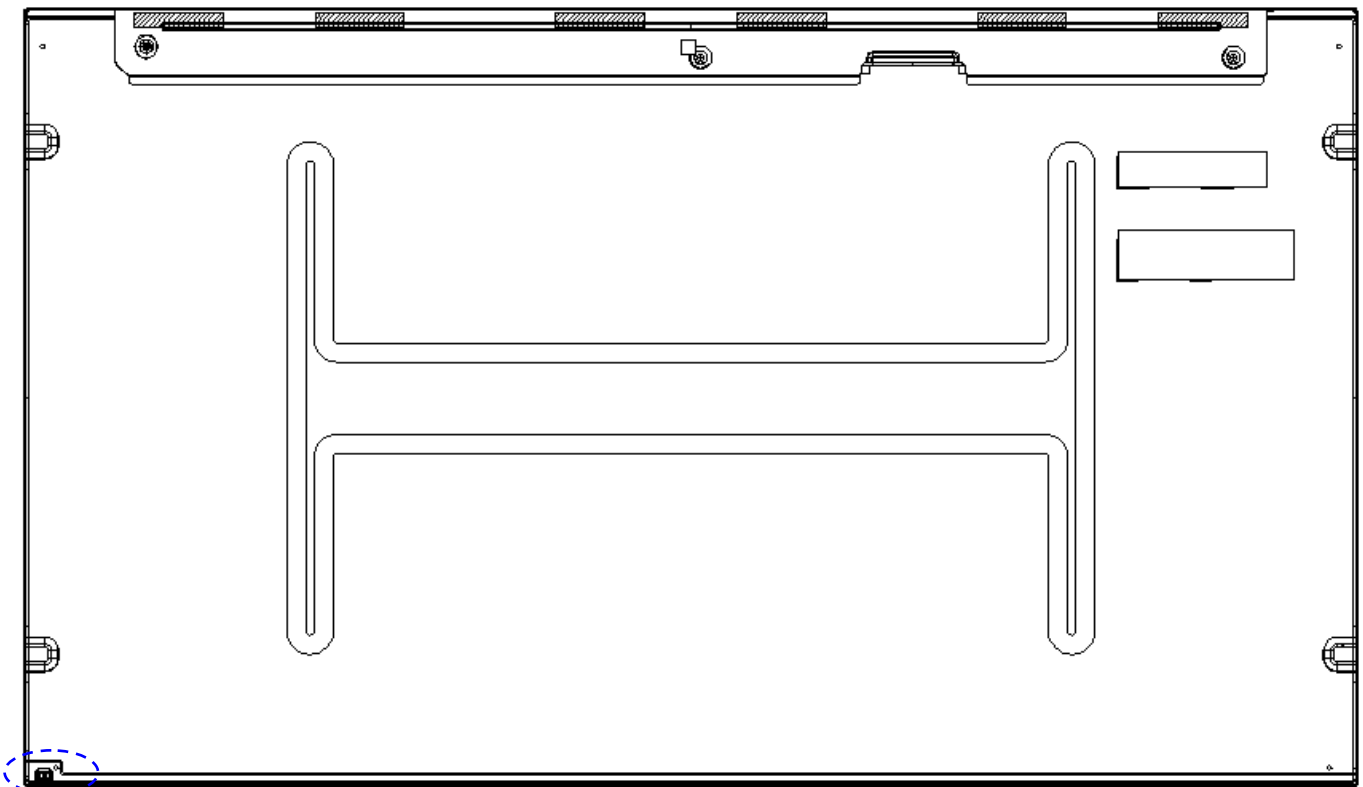


Mating Connector dimension:



4.2.2 Connector Pin Assignment

Pin#	Symbol	Description	Remark
1	Ch1	LED Current Feedback Terminal (Channel 1)	
2	Ch2	LED Current Feedback Terminal (Channel 2)	
3	V _{SLED}	LED Power Supply Voltage Input Terminal	
4	V _{SLED}	LED Power Supply Voltage Input Terminal	
5	Ch3	LED Current Feedback Terminal (Channel 3)	
6	Ch4	LED Current Feedback Terminal (Channel 4)	



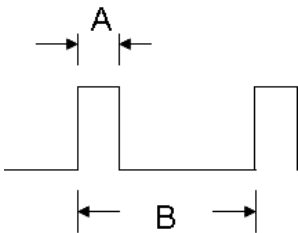
4.3 Electrical Characteristics

4.3.1 Absolute Maximum Rating

Permanent damage may occur if exceeding the following maximum rating.

(Ta=25°C)

Symbol	Description	Min	Max	Unit	Remark
Is	LED String Current	0	150	[mA]	100% duty ratio
			210	[mA]	Duty ratio ≤ 10% Pulse time=10 ms



Duty ratio= (A / B) X 100% ; (A: Pulse time, B: Period)

4.3.2 Recommended Operating Condition

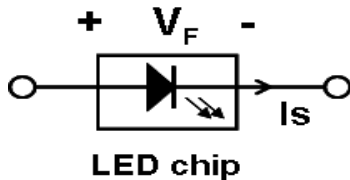
(Ta=25°C)

Symbol	Description	Min.	Typ.	Max.	Unit	Remark
Is	LED String Current	-	120	132	[mA]	100% duty ratio of LED chip
Vs	LED String Voltage	39	42.9	46.8	[Volt]	Is=120mA @ 100% duty ratio; Note 4-1, Note 4-5
ΔVs	Maximum Vs Voltage Deviation of light bar	-	-	2.6	[Volt]	Is=120mA @ 100% duty ratio; Note 4-2
P _{BLU}	LED Light Bar Power Consumption	-	20.6	22.5	[Watt]	Note 4-3
LT _{LED}	LED Life Time	30,000	-	-	[Hour]	Note 4-4

Note 4-1: $V_s (\text{Typ.}) = V_F (\text{Typ.}) \times \text{LED No. (one string)}$;

a. V_F : LED chip forward voltage, $V_F (\text{Min.})=3.0\text{V}$, $V_F(\text{Typ.})=3.3\text{V}$, $V_F(\text{Max.})=3.6\text{V}$

b. The same equation to calculate $V_s(\text{Min.})$ & $V_s (\text{Max.})$ for respective $V_F (\text{Min.})$ & $V_F(\text{Max.})$;



Note 4-2: $\Delta V_s (\text{Max.}) = \Delta V_F \times \text{LED No. (one string)}$;

a. ΔV_F : LED chip forward voltage deviation; (0.2 V , each Bin of LED V_F)

Note 4-3: $P_{\text{BLU}} (\text{Typ.}) = V_s (\text{Typ.}) \times I_s (\text{Typ.}) \times 4$; (4 is total String No. of LED Light bar)

$P_{\text{BLU}} (\text{Max.}) = V_s (\text{Max.}) \times I_s (\text{Typ.}) \times 4$;

Note 4-4: Definition of life time:

a. Brightness of LED becomes to 50% of its original value

b. Test condition: $I_s = 120\text{mA}$ and $25\text{ }^\circ\text{C}$ (Room Temperature)

Note 4-5: Recommendation for LED driver power design:

Due to there are electrical property deviation in LED & monitor set system component after long time operation. AUO strongly recommend the design value of LED driver board OVP (over voltage protection) should be 10% higher than max. value of LED string voltage (V_s) at least.

Note 4-6: AUO strongly recommend “Analog Dimming” method for backlight brightness control for Wavy Noise Free. Otherwise, recommend that Dimming Control Signal (PWM Signal) should be synchronized with Frame Frequency.

5 Reliability Test

AUO reliability test items are listed as following table. (*Bare Panel only*)

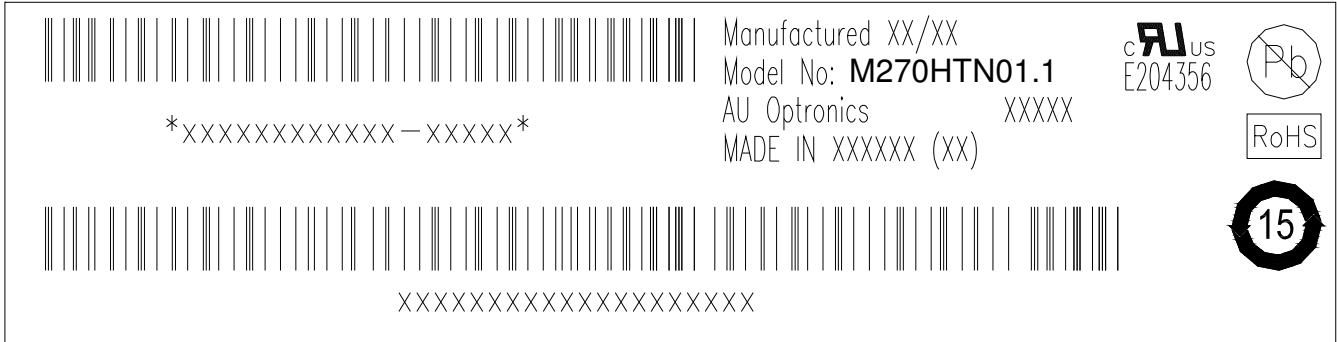
Items	Condition	Remark
Temperature Humidity Bias (THB)	Ta= 50 °C , 80%RH, 300hours	
High Temperature Operation (HTO)	Ta= 50 °C , 50%RH, 300hours	
Low Temperature Operation (LTO)	Ta= 0 °C , 300hours	
High Temperature Storage (HTS)	Ta= 60 °C , 300hours	
Low Temperature Storage (LTS)	Ta= -20 °C , 300hours	
Vibration Test (Non-operation)	Acceleration: 1.5 Grms Wave: Random Frequency: 10 - 200 Hz Sweep: 30 Minutes each Axis (X, Y, Z)	
Shock Test (Non-operation)	Acceleration: 50 G Wave: Half-sine Active Time: 20 ms Direction: ±X, ±Y, ±Z (one time for each Axis)	
Drop Test	Height: 45.7 cm, package test	
Thermal Shock Test (TST)	-20 °C /30min, 60 °C /30min, 100 cycles	Note 5-1
On/Off Test	On/10sec, Off/10sec, 30,000 cycles	
ESD (Electro Static Discharge)	Contact Discharge: ± 15KV, 150pF(330Ω) 1sec, 8 points, 25 times/ point.	Note 5-2
	Air Discharge: ± 15KV, 150pF(330Ω) 1sec 8 points, 25 times/ point.	
Altitude Test	Operation:18,000 ft Non-Operation:40,000 ft	

- Note 5-1:** a. A cycle of rapid temperature change consists of varying the temperature from -20 °C to 60 °C, and back again. Power is not applied during the test.
b. After finish temperature cycling, the unit is placed in normal room ambient for at least 4 hours before power on.

Note 5-2: EN61000-4-2, ESD class B: Certain performance degradation allowed
No data lost
Self-recoverable
No hardware failures.

6 Shipping Label

The label is on the panel as shown below:



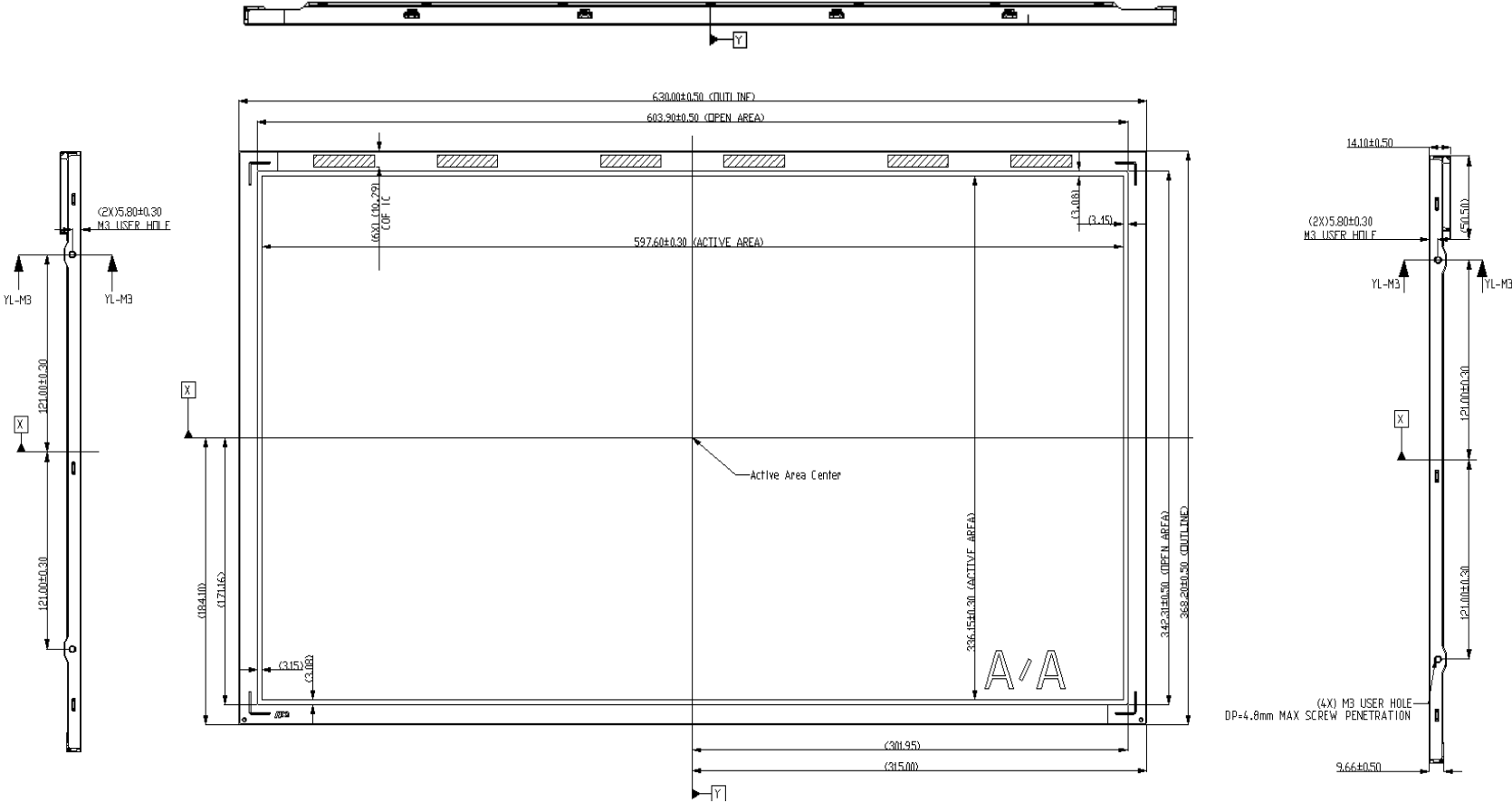
Note 6-1: For Pb Free products, AUO will add  for identification.

Note 6-2: For RoHS compatible products, AUO will add  for identification.

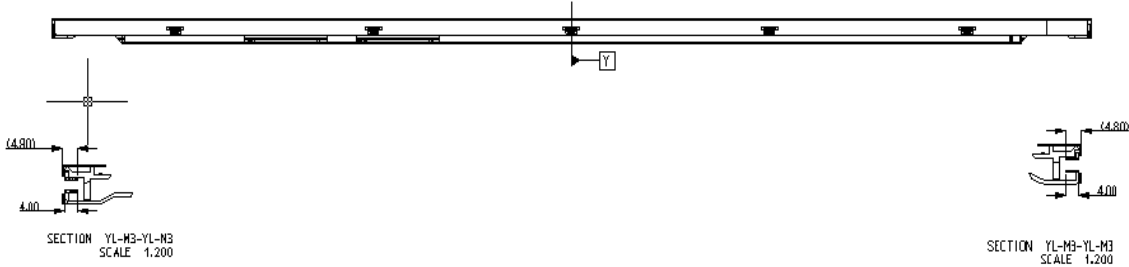
Note 6-3: For China RoHS compatible products, AUO will add  for identification.

Note 6-4: The Green Mark will be presented only when the green documents have been ready by AUO Internal Green Team.

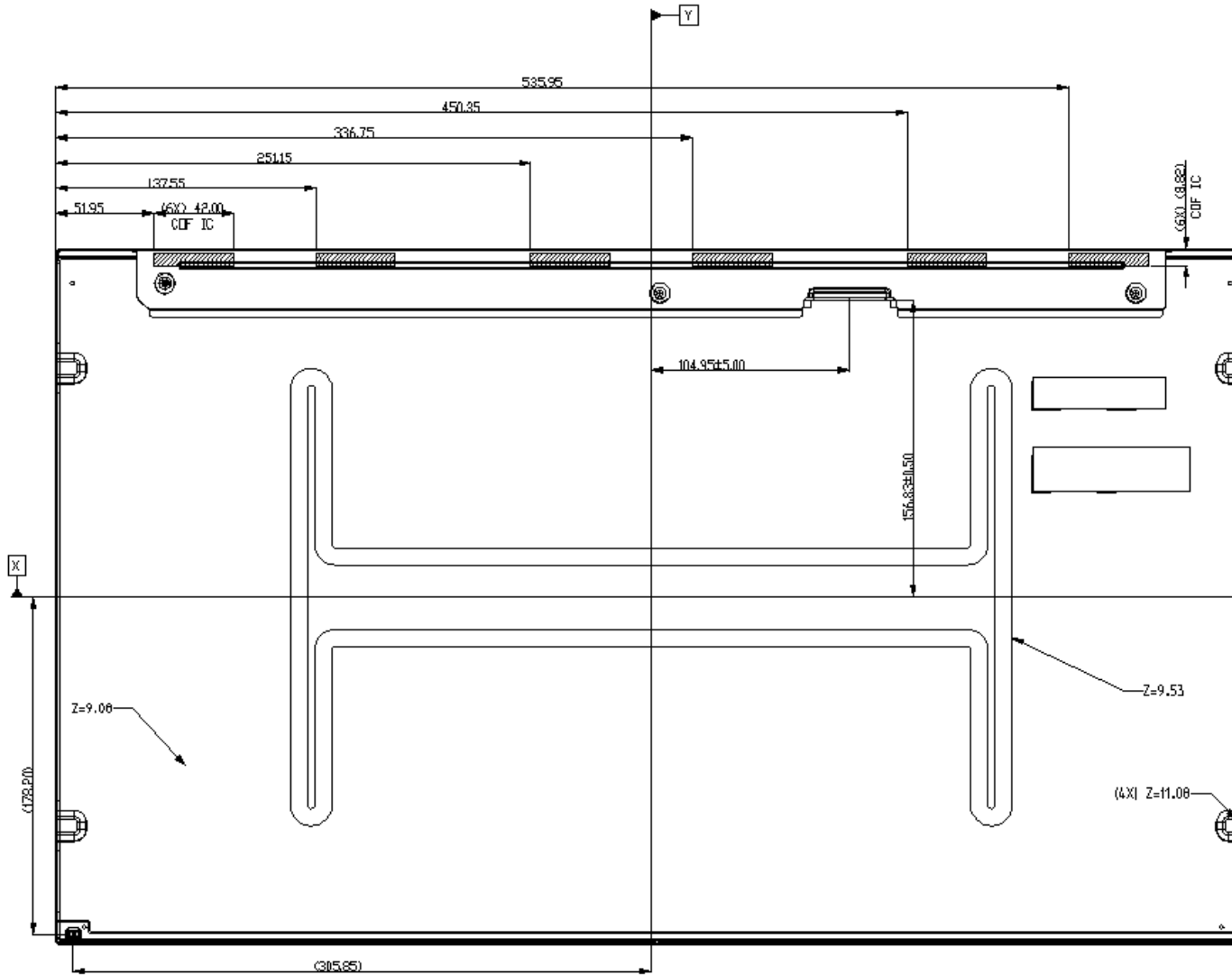
7 Mechanical Characteristics



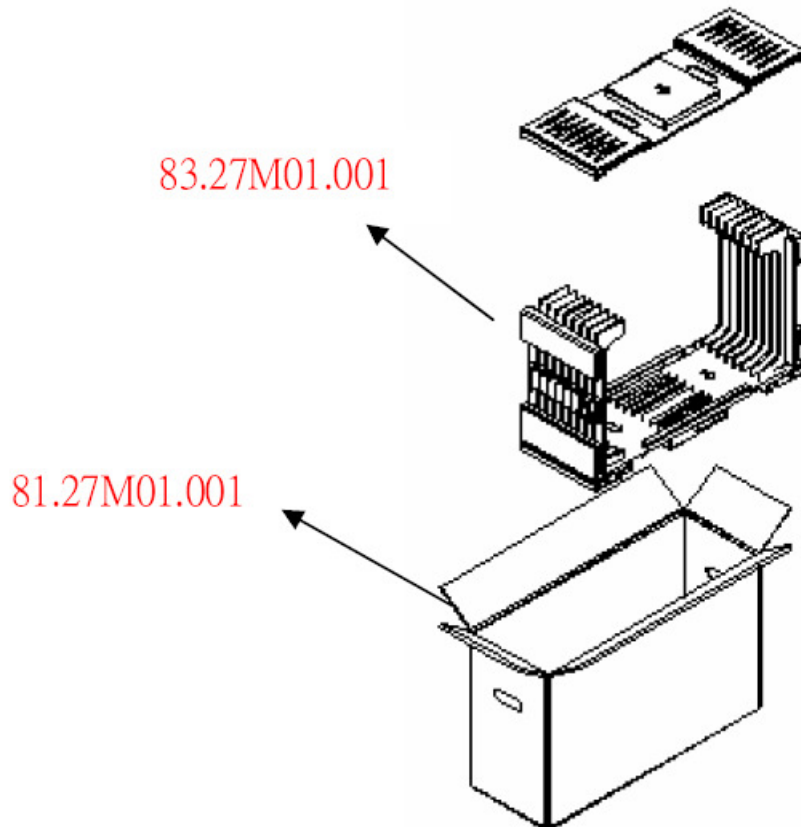
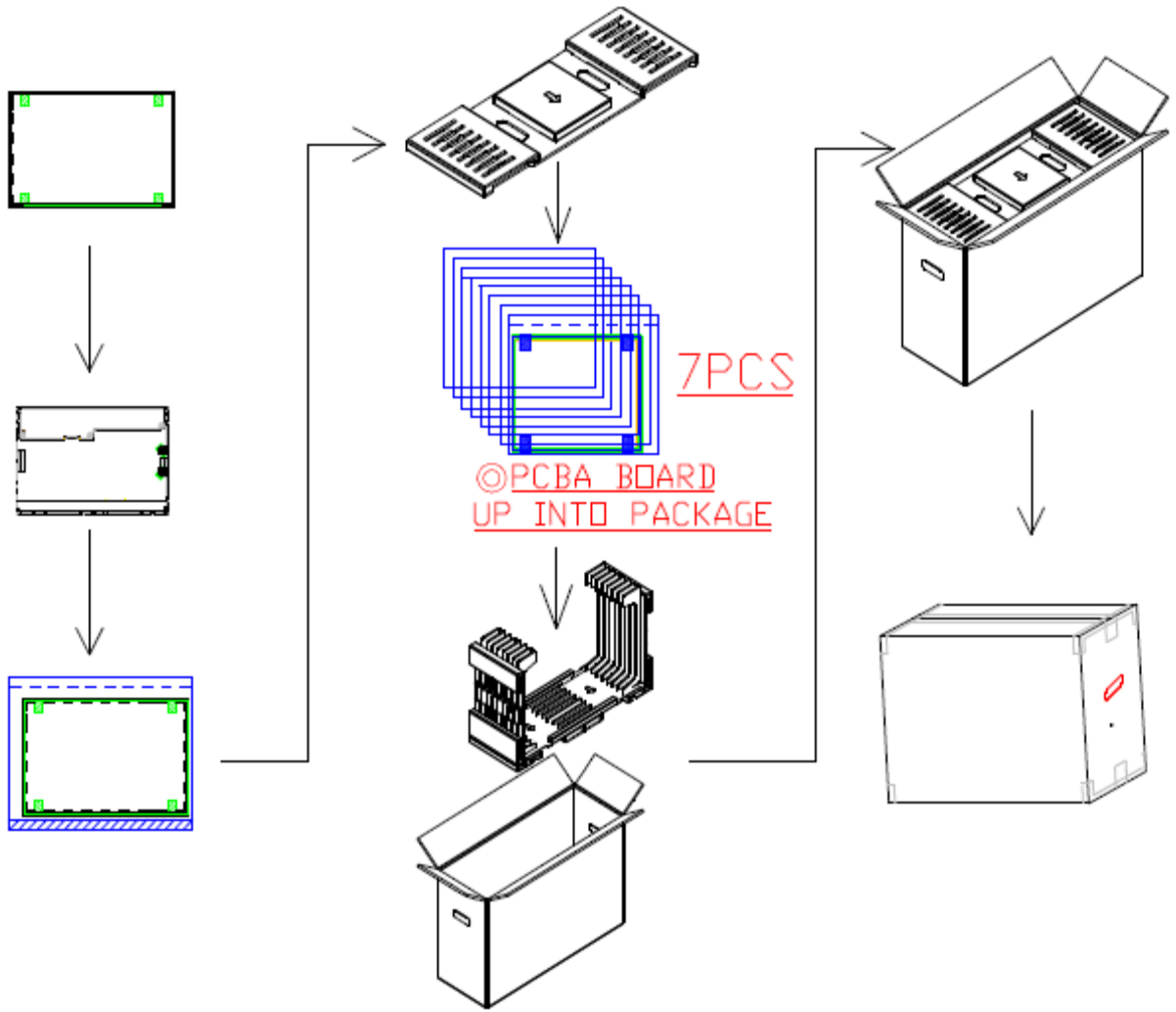
Avoid touching COF position when doing mechanical design



Avoid Touching CDF Position When Doing Mechanical Design



8 Packing Specification



Pallet and shipment information

	Item	Specification			Remark
		Q'ty	Dimension	Weight(kg)	
1	Panel	1	630(H)mm x 368.2(V)mm x 14.1(D)mm	2.86	
2	Cushion	1	-	2.97	
3	Box	1	720(L)mm x 264(W)mm x 455(H)mm	1.43	without Panel & cushion
4	Packing Box	7 pcs/Box	720(L)mm x 264(W)mm x 455(H)mm	26.80	with panel & cushion
5	Pallet	1	1070(L)mm x 740(W)mm x 140(H)mm	12	
6	Pallet after Packing	8 boxes/pallet	1070(L)mm x 740(W)mm x 140(H)mm	262.48	