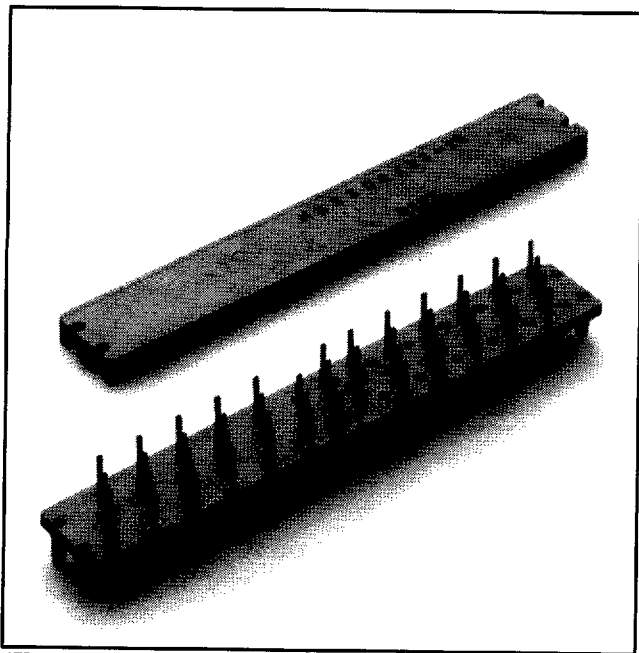


Printed Wiring Board Solder Transition

MIL-C-83503/23 Qualified



170

TS-0126-03
Sheet 1 of 2

- Connector solders directly to printed circuit board
- Meets all dimensional and performance requirements of MIL-C-83503
- Low profile
- Standard staggered grid
- Variety of pin lengths available

Physical

Insulation

Material: Glass Filled Polyester (PBT) Per MIL-M-24519

Color: Gray

Contact

Material: Beryllium Copper Per QQ-C-533

Plating: 200 μ " [3.81 μ m] Tin Lead — Per MIL-P-81728

100 μ " [2.5 μ m] Nickel — Per QQ-N-290, Class 2

Wire Accomodation: 26 & 28 AWG Solid or Stranded, 30 AWG Solid

Marking: 3M Logo, Part Identification Number, Military Part Number and Data Code

Electrical

Current Rating: 1 A

Insulation Resistance: $> 1 \times 10^9 \Omega$ at 500 VDC

Withstanding Voltage: 1000 Vrms to Sea Level

Environmental

Temperature Rating: -55°C to $+120^\circ\text{C}$

CAGE (FSCM) No.: 533870

UL File No.: E68080

CSA File No.: LR 40791

3M Electronic Products Division

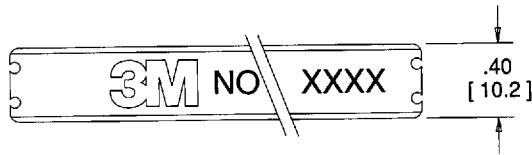
6801 River Place Blvd.
Austin, TX 78726-9000

9005413 0000473 846

Printed Wiring Board Solder Transition

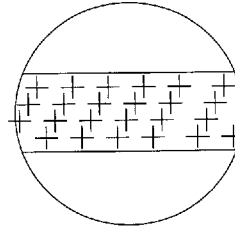
MIL-C-83503/23 Qualified

Sheet 2 of 2

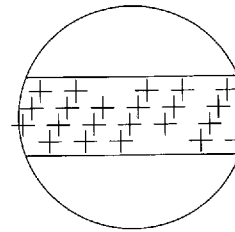


CENTER CONTACT LAYOUT DETAIL

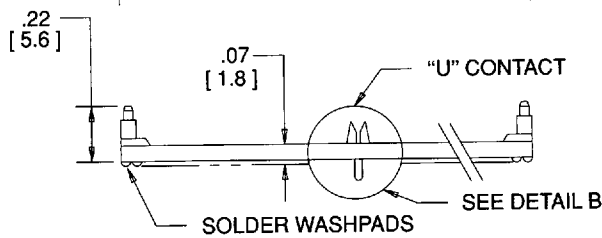
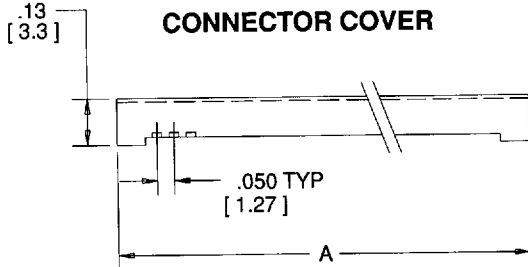
M3422, M3418



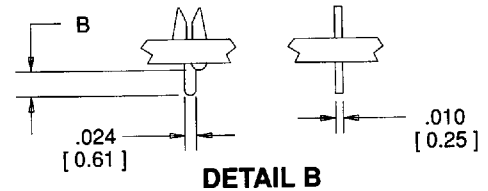
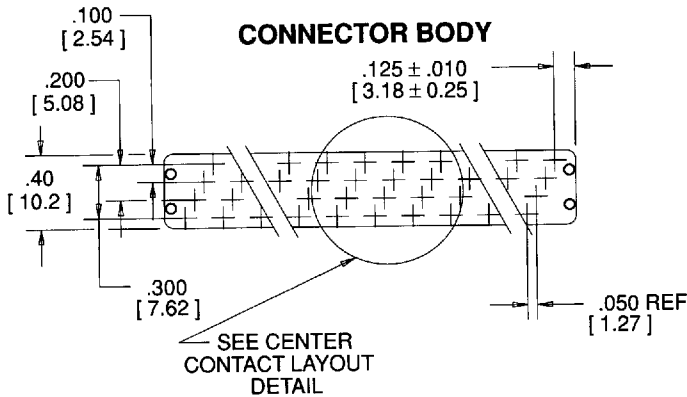
M3474, M3434, M3402, M3426



CONNECTOR COVER



CONNECTOR BODY



DETAIL B

Tolerance Unless Noted			
	.0	.00	.000
Inch	± .1	± .01	± .005

[] Dimensions for Reference Only

TS-0126-03

Ordering Information

Contact Quantity	3M Part Number	Military Part Number	Dim A	Dim B	P.W.B. Thickness
10	M3474-0000U	M83503/23-01	.70 [17.8]	.097 [2.46]	.062 [1.57]
	M3474-0001U	M83503/23-02		.153 [3.89]	.125 [3.17]
20	M3422-0000U	M83503/23-03	1.20 [30.5]	.097 [2.46]	.062 [1.57]
	M3422-0001U	M83503/23-04		.153 [3.89]	.125 [3.17]
26	M3434-0000U	M83503/23-05	1.50 [38.1]	.097 [2.46]	.062 [1.57]
	M3434-0001U	M83503/23-06		.153 [3.89]	.125 [3.17]
34	M3402-0000U	M83503/23-07	1.90 [48.3]	.097 [2.46]	.062 [1.57]
	M3402-0001U	M83503/23-08		.153 [3.89]	.125 [3.17]
40	M3418-0000U	M83503/23-09	2.20 [55.9]	.097 [2.46]	.062 [1.57]
	M3418-0001U	M83503/23-10		.153 [3.89]	.125 [3.17]
50	M3426-0000U	M83503/23-11	2.70 [68.6]	.097 [2.46]	.062 [1.57]
	M3426-0001U	M83503/23-12		.153 [3.89]	.125 [3.17]