

# M54521P

## 5-UNIT 500mA DARLINGTON TRANSISTOR ARRAY

### DESCRIPTION

The M54521P, 5-channel sink driver, consists of 10 NPN transistors connected to form high current gain driver pairs.

### FEATURES

- Output sustaining voltage to 30V
- High output sink current to 500mA
- Wide operating temperature range ( $T_a = -20 \sim +75^\circ\text{C}$ )

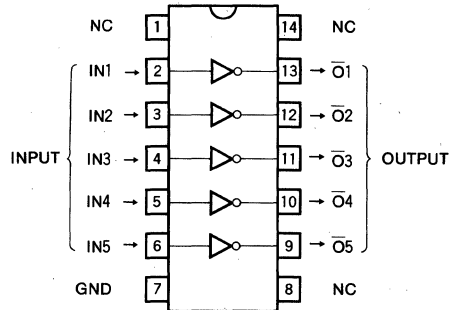
### APPLICATIONS

- Relay and printer drivers
- LED or incandescent display digit driver
- Interfacing for standard MOS/BIPOLAR logics

### FUNCTION

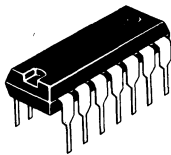
The M54521P is comprised of five NPN darlington driver pairs. All emitters and the substrate are connected together to pin 7. The output are capable of sinking 500mA and will withstand 30V in the OFF state.

### PIN CONFIGURATION (TOP VIEW)



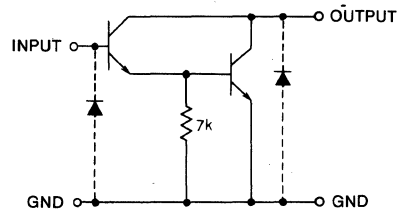
Outline 14P4

NC : NO CONNECTION



14-pin molded plastic DIL

### CIRCUIT SCHEMATIC



UNIT :  $\Omega$

### ABSOLUTE MAXIMUM RATINGS ( $T_a = -20 \sim +75^\circ\text{C}$ , unless otherwise noted)

Symbol	Parameter	Conditions	Limits	Unit
$V_{CEO}$	Output sustaining voltage	Transistor OFF	30	V
$I_C$	Collector current	Transistor ON	500	mA
$P_d$	Power dissipation	$T_a = 25^\circ\text{C}$	1.47	W
$T_{opr}$	Operating ambient temperature range		$-20 \sim +75$	$^\circ\text{C}$
$T_{stg}$	Storage temperature range		$-55 \sim +125$	$^\circ\text{C}$

**5-UNIT 500mA DARLINGTON TRANSISTOR ARRAY**

**RECOMMENDED OPERATIONAL CONDITIONS** ( $T_a = -20 \sim +75^\circ\text{C}$ , unless otherwise noted)

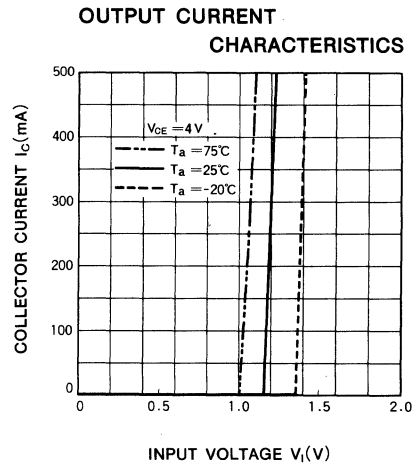
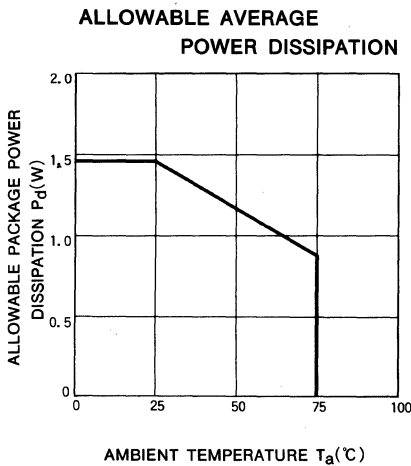
Symbol	Parameter		Limits			Unit
			Min	Typ	Max	
$V_O$	Output voltage				30	V
$I_C$	Collector current per channel	Percent duty cycle less than 10%			400	mA
		Percent duty cycle less than 55%			200	mA
$I_{IH}$	"H" Input current	$I_C = 200\text{mA}$	1			mA
		$I_C = 400\text{mA}$	2			
$I_{IL}$	"L" Input current				10	$\mu\text{A}$

**ELECTRICAL CHARACTERISTICS** ( $T_a = -20 \sim +75^\circ\text{C}$ , unless otherwise noted)

Symbol	Parameter	Test conditions	Limits			Unit
			Min	Typ*	Max	
$V_{(BR)CEO}$	Output sustaining voltage	$I_{CEO} = 100\mu\text{A}$	30			V
$V_{CE(sat)}$	Output saturation voltage	$V_I = 2\text{mA}, I_C = 400\text{mA}$			2.4	V
		$V_I = 1\text{mA}, I_C = 200\text{mA}$			1.6	V
$V_I$	Input voltage	$I_I = 1\text{mA}$		1.35	1.7	V

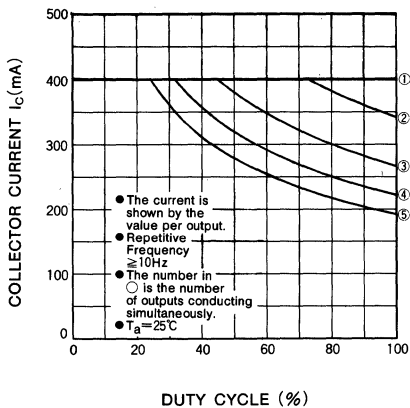
\* : A typical value is at  $T_a = 25^\circ\text{C}$ .

**TYPICAL CHARACTERISTICS**

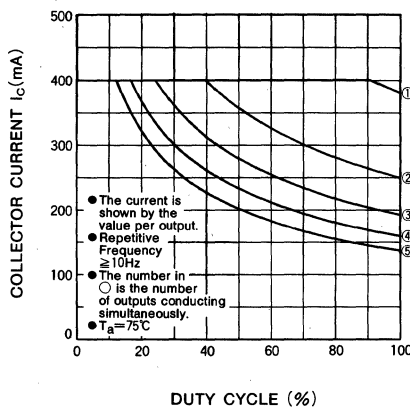


5-UNIT 500mA DARLINGTON TRANSISTOR ARRAY

ALLOWABLE COLLECTOR CURRENT AS A FUNCTION OF DUTY CYCLE



ALLOWABLE COLLECTOR CURRENT AS A FUNCTION OF DUTY CYCLE



DC CURRENT GAIN CHARACTERISTICS

