



# SAW Components

Data Sheet M 9260 M





**SAW Components**

**M 9260 M**

**IF Filter for Audio Applications**

**45,75 MHz**

**Data Sheet**

**Standard**

Plastic package **SIP5K**

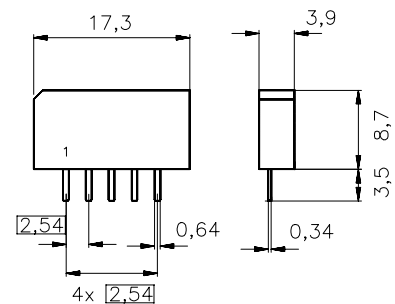
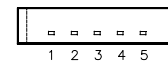
- M/N

**Features**

- TV IF audio filter with pass bands for picture carrier at 45,75 MHz and sound carrier at 41,25 MHz

**Terminals**

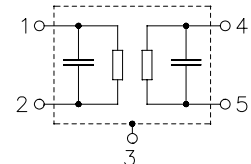
- Tinned CuFe alloy



Dimensions in mm, approx. weight 1,0 g

**Pin configuration**

- 1 Input
- 2 Input - ground
- 3 Chip carrier - ground
- 4 Output
- 5 Output



Type	Ordering code	Marking and package according to	Packing according to
M 9260 M	B39458-M9260-M100	C61157-A1-A15	F61074-V8067-Z000

**Maximum ratings**

Operable temperature range	$T_A$	-25/+65	°C	
Storage temperature range	$T_{stg}$	-40/+85	°C	
DC voltage	$V_{DC}$	5	V	between any terminals
AC voltage	$V_{pp}$	10	V	between any terminals



SAW Components

M 9260 M

IF Filter for Audio Applications

45,75 MHz

Data Sheet

Characteristics

Reference temperature:

$$T_A = 25 \text{ }^\circ\text{C}$$

Terminating source impedance:

$$Z_S = 50 \text{ } \Omega$$

Terminating load impedance:

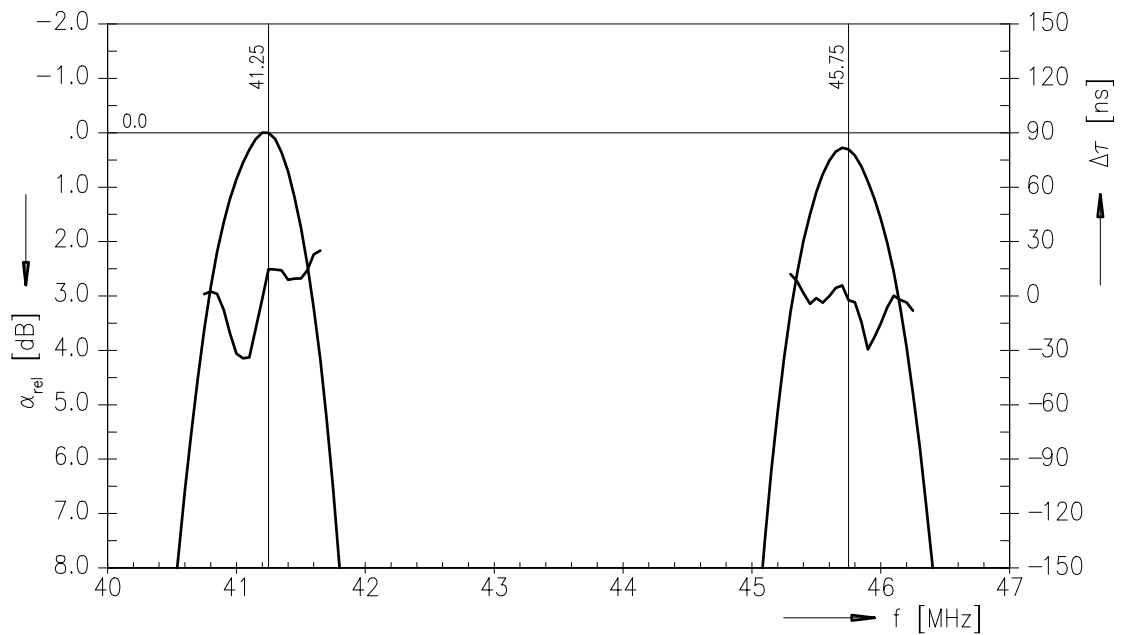
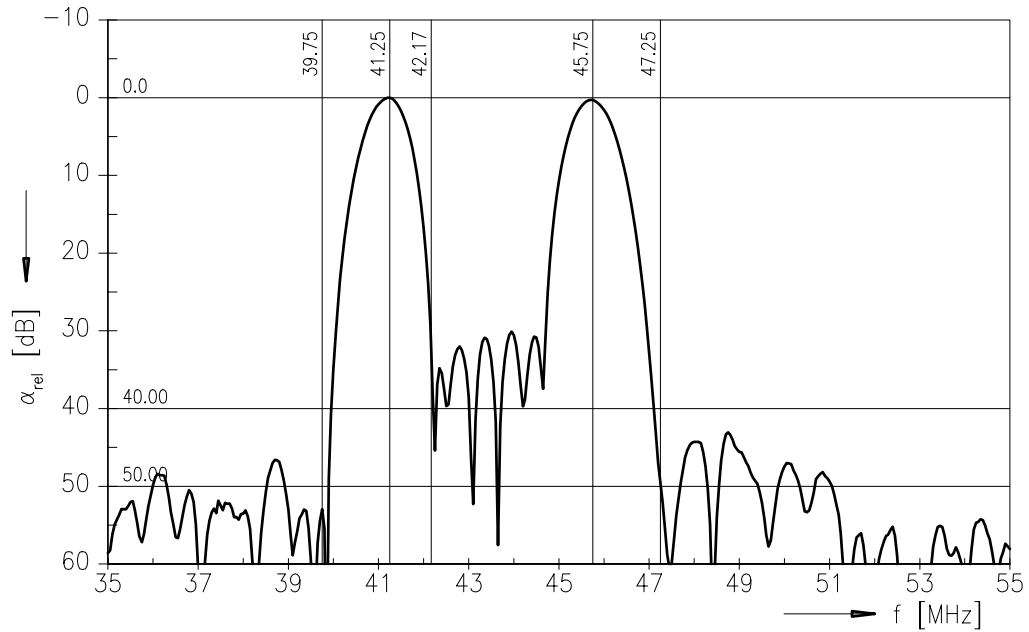
$$Z_L = 2 \text{ k}\Omega \parallel 3 \text{ pF}$$

		min.	typ.	max.	
<b>Insertion attenuation</b>					
	$\alpha$				
Reference level for the following data	41,25 MHz	12,6	14,1	15,6	dB
<b>Relative attenuation</b>					
	$\alpha_{rel}$				
Picture carrier	45,75 MHz	-0,6	0,4	1,4	dB
Color carrier	42,17 MHz	22,0	28,0	—	dB
Adjacent picture carrier	39,75 MHz	42,0	50,0	—	dB
Adjacent sound carrier	47,25 MHz	40,0	48,0	—	dB
Lower sidelobe	35,00 ... 39,75 MHz	40,0	46,0	—	dB
Upper sidelobe	47,25 ... 55,00 MHz	36,0	42,0	—	dB
<b>Impedance</b> at 41,25 MHz					
	Input: $Z_{IN} = R_{IN} \parallel C_{IN}$	—	0,4 $\parallel$ 9,5	—	k $\Omega$ $\parallel$ pF
	Output: $Z_{OUT} = R_{OUT} \parallel C_{OUT}$	—	3,3 $\parallel$ 6,3	—	k $\Omega$ $\parallel$ pF
<b>Temperature coefficient of frequency</b>	$TC_f$	—	-72	—	ppm/K



Data Sheet

Frequency response





**SAW Components**

**M 9260 M**

**IF Filter for Audio Applications**

**45,75 MHz**

Data Sheet

**Published by EPCOS AG**

**Surface Acoustic Wave Components Division, SAW CE MM PD**

**P.O. Box 80 17 09, D-81617 München**

© EPCOS AG 2001. All Rights Reserved.

As far as patents or other rights of third parties are concerned, liability is only assumed for components per se, not for applications, processes and circuits implemented within components or assemblies.

The information describes the type of component and shall not be considered as assured characteristics.

Terms of delivery and rights to change design reserved.

For questions on technology, prices and delivery please contact the sales offices of EPCOS AG or the international representatives.

Due to technical requirements components may contain dangerous substances. For information on the type in question please also contact one of our sales offices.