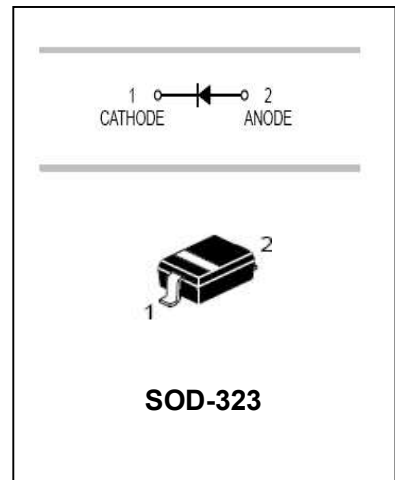


Schottky Barrier Diode

MA729

FEATURES

- For super-high speed switching circuit
- For small current rectification
- Allowing to rectify under ($I_{F(AV)}=200\text{mA}$) condition
- Allowing high-density mounting



APPLICATIONS

- Schottky epitaxial planar

ORDERING INFORMATION

Type No.	Marking	Package Code
MA729	2B	SOD-323

MAXIMUM RATING @ $T_a=25^\circ\text{C}$ unless otherwise specified

Parameter	Symbol	Limits	Unit
DC reverse voltage	V_R	30	V
Repetitive peak reverse voltage	V_{RRM}	30	V
Peak forward Current	I_{FM}	300	mA
Average forward Current	$I_{F(AV)}$	200	mA
Non-repetitive peak forward Surge Current	I_{FSM}	1000	mA
Power Dissipation	P_d	200	mW
Junction temperature	T_j	150	$^\circ\text{C}$
Storage temperature range	T_{stg}	-55 to +150	$^\circ\text{C}$

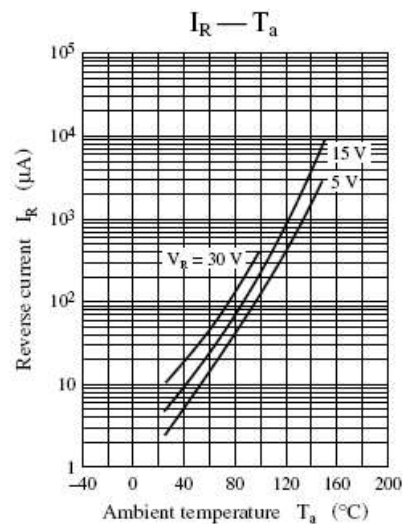
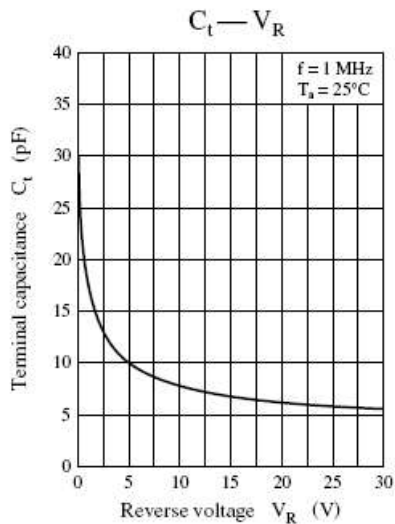
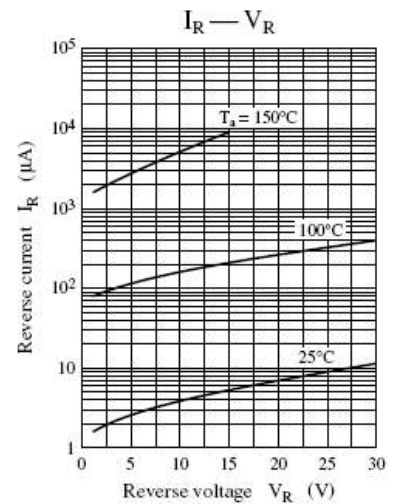
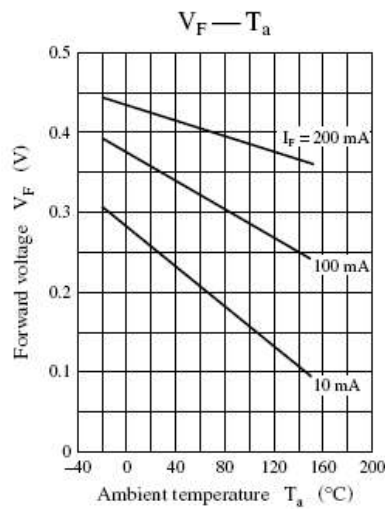
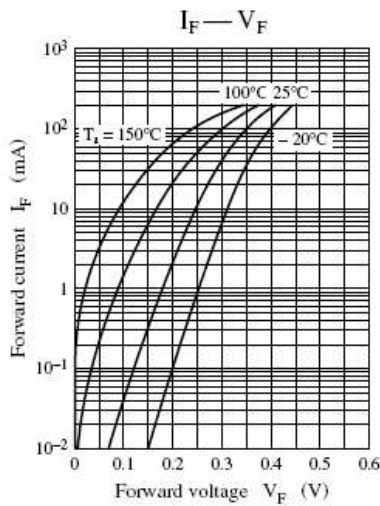
Schottky Barrier Diode

MA729

ELECTRICAL CHARACTERISTICS @ Ta=25°C unless otherwise specified

Parameter	Symbol	Conditions	Min.	Typ.	Max.	Unit
Reverse Breakdown Voltage	$V_{(BR)R}$	$I_R=100\mu A$	30			V
Forward voltage	V_F	$I_F=200mA$			0.55	V
Reverse leakage current	I_R	$V_R=30V$			50	μA
Reverse recovery time	t_{rr}	$I_F=I_R=100mA$, $I_{rr}=10mA, R_L=100\Omega$		3.0		ns
Total capacitance	C_T	$V_R=0V, f=1.0MHz$		30		pF

TYPICAL CHARACTERISTICS @ Ta=25°C unless otherwise specified



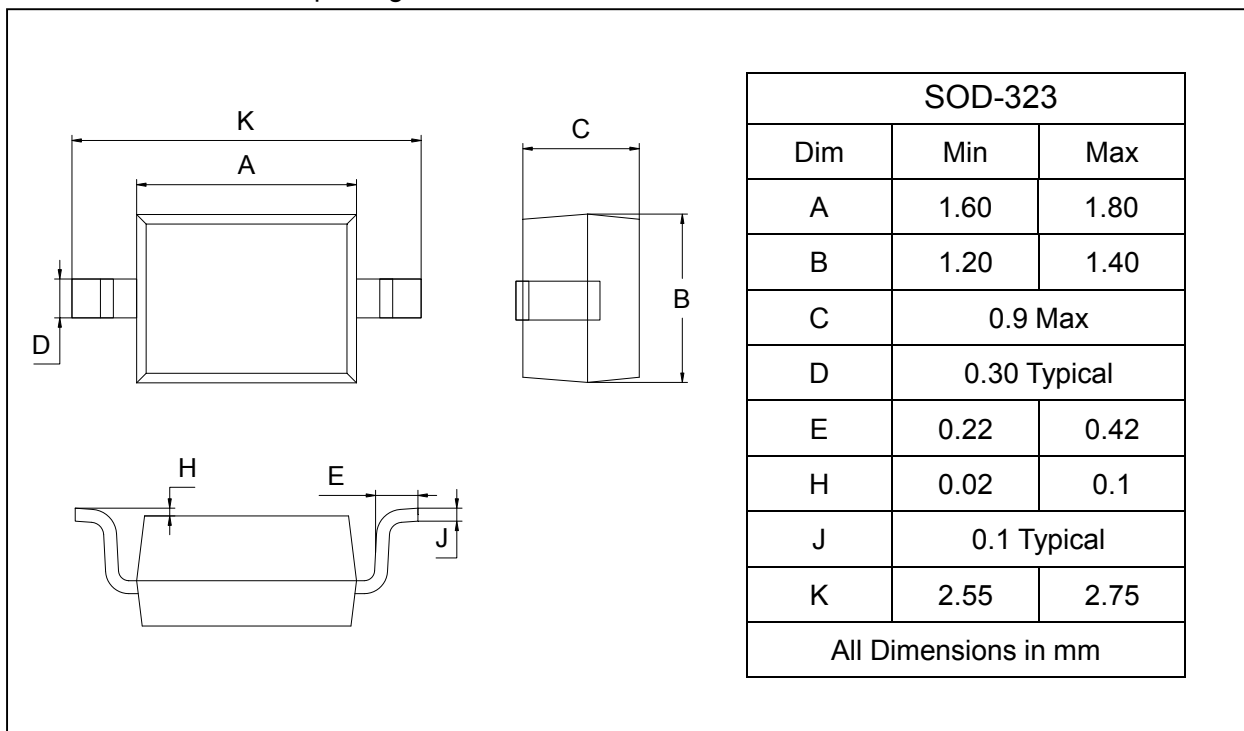
Schottky Barrier Diode

MA729

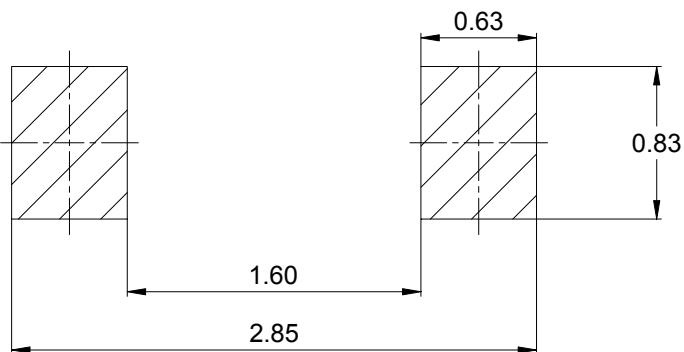
PACKAGE OUTLINE

Plastic surface mounted package

SOD-323



SOLDERING FOOTPRINT



Unit : mm

PACKAGE INFORMATION

Device	Package	Shipping
MA729	SOD-323	3000/Tape&Reel