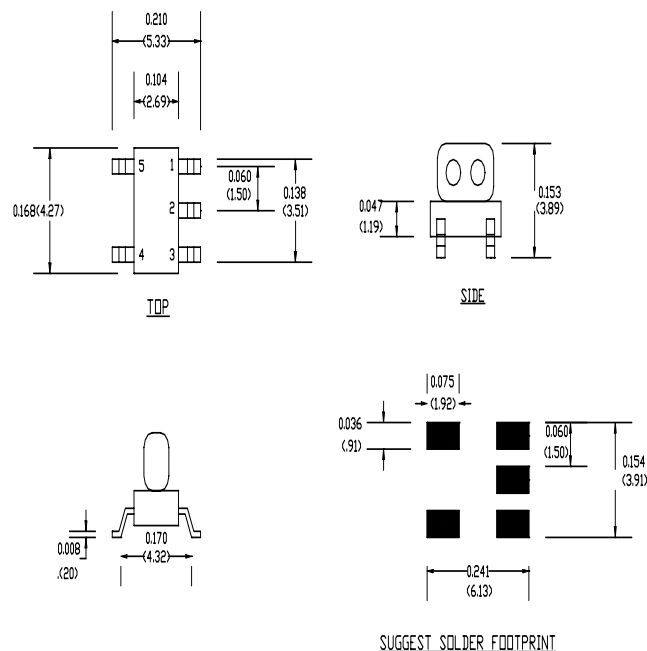
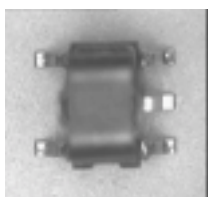


M/A-COM E-Series 75 Ohm Coupler 5 - 1000 MHz

SM-138 Package

Features

- Coupling +10db Typical
- Surface Mount
- Low Profile
- Excellent Return Loss
- Tape & Reel Packaging available



Description

M/A-COM's MACPES0034 is a high performance 75 Ohm Coupler, in a SM-138 low cost, surface mount package. The MACPES0034 is designed for use in high volume CATV applications. Typical applications include Settop Boxes, Network Interface Units, Line Amplifiers and Headend equipment.

Electrical Specifications @25°C, Z₀ = 75 Ohms

Frequency Range	5 - 870 MHz	Units	Nominal	Typical	Minimum	Maximum
Mainline Loss	5 - 500 MHz	dB	—	0.9	—	1.3
	500 - 870 MHz	dB	—	1.2	—	1.5
	500 - 1000 MHz	dB	—	1.6	—	1.8
Coupling	5 - 870 MHz	dB	10	—	—	± 0.5
	870—1000 MHz	dB	10	—	—	± 0.9
Coupling Flatness		dB	—	—	—	1.0
Isolation	5 - 500 MHz	dB	—	30	25	—
	500 - 1000 MHz	dB	—	23	20	—
Input Return Loss	5 - 1000 MHz	dB	—	20	18	—
Output Return Loss	5 - 1000 MHz	dB	—	20	18	—
Coupled Return Loss	5 - 1000 MHz	dB	—	20	18	—

Specifications subject to change without notice.

S 1615 A

V1.0

■ North America: Tel. (800) 366-2266, Fax (800) 618-8883
 ■ Asia/Pacific: Tel.+81-44-844-8296, Fax +81-44-844-8298
 ■ Europe: Tel. +44 (1344) 869 595, Fax+44 (1344) 300 020

Visit www.macom.com for additional data sheets and product information.

tyco / Electronics

M/A-COM

Absolute Maximum Ratings

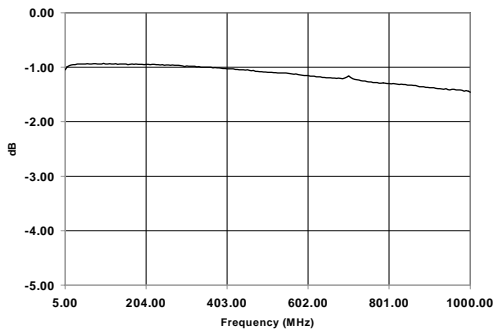
Parameter	Absolute Maximum
RF Power	250 mW
DC Current	30 mA
Storage Temperature	-55°C to +100°C
Operating Temperature	-40°C to +70°C

Operating Characteristics

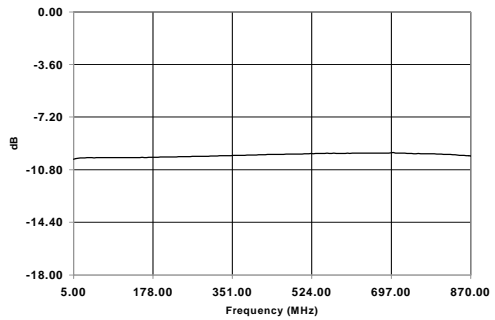
Function	Pin No.
Input	1
Output	5
Coupled	3
External 75 Ohms	4
Ground	2

Typical Performance @ +25°C

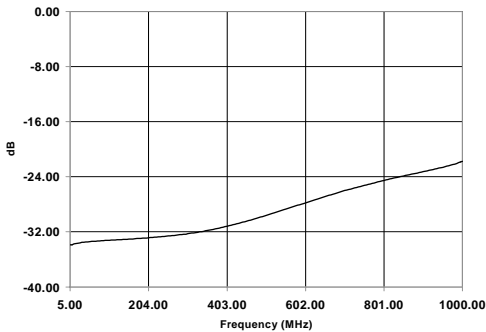
Mainline Loss



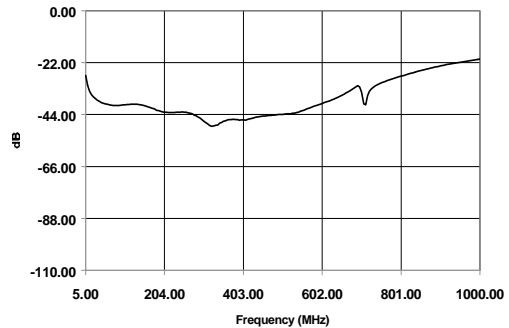
Coupling



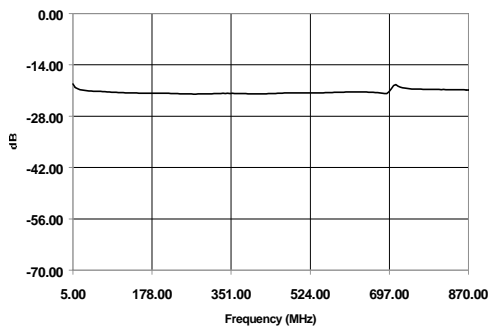
Isolation



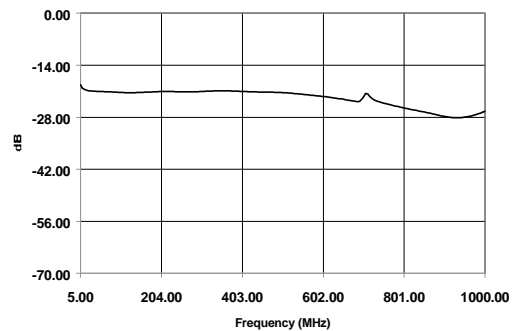
Output Return Loss



Input Return Loss



Coupled Port Return Loss



Specifications subject to change without notice.

S 1615 A

V1.0

- North America: Tel. (800) 366-2266, Fax (800) 618-8883
- Asia/Pacific: Tel.+81-44-844-8296, Fax +81-44-844-8298
- Europe: Tel. +44 (1344) 869 595, Fax+44 (1344) 300 020

Visit www.macom.com for additional data sheets and product information.

