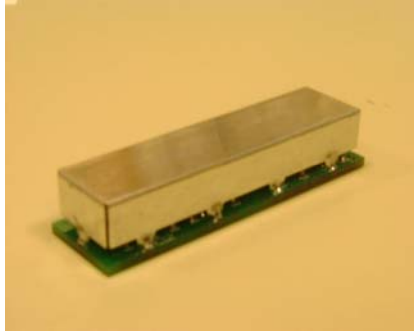


# CATV Diplexer

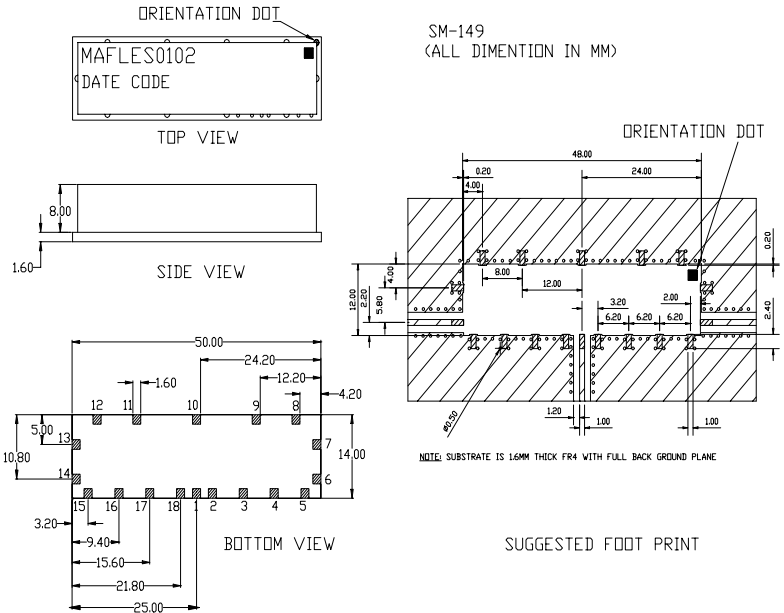
## 5 – 870 MHz

Preliminary

MAFLES0102



### SM-149 Case Style



#### Features

- Surface Mount
- Impedance 75 Ohms Nominal

#### Description

M/A-COM's MAFLES0102 is a very low cost, small size, non-hermetically sealed filter unit designed for CATV applications. The technology use in the design of this unit is patent pending.

#### Electrical Specifications @ 25°C

Parameter	Test Conditions	Units	Min.	Typ.	Max.
Frequency Range 5 – 870MHz					
Low Pass Cutoff	42	MHz	-	-	-
High Pass Cutoff	54	MHz	-	-	-
Insertion Loss					
5 - 42MHz		dB	-	0.5	1.2
54 – 870 MHz		dB	-	0.5	1.2
Isolation					
5 – 42MHz		dB	40	45	-
54 – 870MHz		dB	40	45	-
Return Loss Input Port					
5 – 42MHz		dB	15	18	-
54 – 870MHz		dB	15	18	-

#### Additional Specifications

Group Delay (nSec)
40.5 - 42MHz ≤ 20ns
54 – 55.5MHz ≤ 20ns

Rev -

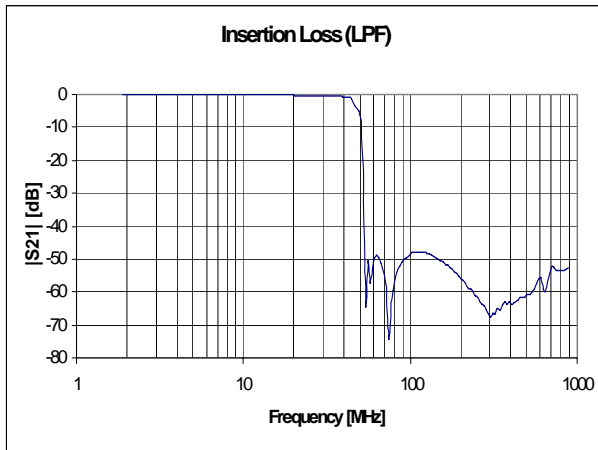
Specifications subject to change without notice.

- North America: Tel. (800) 366-2266, Fax (800) 618-8883
- Asia/Pacific: Tel.+81-44-844-8296, Fax +81-44-844-8298
- Europe: Tel. +44 (1344) 869 595, Fax+44 (1344) 300 020

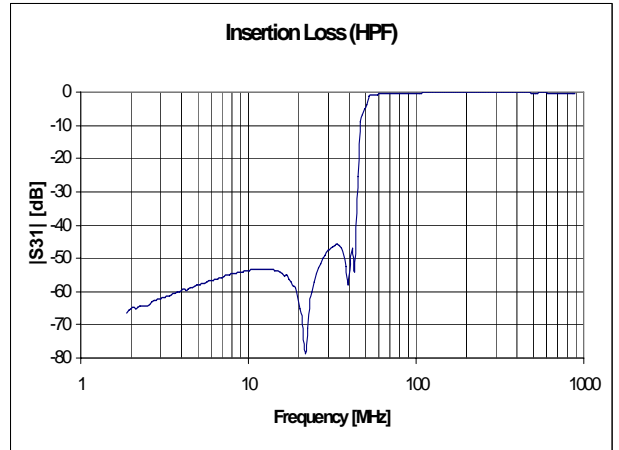
Visit [www.macom.com](http://www.macom.com) for additional data sheets and product information.

Typical Performance @ +25° C

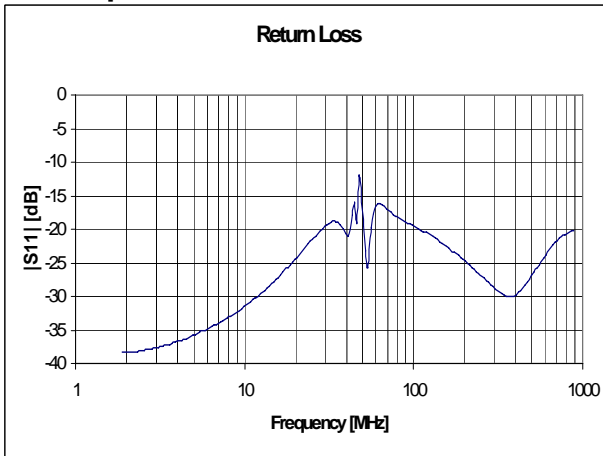
Low Pass Filter Insertion Loss



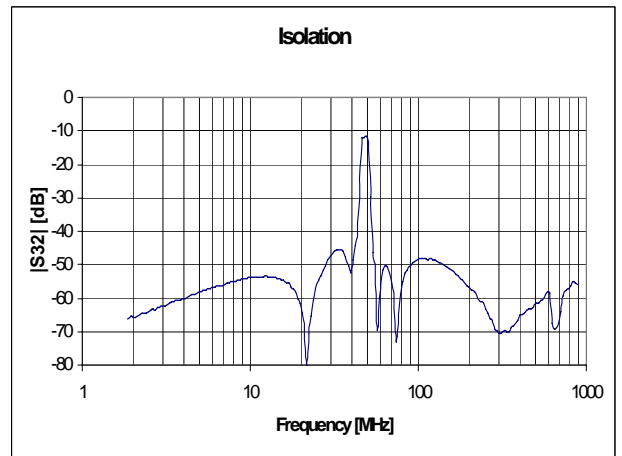
High Pass Filter Insertion Loss



Input Return Loss



Isolation



Absolute Maximum Ratings

Parameter	Absolute Maximum
RF Power	250 mW
DC Current	30 mA
Operating/Storage Temperature	-40° C to +85° C

Functional Configuration

Function	Pin No.
Input	1
High Pass Output	6
Low Pass Output	14
Ground	2-5, 7-13, 15-18
Not Connected	-

Rev -

Specifications subject to change without notice.

- North America: Tel. (800) 366-2266, Fax (800) 618-8883
- Asia/Pacific: Tel.+81-44-844-8296, Fax +81-44-844-8298
- Europe: Tel. +44 (1344) 869 595, Fax+44 (1344) 300 020

Visit [www.macom.com](http://www.macom.com) for additional data sheets and product information.

