

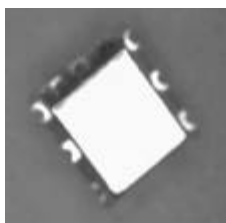


# E-Series Surface Mount Mixer

## 925-960 MHz

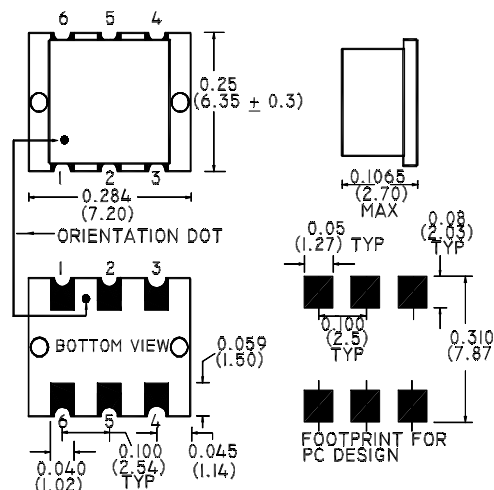
### Features

- LO Power +7 dBm
- Up to +1 dBm RF
- Surface Mount
- Low Profile



### SM-125Package

Note: Non Hermetic Package



### Description

M/A-COM's MAMXES0004 is a Low Cost, high performance Double Balanced Mixer designed for use in high volume wireless applications. The device has been optimised by careful selection of the Schottky Diode and Balun Transformer for excellent performance. MAMXES0004 is available in an SM-125 surface mount package and reflows using standard soldering reflow profiles.

### Electrical Specifications @ +25°C, Z<sub>0</sub> = 50 Ohms, LO = +7dBm ±2dBm

Parameter	Units	Minimum	Typical	Maximum
Frequency Range				
RF 925-960	MHz	—	—	—
LO 45	MHz	—	—	—
IF 880-915	MHz	—	—	—
Conversion Loss 925-960	dB	—	8.0	9.0
Isolation (LO - RF) 45	dB	40	45	—
Isolation (LO - IF) 45	dB	40	50	—
Isolation (RF - IF) 880-915	dB	12	16	—
RF Input for 1dB Compression	dBm	-2	—	—

**Absolute Maximum Ratings**

Parameter	Absolute Maximum
RF Power	50 mW
Peak IF Current	40 mA
Storage Temperature	-55°C to +100°C
Operating Temperature	-55°C to +100°C
Pin Temperature (10 Seconds)	260°C

**Functional Configuration**

Function	Pin No.
LO	6
RF	2
IF	3
Ground	1, 4, 5
Case Ground	—
Unconnected	—