

MB1S-10~MB10S-10

Rev.C Feb.-2015

描述 / Descriptions

1.0A 表面贴装玻璃钝化整流桥，MBS 封装。

1.0A Surface Mount Glass Passivated Bridge Rectifier, MBS package.

特征 / Features

玻璃钝化芯片，反向电压：100V~1000V，正向电流：1.0A，浪涌电流大，适用于表面贴装。无卤产品。

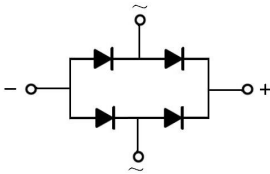
Glass Passivated Chip Junction, Reverse Voltage:100to1000V, Forward Current:1.0A, High Surge Current Capability, Designed for Surface Mount Application.Halogen free product.

用途 / Applications

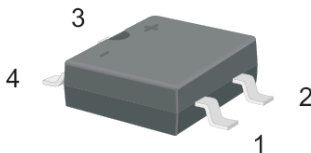
一般用途。

General purpose.

内部等效电路 / Equivalent Circuit

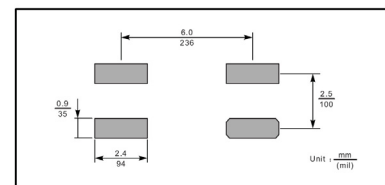


引脚排列 / Pinning



PIN	DESCRIPTION
1	Input Pin (~)
2	Input Pin (~)
3	Output Anode (+)
4	Output Cathode (-)

The recommended mounting pad size



印章代码 / Marking

见印章说明。See Marking Instructions.

极限参数 / Absolute Maximum Ratings(Ta=25°C)

参数 Parameter	符号 Symbol	数值 Rating						单位 Unit
		MB1S-10	MB2S-10	MB4S-10	MB6S-10	MB8S-10	MB10S-10	
Maximum Repetitive Peak Reverse Voltage	V _{RRM}	100	200	400	600	800	1000	V
Maximum RMS voltage	V _{RMS}	70	140	280	420	560	700	V
Maximum DC Blocking Voltage	V _{DC}	100	200	400	600	800	1000	V
Average Rectified Output Current at T _a = 50°C	I _o	1.0						A
Peak Forward Surge Current 8.3 ms Single Half Sine Wave Superimposed on Rated Load (JEDEC Method)	I _{FSM}	35						A
Typical Junction Capacitance (Note1)	C _j	13						pF
Typical Thermal Resistance (Note2)	R _{θJA}	85						°C/W
Typical Thermal Resistance (Note2)	R _{θJL}	30						°C/W
Operating and Storage Temperature Range	T _j , T _{stg}	-55~+150						°C

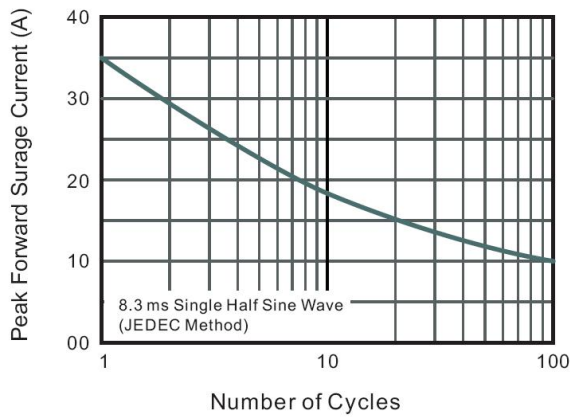
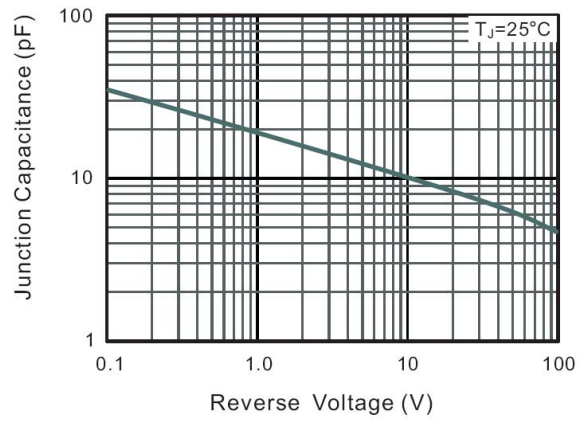
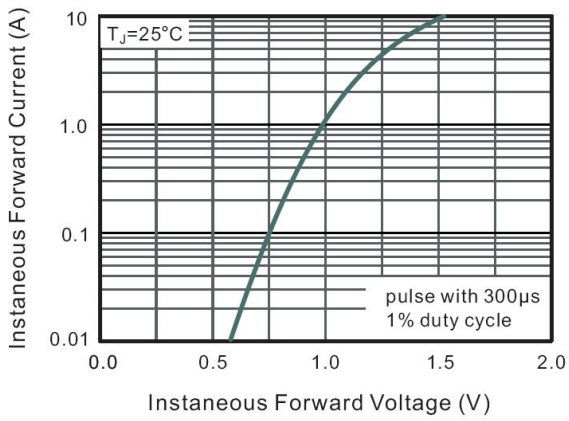
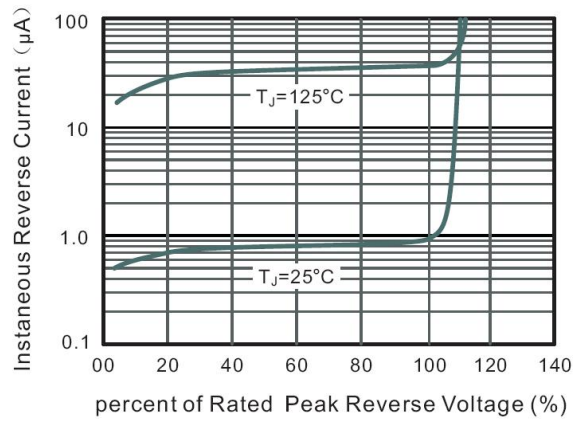
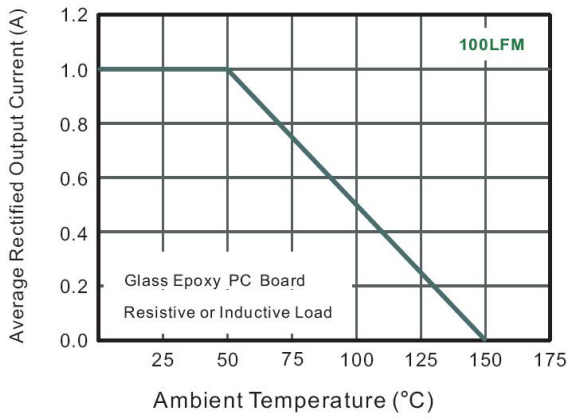
Note:

1. Measured at 1MHz and applied reverse voltage of 4 V D.C.
2. Mounted on glass epoxy PC board with 4×(5×5mm²) copper pad..

电性能参数 / Electrical Characteristics(Ta=25°C)

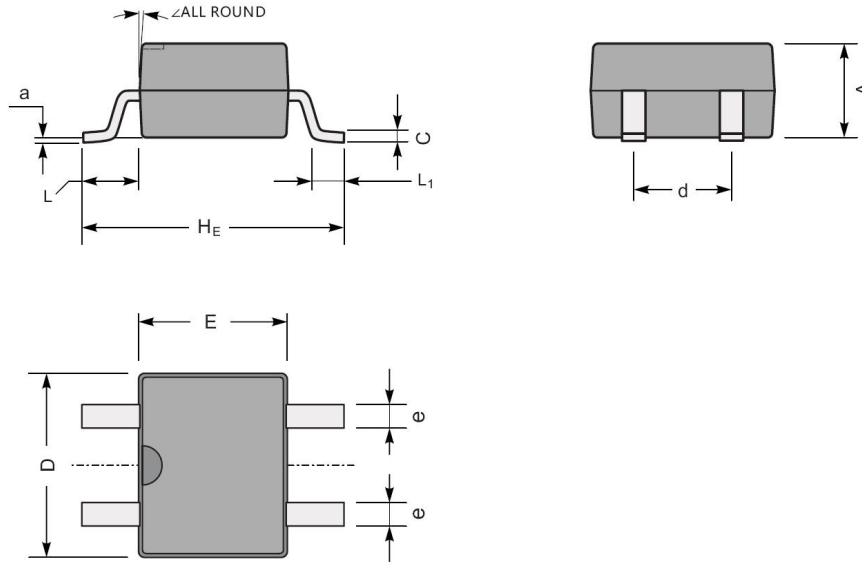
参数 Parameter	符号 Symbol	测试条件 Test condition	数值 Rating	单位 Unit
Maximum Forward Voltage	V _F	I _F =1.0A	1.1	V
Maximum DC Reverse Current at Maximum DC Blocking Voltage	I _R	T _a =25°C T _a =125°C	5.0 40	μA

电参数曲线图 / Electrical Characteristic Curve



外形尺寸图 / Package Dimensions

MBS



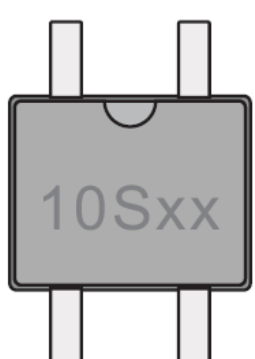
MBS mechanical data

UNIT		A	C	D	E	H_E	d	e	L	L_1	a	\angle
mm	max	2.6	0.22	5.0	4.1	7.0	2.7	0.7	1.7	1.1	0.2	7°
	min	2.2	0.15	4.5	3.6	6.4	2.3	0.5	1.3	0.5	—	
mil	max	102	8.7	197	161	276	106	28	67	43	8	
	min	94	5.9	177	142	252	91	20	51	20	—	

印章说明 / Marking Instructions

Marking

Type number	Marking code
MB1S-10	10S1
MB2S-10	10S2
MB4S-10	10S4
MB6S-10	10S6
MB8S-10	10S8
MB10S-10	10S10



The diagram shows a rectangular component with four pins (two on top, two on bottom) and a semi-circular notch on the top edge. The marking code "10Sxx" is printed on the component's surface.

回流焊温度曲线图(无铅) / Temperature Profile for IR Reflow Soldering(Pb-Free)



说明：

- 1、预热温度 25 ~ 150°C，时间 60 ~ 90sec;
- 2、峰值温度 245±5°C，时间持续为 5±0.5sec;
- 3、焊接制程冷却速度为 2 ~ 10°C/sec.

Note:

- 1.Preheating:25~150°C, Time:60~90sec.
- 2.Peak Temp.:245±5°C, Duration:5±0.5sec.
3. Cooling Speed: 2~10°C/sec.

耐焊接热试验条件 / Resistance to Soldering Heat Test Conditions

温度：260±5°C

时间：10±1 sec.

Temp.:260±5°C

Time:10±1 sec

包装规格 / Packaging SPEC.

卷盘包装 / REEL

Package Type 封装形式	Units 包装数量					Dimension 包装尺寸 (unit: mm ³)		
	Units/Reel 只/卷盘	Reels/Inner Box 卷盘/盒	Units/Inner Box 只/盒	Inner Boxes/Outer Box 盒/箱	Units/Outer Box 只/箱	Reel	Inner Box 盒	Outer Box 箱
MBS	3000	2	6000	5	30000	13" ×15	336X336X40	345X345X235

使用说明 / Notices