

Industrial Microwave +
Plasma Systems



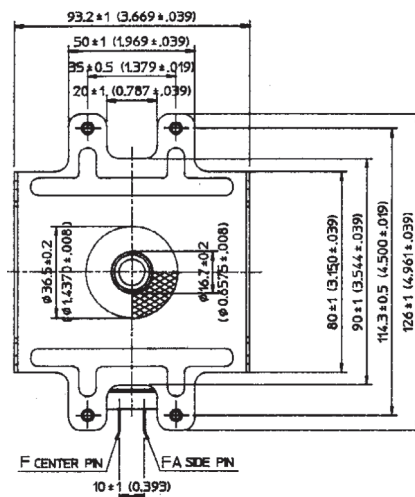
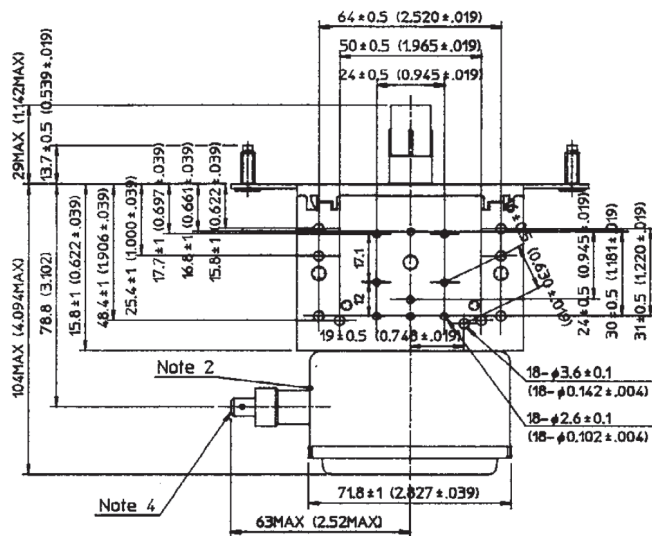
Magnetron MB2275A-110CZ

For industrial use, S-band (2450 MHz)

Features:

- 2450 MHz
- 900 W Power Output (matched load)
- Water-cooled anode
- Cooling connectors: 2 x hose sleeve 10 mm
- Packaged magnet
- Probe output

Tube Outline Dimensions (mm) (Basis type):

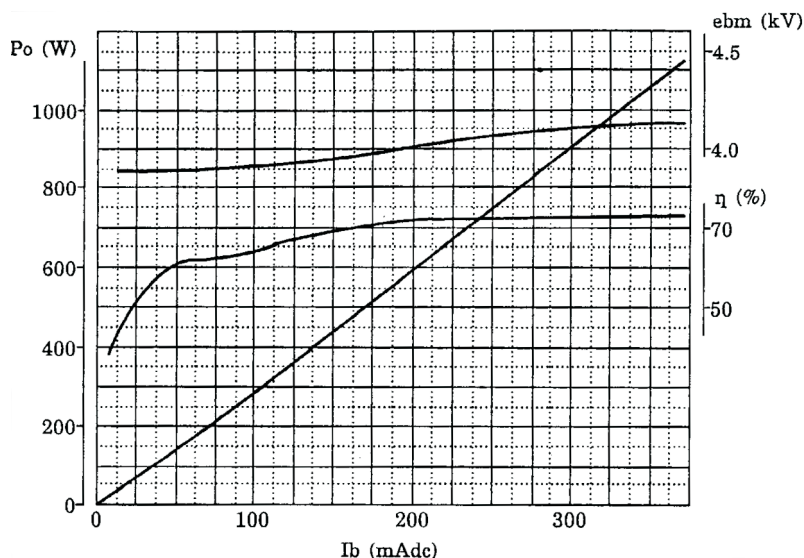


Magnetron MB2275A-110CZ

Industrial Microwave +
Plasma Systems



Performance Chart (Basis type):



Specifications:

Characteristic	Specification	Typical
Frequency of operation:	2445 MHz - 2465 MHz	2455 MHz
Frequency variations:		+/-10 MHz
CW power output :		900 W
Anode voltage:	3.9 kV - 4.3 kV	4.1 kV
Anode current:	max. 350 mA	300 mA
Filament voltage (standby):	2.8 V - 3.75 V	3.3 V
Filament current:	8 A – 12 A	10 A
RF launch type:	into rectangular waveguide or into oven cavity directly	
Basis type:	2M167B-M12	
Cooling		
Water-cooled:	2 l/min, 2 bar	
Net weight:		