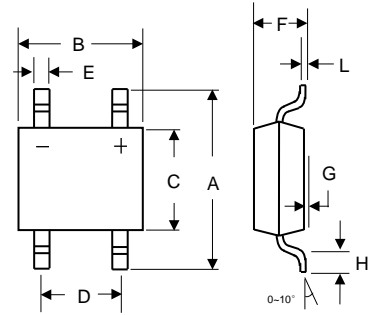


Features

- * Surge overload rating - 50 Amperes peak
- * Ideal for printed circuit board
- * Reliable low cost construction utilizing molded
- * Glass passivated device
- * Polarity symbols molded on body



RoHS
COMPLIANT



DIM	MBS			
	INCHES		MM	
	MIN	MAX	MIN	MAX
A	0.252	0.272	6.40	6.90
B	0.179	0.195	4.55	4.95
C	0.144	0.161	3.65	4.10
D	0.095	0.105	2.41	2.67
E	0.019	0.031	0.50	0.80
F	0.094	0.114	2.40	2.90
G	---	0.008	---	0.20
H	0.027	0.043	0.70	1.10
L	0.006	0.016	0.15	0.41

Mechanical Data

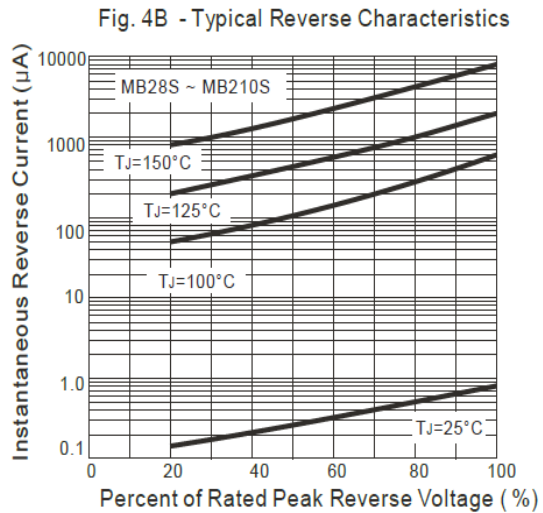
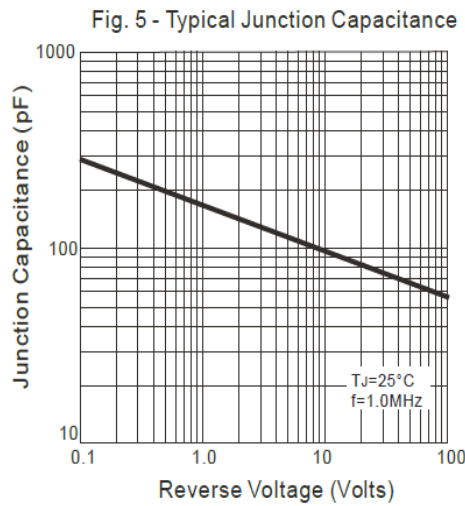
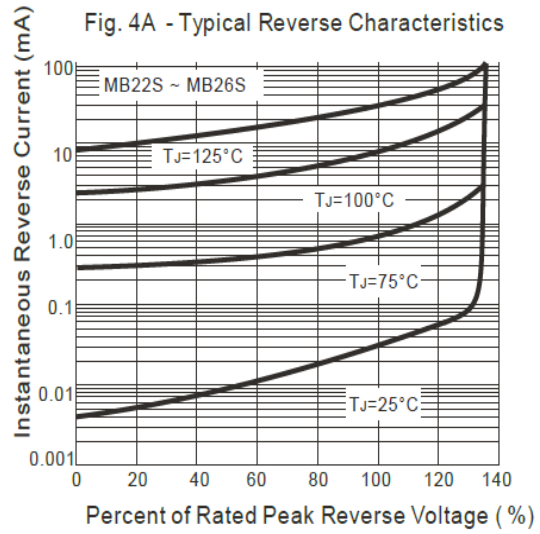
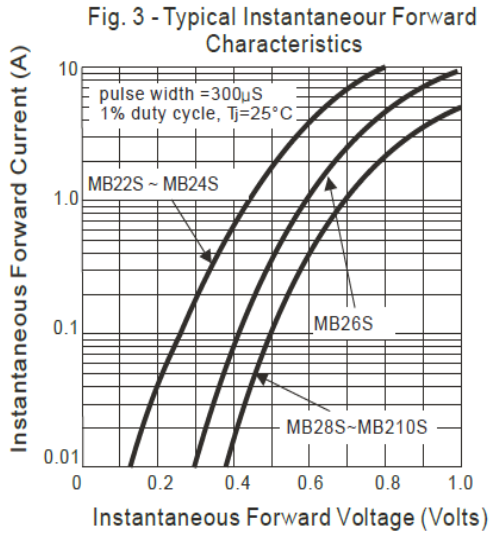
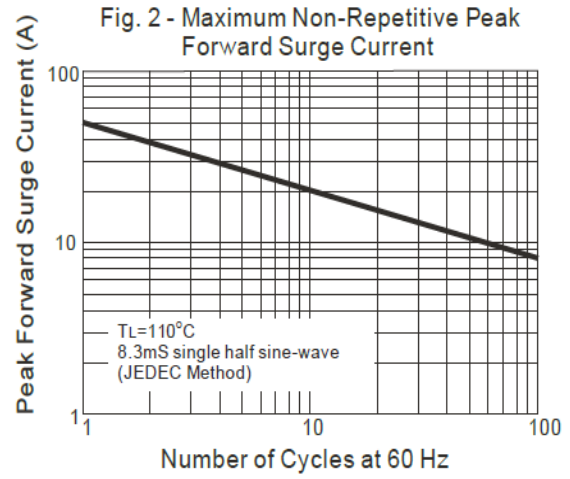
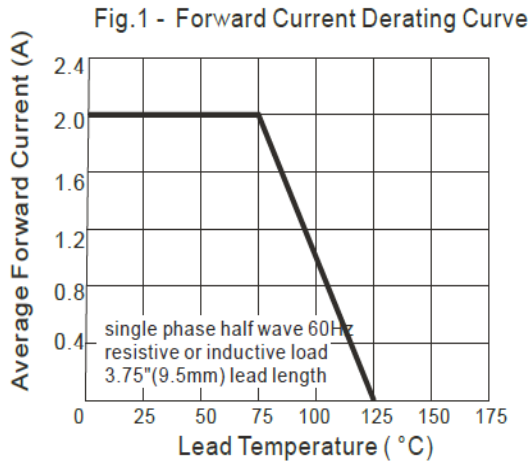
- * Case : MBS, Molded Plastic
- * Epoxy : Device has UL flammability classification 94V-0
- * Mounting Position : Any
- * Weight : 0.22 grams (approx.)
- * Marking : Type Number

Maximum Ratings and Electrical Characteristics (TA=25°C unless otherwise noted)

Parameter	Symbol	MB22S	MB24S	MB26S	MB28S	MB210S	Unit
Maximum repetitive peak reverse voltage	V _{RRM}	20	40	60	80	100	V
Maximum RMS voltage	V _{RMS}	14	28	42	56	70	V
Maximum DC blocking voltage	V _{DC}	20	40	60	80	100	V
Maximum average forward output current	I _{F(AV)}	2					A
Non-repetitive peak forward surge current 8.3ms single half sine-wave superimposed on rated load (JEDEC Method)	I _{FSM}	50					A
Maximum instantaneous forward voltage at 2.0A	V _F	0.5		0.7		0.85	V
Maximum DC reverse current at TA=25 °C rated DC blocking voltage per leg TA=100 °C	I _R	0.5 20					mA
Typical thermal resistance per leg(Note1)	R _{θJA}	88					°C/W
	R _{θJL}	28					
Operation junction temperature range	T _J	-55 to +150					°C
Storage temperature range	T _{STG}	-55 to +150					°C

Notes: 1. Thermal resistance from junction to ambient and from junction to lead P.C.B. mounted on 0.2x0.2"(5.0x5.0mm) copper pad areas

Ratings and Characteristic Curves





MB22S THRU MB210S

Surface Mount Schottky Bridge Rectifiers

Ordering Information

Part No.	Package	Packing Code	Packing
MB22S THRU MB210S	MBS	R30	3000pcs/Reel

Disclaimer

Specifications of the products displayed herein are subject to change without notice. JGD or anyone on its behalf, assumes no responsibility or liability for any errors in accuracies.

Information contained herein is intended to provide a product description only. No license, express or implied, to any intellectual property rights is granted by this document. Except as provided in JGD's terms and conditions of sale for such products, JGD assumes no liability whatsoever, and disclaims any express or implied warranty, relating to sale and/or use of JGD products including liability or warranties relating to fitness for a particular purpose, merchantability, or infringement of any patent, copyright, or other intellectual property right.

The products shown herein are not designed for use in medical, life-saving, or life-sustaining applications. Customers using or selling these products for use in such applications do so at their own risk and agree to fully indemnify JGD for any damages resulting from such improper use or sale.