

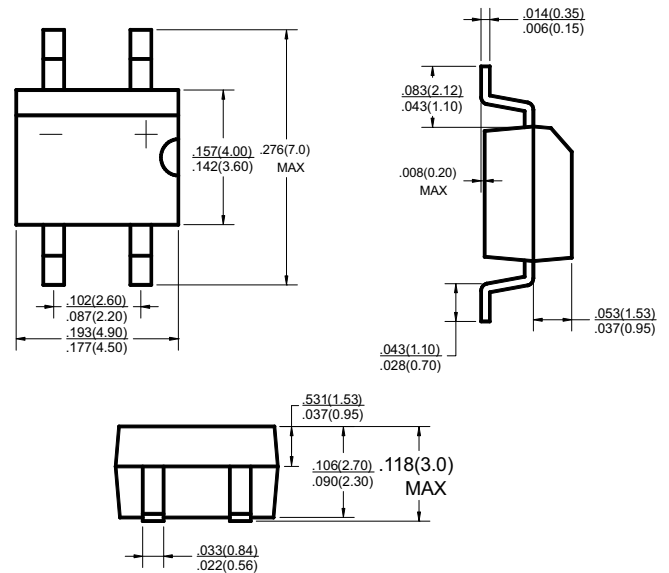
Glass Passivated Bridge Rectifiers
Voltage Range 100 to 1000 Volts
Current 0.8 / 1.0 Amperes

FEATURES

- UL Recognized File # E-230084
- Ideal for printed circuit board
- Low leakage results in inexpensive product
- High temperature soldering capability: 260°C/10 seconds/0.375" (9.5mm)
- Lead length at 5 lbs. (2.3kg) tension

MECHANICAL DATA

- Molded plastic body
- Solder plated leads
- Polarity: As marked



MBS

Dimensions in inches and(millimeters)

MAXIMUM RATINGS & ELECTRICAL CHARACTERISTICS

Rating at 25°C ambient temperature unless otherwise specified.
Single phase, half wave, 60Hz, resistive or inductive load.
For capacitive load, derate current by 20%

Parameter	Symbol	MB1S	MB2S	MB4S	MB6S	MB8S	MB10S	Unit
Maximum Repetitive Peak Reverse Voltage	V _{RRM}	100	200	400	600	800	1000	V
Maximum RMS Voltage	V _{RMS}	70	140	280	420	560	700	V
Maximum DC Blocking Voltage	V _{DC}	100	200	400	600	800	1000	V
Maximum Average Forward Rectified Current • On glass-epoxy • On aluminum substrate	I _(AV)	0.8 1.0						A
Peak Forward Surge Current 8.3ms Single Half Sine-Wave Superimposed on Rated Load (JEDEC Method)	I _{FSM}	35						A
I ² t for fusing (t < 8.3ms), non-repetitive	I ² t	5.1						A ² S
Maximum Instantaneous Forward Voltage (IFM = 4.0A)	V _F	1.05						V
Maximum DC Reverse Current @ T _A = 25°C At Rated DC Blocking Voltage per Leg @ T _A = 125°C	I _R	10 500						µA
Typical Thermal Resistance	R _{θJA}	85 (Note 1) 70 (Note 2)						°C/W
	R _{θJL}	20						
Operating Temperature Range	T _J	-55 to +150						°C
Storage Temperature Range	T _{STG}	-55 to +150						°C

NOTE: 1. On glass epoxy mounted on 0.05"x0.05" (1.3x1.3mm) pads
2. On aluminum substrate P.C.B.with an area of 0.8x0.8" (20x20mm) mounted on 0.05"X0.05" (1.3X1.3mm) solder pad.

RATING & CHARACTERISTIC CURVES

FIG.1- MAXIMUM FORWARD CURRENT DERATING CURVE

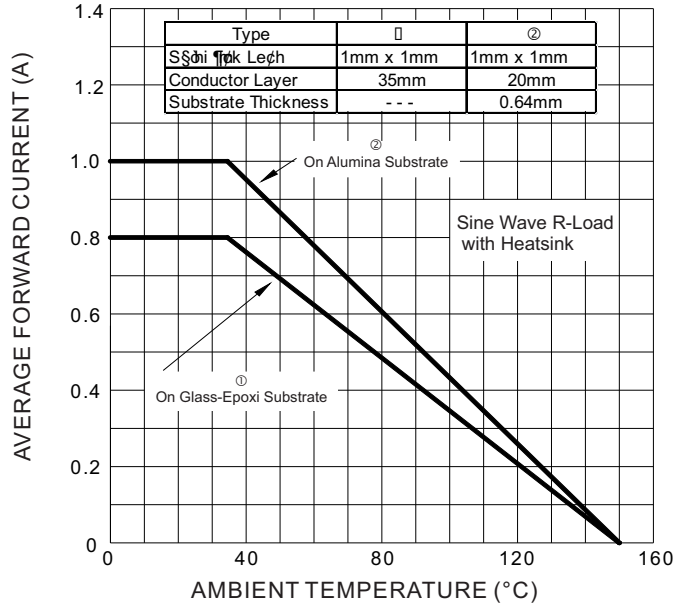


FIG.2- MAXIMUM NON-REPETITIVE FORWARD SURGE CURRENT

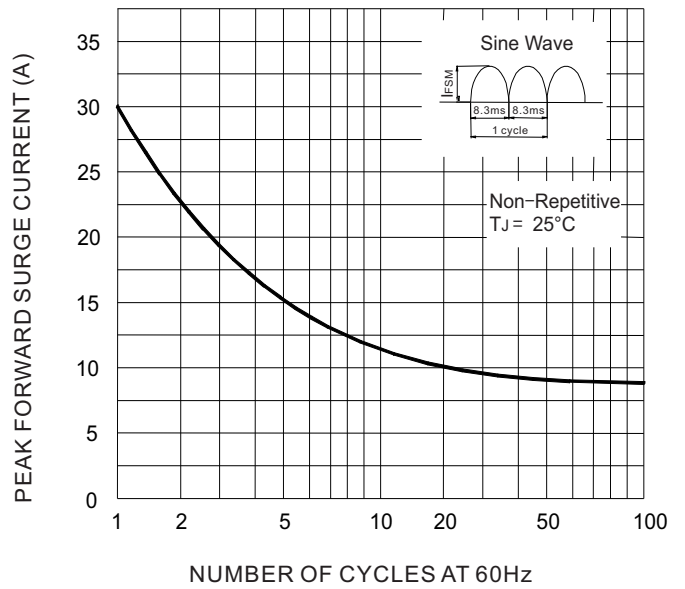


FIG.3-TYPICAL INSTANTANEOUS FORWARD CHARACTERISTICS

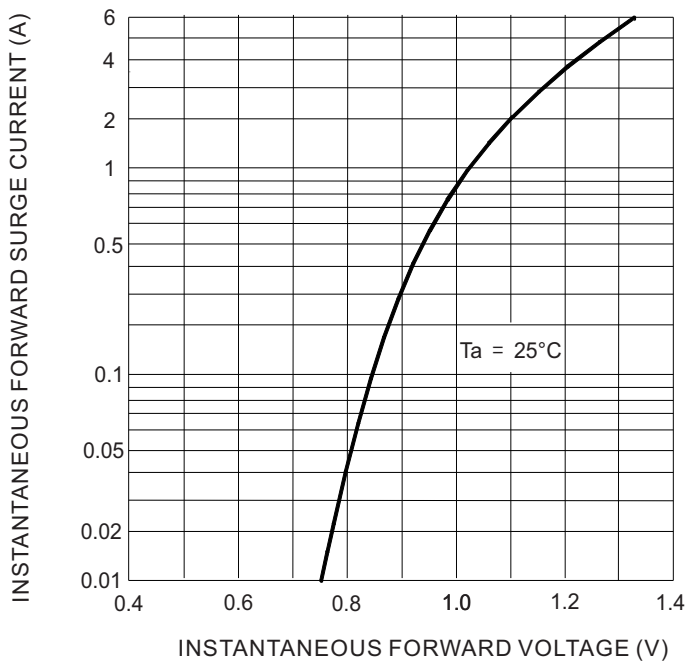


FIG.4-TYPICAL REVERSE CHARACTERISTICS

