

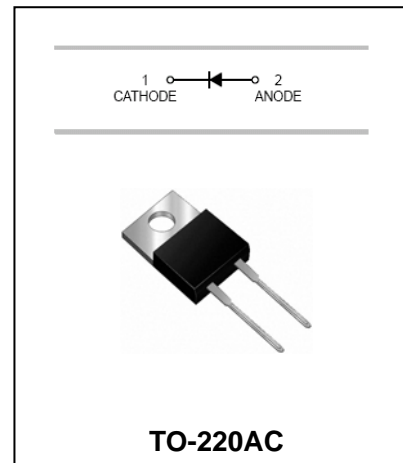


Schottky Barrier Rectifier

MBR20150--MBR20200

FEATURES

- Metal-Semiconductor Junction With Guard Ring.
- Epitaxial Construction.
- Low Forward Voltage Drop,Low Switching Losses.
- High Surge Capacity.
- For Use in Low Voltage,High Frequency Inverters Free Wheeling,and Polarity Protection Applications.



MAXIMUM RATING operating temperature range applies unless otherwise specified

Symbol	Parameter	MBR20150	MBR20200	Unit
V_{RRM}	Recurrent Peak Reverse Voltage	150	200	V
V_{RMS}	RMS Reverse Voltage	105	140	V
V_{DC}	DC Blocking Voltage	150	200	V
$I_{(AV)}$	Average Forward Total Device Rectified Current @ $T_A=100^{\circ}C$	20		A
I_{FSM}	Peak Forward Surge Current 8.3ms Single Half Sine-wave Superimosed on Rated Load	150		A
$R_{\theta JC}$	Typical Thermal Resistance Junction to Case (Note 1)	1.5		$^{\circ}C/W$
$T_j T_{stg}$	Operating Junction and Storage Temperature Range	-55 to +150		$^{\circ}C$

ELECTRICAL CHARACTERISTICS @ $T_a=25^{\circ}C$ unless otherwise specified

Parameter	Symbol	Test conditions	MBR20150	MBR20200	UNIT
			MAX		
Reverse Current	I_R	$V_R=V_{RRM}, T_A=25^{\circ}C$ $V_R=V_{RRM}, T_A=125^{\circ}C$	0.1 50		mA
Forward Voltage	V_F	$I_F=20A$	0.90	0.95	V



Schottky Barrier Rectifier

MBR20150--MBR20200

TYPICAL CHARACTERISTICS @ Ta=25°C unless otherwise specified

FIG.1 TYPICAL FORWARD CHARACTERISTICS

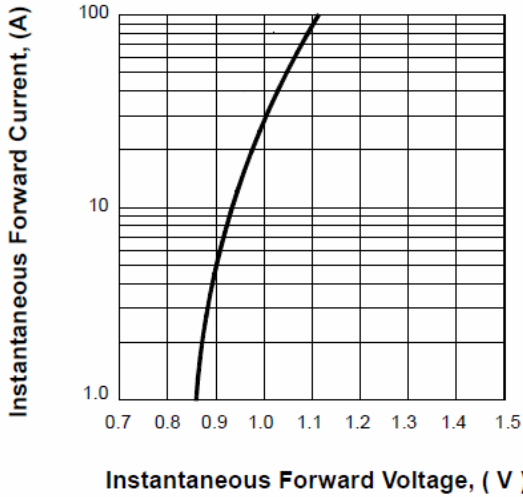


FIG.2 FORWARD DERATING CURVE

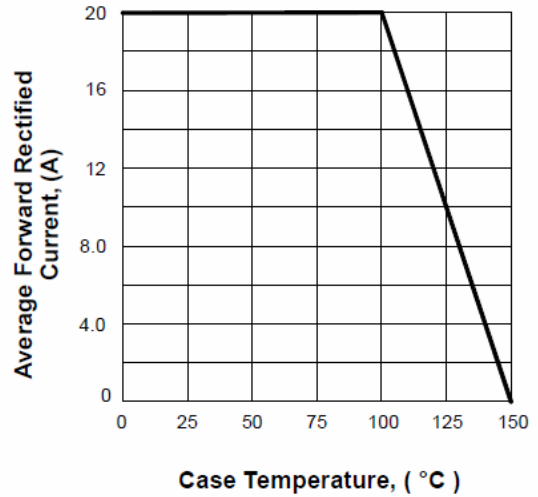


FIG.3 TYPICAL REVERSE CHARACTERISTICS

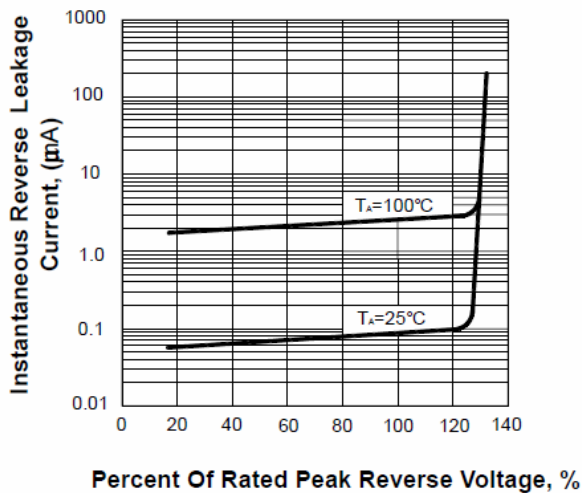
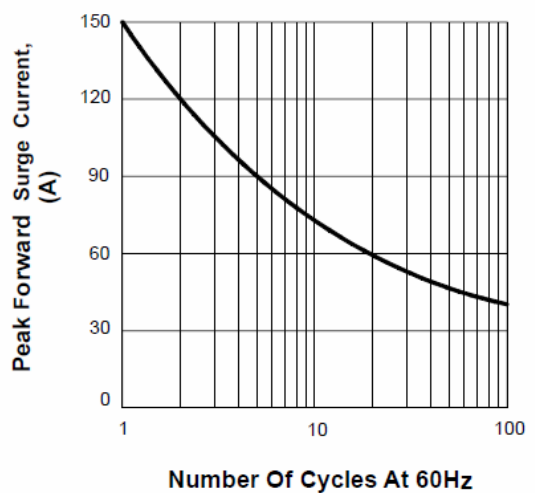


FIG.4 PEAK FORWARD SURGE CURRENT





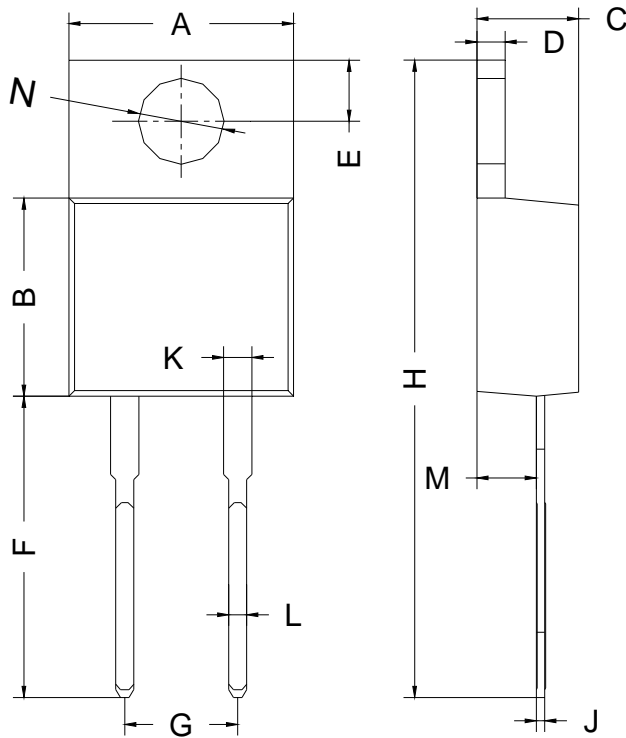
Schottky Barrier Rectifier

MBR20150--MBR20200

PACKAGE OUTLINE

Plastic surface mounted package

TO-220AC



TO-220AC		
Dim	Min	Max
A	9.80	10.30
B	8.70	9.10
C	4.57 Typical	
D	1.27 Typical	
E	2.64	2.84
F	13.14	13.74
G	4.98	5.18
H	28.03	28.83
J	0.38 Typical	
K	1.22	1.32
L	0.71	0.91
M	2.50 Typical	
N	3.86 Typical	
All Dimensions in mm		