



LOW VF SCHOTTKY DIODE MODULE TYPE 75A

Features

High Surge Capability

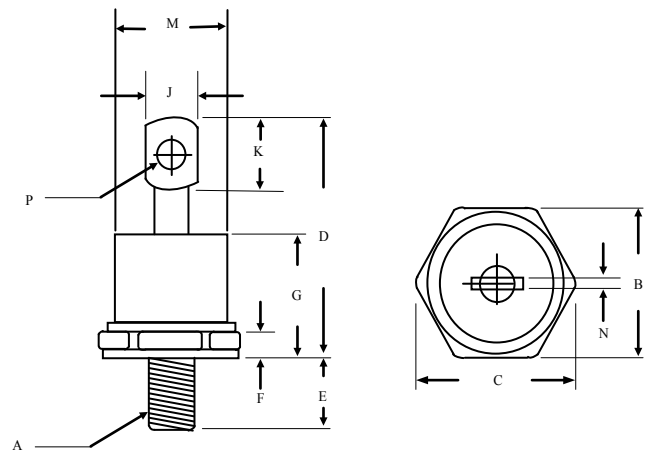
75Amp Rectifier
35Volts

Maximum Ratings

Operating Temperature: -40 °C to +100 °C
Storage Temperature: -40 °C to +150 °C

Part Number	Maximum Recurrent Peak Reverse Voltage	Maximum RMS Voltage	Maximum DC Blocking Voltage
MBR7535(R)L	35V	25V	35V

DO-5



Electrical Characteristics @ 25 °C Unless Otherwise Specified

Average Forward Current (Per pkg)	$I_{F(AV)}$	75A	$T_C=100\text{ }^\circ\text{C}$
Peak Forward Surge Current	I_{FSM}	1000A	8.3ms, half sine
Maximum Instantaneous Forward Voltage	V_F	0.60V	$I_{FM}=75\text{ A}; T_J=25\text{ }^\circ\text{C}$
Maximum Instantaneous Reverse Current At Rated DC Blocking Voltage	I_R	2.0 mA 150 mA	$T_J= 25\text{ }^\circ\text{C}$ $T_J = 100\text{ }^\circ\text{C}$
Maximum Thermal Resistance Junction To Case	$R_{\theta jc}$	0.50 °C/W	

1. Standard Polarity Stud is Cathode
2. Reverse Polarity: Stud is Anode

DIM	Inches		Millimeters	
	Min	Max	Min	Max
A	1/4 -28 UNF			
B	0.669	0.687	17.19	17.44
C	-----	0.794	-----	20.16
D	-----	1.020	-----	25.91
E	0.422	0.453	10.72	11.50
F	0.115	0.200	2.93	5.08
G	-----	0.460	-----	11.68
J	-----	0.280	-----	7.00
K	0.236	-----	6.00	-----
M	-----	0.589	-----	14.96
N	-----	0.063	-----	1.60
P	0.140	0.175	3.56	4.45

NOTE :

(1) Pulse Test: Pulse Width 300 μ sec. Duty Cycle < 2%



Figure .1- Typical Forward Characteristics

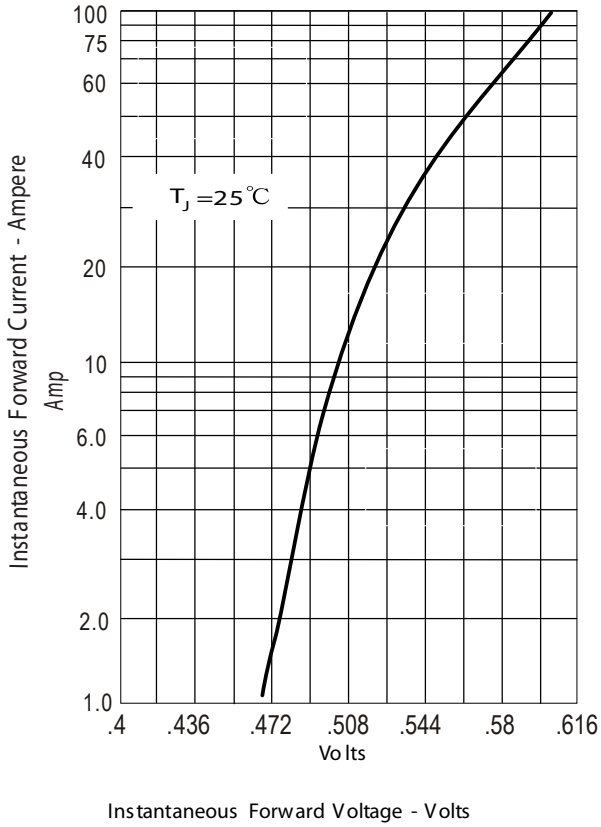


Figure .2- Forward Derating Curve

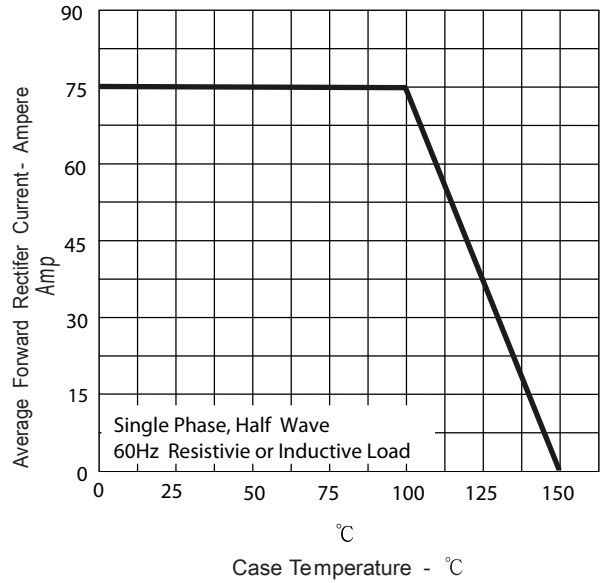


Figure .4- Typical Reverse Characteristics

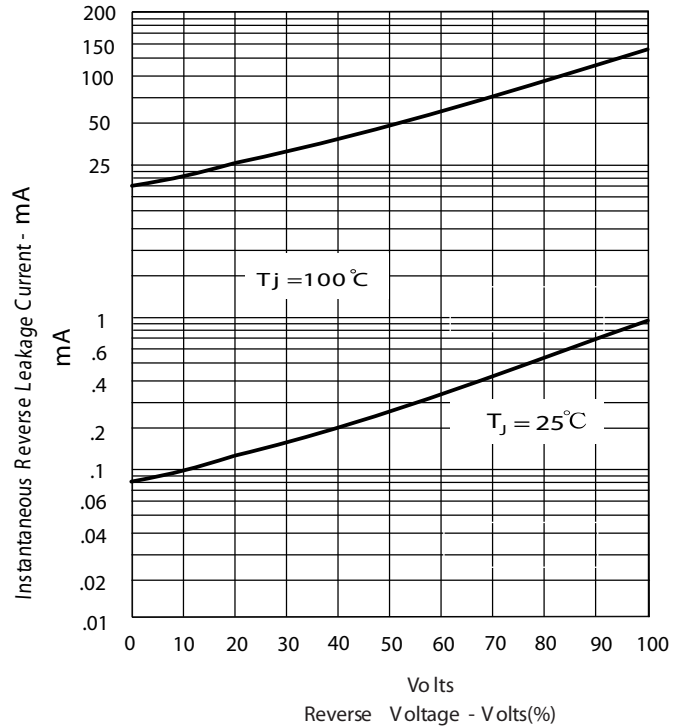


Figure.3-Peak Forward Surge Current

