

SURFACE MOUNT SCHOTTKY BARRIER RECTIFIERS

MBRX140L

FEATURES

- Low forward surge current
- Ideal for surface mounted applications
- High Surge Capability
- High Current Capability and Low Forward Voltage Drop
- For Use in Low Voltage, High Frequency inverters, Free Wheeling, and Polarity Protection Application



MECHANICAL DATA

- Case: JEDEC SOD-123FL, molded plastic over passivated chip
- Terminals: Solder Plated, solderable per MIL-STD-750, Method 2026
- Polarity: Color band denotes cathode end
- Weight: 0.0008 ounces, 0.022 gram
- Mounting position: Any

MAXIMUM RATINGS AND ELECTRICAL CHARACTERISTICS

Ratings at 25°C ambient temperature unless otherwise specified.

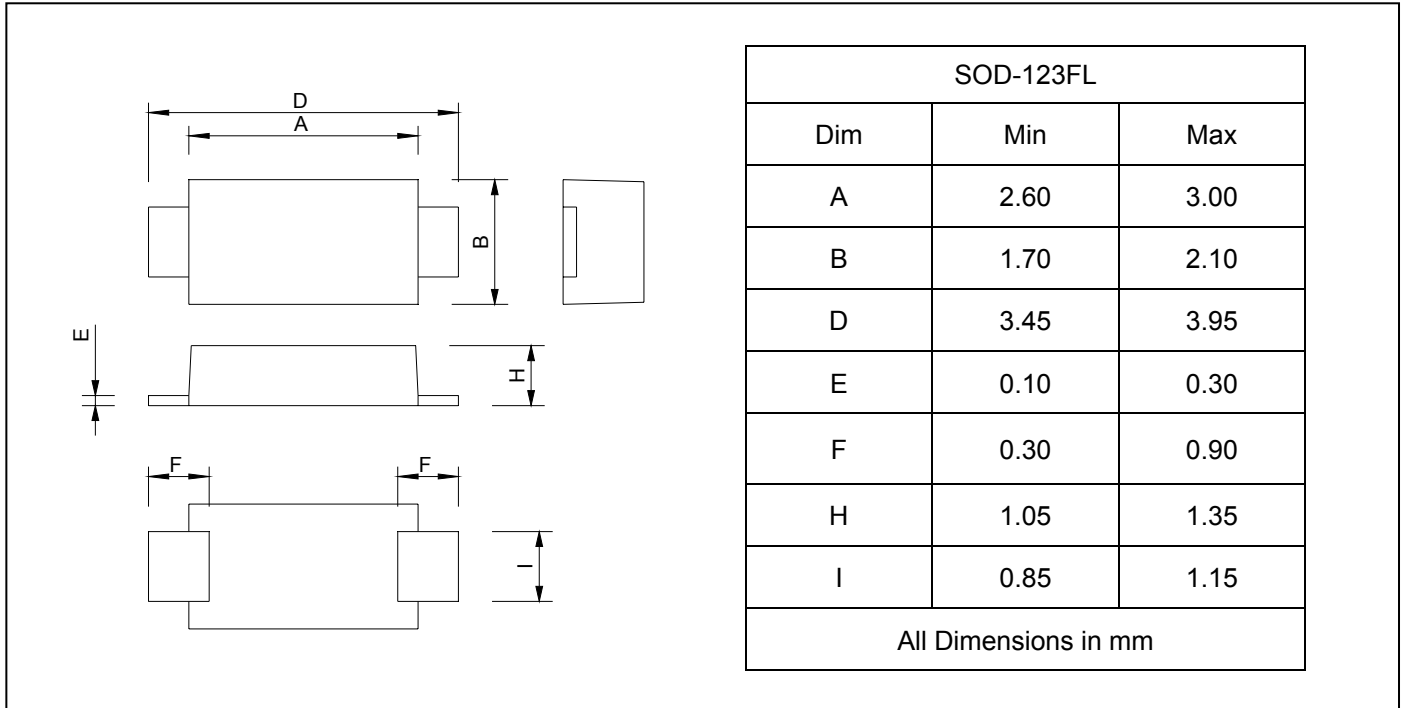
Single hase, half wave,60Hz,resistive or inductive load。 For capacitive load,derate current by 20%.

		MBRX140L	UNITS
Device marking code		L14	
Maximum repetitive peak reverse voltage	V_{RRM}	40	V
Maximum RMS voltage	V_{RWS}	28	V
Maximum DC blocking voltage	V_{DC}	40	V
Maximum average forward rectified current	$I_{F(AV)}$	1.0	A
Peak forward surge current 8.3ms single half-sine-wave	I_{FSM}	25	A
Maximum instantaneous forward voltage at $I_{FM}=1.0A$	V_F	0.45	V
Maximum DC reverse current at rated DC blocking voltage $T_J=25^\circ C$	I_R	1.0	mA
Maximum thermal resistance	$R_{\theta JA}$	222	$^\circ C/W$
Operating temperature range	T_J	- 55 --- + 125	$^\circ C$
Storage temperature range	T_{STG}	- 55 --- + 125	$^\circ C$

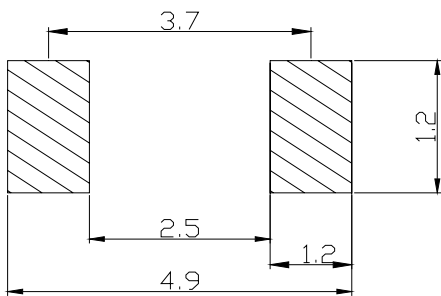
**SURFACE MOUNT SCHOTTKY
BARRIER RECTIFIERS**

MBRX140L

PACKAGE OUTLINE DIMENSIONS



SOLDERING FOOTPRINT



Unit : mm

PACKAGE INFORMATION

Device	Package	Shipping
MBRX140L	SOD-123FL	10000/Tape&Reel