

## SURFACE MOUNT SCHOTTKY BARRIER RECTIFIERS

**MBRX2200**

### FEATURES

- Low forward surge current
- Metal-Semiconductor junction with guard ring
- High surge capacity
- For use in low voltage, high frequency inverters free wheeling, and polarity protection applications
- Epitaxial construction



### MECHANICAL DATA

- Case: JEDEC SOD-123FL, molded plastic over passivated chip
- Terminals: Solder Plated, solderable per MIL-STD-750, Method 2026
- Polarity: As marked

### Maximum Ratings (@TA = 25°C unless otherwise specified)

Characteristic	Symbol	MBRX2200	UNITS
Device marking code		DS	
Maximum recurrent peak reverse voltage	$V_{RRM}$	200	V
Maximum RMS voltage	$V_{RMS}$	140	V
Maximum DC blocking voltage	$V_{DC}$	200	V
Maximum average forward rectified current $T_L=110^\circ\text{C}$	$I_{(AV)}$	2.0	A
Peak forward surge current 10ms single half-sine-wave superimposed on rated load	$I_{FSM}$	50	A

### Thermal Characteristics

Characteristic	Symbol	MBRX2200	UNITS
Operating temperature range	$T_J$	- 55 --- + 150	$^\circ\text{C}$
Storage temperature range	$T_{STG}$	- 55 --- + 150	$^\circ\text{C}$

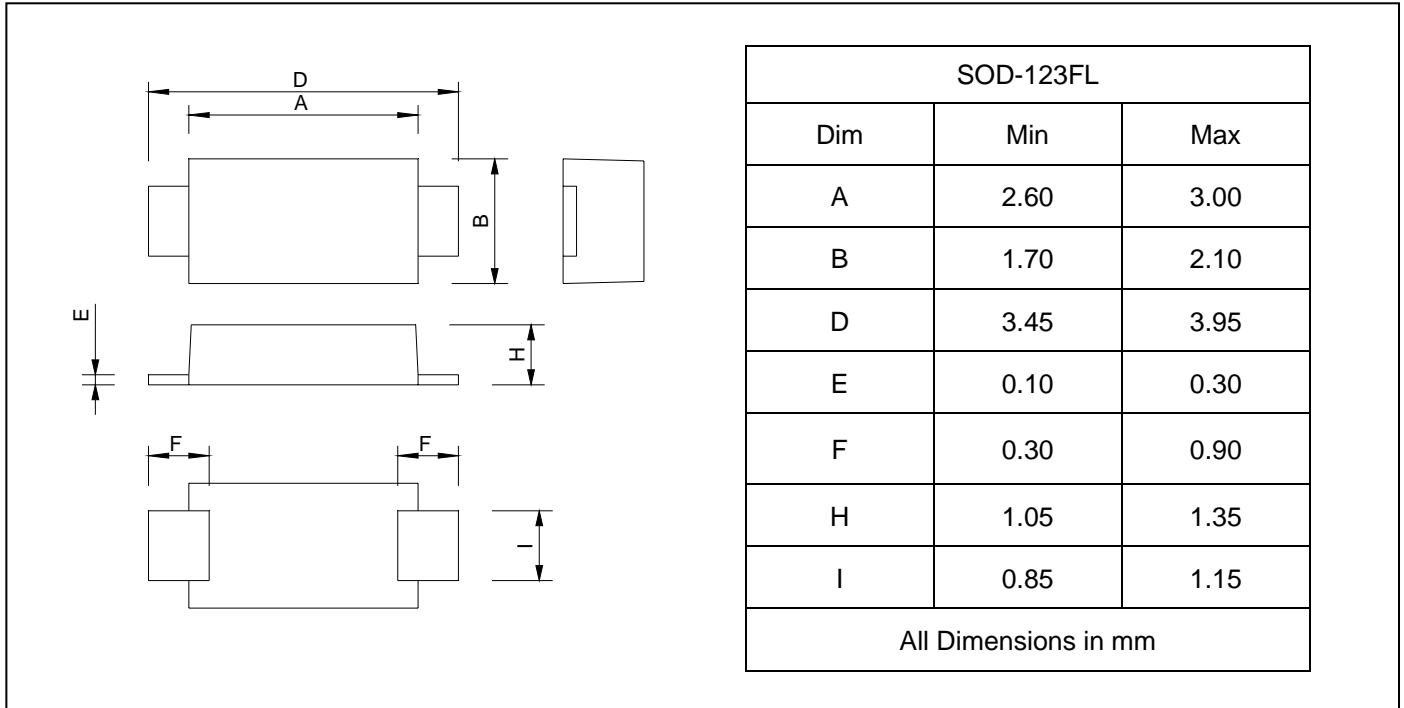
### Electrical Characteristics (@TA = 25°C unless otherwise specified)

Characteristic	Symbol	MBRX2200	UNITS
Maximum instantaneous @ $I_{FM}=2.0\text{A}$ forward voltage	$V_F$	0.95	V
Repetitive peak reverse current @ $T_A=25^\circ\text{C}$ at rated DC blocking voltage @ $T_A=100^\circ\text{C}$	$I_R$	0.5 10	m A

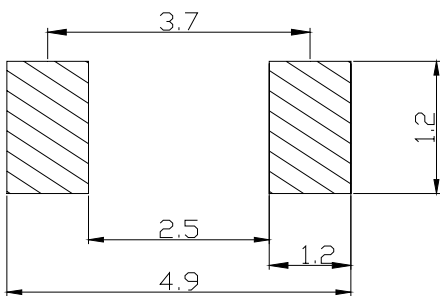
**SURFACE MOUNT SCHOTTKY  
BARRIER RECTIFIERS**

**MBRX2200**

**PACKAGE OUTLINE DIMENSIONS**



**SOLDERING FOOTPRINT**



Unit : mm

**PACKAGE INFORMATION**

Device	Package	Shipping
MBRX2200	SOD-123FL	10000/Tape&Reel