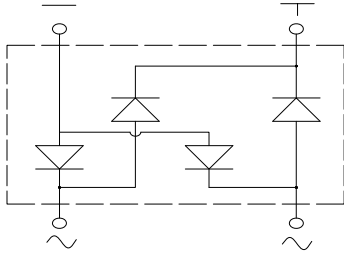
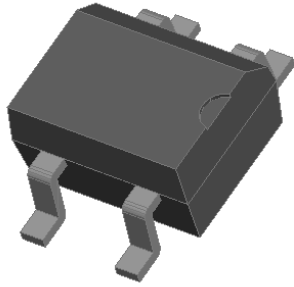


Bridge Rectifiers



Features

- UL recognition, file #E313149
- Ideal for automated placement
- High surge current capability
- Meets MSL level 1, per J-STD-020, LF maximum peak of 260 °C

Typical Applications

General purpose use in high frequency AC/DC bridge full wave rectification for power supply, lighting ballast, battery charger, home appliances, office equipment, and telecommunication applications.

Mechanical Data

- **Package:** MBS
Molding compound meets UL 94 V-0 flammability rating, RoHS-compliant
- **Terminals:** Tin plated leads, solderable per J-STD-002 and JESD22-B102
- **Polarity:** As marked on body

■ Maximum Ratings ($T_a=25^\circ\text{C}$ Unless otherwise specified)

PARAMETER	SYMBOL	UNIT	MBSK12S	MBSK14S	MBSK16S	MBSK18S	MBSK110S	MBSK115S	MBSK120S
Device marking code			MBSK12S	MBSK14S	MBSK16S	MBSK18S	MBSK110S	MBSK115S	MBSK120S
Repetitive peak reverse voltage	VRRM	V	20	40	60	80	100	150	200
Average rectified output current @60Hz Half-sine wave, Resistance load, T_a (FIG.1)	I_O	A	1.0						
Surge(non-repetitive)forward current @ 60Hz half-sine wave, 1 cycle, $T_j=25^\circ\text{C}$	IFSM	A	30						
Current squared time @ $1\text{ms} \leq t \leq 8.3\text{ms}$ $T_j=25^\circ\text{C}$, rating of per diode	I^2t	A^2S	3.7						
Storage temperature	T_{stg}	$^\circ\text{C}$	-55 ~ +150						
Junction temperature	T_j	$^\circ\text{C}$	-55 ~ +125			-55 ~ +150			

■ Electrical Characteristics ($T_a=25^\circ\text{C}$ Unless otherwise specified)

PARAMETER	SYMBOL	UNIT	TEST CONDITIONS	MBSK12S	MBSK14S	MBSK16S	MBSK18S	MBSK110S	MBSK115S	MBSK120S
Maximum instantaneous forward voltage drop per diode	V_F	V	IFM=0.5A	0.50		0.70	0.85		0.90	
Maximum DC reverse current at rated DC blocking voltage per diode @ $V_{RM}=V_{RRM}$	IRRM	uA	$T_a=25^\circ\text{C}$	500			100			
			$T_a=100^\circ\text{C}$	10000			5000			



MBSK12S THRU MBSK120S

■ Thermal Characteristics (T_a=25°C Unless otherwise specified)

PARAMETER		SYMBOL	UNIT	MBSK12S	MBSK14S	MBSK16S	MBSK18S	MBSK110S	MBSK115S	MBSK120S
Thermal Resistance	Between junction and ambient, On alumina substrate	R _{θJ-A}	°C/W	76.0						
	Between junction and ambient, On glass-epoxy substrate	R _{θJ-A}		134.0						
	Between junction and lead	R _{θJ-L}		20.0						

■ Ordering Information (Example)

PREFERED P/N	PACKING CODE	UNIT WEIGHT(g)	MINIIMUM PACKAGE(pcs)	INNER BOX QUANTITY(pcs)	OUTER CARTON QUANTITY(pcs)	DELIVERY MODE
MBSK12S-MBSK120S	F1	Approximate 0.12	2500	5000	40000	13' reel
MBSK12S-MBSK120S	F2	Approximate 0.12	3000	6000	48000	13' reel

■ Characteristics (Typical)

FIG1: I_o-T_a Curve

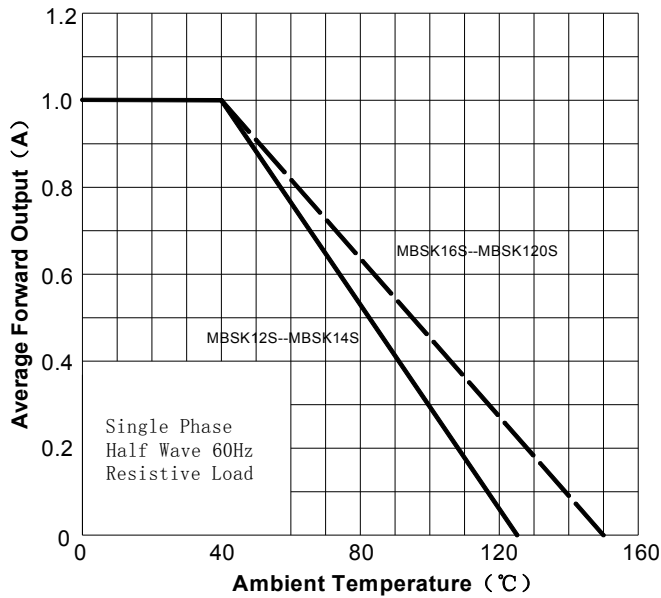


FIG2: Surge Forward Current Capability

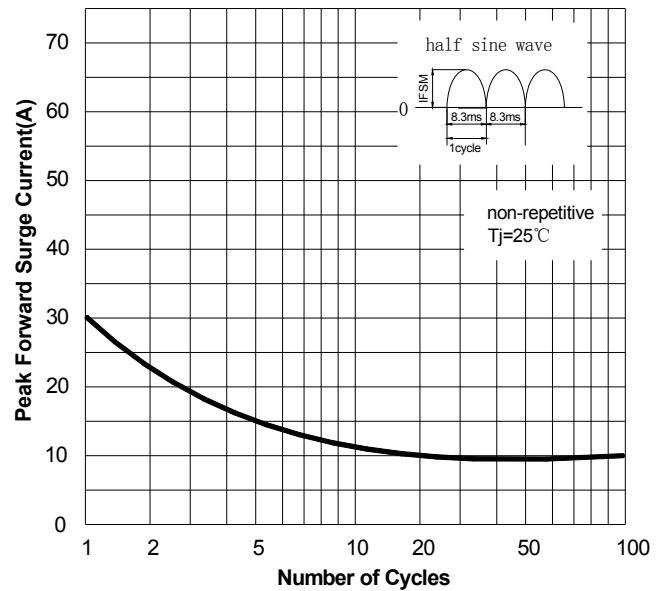


FIG3: Forward Voltage

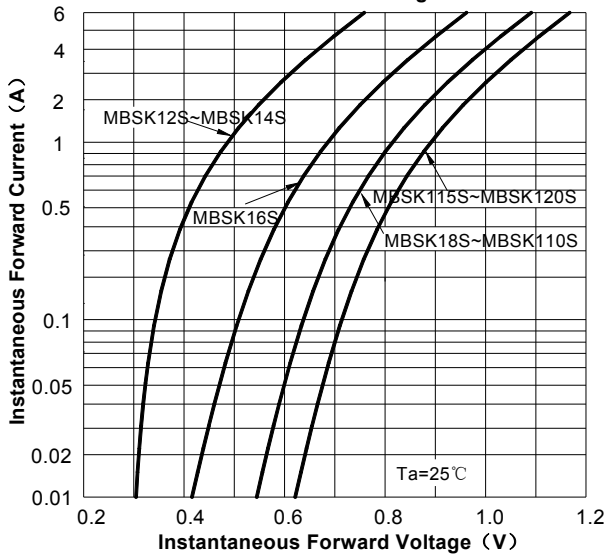
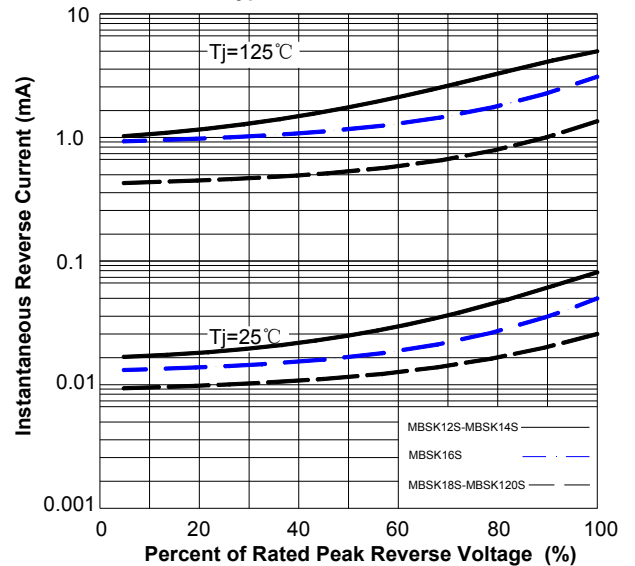


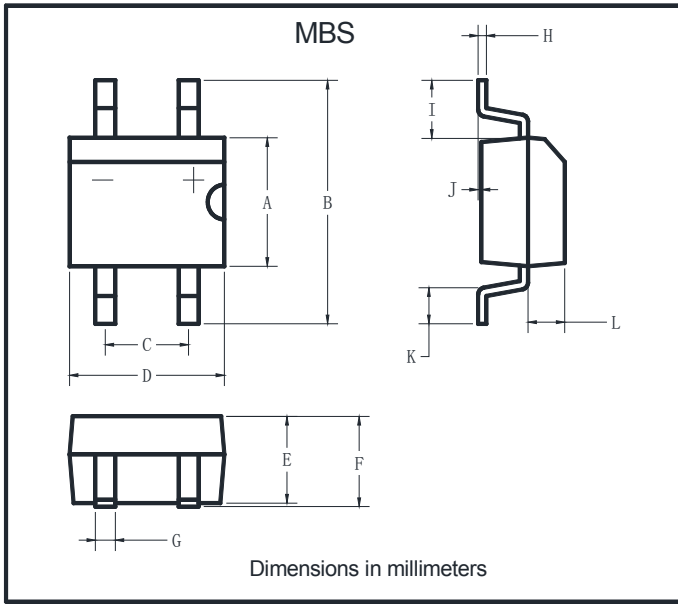
FIG4: Typical Reverse Characteristics





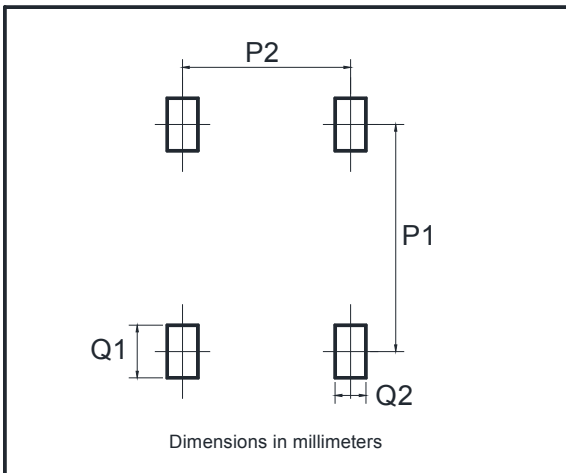
MBSK12S THRU MBSK120S

■ Outline Dimensions



MBS		
Dim	Min	Max
A	3.60	4.00
B	7.00 Max	
C	2.20	2.60
D	4.50	4.90
E	2.30	2.70
F	3.00 Max	
G	0.56	0.84
H	0.15	0.35
I	1.10	2.12
J	0.20 Max	
K	0.70	1.10
L	0.95	1.53

■ Suggested pad layout



Dim	Min
P1	6.00
P2	2.40
Q1	1.84
Q2	1.20



MBSK12S THRU MBSK120S

Disclaimer

The information presented in this document is for reference only. Yangzhou Yangjie Electronic Technology Co., Ltd. reserves the right to make changes without notice for the specification of the products displayed herein to improve reliability, function or design or otherwise.

The product listed herein is designed to be used with ordinary electronic equipment or devices, and not designed to be used with equipment or devices which require high level of reliability and the malfunction of which would directly endanger human life (such as medical instruments, transportation equipment, aerospace machinery, nuclear-reactor controllers, fuel controllers and other safety devices), Yangjie or anyone on its behalf, assumes no responsibility or liability for any damages resulting from such improper use of sale.

This publication supersedes & replaces all information previously supplied. For additional information, please visit our website [http:// www.21yangjie.com](http://www.21yangjie.com) , or consult your nearest Yangjie's sales office for further assistance.