



Micro Commercial Components

Micro Commercial Components
 20736 Marilla Street Chatsworth
 CA 91311
 Phone: (818) 701-4933
 Fax: (818) 701-4939

MC79L12BP

Features

- Internal Short Circuit Current Limiting
- Internal Thermal Overload Protection
- No External Components Required

Absolute Maximum Ratings

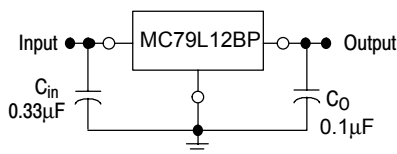
Parameter	Symbol	Value	Unit
Input Voltage	V_1	30	V
Operating Junction Temperature	T_{OPR}	-30---+75	°C
Storage Temperature Range	T_{STG}	-40---+125	°C

Electrical Characteristics ($V_i=19V, I_o=40mA, 0^\circ C < T_j < 125^\circ C, C_1=0.33\mu F, C_o=0.1\mu F$, unless otherwise specified)

Parameter	Sym	Min	Typ	Max	Test conditions
Output Voltage	V_o	11.5V	12.0V	12.5V	$V_i=19V, I_o=40mA$
Load Regulation	$V_o - I_o$		16mV	100mV	$I_o=1mA-100mA, V_i=19V$
Line regulation	$V_o - V_i$		36mV	250mV	$14.5V \leq V_i \leq 27V, I_o=40mA$
Quiescent Current	I_q		3.5mA	6.0mA	$V_i=19V, I_o=40mA$
Output Noise Voltage	V_N		210µV		$10Hz \leq f \leq 100KHz, V_i=19V, I_o=40mA$
Ripple Rejection	RR	37dB	64dB		$15V \leq V_i \leq 25V, I_o=40mA, f=120Hz, T_j=25^\circ C, e_{IN}=1V_{P-P}$

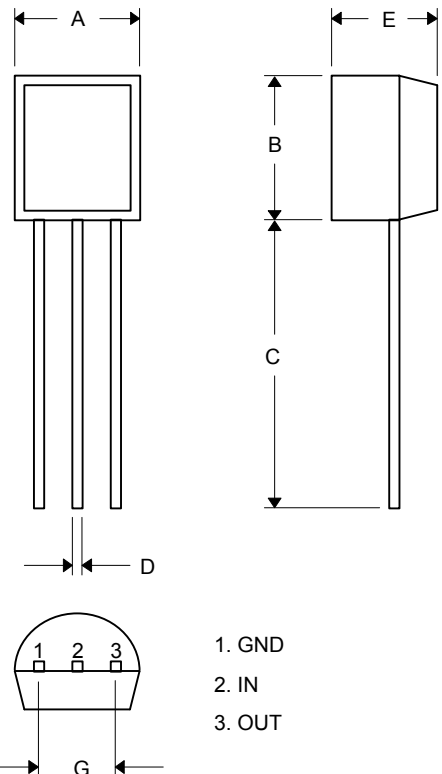
*Note: Bypass Capacitors are recommended for optimum stability and transient response and should be located as close as possible to the regulators

Typical Application:



Three-Terminal Low Current Negative Voltage Regulator

TO-92



DIM	INCHES		MM		NOTE
	MIN	MAX	MIN	MAX	
A	.175	.185	4.45	4.70	
B	.175	.185	4.46	4.70	
C	.500	---	12.7	---	
D	.016	.020	0.41	0.63	
E	.135	.145	3.43	3.68	
G	.095	.105	2.42	2.67	