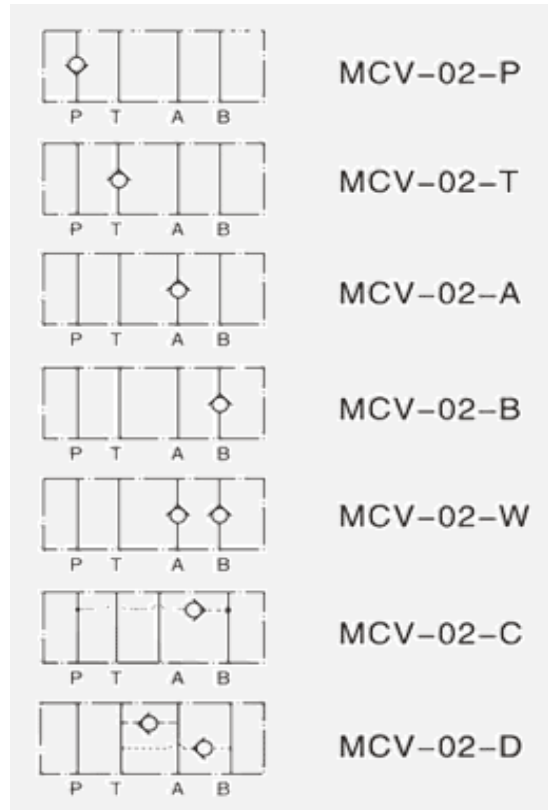


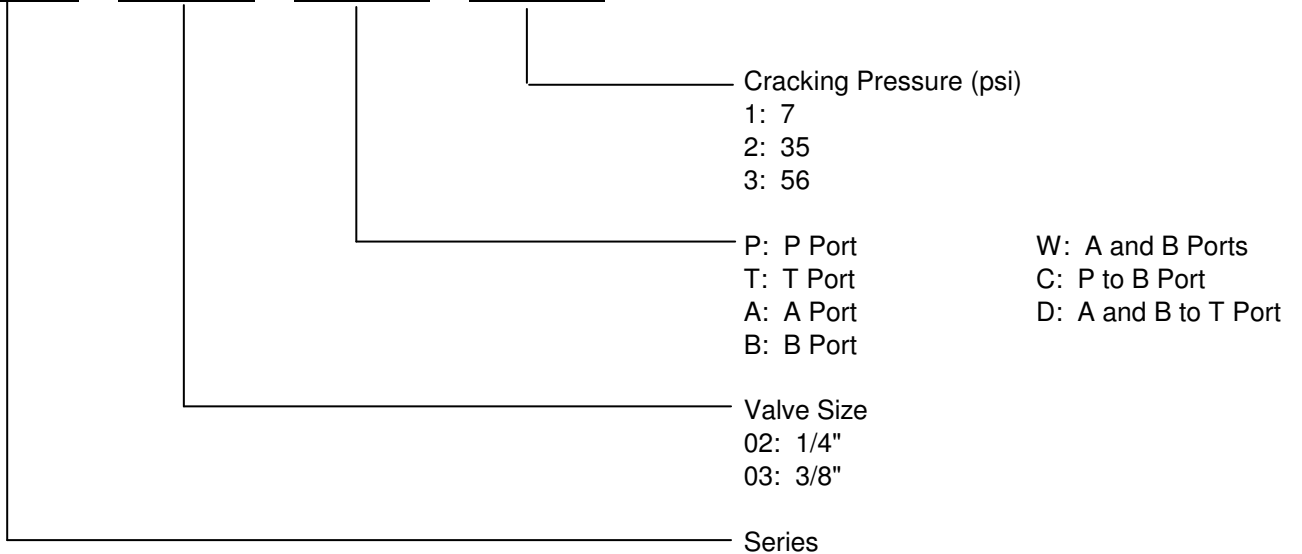
# MODULAR CHECK VALVES



MCV



MCV - 02 - P - 1

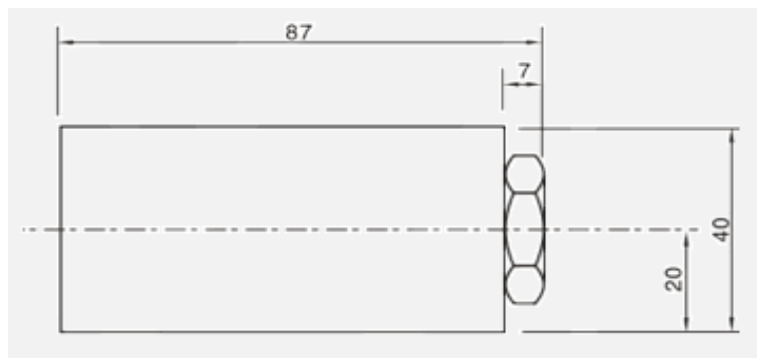
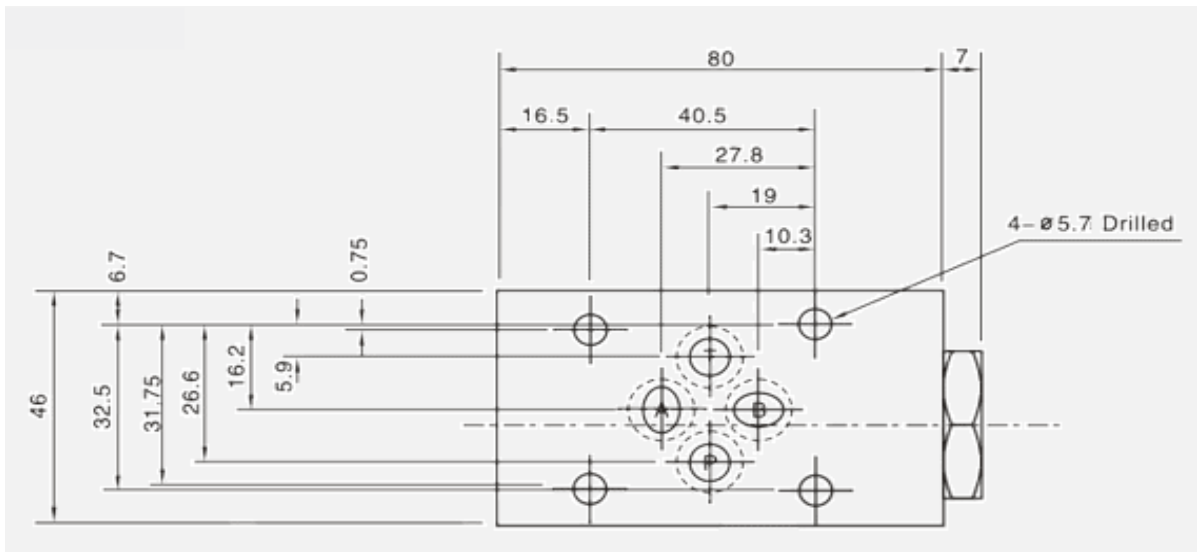


**Control Technologies International Limited**  
 (519) 823-4466  
[www.c-t-i.ca](http://www.c-t-i.ca)

## MODULAR CHECK VALVES

Model	Rated Pressure (psi)	Pressure Range	Rated Flow gpm (l/min)	Weight (lbs)
MCV-02	3000	1, 2, 3	10.5 (40)	2.5
MCV-03	3000	1, 2, 3	21 (80)	7.0

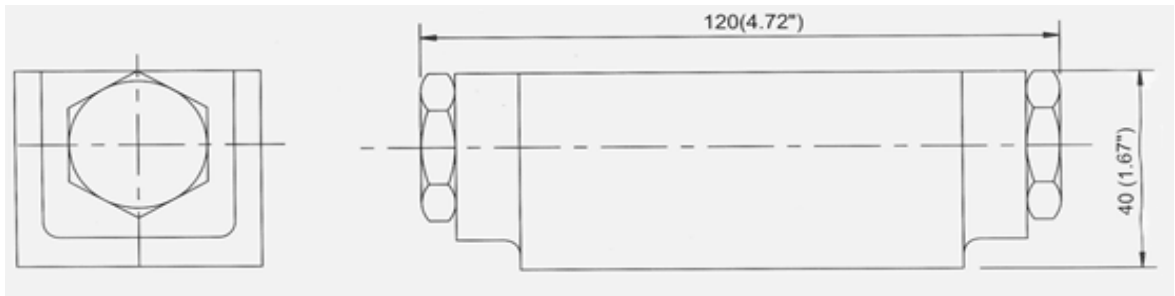
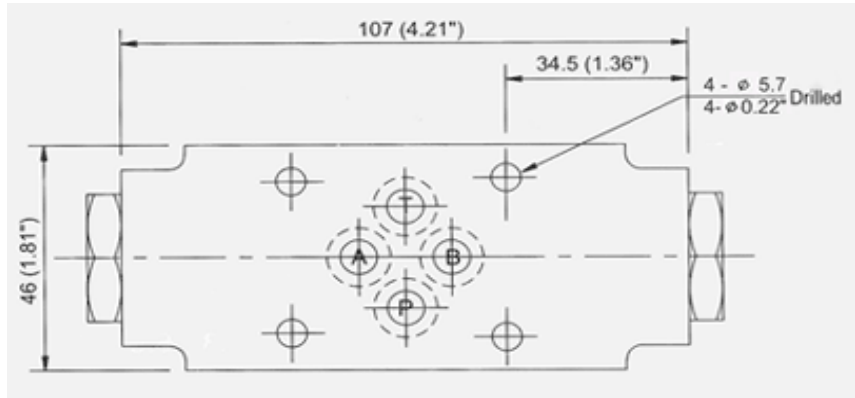
### MCV-02-P/A/B



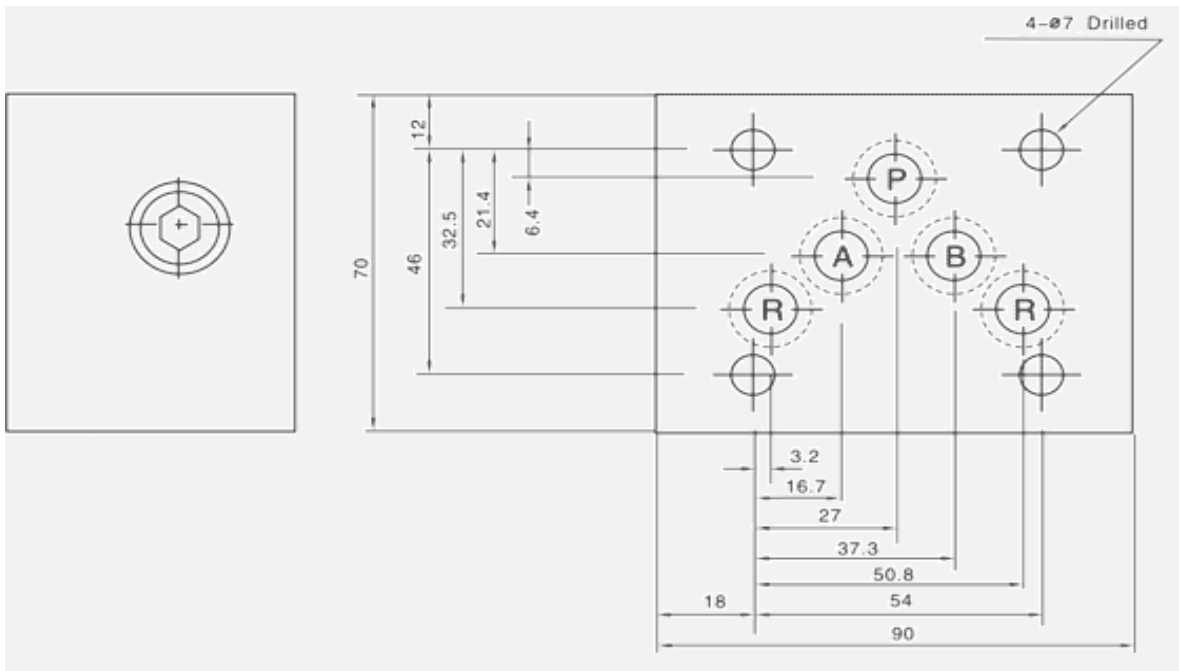
**Control Technologies International Limited**  
 (519) 823-4466  
[www.c-t-i.ca](http://www.c-t-i.ca)

# MODULAR CHECK VALVES

## MCV-02-W



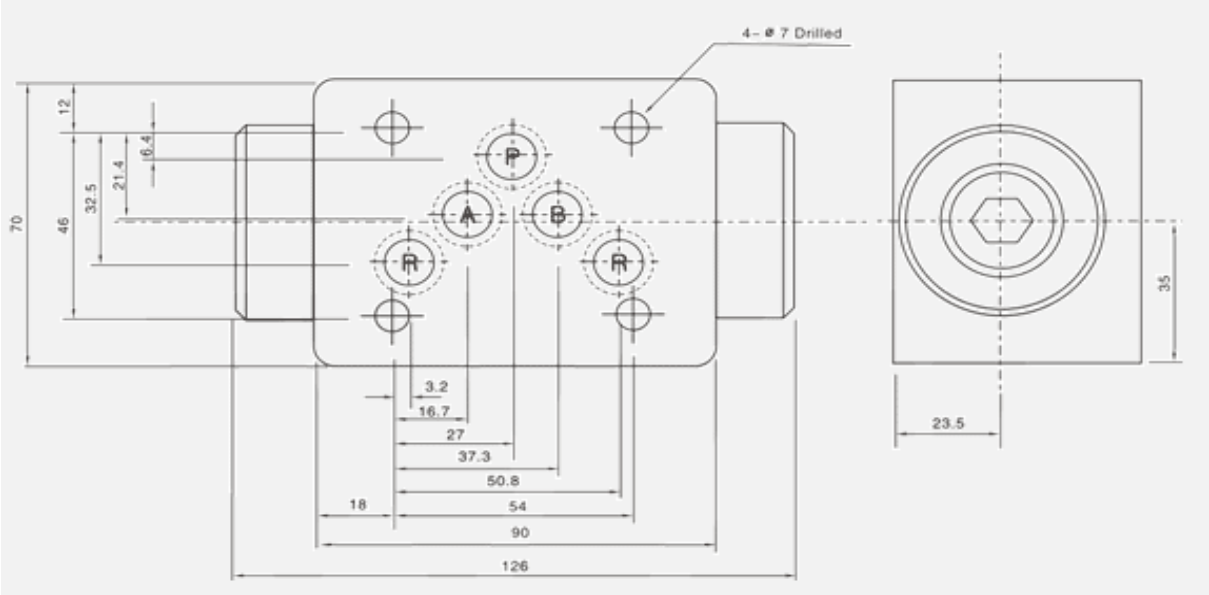
## MCV-03-P



Control Technologies International Limited  
(519) 823-4466  
[www.c-t-i.ca](http://www.c-t-i.ca)

MODULAR CHECK VALVES

MCV-03-W/A/B



Control Technologies International Limited  
(519) 823-4466  
[www.c-t-i.ca](http://www.c-t-i.ca)