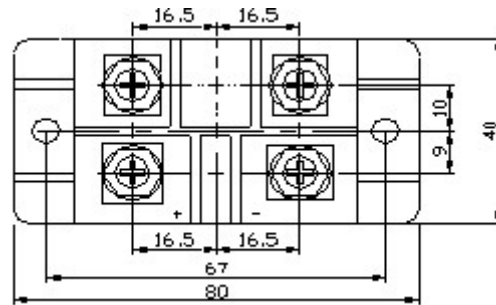
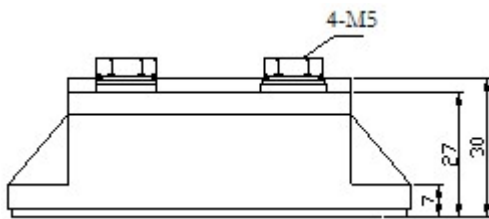
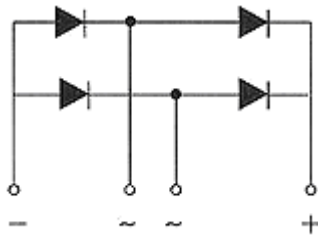


# Single Phase Rectifier Bridge

 $I_{dAV} = 100 \text{ A}$ 
 $V_{RRM} = 1000-2400\text{V}$ 

$V_{RRM}$ (V)	$V_{RSM}$ (V)	TYPE
1000	1100	MDQ100-10
1200	1300	MDQ100-12
1600	1700	MDQ100-16
1800	1900	MDQ100-18
2200	2300	MDQ100-22
2400	2500	MDQ100-24



## Maximum Ratings

Symbol	Item	Conditions	Ratings	Unit
$I_D$	Output current (D.C.)	Single phase. full wave. $T_c=117^\circ\text{C}$	100	A
$I_{FSM}$	Surge Forward Current	1 cycle, 50/60Hz, peak value, non-repetitive	910/1000	A
$I_t^2$	$I_t^2$	Value for one cycle of surge current	4100	$\text{A}^2\text{S}$
$T_j$	Junction Temperature		-40 to +150	$^\circ\text{C}$
$T_{stg}$	Storage Temperature		-40 to +125	$^\circ\text{C}$
$V_{iso}$	Isolation Breakdown Voltage (R.M.S.)	Main Terminal to case 1minute	2500	V



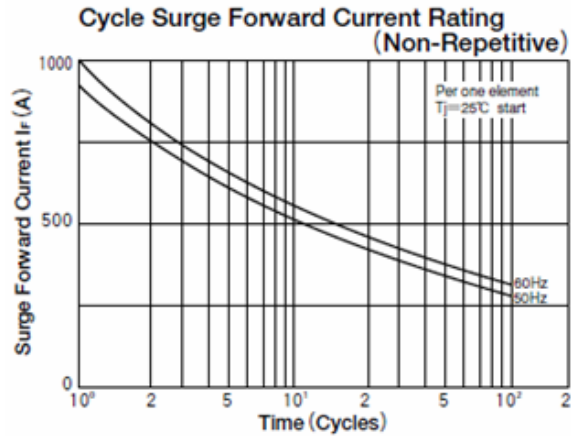
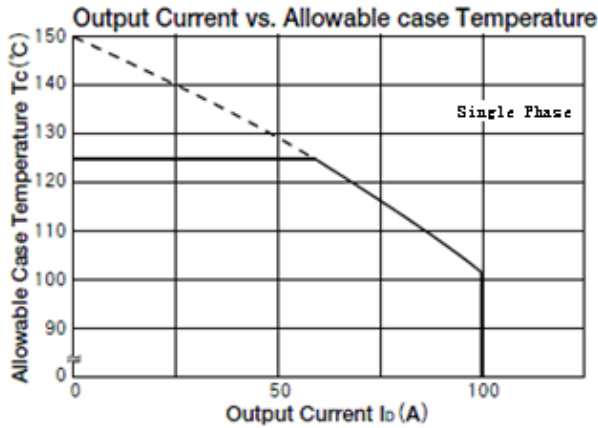
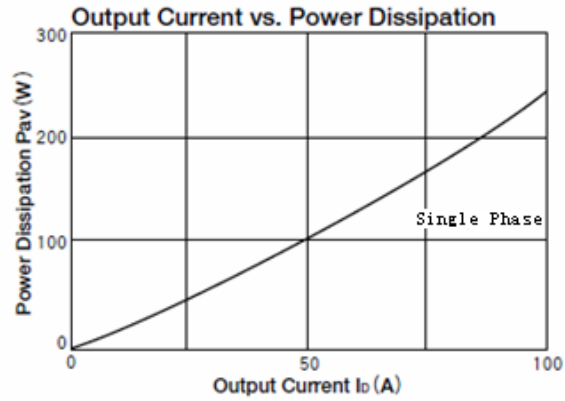
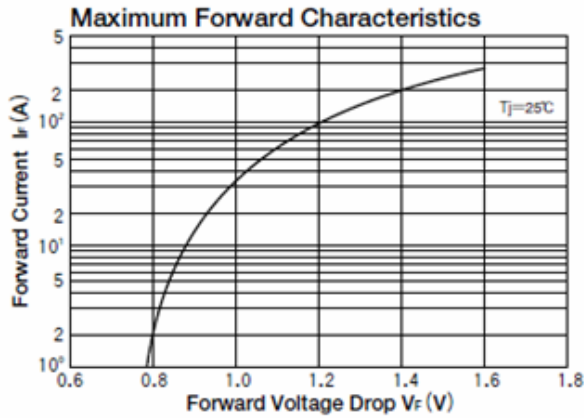
®

Tel: +86-514-87782298, 87782296    FAX: +86-514-87782297, 87367519  
 E-mail : [positioning@china.com](mailto:positioning@china.com); [yzforever@vip.tom.com](mailto:yzforever@vip.tom.com); [yzpst@pst888.com](mailto:yzpst@pst888.com)  
 WEB SITE: <http://www.pst888.com>    [www.yzpst.cc](http://www.yzpst.cc)

M <sub>d</sub>	Mounting torque	Mounting(M6)	Recommended Value 2.5-3.9 (25-40)	4.7 (48)	N□m(kgf□cm)
		Terminal (M5)	Recommended Value 1.5-2.5 (15-25)	2.7 (28)	

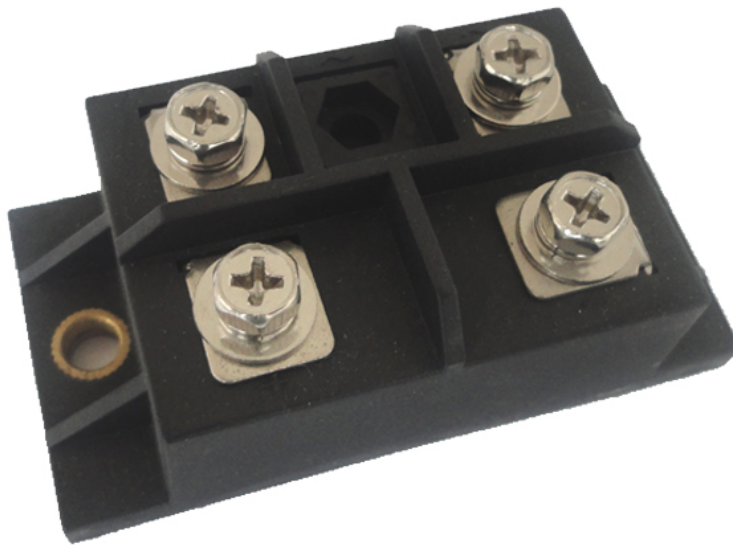
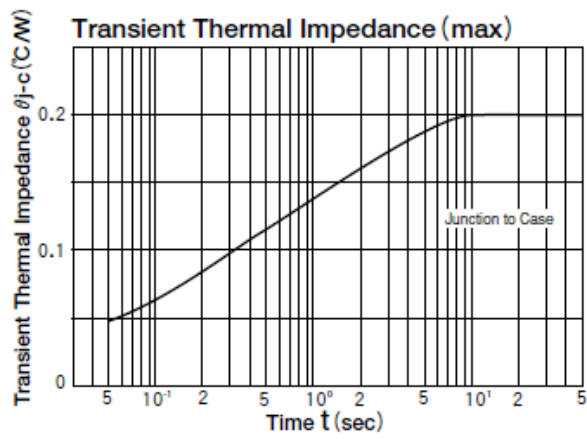
## Electrical Characteristics

Symbol	Item	Conditions	Ratings	Unit
I <sub>RRM</sub>	Repetitive Peak Reverse Current, max.	T <sub>j</sub> =150 °C at V <sub>RRM</sub>	5.0	mA
V <sub>FM</sub>	Forward Voltage Drop, max.	I <sub>FM</sub> =100A, T <sub>j</sub> =25 °C Inst. measurement	1.2	V
R <sub>th(j-c)</sub>	Thermal Impedance, max.	Junction to case	0.2	°C/W



®

Tel: +86-514-87782298, 87782296    FAX: +86-514-87782297, 87367519  
 E-mail : [positioning@china.com](mailto:positioning@china.com); [yzforever@vip.tom.com](mailto:yzforever@vip.tom.com); [yzpst@pst888.com](mailto:yzpst@pst888.com)  
 WEB SITE: <http://www.pst888.com>    [www.yzpst.cc](http://www.yzpst.cc)



®

Tel: +86-514-87782298, 87782296    FAX: +86-514-87782297, 87367519  
 E-mail: [positioning@china.com](mailto:positioning@china.com); [yzforever@vip.tom.com](mailto:yzforever@vip.tom.com); [yzpst@pst888.com](mailto:yzpst@pst888.com)  
 WEB SITE: <http://www.pst888.com>    [www.yzpst.cc](http://www.yzpst.cc)