

**MDR050B**

ISM915 (900MHz Digital Cordless)

**Characteristics**

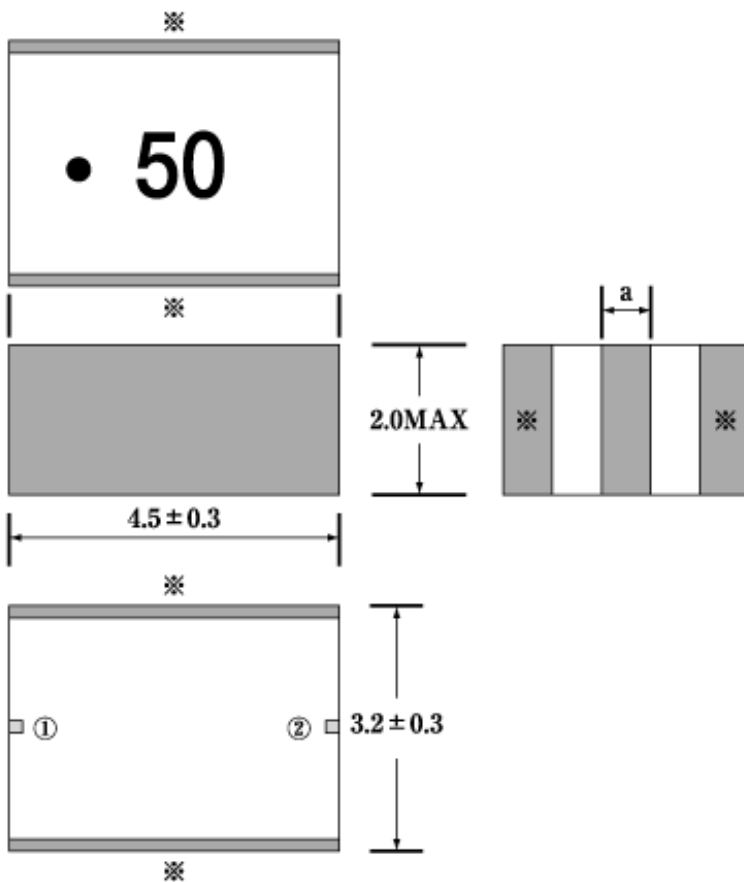
<b>MDR050B</b>	
Zin/Zout	50 ohm Nominal
Fc	915MHz Nominal
Pass Band	902-928MHz
Insertion Loss	2.6 dB max (902-928MHz at 25 Deg.C)
	2.9 dB max (902-928MHz at -40 up to +85 Deg.C)
Ripple	1.5 dB max (902-928MHz)
V.S.W.R	2.0 max (902-928MHz)
Attenuation	17 dB min (at 837.5MHz)
	7 dB min (at 992.5MHz)

**Number of ordered pieces**

1000pcs/Reel

**Dimensions**

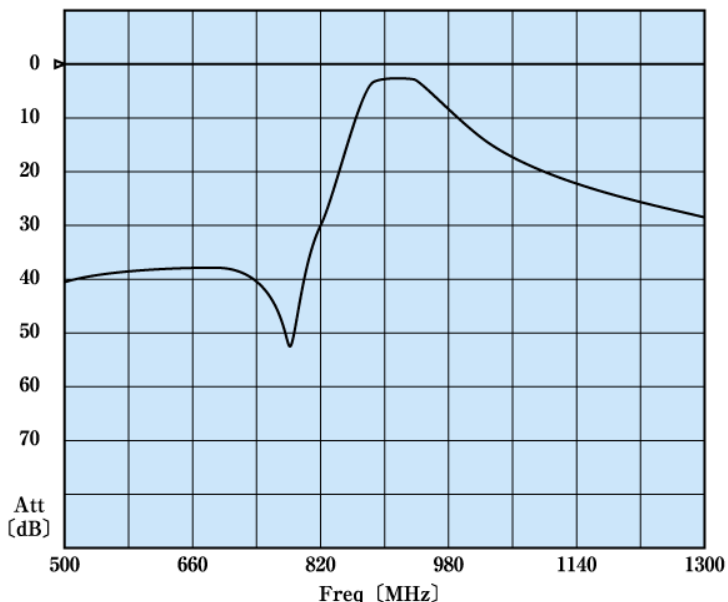
Dimension (Unit : mm)



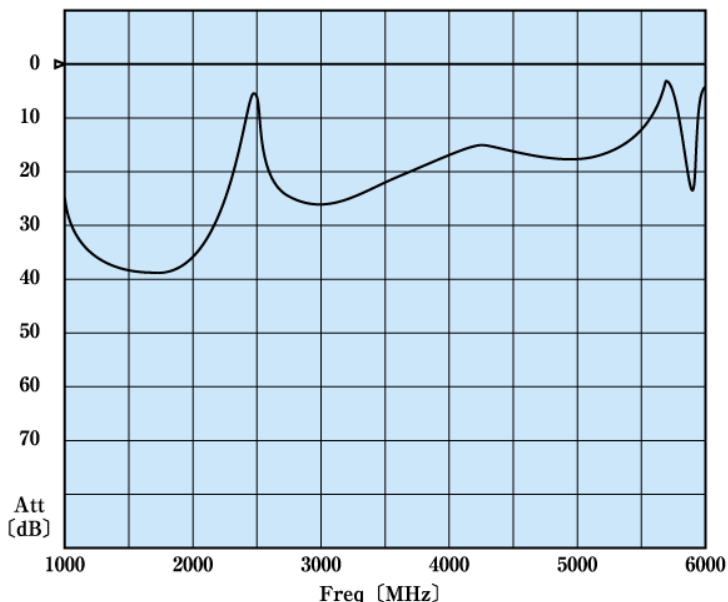
Terminal	
①	Input
②	Output
※	GND

$a=0.6 \pm 0.3$

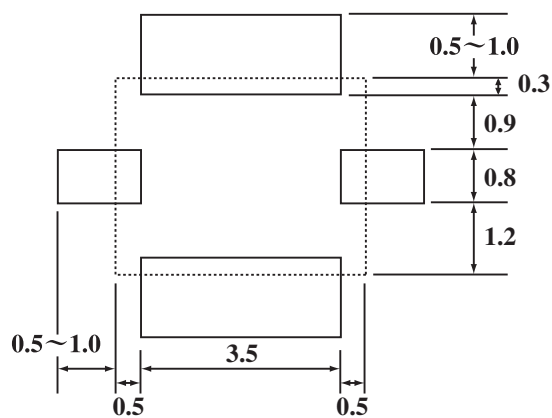
**Frequency Data1**



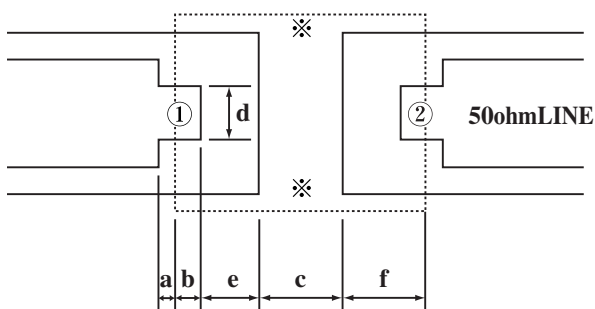
**Frequency Data2**



**Resist pattern**



**Land pattern**

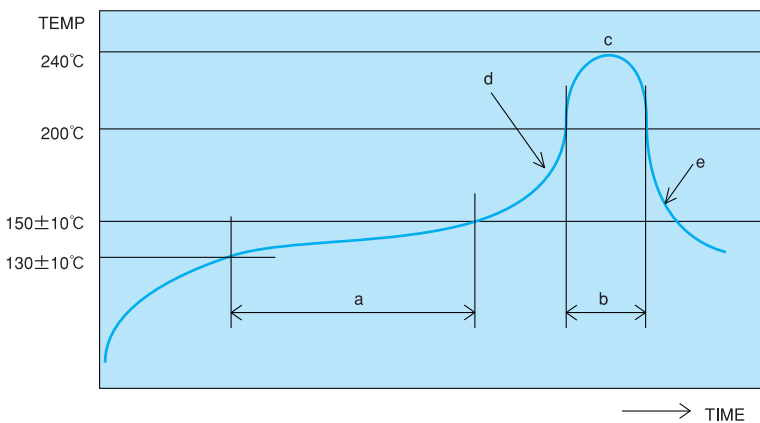


Terminal	
①	Input
②	Output
※	GND

- a=0.2
- b=0.3
- c=1.4
- d=0.6
- e=1.25
- f=1.55
- (Unit : mm)

**Example : t=1.0mm  
Glass-epoxy board**

**Reflow-soldering conditions(For reference)**

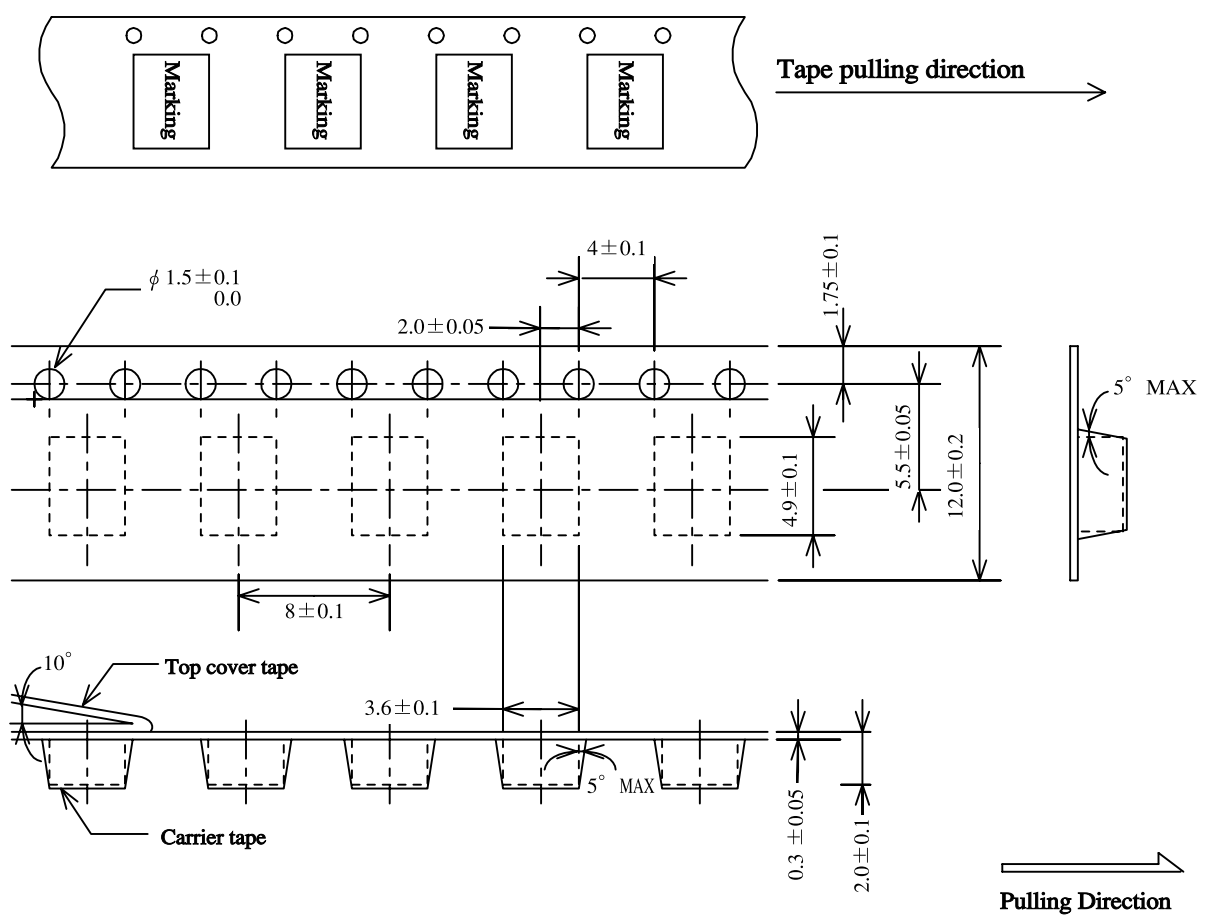


High temperature reflow-soldering conditions

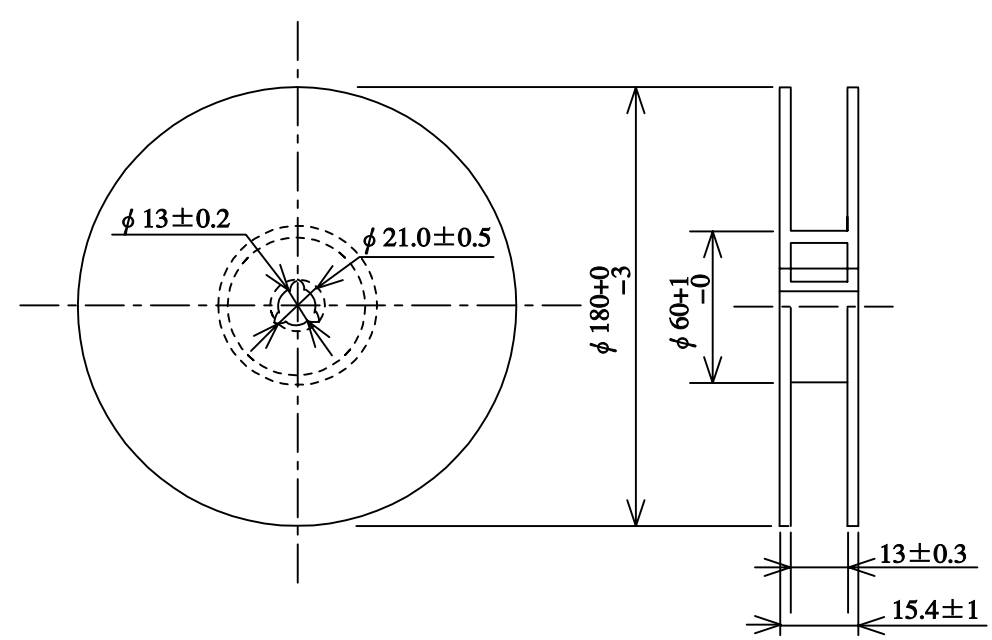
(No more than 2 flows allowed)

- a:Preheating 40 to 120 seconds
- b:Heating 50 seconds
- c:Peak temperature 240°C,max.
- d:Temperature rising slope 10°C/1 second,max.
- e:Temperature falling slope 8°C/1 second,max.

**Taping Dimensions (Unit:mm)**



**Reel Dimensions (Unit:mm)**



(1,000pcs/reel)