

MGA-242740-02 2.4 – 2.7 GHz 10W High Efficiency Linear Power Amplifier

Features:

- 15 dB Gain
- 40 dBm P_{-3dB}
- 33 dBm Linear Pout @ 2.5% EVM (802.11 64QAM)
- 25% Efficiency at 33 dBm Linear Output Power
- Fully Matched Input and Output for Easy Cascade
- + 28V Bias Voltage
- Surface Mount Package with RoHS Compliance
- MTTF > 100 years @ 85°C ambient temperature

Applications:

- 802.16d/e WiMax
- 802.11b WLAN
- Point-To-Point Radio Applications

Description:

The MGA-242740-02 is a power amplifier with the State-of-the-Art linear power-added-efficiency between 2.4 GHz and 2.7 GHz frequency band. Based on advanced robust GaN device technology, the power-added-efficiency of this power amplifier is as high as 25% when it outputs 2W linear burst power with 2.5% EVM under the 802.16d/e 64QAM modulation schemes. The high efficiency linear power amplifier also has excellent reliability. Ideal applications include the driver and the output power stage of WiMax and WLAN infrastructures and access points. It also can be used for PTP (Point-To-Point) radio applications for this band.

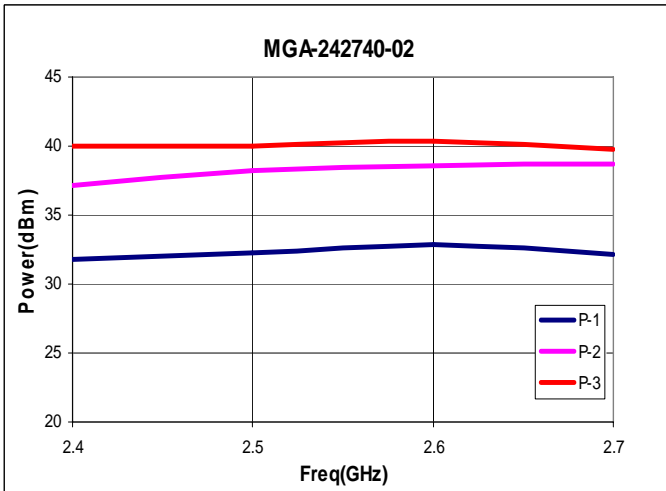
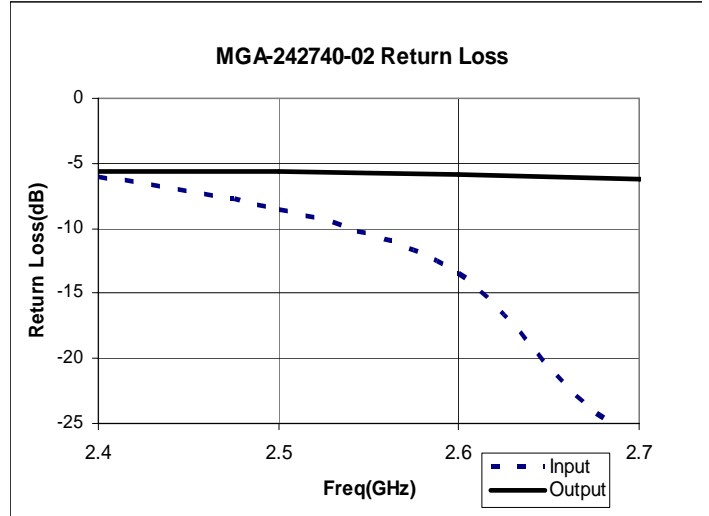
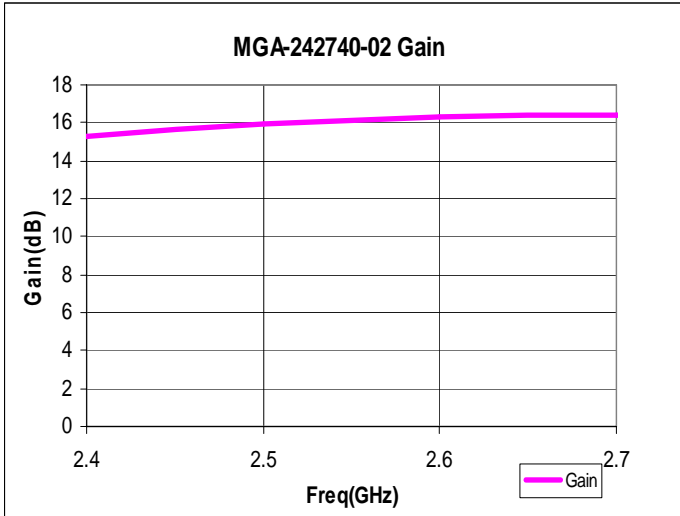
Typical RF Performance: $V_{ds}=28V$, $I_{cq}=80mA$, $T_a=25^\circ C$, $Z_0=50\ ohm$

Parameter	Units	Typical Data
Frequency Range	MHz	2400-2700
Gain (Typ / Min)	dB	15 / 12
Gain Flatness (Typ / Max)	+/-dB	1.0 / 1.5
Input Return Loss	dB	8
Output Return Loss	dB	8
Output P3dB	dBm	40
Pout @ 2.5% EVM	dBm	33
Operating Current Range	mA	50-400
Thermal Resistance	°C /W	5

MGA-242740-02

2.4 – 2.7 GHz 10W High Efficiency
Linear Power Amplifier

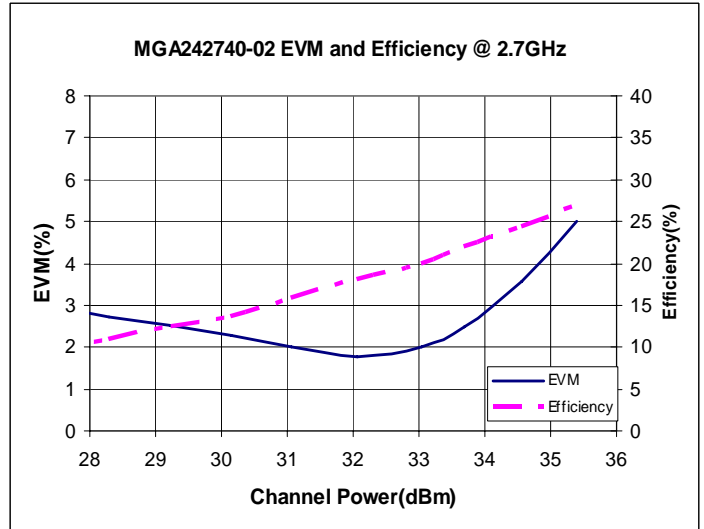
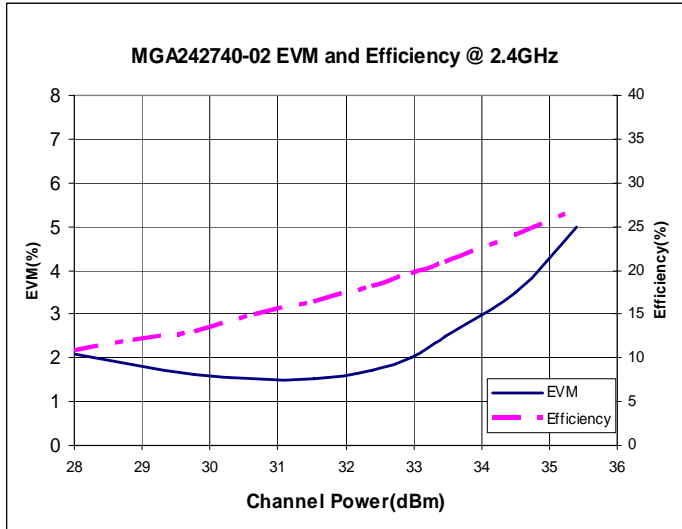
Typical RF Performance: $V_{ds}=28.0V$, $I_{cq}=80mA$, $Z_0=50\text{ ohm}$, $T_a=25\text{ }^\circ\text{C}$



MGA-242740-02

**2.4 – 2.7 GHz 10W High Efficiency
Linear Power Amplifier**

Typical RF Performance (Cont): $V_{ds}=28.0V$, $I_{cq}=80mA$, $Z_0=50\text{ ohm}$, $T_a=25\text{ }^\circ\text{C}$



MGA-242740-02

**2.4 – 2.7 GHz 10W High Efficiency
Linear Power Amplifier**

Absolute Maximum Ratings: ($T_a = 25\text{ }^\circ\text{C}$)*

SYMBOL	PARAMETERS	UNITS	ABSOLUTE MAXIMUM
V _{ds}	Drain-Source Voltage	V	50
I _d	Drain Current	mA	1000
I _g	Gate Current	mA	100
P _{diss}	DC Power Dissipation	W	50
P _{in max}	RF Input Power	dBm	+33
T _{ch}	Channel Temperature	°C	175
T _{stg}	Storage Temperature	°C	-55 to 150

*Operation of this device above any one of these parameters may cause permanent damage.

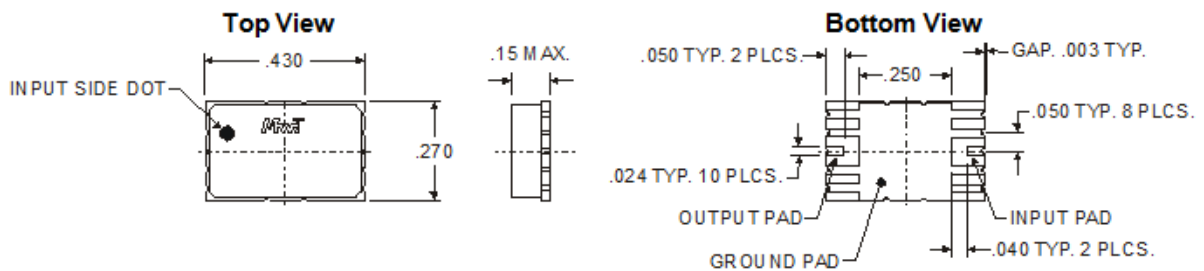
Typical Scattering Parameters: $V_{ds}=28\text{V}$, $I_{cq}=80\text{mA}$, $Z_0=50\text{ ohm}$, $T_a=25\text{ }^\circ\text{C}$

Freq(GHz)	dB(S11)	Ang(S11)	dB(S21)	Ang(S21)	dB(S12)	Ang(S12)	dB(S22)	Ang(S22)
1.50	-1.39	162.40	7.28	165.20	-35.33	94.34	-2.49	-137.90
1.60	-1.54	134.70	8.85	132.10	-34.34	63.93	-3.50	-173.40
1.70	-1.75	106.70	10.33	96.90	-33.62	32.03	-4.83	145.00
1.80	-2.03	78.39	11.50	59.84	-33.18	-1.29	-6.28	96.85
1.90	-2.39	50.19	12.31	22.21	-33.18	-34.34	-7.20	43.72
2.00	-2.78	21.45	12.90	-14.79	-33.52	-66.59	-7.17	-8.08
2.10	-3.25	-8.34	13.39	-51.18	-33.94	-97.34	-6.65	-54.05
2.20	-3.88	-39.59	13.93	-87.71	-34.37	-127.80	-6.15	-94.11
2.30	-4.75	-72.99	14.57	-124.60	-34.73	-158.20	-5.83	-130.20
2.40	-6.14	-109.20	15.30	-162.90	-35.01	171.20	-5.66	-164.70
2.50	-8.59	-149.00	15.92	156.60	-35.28	139.40	-5.67	161.30
2.60	-13.56	165.50	16.35	113.20	-35.58	104.30	-5.85	127.10
2.70	-25.55	45.25	16.44	67.96	-36.00	67.40	-6.19	91.98
2.80	-13.68	-79.61	15.96	21.64	-36.76	28.60	-6.75	55.79
2.90	-7.89	-127.50	14.95	-24.69	-37.76	-12.01	-7.61	18.38
3.00	-5.02	-169.40	13.47	-69.62	-38.74	-52.94	-8.86	-21.49
3.10	-3.43	152.70	11.61	-112.60	-39.72	-94.43	-10.72	-65.92
3.20	-2.51	118.40	9.55	-153.60	-40.41	-133.90	-12.87	-119.20
3.30	-1.95	87.39	7.31	167.20	-41.14	-173.40	-13.57	174.30
3.40	-1.65	58.83	4.91	129.90	-41.45	150.10	-11.31	111.60
3.50	-1.47	32.40	2.39	93.96	-41.85	117.10	-8.40	63.88

MGA-242740-02

2.4 – 2.7 GHz 10W High Efficiency
Linear Power Amplifier

Mechanical Information: *This Package is RoHS compliant*



All dimensions are in inches

Pin Designation (Top View)			
Pin 1 (DOT Top Left)	GND	Pin 10	GND
Pin 2	GND	Pin 9	GND
Pin 3	RF In/Vg	Pin 8	RF Out/Vdd
Pin 4	GND	Pin 7	GND
Pin 5	GND	Pin 6	GND

Application Circuit:

The evaluation board material, shown in Figure A, is Rogers 4003 material, 20 mil thick. The RF trace weight is 2 oz. Through holes with a diameter of 20 mils are spread uniformly over the center paddle for thermal relief and ground. Via holes underneath the paddle are back filled with conductive epoxy. It is recommended that via holes be placed nearby the DC bias connector to maintain ground continuity between the top layer and bottom ground planes. Mounting holes near the unit will help secure the board to the chassis, minimize ground current loops and improve thermal conductivity in the absence of sweat soldering the board to the chassis.

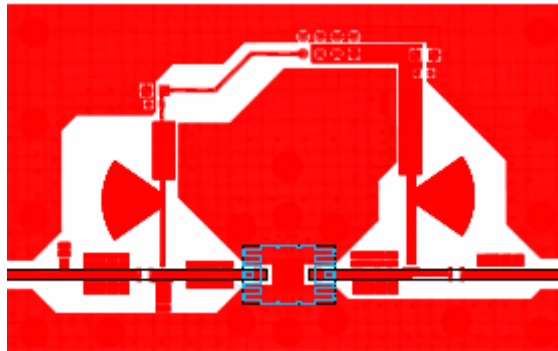


Figure A Evaluation Board

Biasing with quarter-wave stubs at the gate and drain are shown in Figure A. The impedance of the quarter wave structures is cyclical with frequency. A RF short is observed at frequencies that are even multiples of a quarter-wavelength and an open-impedance is observed at frequencies that are odd multiples of a quarter-wavelength. A 56 Ohm resistor is added in series to the gate bias. The effective impedance is increased which reduces the risk of oscillations. The 56 ohm resistor is not shown in Figure A. Through holes underneath the package is required to connect the top and bottom grounds and to improve thermal conductivity.

Application Notes:

802.16 256 carriers, 64 QAM @ 2.4GHz, Pavg=33.46dBm @ EVM=2.48%

IEEE 802.16-2004 OFDM		
Frequency: 2.4 GHz	Signal Level Setting: 17.2 dBm	Ref. Level / Ext. Att: 27.2 dBm / 17.2 dB
Sweep Mode: Continuous	Trigger Mode: External	Trigger Offset: -10 µs
Burst Type: OFDM DL Burst	Modulation: ALL	No Of Data Symbols: 1/2425

Result Summary						
No. of Bursts	7					
	Min	Mean	Limit	Max	Limit	Unit
EVM All Carriers	2.39	2.48	2.82	2.68	2.82	%
EVM Data Carriers	2.39	2.49		2.68		%
EVM Pilot Carriers	2.28	2.34		2.53		%
IQ Offset	0.08	0.11	17.78	0.15	17.78	%
Gain Imbalance	0.19	0.15		0.07		%
Quadrature Error	- 0.088	- 0.038		- 0.006		°
Center Frequency Error	80.75	80.99	± 19200	81.32	± 19200	Hz
Clock Error	- 0.01	- 0.13	± 8	- 2.23	± 8	ppm
Burst Power	33.43	33.46		33.49		dBm
Crest Factor	9.29	9.39		9.46		dB
RSSI	36.24	36.29		36.38		dBm
RSSI Standard Deviation		10.52				dB
CINR	15.25	15.29		15.52		dB
CINR Standard Deviation		20.97				dB

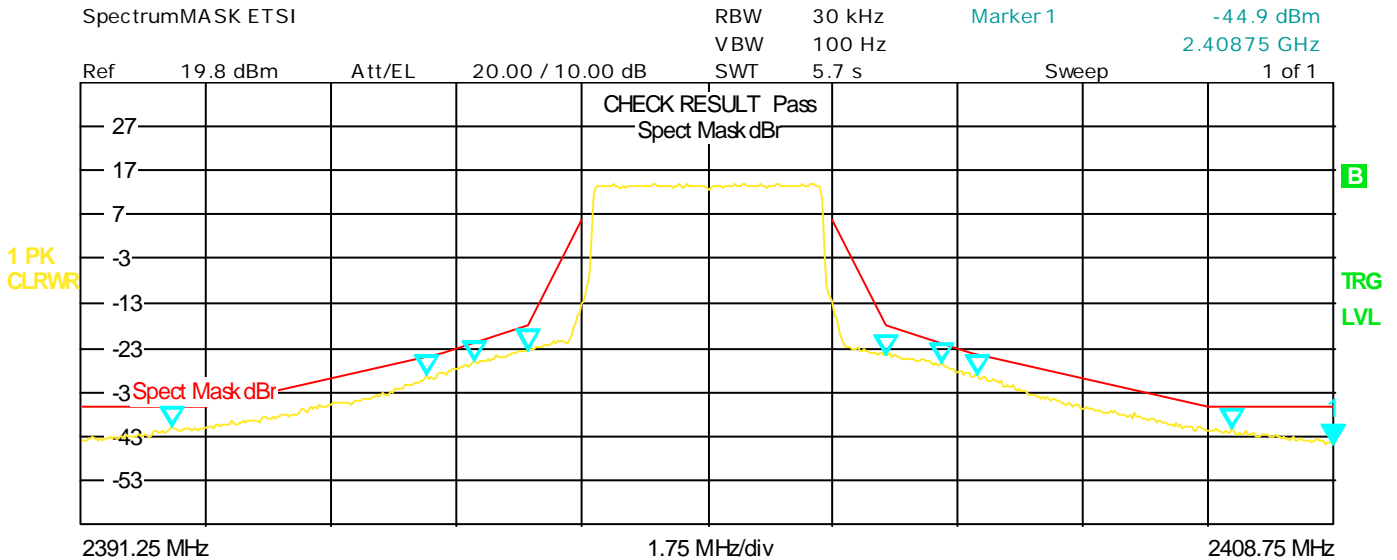
Running ...

Date: 5.DEC.2008 11:07:39

Application Notes (Cont):

Typical ACPR response for 802.16 Pavg=33.46dBm @ 2.5% EVM, 2.4GHz

IEEE 802.16-2004 OFDM							
Frequency: 2.4 GHz		Signal Level Setting: 18.3 dBm		Ref. Level / Ext. Att: 19.8 dBm / 17.2 dB			
Sweep Mode: Continuous		Trigger Mode: External		Trigger Offset: -10 μs			
Burst Type: OFDM DL Burst		Modulation: ALL		No Of Data Symbols: 1/2425			
Spectrum Emission Mask							
Tx Channel:		Bandwidth	3.5 MHz	Power	13.92 dBm		
Start Freq. Rel.	Stop Freq. Rel.	RBW	Freq. at ? to Limit	Pwr Abs	Pwr Rel	? to Limit	
-8.750 MHz	-7.000 MHz	30 kHz	2.392540064 GHz	-41.04 dBm	-54.96 dB	-4.96 dB	
-7.000 MHz	-3.700 MHz	30 kHz	2.396101763 GHz	-29.18 dBm	-43.09 dB	-4.37 dB	
-3.700 MHz	-2.500 MHz	30 kHz	2.396746795 GHz	-26.06 dBm	-39.98 dB	-4.21 dB	
-2.500 MHz	-1.750 MHz	30 kHz	2.397504007 GHz	-23.45 dBm	-37.36 dB	-5.49 dB	
1.750 MHz	2.500 MHz	30 kHz	2.402495993 GHz	-24.44 dBm	-38.36 dB	-6.49 dB	
2.500 MHz	3.700 MHz	30 kHz	2.403281250 GHz	-26.55 dBm	-40.47 dB	-4.56 dB	
3.700 MHz	7.000 MHz	30 kHz	2.403758013 GHz	-28.96 dBm	-42.88 dB	-4.67 dB	
7.000 MHz	8.750 MHz	30 kHz	2.407319712 GHz	-41.26 dBm	-55.17 dB	-5.17 dB	



Running ...

Date: 5.DEC.2008 11:08:03

Application Notes (Cont):

802.16 256 carriers, 64 QAM @ 2.7GHz, Pavg=33.60dBm @ EVM=2.48%

IEEE 802.16-2004 OFDM		
Frequency: 2.7 GHz	Signal Level Setting: 17.5 dBm	Ref. Level / Ext. Att: 27.5 dBm / 17.2 dB
Sweep Mode: Continuous	Trigger Mode: External	Trigger Offset: -10 µs
Burst Type: OFDM DL Burst	Modulation: ALL	No Of Data Symbols: 1/2425

Result Summary						
No. of Bursts	7					
	Min	Mean	Limit	Max	Limit	Unit
EVM All Carriers	2.41	2.52	2.82	2.73	2.82	%
EVM Data Carriers	2.41	2.53		2.73		%
EVM Pilot Carriers	2.36	2.40		2.59		%
IQ Offset	0.03	0.06	17.78	0.08	17.78	%
Gain Imbalance	0.19	0.14		0.06		%
Quadrature Error	- 0.058	- 0.023		0.003		°
Center Frequency Error	90.94	91.30	± 21600	91.75	± 21600	Hz
Clock Error	0.02	- 0.01	± 8	- 1.14	± 8	ppm
Burst Power	33.58	33.60		33.64		dBm
Crest Factor	9.29	9.37		9.43		dB
RSSI	36.42	36.47		36.56		dBm
RSSI Standard Deviation		10.60				dB
CINR	15.43	15.46		15.59		dB
CINR Standard Deviation		19.81				dB

Running ...

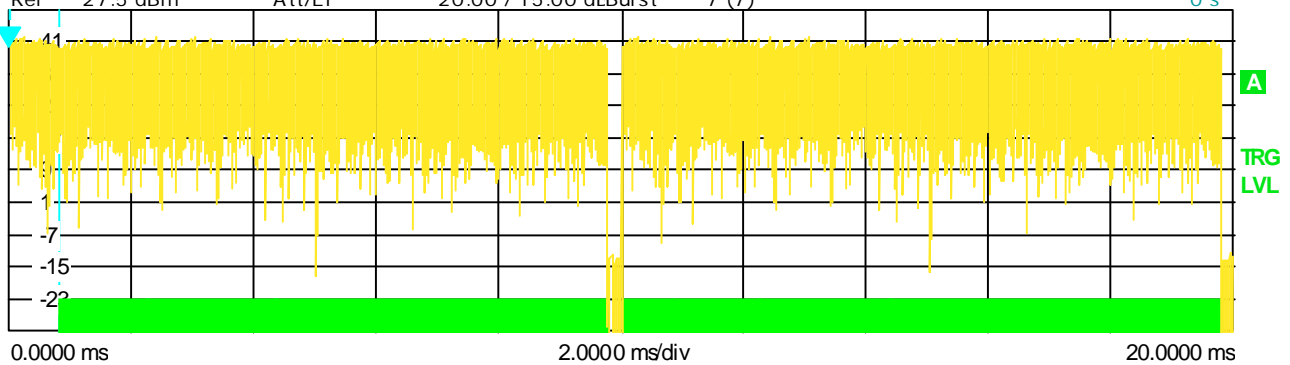
Date: 5.DEC.2008 11:01:26

Application Notes (Cont):

Typical constellation response for 802.16 Pavg=33.6dBm @ 2.5% EVM, 2.7GHz

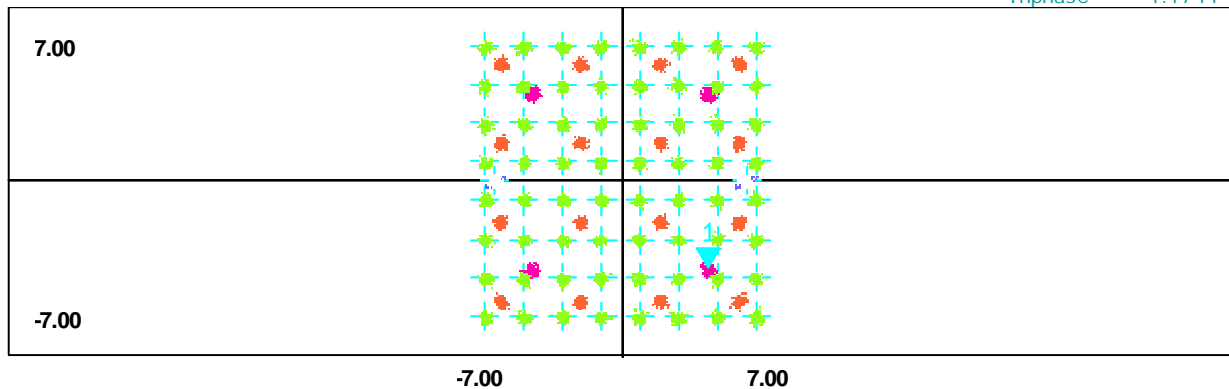
IEEE 802.16-2004 OFDM			
Frequency: 2.7 GHz	Signal Level Setting: 17.5 dBm	Ref. Level / Ext. Att: 27.5 dBm / 17.2 dB	
Sweep Mode: Continuous	Trigger Mode: External	Trigger Offset: -10 μs	
Burst Type: OFDM DL Burst	Modulation: ALL	No Of Data Symbols: 1/2425	

Capture Memory No of Samples 80001 Time to Capture Buffer Star828.00000 μs
 Capture Time 20 ms Gate Off Marker 1 39.54 dBm
 Ref 27.5 dBm Att/EI 20.00 / 15.00 dB Burst 7 (7) 0 s



Constellation vs Symbol

Marker 1 Quadrature - 4.4474
 Inphase 4.4741



Running ...

Date: 5.DEC.2008 11:02:15

MGA-242740-02

**2.4 – 2.7 GHz 10W High Efficiency
Linear Power Amplifier**

Contact Information

For additional information please visit www.cmlmicro.com or contact a sales office.

Europe	America	Asia
<ul style="list-style-type: none">• Maldon, UK• Tel +44 (0) 1621 875500• sales@cmlmicro.com	<ul style="list-style-type: none">• Winston-Salem, NC• Tel +1 336 744 5050• us.sales@cmlmicro.com	<ul style="list-style-type: none">• Singapore• Tel +65 6288129• sg.sales@cmlmicro.com

Although the information contained in this document is believed to be accurate, no responsibility is assumed by CML for its use. The product and product information is subject to change at any time without notice. CML has a policy of testing every product shipped using calibrated test equipment to ensure compliance with product specification.

© 2015 CML Microsystems Plc