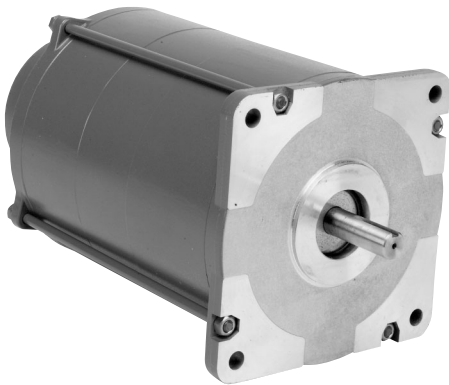


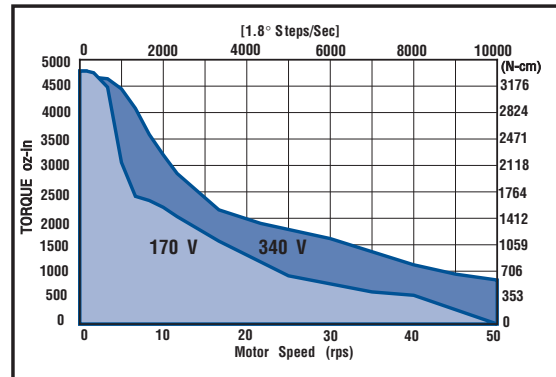
MH172

High Torque 170mm Frame Size (NEMA Size 66)



Performance Envelope

(see page 19 for detailed torque-speed curves)



- Can withstand up to 2-1/2 time rated current (instantaneous)
- ± 5% typical step accuracy
- Available with eight connections
- Class F insulation system
- Standard keyway

MH172 Specifications

Motor Frame	Minimum Holding Torque Bipolar 2Ø On	Rotor Inertia	*Weight		Maximum Shaft Load		Minimum Residual Torque
			Net	Ship	Overhang	Thrust	
			oz-in (N-cm)	oz-in-s ² (kg-cm ²)	lb (kg)	lb (kg)	
MH172	5,330 (3,764)	0.870 (61.4)	53 (24)	62 (28)	100 (45.4)	150 (68)	50 (35)

* Weight for motor with leads.

MH

172

FD

8030

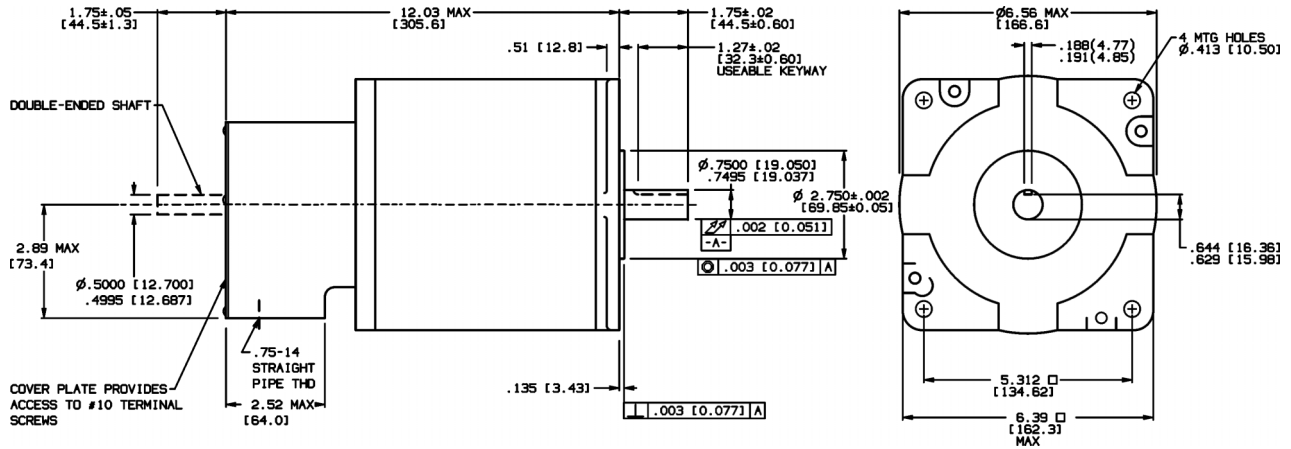
E

- E Rear shaft extension
- C2 200 line, six output encoder
- C4 400 line, six output encoder
- C5 500 line, six output encoder

MH172

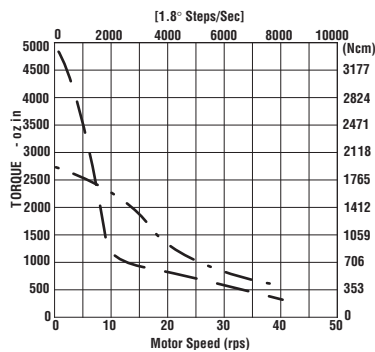
8-CONNECTION STEP MOTORS								
Model Number	Winding Specifications							
	Bipolar Series				Bipolar Parallel			
See below for options	Voltage (VDC)	Current (amperes)	Resistance (ohms)	Inductance (mH)	Voltage (VDC)	Current (amperes)	Resistance (ohms)	Inductance (mH)
MH172-FD-8030	3.25	10.6	0.31	8.5	1.6	21	0.077	2.1

Motor Dimensions*



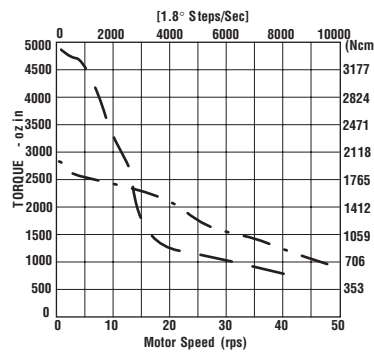
* Encoder if applicable, fits inside terminal box

170 V Bipolar - Microstep



MH172-FD-8030 series - 12.0 A peak MH172-FD-8030 parallel - 12.0 A peak

340 V Bipolar - Microstep



MH172-FD-8030 series - 12.0 A peak MH172-FD-8030 parallel - 12.0 A peak

MH172

- The curves do not show system resonances which will vary with system mechanical parameters.
- Duty cycle is dependent on torque, speed, drive parameters, and heat sink conditions. Maximum case temperature is 100°C.