



# New Products

New Products

## MH8804 quad MOS memory driver MH8805 dual MOS memory driver

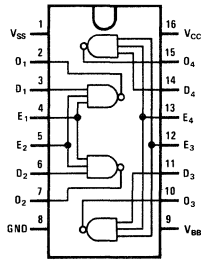
### general description

The quad MH8804 and the dual MH8805 are bipolar to MOS drivers specifically designed to drive input address lines for MOS memory arrays using MM1103 type RAMs. The MH8804 is pin compatible with the 13207 and the MH8805 with the SN75361.

### features

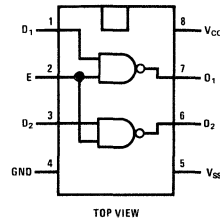
- Current mode output drive  $\pm 500$  mA
- Rise and fall times 20 ns
- Delay times 15 ns
- High output voltage  $V_{SS} - 1.0V$
- Low output voltage 0.3V
- Input levels TTL/DTL

### connection diagrams



TOP VIEW

MH8804



TOP VIEW

MH8805