

## MHCB Series



MHCB series is designed for low profile type with low RDC and ultra large current. Its molded magnetic shielded type is suitable for high-density mounting and ultra low buzz noise. Soldering conditions can be easily confirmed when mounting onto the board. This series also provides customers with embossed carrier type packaging for automatic mounting machine.

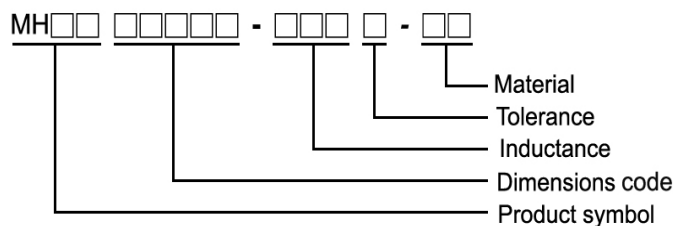
### Features

- RoHS compliant
- Low profile type
- Shielded construction
- Ultra low buzz noise due to molding construction

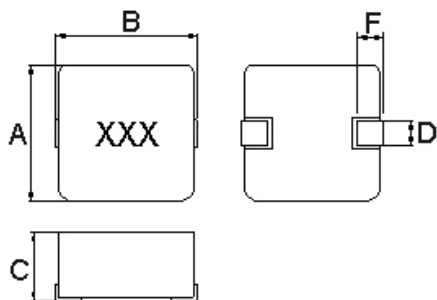
### Applications

- High density DC/DC converters
- POL converters
- High current VRM/VRD for notebook / Server / desktop CPUs
- High speed charger
- For thickness less than 1.2mm, suitable for low profile applications e.g., Ultra thin NB/Monitor/TV/Tablet

### Product Identification



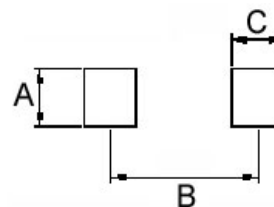
### Shape and Dimensions



Dimensions in mm

TYPE	A	B	C	D	F
06030	6.6±0.2	6.95±0.35	2.8±0.2	3.0±0.3	1.6±0.5

### Recommended Pattern



Dimensions in mm

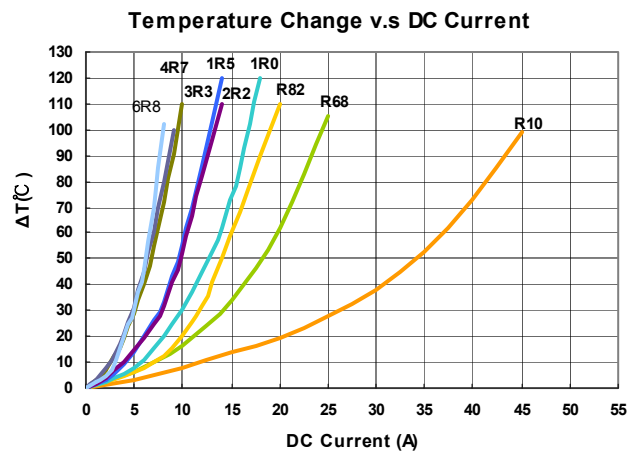
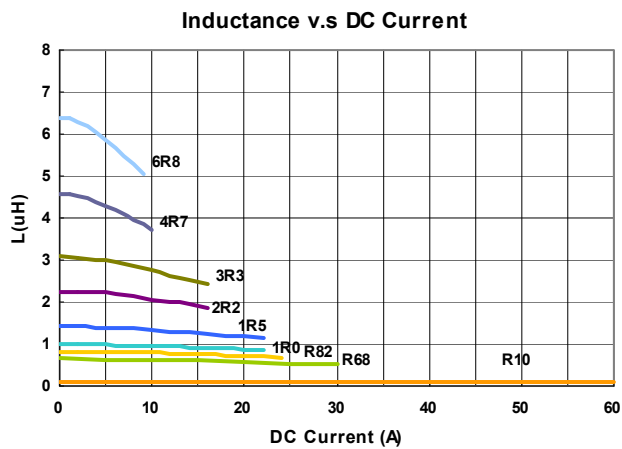
TYPE	A	B	C
06030	3.5	6.05	2.35

## Electrical Characteristics

Part Number	Inductance ( $\mu\text{H}$ )	Tolerance ( $\pm\%$ )	Test Frequency (KHz)	I <sub>rms</sub> (A)Typ.	I <sub>sat</sub> (A)Typ.	RDC ( $\text{m}\Omega$ )Max
MHCB06030-R10M-C1	0.10	20	100	32.5	60	1.7
MHCB06030-R68M-C1	0.68	20	100	15.5	25	5.5
MHCB06030-R82M-C1	0.82	20	100	13.0	24	8.0
MHCB06030-1R0M-C1	1.0	20	100	11.0	22	10
MHCB06030-1R5M-C1	1.50	20	100	9.0	18	15
MHCB06030-2R2M-C1	2.2	20	100	8.0	14	20
MHCB06030-3R3M-C1	3.3	20	100	6.0	13.5	30
MHCB06030-4R7M-C1	4.7	20	100	5.5	10.0	40
MHCB06030-6R8M-C1	6.8	20	100	4.5	8.0	60

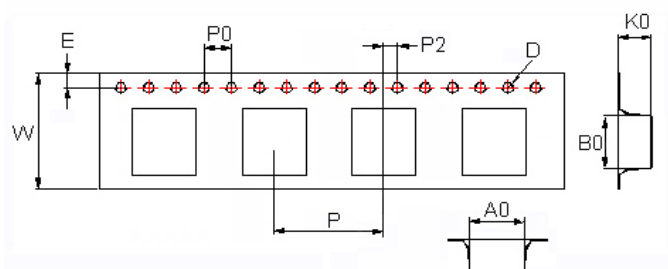
- I<sub>rms</sub> DC current (A) that will cause an approximate  $\Delta T$  of 40°C
- I<sub>sat</sub> DC current (A) that will cause L to drop approximately 20%
- Tolerance : M=  $\pm 20\%$
- L : WK 3260B, 100KHz 0.5V
- Rdc : CHEN HWA 502
- Operating temperature range from -55°C to 125°C. (Including self - temperature rise)

**Test Instruments :** WK3260B Impedance / Material Analyzer

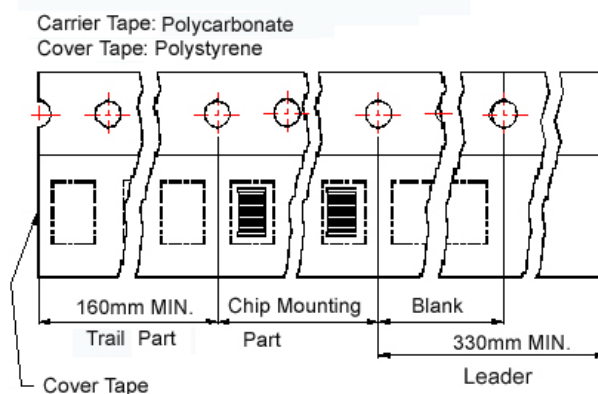


## Packaging Specifications

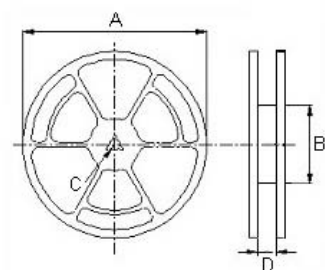
### Tape Dimensions



### Tape Material



### Reel Dimensions



### Dimensions in mm

TYPE	Tape Dimensions									Reel Dimensions				Quantity
	A0	B0	K0	D	E	W	P	P0	P2	A	B	C	D	PCS / REEL
06030	6.9	7.6	3.4	1.55	1.75	16	12	4	2	330	100	13	17.4	1000