



MULTI-INNO TECHNOLOGY CO., LTD.

LCD MODULE SPECIFICATION

Model : MI0240WT

Revision	1.0
Engineering	
Date	
Our Reference	



Table of Contents

Coversheet.....	1
Table of Contents	2
Record of Revision.....	3
1 General Specifications	4
2 Input/Output Terminals	5
3 Absolute Maximum Ratings	7
4 Electrical Characteristics	8
5 Timing Chart.....	10
6 Optical Characteristics	15
7 Environmental / Reliability Tests.....	19
8 Mechanical Drawing	20
9 Packing Drawing	21
10 Precautions for Use of LCD Modules.....	22

1 General Specifications

Feature		Spec
Display Spec	Size	2.4 inch
	Resolution	240(RGB) x 320
	Interface	CPU 8/9/16/18 bits
	Color Depth	262k
	Technology Type	a-Si
	Pixel Pitch (mm)	0.153x 0.153
	Pixel Configuration	R.G.B Vertical Stripe
	Display Mode	MI with Normally White
	Surface Treatment(Up Polarizer)	Clear Type (3H)
	Viewing Direction	6 o'clock
	Gray Scale Inversion Direction	12 o'clock
Mechanical Characteristics	LCM (W x H x D) (mm)	42.72x60.26x3.40
	Active Area(mm)	36.72 x 48.96
	With /Without TSP	With TSP
	Weight (g)	TBD
	LED Numbers	3 LEDs
Electronic	Driver IC	HX8347G

Note 1: Viewing direction for best image quality is different from TFT definition, there is a 180 degree shift.

Note 2 : Requirements on Environmental Protection: Q/S0002

Note 3: LCM weight tolerance: $\pm 5\%$

2 Input/Output Terminals

2.1 TFT LCD Panel

No	Symbol	I/O	Description	Comment
1	GND	P	Power Ground	
2	Y-	I/O	Touch panel coordinate in the down side of envisage drawing	
3	X-	I/O	Touch panel coordinate in the right side of envisage drawing	
4	Y+	I/O	Touch panel coordinate in the up side of envisage drawing	
5	X+	I/O	Touch panel coordinate in the left side of envisage drawing	
6	GND	P	Power Ground	
7	IM0	I	Mode select	
8	IM3	I	Mode select	Note 4-1
9	NC	-	Floating	
10	NC	-	Floating	
11	LCD_ID	O	LCD identify	
12	RESET	I	Reset signal	
13	D9	I	Data Input	
14	D0	I	Data Input	
15	D17	I	Data Input	
16	D16	I	Data Input	
17	D15	I	Data Input	
18	D14	I	Data Input	
19	D13	I	Data Input	
20	D12	I	Data Input	
21	D11	I	Data Input	
22	D10	I	Data Input	
23	D8	I	Data input	
24	D7	I	Data input	
25	D6	I	Data input	
26	D5	I	Data input	
27	D4	I	Data input	
28	D3	I	Data input	
29	D2	I	Data input	
30	D1	I	Data input	
31	RD	I	Read	
32	WR	I	Write	
33	RS	I	Register select	
34	CS	I	Chip select	
35	GND	P	Ground	
36	IOVCC	P	Power Supply of Logic Circuit	
37	VCC	P	Power Supply of Analog Circuit	
38	VCC	P	Power Supply of Analog Circuit	
39	NC	-	Floating	
40	LEDK3	P	LED cathode	
41	LEDK2	P	LED cathode	



42	LEDK1	P	LED cathode	
43	LEDA	P	LED anode	
44	GND	P	Ground	

Note1: I/O definition: I----Input O---Output P----Power/ Ground NC--- Not Connected

3 Absolute Maximum Ratings

3.1 Driving TFT LCD Panel

Item	Symbol	MIN	MAX	Unit	Remark
Logic Supply Voltage	IOVCC	-0.3	4.6	V	
Analog Supply Voltage	VCC	-0.3	4.6	V	
Input voltage	DB0-DB17,IM0,IM3,RD,RS,CS,WR,RESET	-0.3	IOVCC+0.5	V	
Touch Panel	Vtp	-	7	V	
Back Light Forward Current	I _{LED}	-	25	mA	For each LED
Operating Temperature	T _{OPR}	-20	60	°C	
Storage Temperature	T _{STG}	-30	70	°C	

Ta = 25°C

4 Electrical Characteristics

4.1 Driving TFT LCD Panel

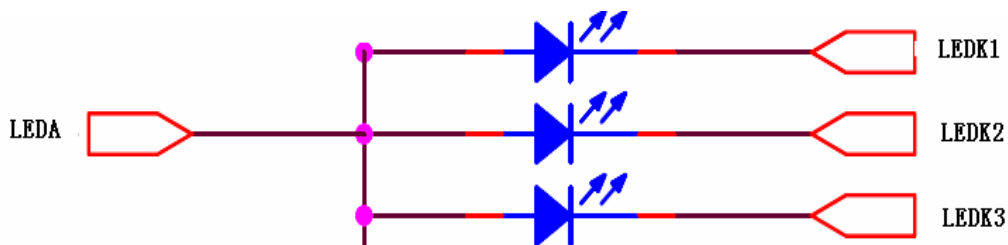
GND=0V, Ta=25°C

Item	Symbol	MIN	TYP	MAX	Unit	Remark
Logic Supply Voltage	IOVCC	1.65	1.8	3.3	V	
Analog Supply Voltage	VCC	2.3	2.8	3.3	V	
Input Signal Voltage	Low Level	V_{IL}	$0.7 \times IOVCC$	-	IOVCC	DB0-DB17,IM0,IM3,RD,RS,CS,WR,RESET
	High Level	V_{IH}	-	-	$0.3 \times IOVCC$	
Output Signal Voltage	Low Level	V_{OL}	$0.8 \times IOVCC$	-	-	
	High Level	V_{OH}	-	--	$0.2 \times IOVCC$	
(Panel+ LSI) Power Consumption	Black Mode (60Hz)	-	TBD	-	mW	
	8 Color Mode	-	TBD	-	mW	
	Sleeping Mode	-	TBD	-	mW	

4.2 Driving Backlight Ta=25°C

Item	Symbol	Min	Typ	Max	Unit	Remark
Forward Current	I_F	-	20	-	mA	For each LED
Forward Voltage	V_F	2.9	3.2	3.4	V	For each LED
Power Consumption	W_{BL}	-	192	-	mW	3 LEDs

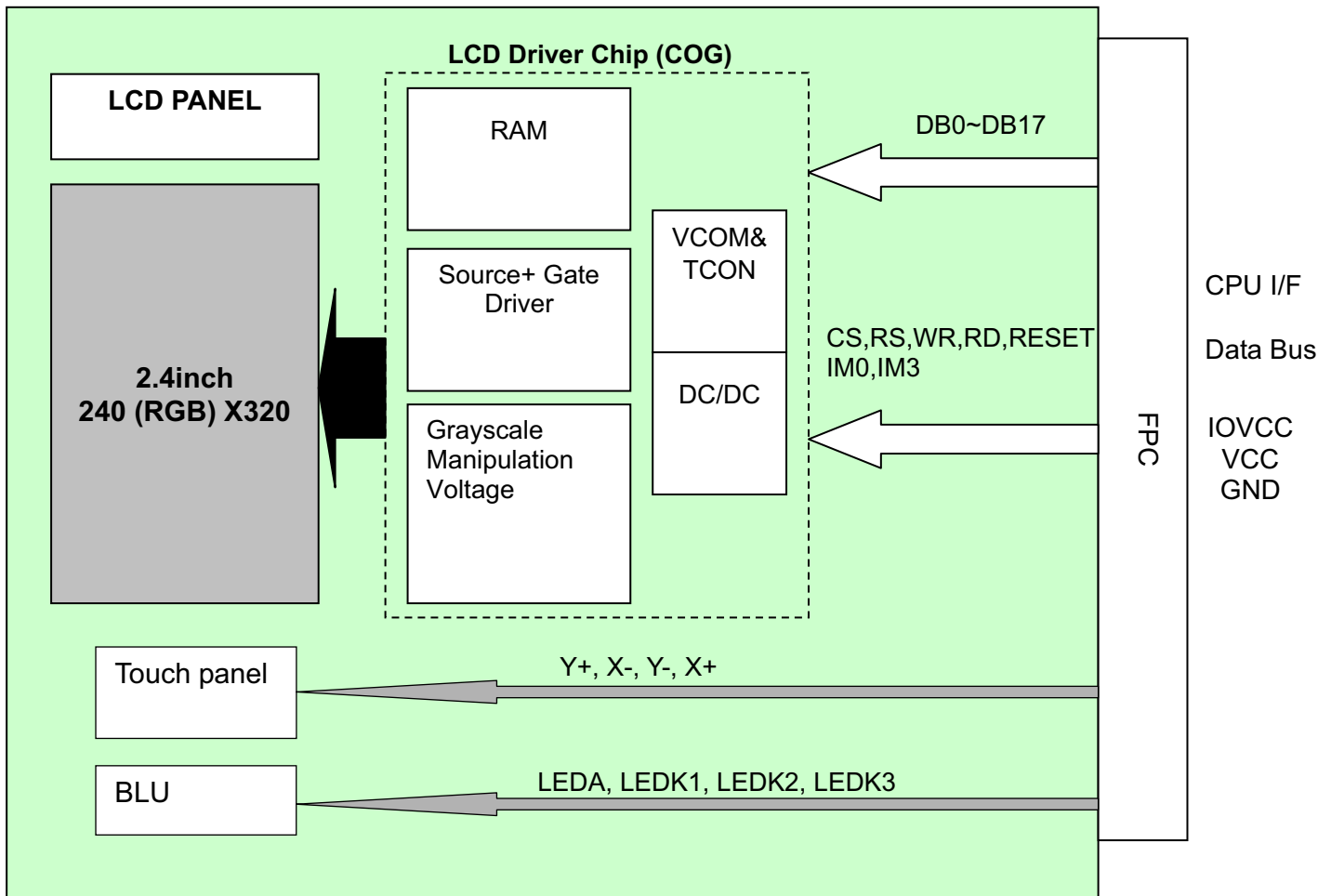
Note1: Figure below shows the connection of backlight LED.



Note 2: One LED: $1/3 \times I_F = 20 \text{ mA}$, $V_F = 3.2 \text{ V}$

Note 3: The life of LED: 20,000 hours

4.3 Block Diagram



5 Timing Chart

5.1 Interface Characteristics

(VSSA=0V, IOVCC=1.65V to 3.3V, VCI=2.3V to 3.3V, T_A = -30 to 70° C)

Signal	Symbol	Parameter	Spec.			Unit	Description
			Min.	Typ	Max.		
DNC_SCL	tAST	Address setup time	10	-	-	ns	-
	tAHT	Address hold time (Write/Read)	10	-	-		
NCS	tCHW	Chip select "H" pulse width	0	-	-	ns	-
	tCS	Chip select setup time (Write)	15	-	-		
	tRCS	Chip select setup time (Read ID)	45	-	-		
	tRCSFM	Chip select setup time (Read FM)	355	-	-		
	tCSF	Chip select wait time (Write/Read)	10	-	-		
	tCSH	Chip select hold time	10	-	-		
NWR_SCL	tWC	Write cycle	66	-	-	ns	-
	tWRH	Control pulse "H" duration	15	-	-		
	tWRL	Control pulse "L" duration	15	-	-		
NRD(ID)	tRC	Read cycle (ID)	160	-	-	ns	When read ID data
	tRDH	Control pulse "H" duration (ID)	90	-	-		
	tRDL	Control pulse "L" duration (ID)	45	-	-		
NRD(FM)	tRCFM	Read cycle (FM)	450	-	-	ns	When read from frame memory
	tRDHFM	Control pulse "H" duration (FM)	90	-	-		
	tRDLFM	Control pulse "L" duration (FM)	355	-	-		
DB17 to DB0	tDST	Data setup time	10	-	-	ns	For maximum CL=30pF For minimum CL=8pF
	tDHT	Data hold time	10	-	-		
	tRAT	Read access time (ID)	-	-	100		
	tRATFM	Read access time (FM)	-	-	340		
	tODH	Output disable time	20	-	80		

Note: The input signal rise time and fall time (tr, tf) is specified at 15 ns or less.

Logic high and low levels are specified as 30% and 70% of IOVCC for Input signals.

Parallel interface characteristics

5.2 Registr Write/Read Timing Parameter

a. Write to register

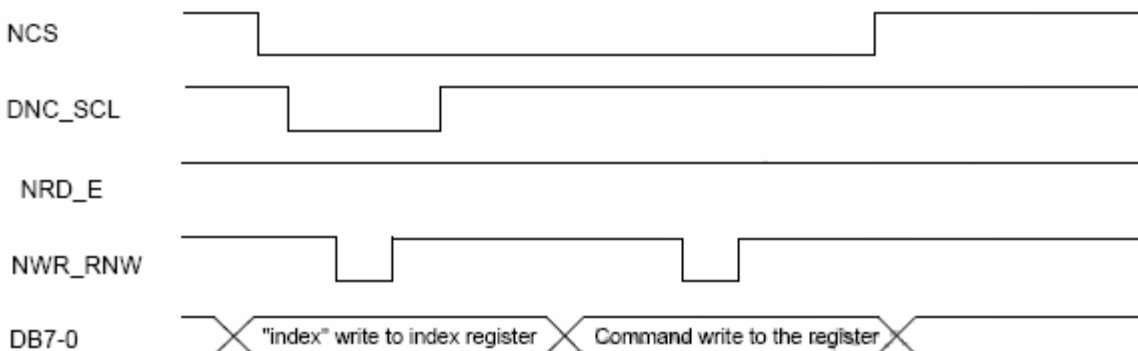


Figure 5.1 Register write timing in parallel bus system interface (for I80 series MPU)

b. Read to register

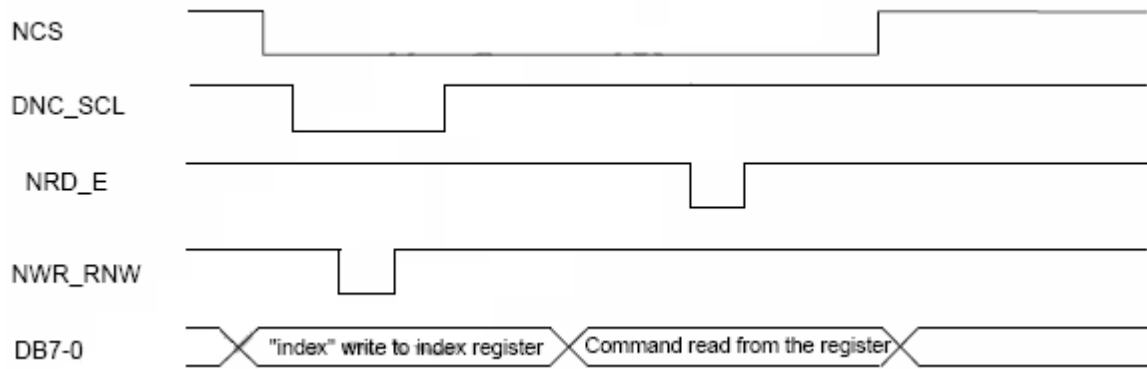


Figure 5.2 Register read timing in parallel bus system interface (for I80 series MPU)

5.3 GRAM write timing in i80 series system

Register Command	DB17	DB16	DB15	DB14	DB13	DB12	DB11	DB10	DB9	DB8	DB7	DB6	DB5	DB4	DB3	DB2	DB1	DB0	Command
22H	x	x	x	x	x	x	x	x	x	x	0	0	1	0	0	0	1	0	22H
17H	DB17	DB16	DB15	DB14	DB13	DB12	DB11	DB10	DB9	DB8	DB7	DB6	DB5	DB4	DB3	DB2	DB1	DB0	Color
03h	x	x	x	x	x	x	x	x	x	x	R3	R2	R1	R0	G3	G2	G1	G0	4K-Color (2-pixels/ 3-bytes)
	x	x	x	x	x	x	x	x	x	x	B3	B2	B1	B0	R3	R2	R1	R0	
	x	x	x	x	x	x	x	x	x	x	G3	G2	G1	G0	B3	B2	B1	B0	
05h	x	x	x	x	x	x	x	x	x	x	R4	R3	R2	R1	R0	G5	G4	G3	65K-Color (1-pixel/ 2-bytes)
	x	x	x	x	x	x	x	x	x	x	G2	G1	G0	B4	B3	B2	B1	B0	
06h	x	x	x	x	x	x	x	x	x	x	R5	R4	R3	R2	R1	R0	x	x	262K-Color (1-pixel/ 3bytes)
	x	x	x	x	x	x	x	x	x	x	G5	G4	G3	G2	G1	G0	x	x	
	x	x	x	x	x	x	x	x	x	x	B5	B4	B3	B2	B1	B0	x	x	

Table 5.3.1 8 bit parallel interface GRAM write table

Register Command	DB17	DB16	DB15	DB14	DB13	DB12	DB11	DB10	DB9	DB8	DB7	DB6	DB5	DB4	DB3	DB2	DB1	DB0	Command
22H	x	x	x	x	x	x	x	x	x	x	0	0	1	0	0	0	1	0	22H
17H	DB17	DB16	DB15	DB14	DB13	DB12	DB11	DB10	DB9	DB8	DB7	DB6	DB5	DB4	DB3	DB2	DB1	DB0	Color
03h											R3	R2	R1	R0	G3	G2	G1	G0	4K-Color
05h	x	x	R4	R3	R2	R1	R0	G5	G4	G3	G2	G1	G0	B5	B4	B3	B2	B1	65K-Color
06h	x	x	R5	R4	R3	R2	R1	R0	x	x	G5	G4	G3	G2	G1	G0	x	x	262K-Color (2-pixels/ 3bytes)
	x	x	B5	B4	B3	B2	B1	B0	x	x	R5	R4	R3	R2	R1	R0	x	x	
	x	x	G5	G4	G3	G2	G1	G0	x	x	B5	B4	B3	B2	B1	B0	x	x	
07h	x	x	R5	R4	R3	R2	R1	R0	G5	G4	G3	G2	G1	G0	B5	B4	B3	B2	262K-Color (16+2)
	x	x	x	x	x	x	x	x	x	x	x	x	x	x	x	x	B1	B0	

Table 5.3.2 16bit parallel interface GRAM write table

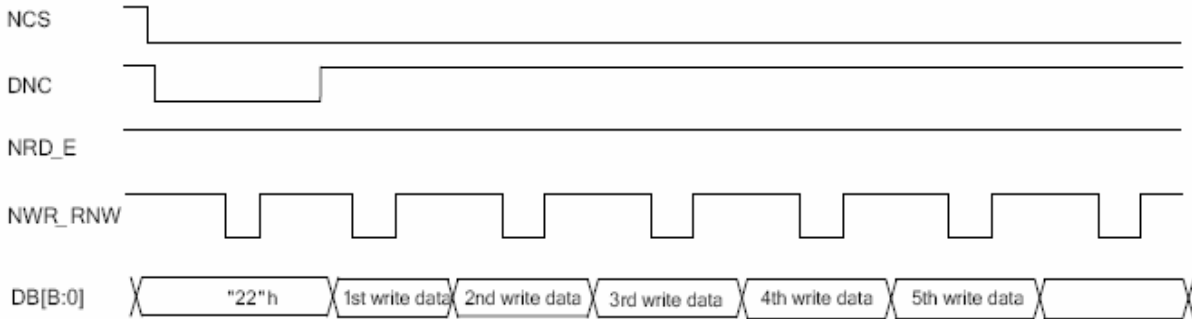
Register Command	DB17	DB16	DB15	DB14	DB13	DB12	DB11	DB10	DB9	DB8	DB7	DB6	DB5	DB4	DB3	DB2	DB1	DB0	Register
22H	x	x	x	x	x	x	x	x	x	x	0	0	1	0	0	0	1	0	22H
17H	DB17	DB16	DB15	DB14	DB13	DB12	DB11	DB10	DB9	DB8	DB7	DB6	DB5	DB4	DB3	DB2	DB1	DB0	Color
06h	x	x	x	x	x	x	x	x	x	R5	R4	R3	R2	R1	R0	G5	G4	G3	262K-Color (1-pixels/ 2bytes)
	x	x	x	x	x	x	x	x	x	G2	G1	G0	B5	B4	B3	B2	B1	B0	

Table 5.3.3 9 bit parallel interface GRAM write table

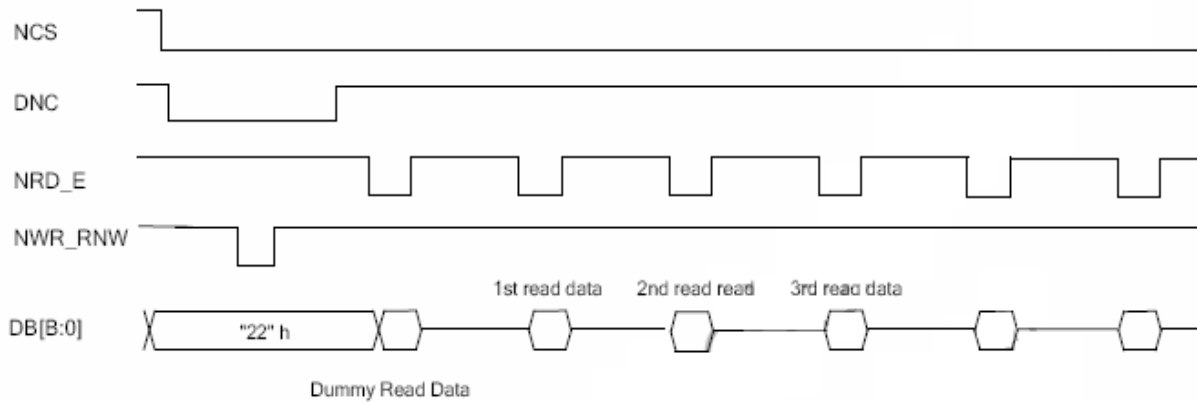
Register Command	DB17	DB16	DB15	DB14	DB13	DB12	DB11	DB10	DB9	DB8	DB7	DB6	DB5	DB4	DB3	DB2	DB1	DB0	Register
22H	x	x	x	x	x	x	x	x	x	x	0	0	1	0	0	0	1	0	22H
17H	DB17	DB16	DB15	DB14	DB13	DB12	DB11	DB10	DB9	DB8	DB7	DB6	DB5	DB4	DB3	DB2	DB1	DB0	Color
06h	R5	R4	R3	R2	R1	R0	G5	G4	G3	G2	G1	G0	B5	B4	B3	B2	B1	B0	262K-Color

Table 5.3.4 18 bit parallel interface GRAM write table

a. Write the GRAM



b. Read the GRAM



5.4 Reset Timing Characteristics

Item	Symbol	Unit	Min.	Typ.	Max.
RESET low pulse width	tRESW	us	10	-	-
Reset complete time (STB out mode)	tREST	ms	5	-	
Reset complete time (STB mode)		ms	120		
Reset goes high level after power on time	tPRES	ms	1		

Table 5.4.1 RESET Timing Parameter

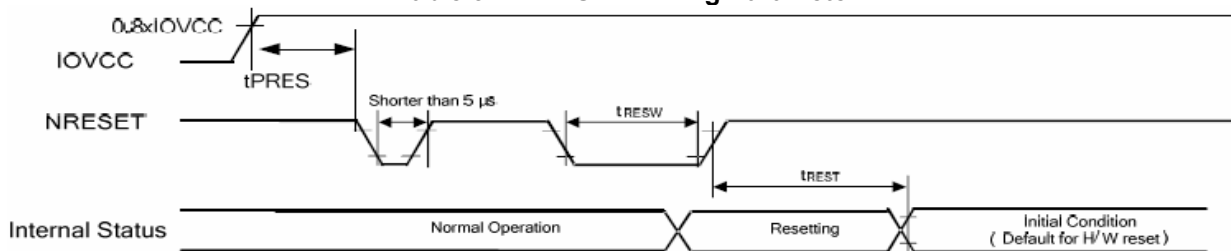
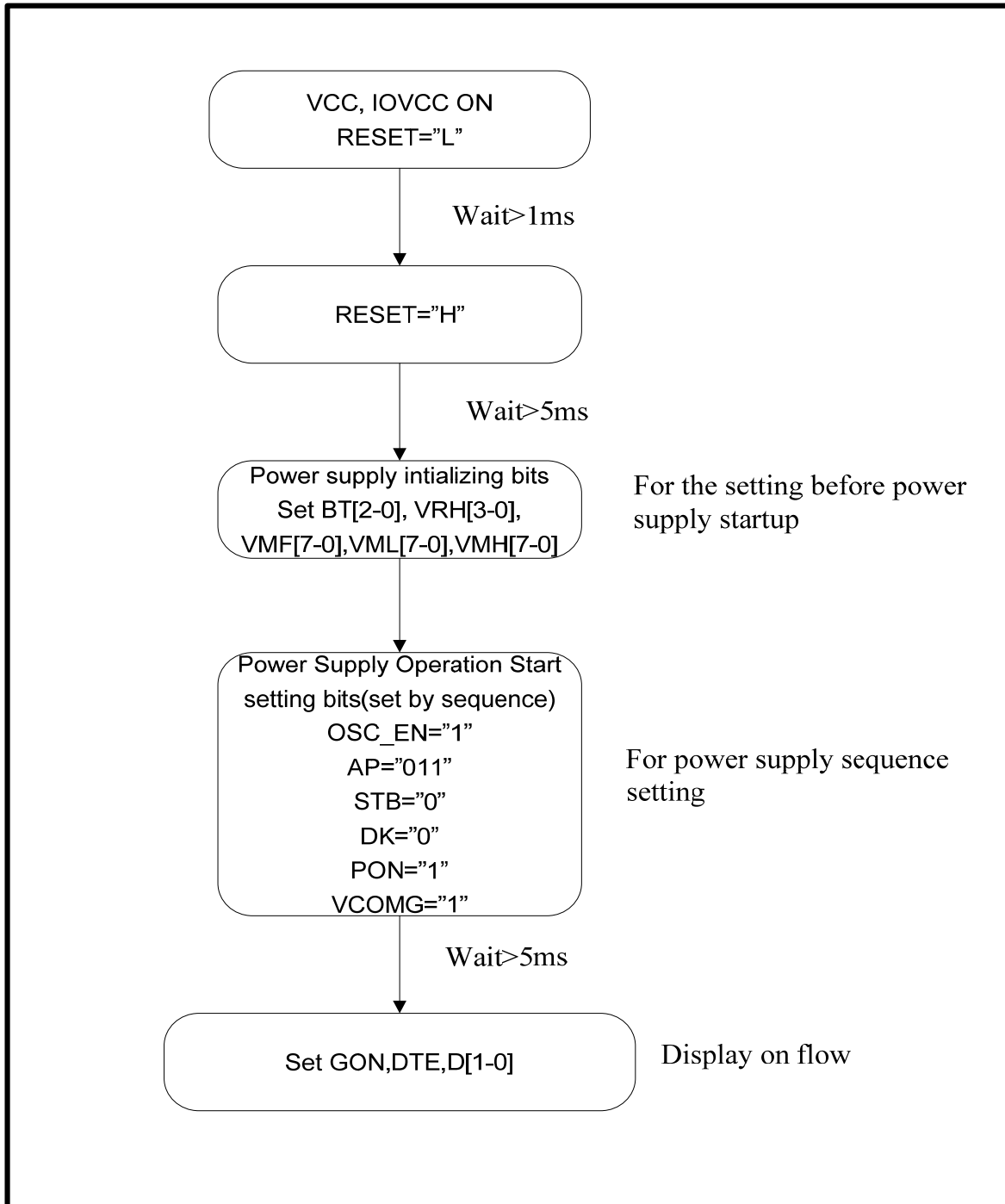


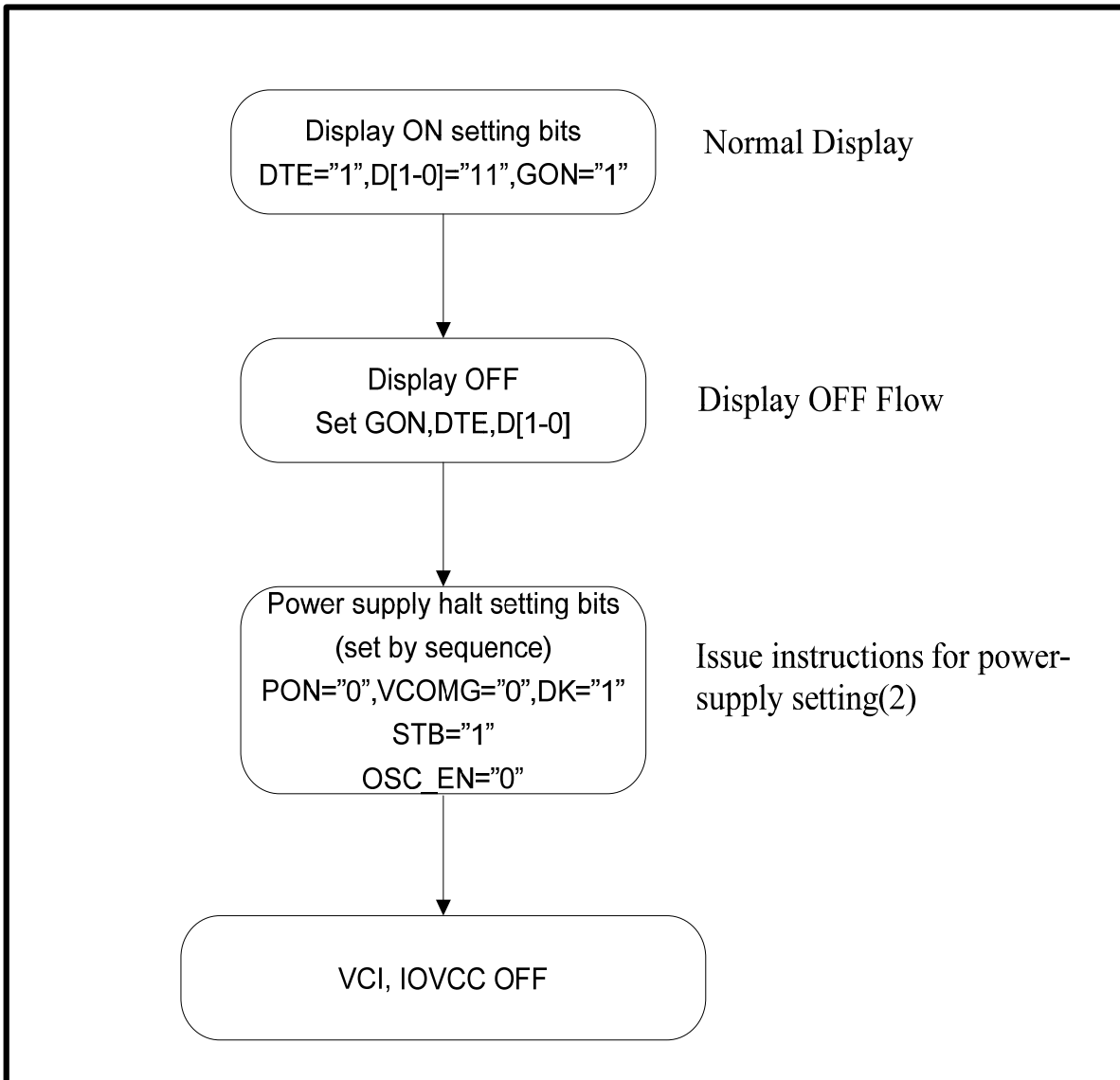
Figure 5.4.2 RESET Timing

5.5 Power on/off Sequence

5.5.1 Power on sequence



5.5.2 Power off sequence



6 Optical Characteristics

 $T_a=25^{\circ}\text{C}$

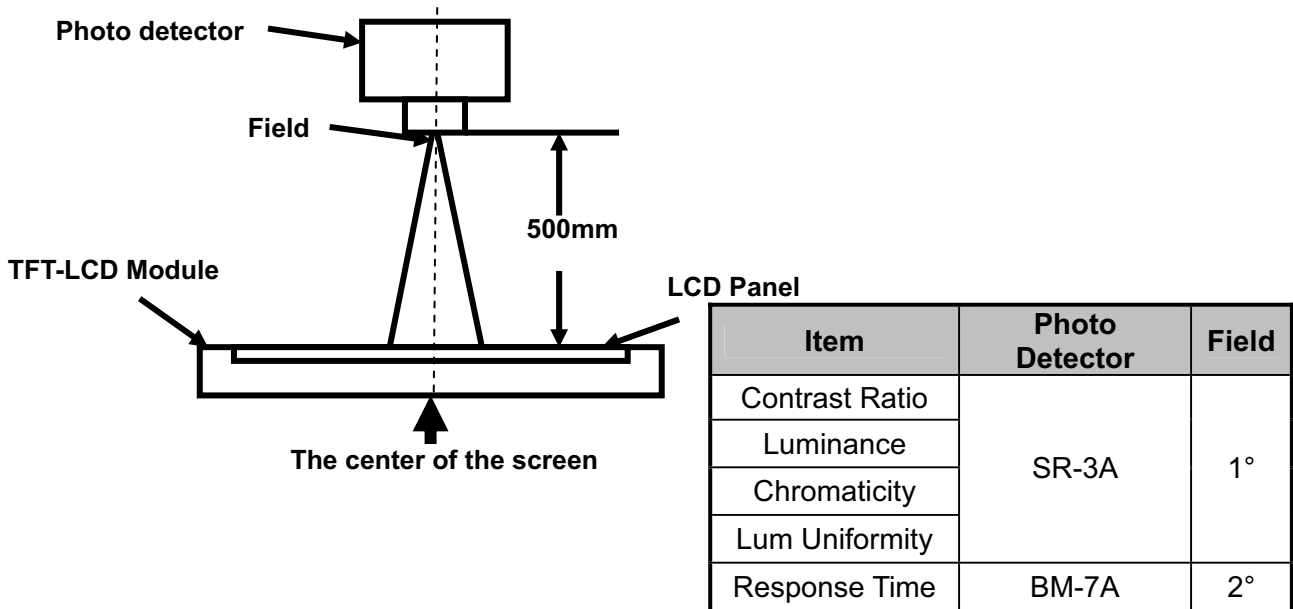
Item	Symbol	Condition	Min	Typ	Max	Unit	Remark	
View Angles	θT	$CR \geq 10$	40	45	-	Degree	Note 2	
	θB		40	45	-			
	θL		15	20	-			
	θR		35	50	-			
Contrast Ratio	CR	$\theta=0^{\circ}$	300	350	-		Note1 Note3	
Response Time	T_{on}	25°C	-	20	30	ms	Note1	
	T_{off}						Note4	
Chromaticity	White	Backlight is on	x	0.235	0.285	0.335		Note5, Note1
			y	0.255	0.305	0.355		
	Red		x	0.540	0.590	0.640		
			y	0.280	0.330	0.380		
	Green		x	0.280	0.330	0.380		
			y	0.530	0.580	0.630		
	Blue		x	0.110	0.150	0.200		
			y	0.050	0.100	0.150		
Uniformity	U		-	80	-	%	Note1 Note6	
NTSC			-	50	-	%	Note 5	
Luminance	L		160	180	-	cd/m^2	Note1 Note7	

Test Conditions:

1. For one LED: $V_F=3.2\text{V}$, $1/3 \times I_F=15\text{mA}$, the ambient temperature is 25°C .
2. The test systems refer to Note 1 and Note 2.

Note 1: Definition of optical measurement system.

The optical characteristics should be measured in dark room. After 5 minutes operation, the optical properties are measured at the center point of the LCD screen. All input terminals LCD panel must be ground when measuring the center area of the panel.



Note 2: Definition of viewing angle range and measurement system.

viewing angle is measured at the center point of the LCD by CONOSCOPE(ergo-80).

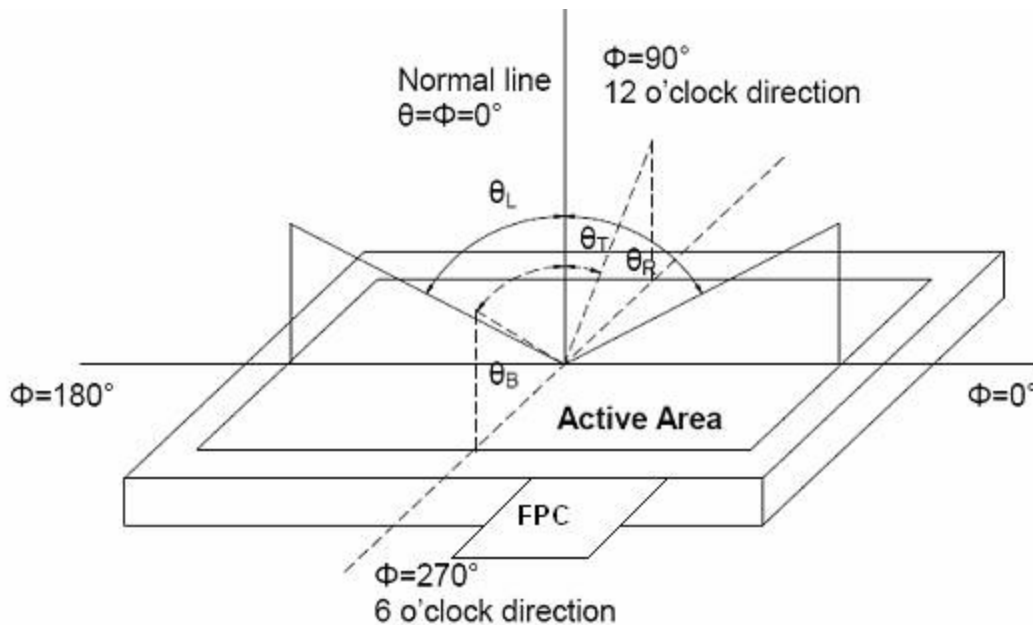


Fig. 1 Definition of viewing angle

Note 3: Definition of contrast ratio

$$\text{Contrast ratio (CR)} = \frac{\text{Luminance measured when LCD is on the "White" state}}{\text{Luminance measured when LCD is on the "Black" state}}$$

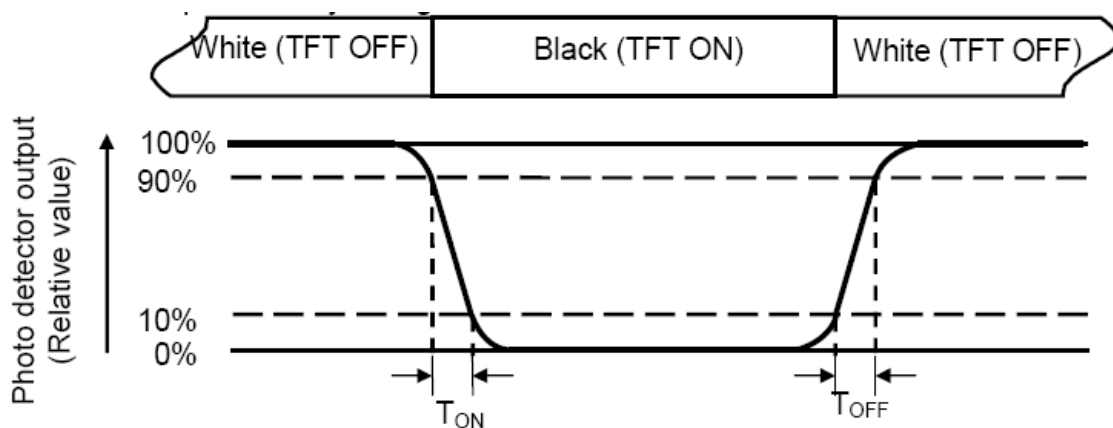
“White state “:The state is that the LCD should driven by V_{white} .

“Black state”: The state is that the LCD should driven by V_{black} .

V_{white} : To be determined V_{black} : To be determined.

Note 4: Definition of Response time

The response time is defined as the LCD optical switching time interval between “White” state and “Black” state. Rise time (T_{ON}) is the time between photo detector output intensity changed from 90% to 10%. And fall time (T_{OFF}) is the time between photo detector output intensity changed from 10% to 90%.


Note 5: Definition of color chromaticity (CIE1931)

Color coordinates measured at center point of LCD.

Note 6: Definition of Luminance Uniformity

Active area is divided into 9 measuring areas (Refer Fig. 2). Every measuring point is placed at the center of each measuring area.

$$\text{Luminance Uniformity}(U) = L_{\min} / L_{\max}$$

L-----Active area length W----- Active area width

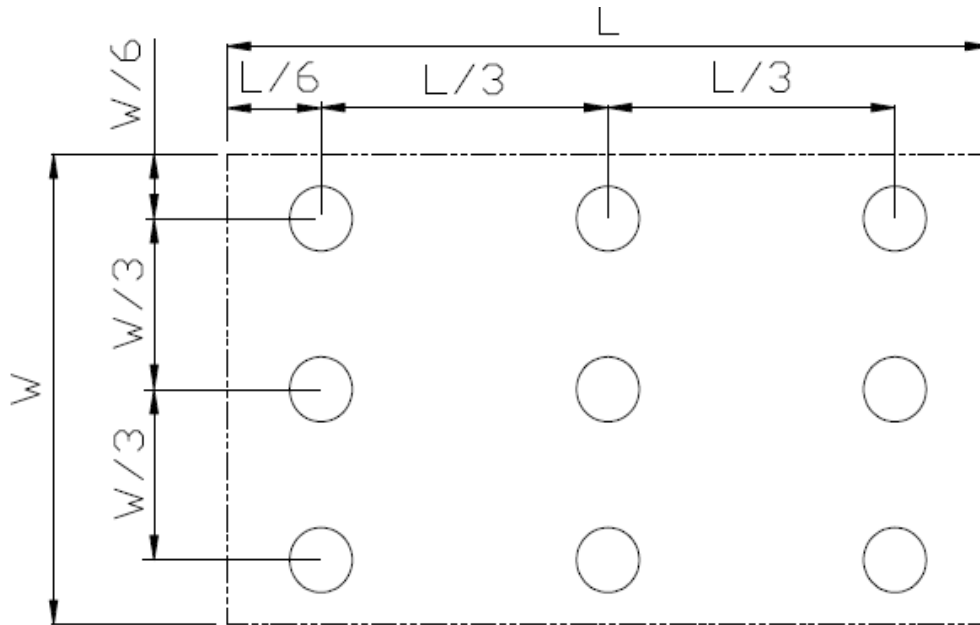


Fig. 2 Definition of uniformity

L_{\max} : The measured maximum luminance of all measurement position.

L_{\min} : The measured minimum luminance of all measurement position.

Note 7: Definition of Luminance:

Measure the luminance of white state at center point.

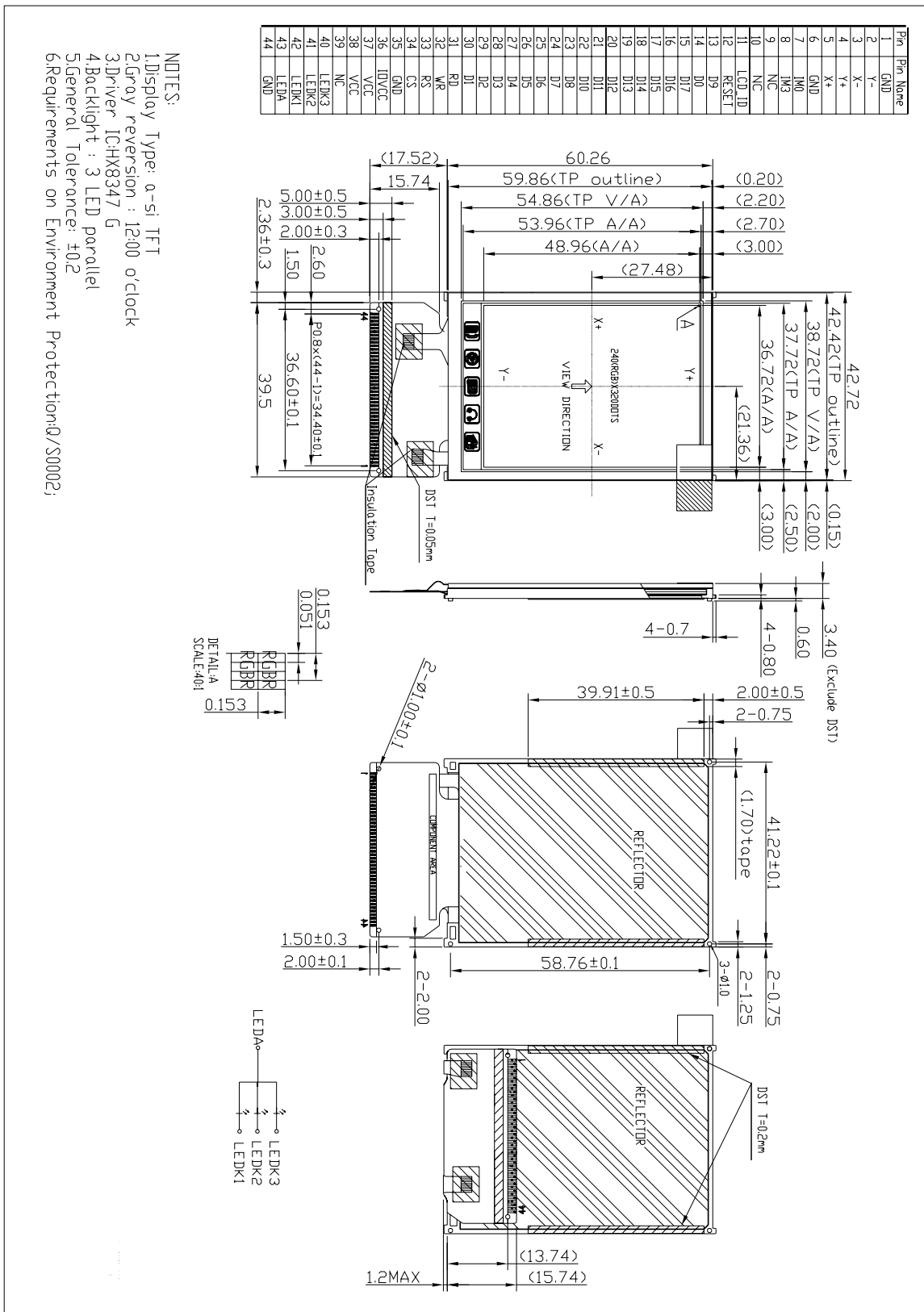
7 Environmental / Reliability Tests

No	Test Item	Condition	Remarks
1	High Temperature Operation	Ts=+60°C, 240hrs	Note1 IEC60068-2-1:2007,GB2423.2-2008
2	Low Temperature Operation	Ta=-20°C, 240hrs	IEC60068-2-1:2007 GB2423.1-2008
3	High Temperature Storage	Ta=+70°C, 240hrs	IEC60068-2-1:2007 GB2423.2-2008
4	Low Temperature Storage	Ta=-30°C, 240hrs	IEC60068-2-1:2007 GB2423.1-2008
5	High Temperature & High Humidity Storage	Ta=+60°C, 90% RH 240 hours	Note2 IEC60068-2-78 :2001 GB/T2423.3—2006
6	Thermal Shock (Non-operation)	-30°C 30 min~+70°C 30 min, Change time:5min, 20 Cycles	Start with cold temperature, End with high temperature, IEC60068-2-14:1984,GB2423.22-2002
7	Electro Static Discharge (Operation)	C=150pF, R=330Ω, 5points/panel Air:±8KV, 5times; Contact:±4KV, 5 times; (Environment: 15°C~35°C, 30%~60%, 86Kpa~106Kpa)	IEC61000-4-2:2001 GB/T17626.2-2006
8	Vibration (Non-operation)	Frequency range:10~55Hz, Stroke:1.5mm Sweep:10Hz~55Hz~10Hz hours for each direction of X.Y.Z. (6 hours for total) (Package condition)	2 IEC60068-2-6:1982 GB/T2423.10—1995
9	Shock (Non-operation)	60G 6ms, ±X,±Y,±Z 3times, for each direction	IEC60068-2-27:1987 GB/T2423.5—1995
10	Package Drop Test	Height:80 cm, 1 corner, 3 edges, 6 surfaces	IEC60068-2-32:1990 GB/T2423.8—1995

Note1: Ts is the temperature of panel's surface.

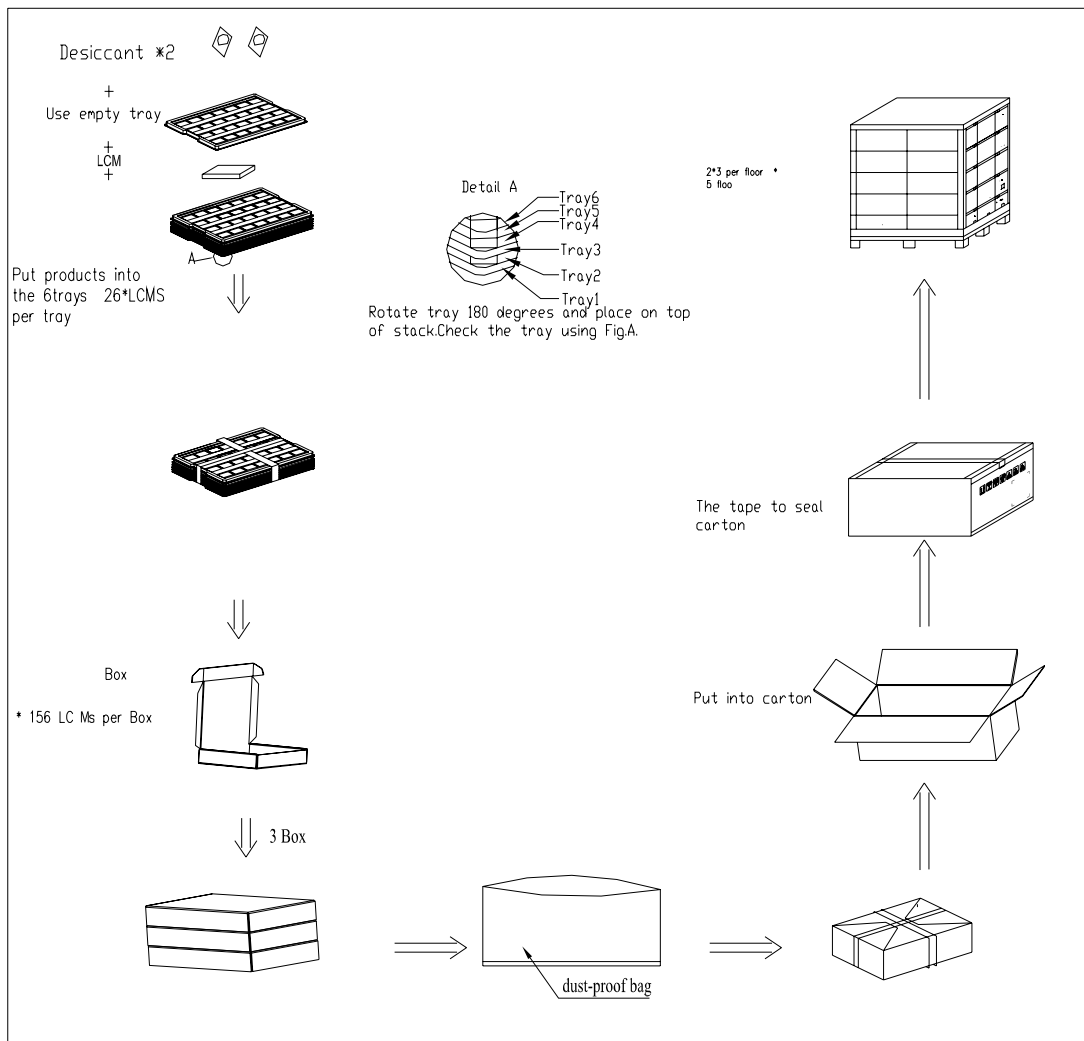
Note2: Ta is the ambient temperature of sample.

8 Mechanical Drawing



9 Packing Drawing

No	Item	Model (Material)	Dimensions(mm)	Unit Weight(Kg)	Quantity	Remark	
1	LCM module	MI0240WT	42.72x60.26x3.40	TBD	468		
2	Tray	PET (Transmit)	485X330X13.8	0.167	26	Anti-static	
4	Dust-Proof Bag	Dust-Proof Bag	700*545	0.021	1		
5	BOX	CORRUGATED PAPER	520*345*74	0.227	3		
6	Desiccant	Desiccant	45*50	0.0035	6		
7	Carton	CORRUGATED PAPER	544*365*250	1.01	1		
8	Total weight	TBD					



10 Precautions for Use of LCD Modules

11.1 Handling Precautions

- 11.1.1 The display panel is made of glass. Do not subject it to a mechanical shock by dropping it from a high place, etc.
- 11.1.2 If the display panel is damaged and the liquid crystal substance inside it leaks out, be sure not to get any in your mouth, if the substance comes into contact with your skin or clothes, promptly wash it off using soap and water.
- 11.1.3 Do not apply excessive force to the display surface or the adjoining areas since this may cause the color tone to vary.
- 11.1.4 The polarizer covering the display surface of the LCD module is soft and easily scratched. Handle this polarizer carefully.
- 11.1.5 If the display surface is contaminated, breathe on the surface and gently wipe it with a soft dry cloth. If still not completely clear, moisten cloth with one of the following solvents:
 - Isopropyl alcohol、
 - Ethyl alcoholSolvents other than those mentioned above may damage the polarizer. Especially, do not use the following:
 - Water
 - Ketone
 - Aromatic solvents
- 11.1.6 Do not attempt to disassemble the LCD Module.
- 11.1.7 If the logic circuit power is off, do not apply the input signals.
- 11.1.8 To prevent destruction of the elements by static electricity, be careful to maintain an optimum work environment.
 - 11.1.8.1 Be sure to ground the body when handling the LCD Modules.
 - 11.1.8.2 Tools required for assembly, such as soldering irons, must be properly ground.
 - 11.1.8.3 To reduce the amount of static electricity generated, do not conduct assembly and other work under dry conditions.
 - 11.1.8.4 The LCD Module is coated with a film to protect the display surface. Be care when peeling off this protective film since static electricity may be generated.

11.2 Storage precautions

- 11.2.1 When storing the LCD modules, avoid exposure to direct sunlight or to the light of fluorescent lamps.
- 11.2.2 The LCD modules should be stored under the storage temperature range. If the LCD modules will be stored for a long time, the recommend condition is:
Temperature : 0℃ ~ 40℃ Relatively humidity: ≤80%
- 11.2.3 The LCD modules should be stored in the room without acid, alkali and harmful gas.

11.3 Transportation Precautions:

The LCD modules should be no falling and violent shocking during transportation, and also should avoid excessive press, water, damp and sunshine.