



ISO9001 & ISO14001 & TS16949 **CHILISIN ELECTRONICS CORP.**

SPECIFICATION FOR APPROVAL

Customer : **BLUME**

Customer P/N: _____

Drawing No : _____

Quantity : **X** **Pcs.** **Date :** **2016/6/28**

Chilisin P/N : **MIDA1010T-SERIES-R8AU**

Automotive Grade Inductor

Holegen Free
RoHS Compliant
REACH Compliant
Lead Free Solders
AEC-Q200

奇力新電子股份有限公司

Chilisin Electronics Corp
No. 29, Alley 301, Tehhsin Rd.,
Hukou, Hsinchu 303, Taiwan
TEL : +886-3- 599-2646
FAX : +886-3- 599-9176
E-mail : sales@chilisin.com.tw
http : //www.chilisin.com.tw

東莞奇力新電子有限公司

Chilisin Electronics (Dongguan) Co., Ltd.
No. 78, Puxing Rd., Yuliangwei Administration Area,
Qingxi Town, Dongguan City, Guangdong, China
TEL : +86-769-8773-0251~3
FAX : +86-769-8773-0232
E-mail : cect@chilisin.com.tw

奇力新電子(河南)有限公司

Chilisin Electronics (Henan) Co., Ltd.
XiuWu Xian, industry gathering area
JiaoZuo, Henan China
Postal Code:454350
TEL:+86-391-717-0682
FAX:+86-391-717-0666

蘇州奇益新電子有限公司

SUZHOU QI YIXIN Electronics Co., Ltd.
No.143,Song Shan Rd., Suzhou New District,
Suzhou,China
Postal Code:215129
TEL:+86-512-6841-2350
FAX:+86-512-6841-2356
E-mail : suzhou@chilisin.com.tw

Drawn by
張鈺雯 Yuwen.Chang

Checked by
張清証 Even.Chang

Approved by
JACKY鍾 Jacky.Chung

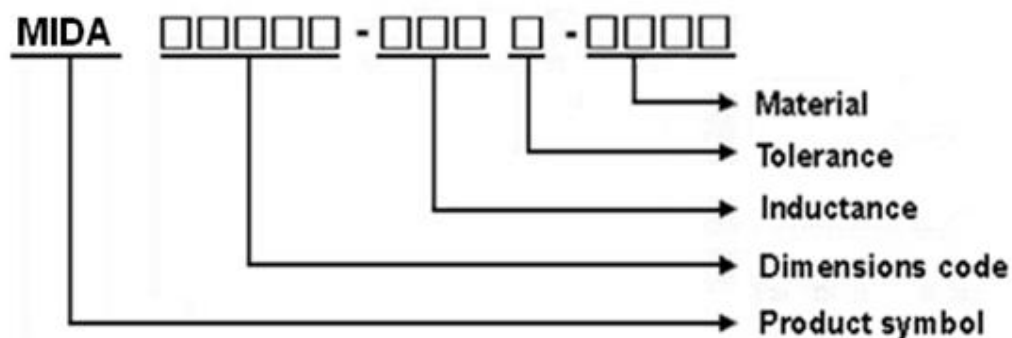


MIDA1010T Series Specification

AEC-Q200

1 Scope: This specification applies to large current and low loss SMD shielding power inductor.

2 Part Numbering:



3 Rating:

Operating Temperature: -40°C~125°C (Including self - temperature rise)

Storage Temperature: (on tape & reel): -20°C to +40°C; 75% RH max.

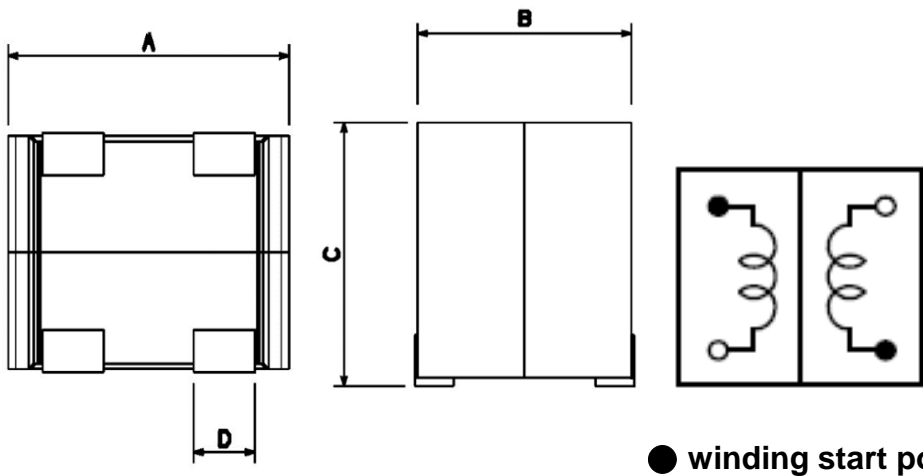
4 Standard Testing Condition

	Unless otherwise specified	In case of doubt
Temperature	Ordinary Temperature(15 to 35°C)	20 to 30°C
Humidity	Ordinary Humidity(25 to 85% RH)	50 to 80 %RH

MIDA1010T Series Specification

AEC-Q200

5 Configuration and Dimensions:



Dimensions in mm

TYPE	MIDA1010T
A	10.2±0.2
B	9.5±0.5
C	10.85±0.25
D	2.3±0.3

6 Electrical Characteristics:

Part No.	Inductance (uH)	Tolerance (±%)	Test Freq.	Irms(A) Typ	Isat(A) Typ	RDC(mΩ) Max(Typ)	Marking
MIDA1010T-100M-R8AU	10	20	100kHz,0.5V	4.8	7.5	24(20)	100
MIDA1010T-120M-R8AU	12	20	100kHz,0.5V	4.2	6.0	32(28)	120
MIDA1010T-150M-R8AU	15	20	100kHz,0.5V	3.8	5.5	35(30)	150
MIDA1010T-220M-R8AU	22	20	100kHz,0.5V	3.0	4.5	53(48)	220

Note:

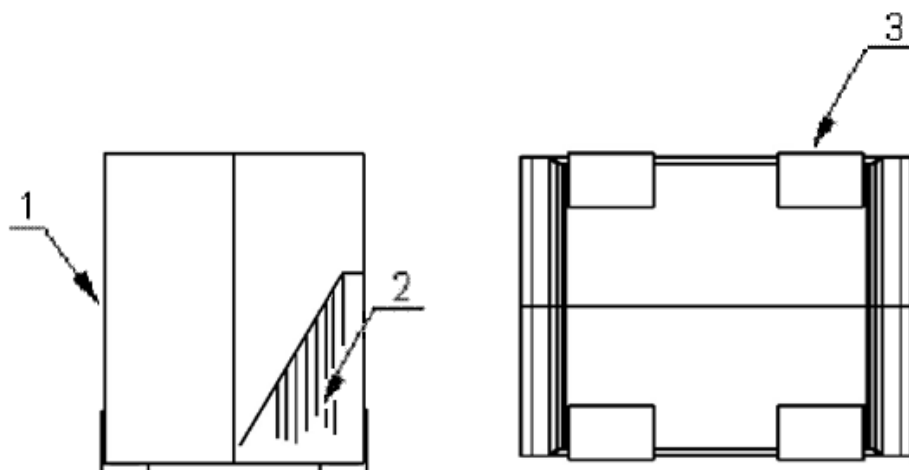
- 1.Operating temperature range -40℃~125℃ (Including self - temperature rise)
- 2.Isat for Inductance drop 30% from its value without current.
- 3.Irms for a 40℃ temperature rise from 25℃ ambient.
- 4.The part temperature (ambient + temp rise) should not exceed 125℃ under worst case operating conditions.
Circuit design 125℃ under worst case operating conditions. Component placement, PWB trace size and thickness, airflow and other cooling provisions all affect the part temperature. Part temperature should be verified in the end application.
- 5.Absolute maximum voltage 30VDC

MIDA1010T Series Specification

AEC-Q200

7 MIDA1010T Series

7.1 Construction:



7.2 Material List:

No	Part	Material
1	Core	Alloy powder
2	Wire	Copper Wire
3	Terminal	Terminal Copper

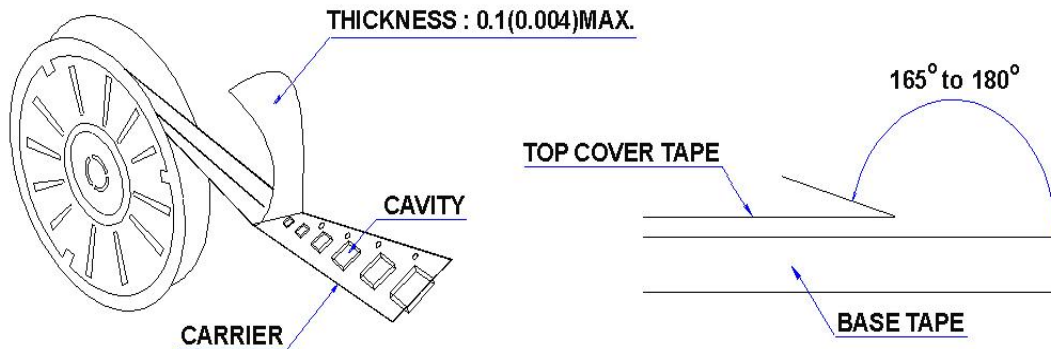
MIDA1010T Series Specification

AEC-Q200

8 PACKAGING

8.1 Packaging -Cover tape

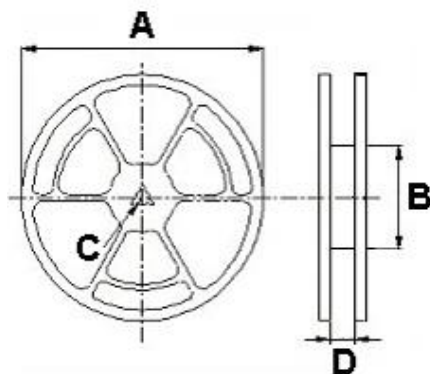
The force for tearing off cover tape is 10 to 100 grams in the arrow direction.



8.2 Packaging Quantity

TYPE	PCS/REEL
MIDA1010T	200

8.3 Reel Dimensions



Dimensions in mm

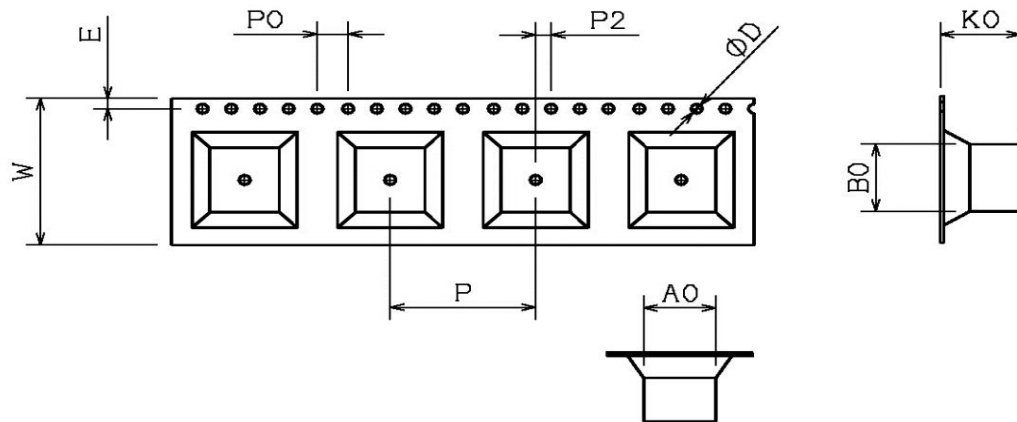
TYPE	A	B	C	D
MIDA1010T	330	100	13	24

MIDA1010T Series Specification

AEC-Q200

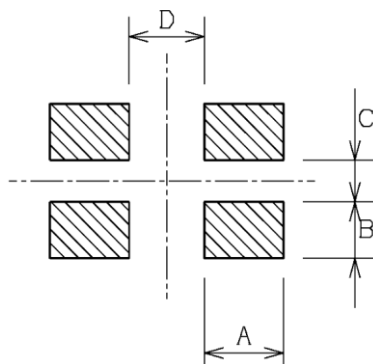
8 PACKAGING

8.4 Tape Dimensions in mm



TYPE	A0	B0	K0	D	E	W	P	P0	P2
MIDA1010T	10.2	10.7	11.5	1.55	1.75	24	16	4	2

9 Recommended Pattern



TYPE	A(mm)	B(mm)	C(mm)	D(mm)
MIDA1010T	4.05	2.85	2.10	3.85

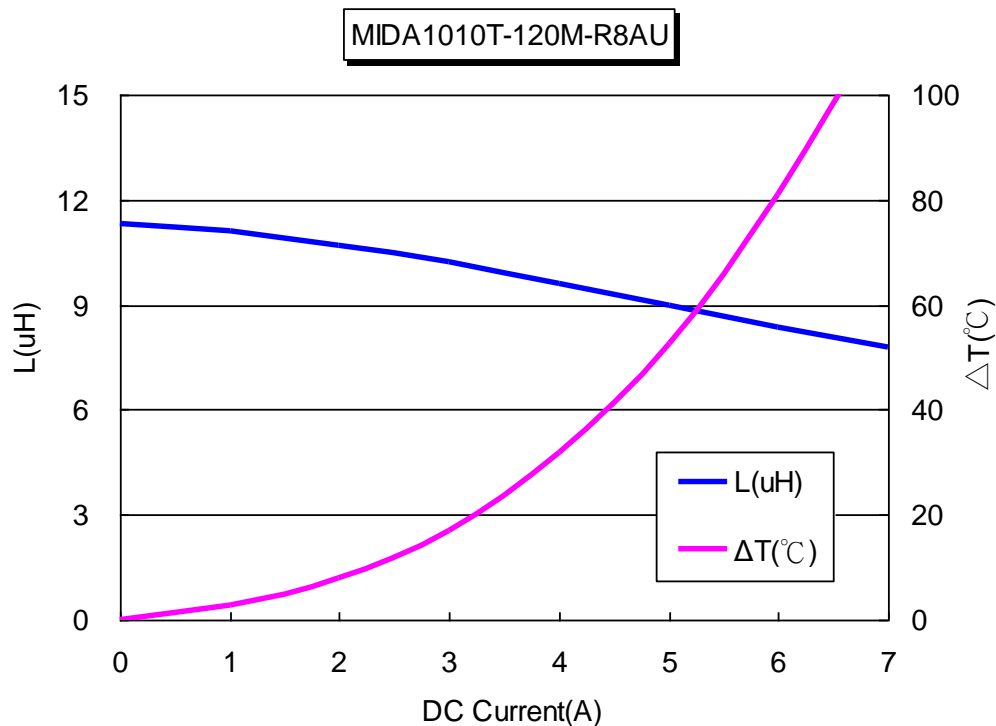
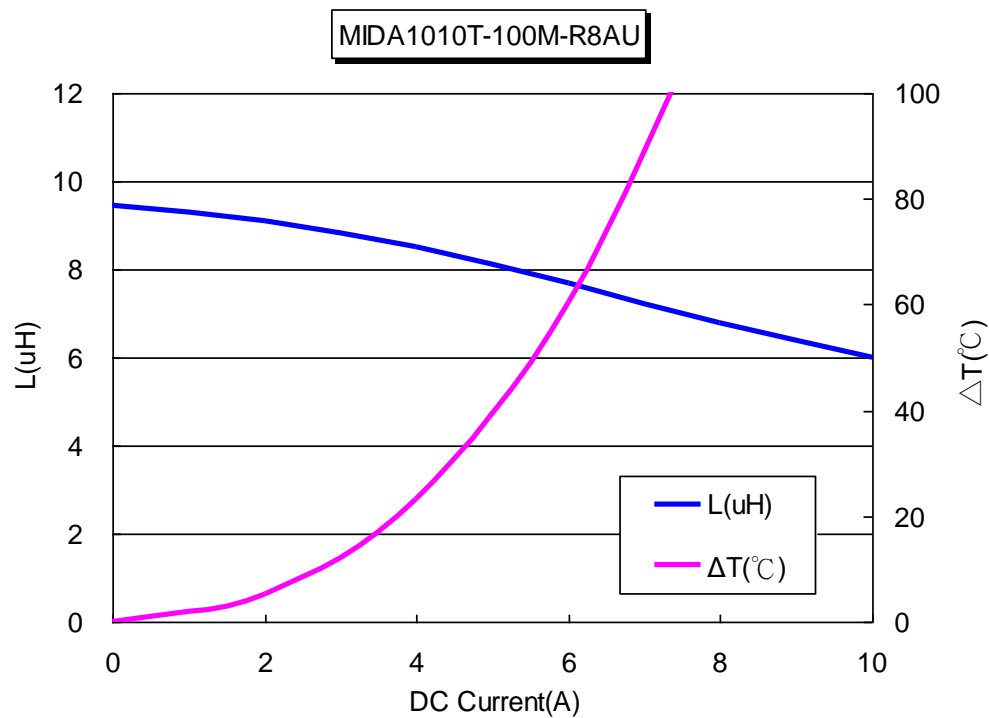
10 Note:

1. Please make sure that your product has been evaluated and confirmed against your specifications when our product is mounted to your product.
2. Do not knock nor drop.
3. All the items and parameters in this product specification have been prescribed on the premise that our product is used for the purpose, under the condition and in the environment agreed upon between you and us. You are requested not to use our product deviating from such agreement.
4. Please keep the distance between transformer/coil and other components (refer to the standard IEC 950)
5. The moisture sensitivity level (MSL) of products is classified as level 1.

MIDA1010T Series Specification

AEC-Q200

11 Graph:





ISO9001 & ISO14001 & TS16949

CHILISIN ELECTRONICS CORP.

MIDA1010T Series Specification

AEC-Q200

12 Graph:

