

MIP5510MS

Silicon MOS FET type integrated circuit

■ Features

- Worldwide input voltage, 80 VAC to 280 VAC
- Typical LED peak current: 0.5 A
(Peak current can be adjusted in two-stage corresponding to the input voltage.)
- Dimmer control function: EX-pin voltage range, 0 V to 3 V
- Function to set input voltage that can be driven: L-pin voltage range
- Over temperature protection for IPD (Auto-restart)

■ Applications

- LED-lighting, HB-LED drive circuit

■ Package

- Code
DIP7-A1
- Pin Name

1. VDD	5. DRAIN
2. EX	6. N.C.
3. L	7. SOURCE
4. VIN	8. SOURCE

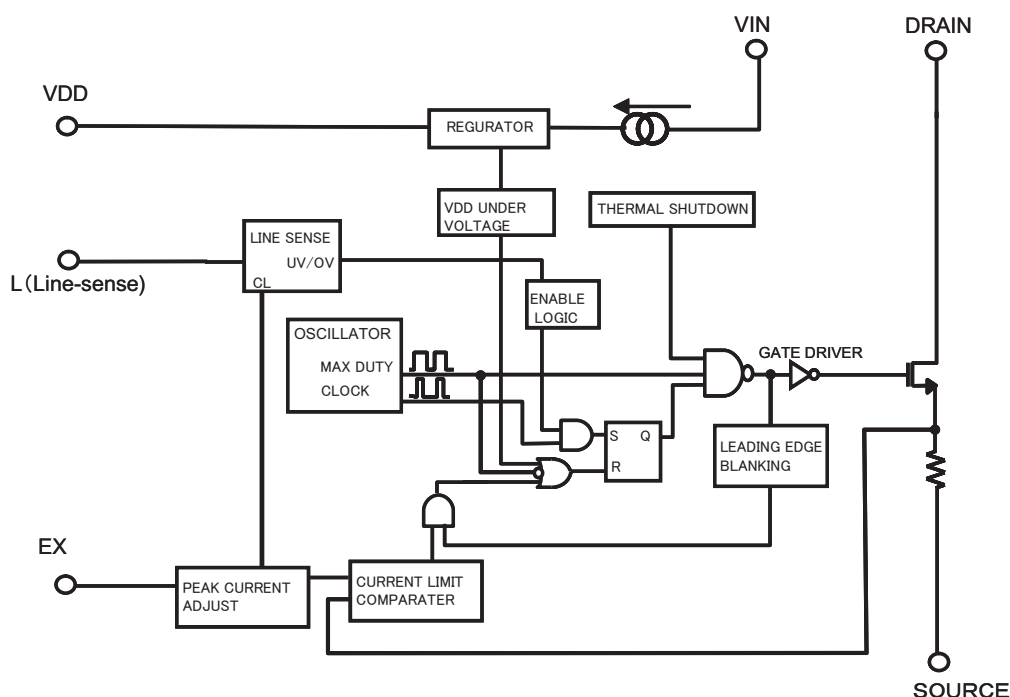
■ Marking Symbol: MIP551

■ Absolute Maximum Ratings $T_a = 25^{\circ}\text{C} \pm 3^{\circ}\text{C}$

Parameter	Symbol	Rating	Unit
DRAIN voltage	VD	-0.3 to +700	V
VIN voltage	VIN	-0.3 to +440	V
Input DC supply voltage	VINDC	440	V
VDD voltage	VDD	-0.3 to +7.0	V
LINE SENSE Pin voltage	VL	-0.3 to +6.0	V
External dimmer control pin voltage	VEX	-0.3 to +6.0	V
Output peak current *	IDP	1.1	A
Channel temperature	Tch	150	°C
Storage temperature	Tstg	-55 to +150	°C
Operating ambient temperature	Top	-40 to +80	°C

Note) *: Leading edge blanking delay: $t_{on}(\text{BLK})$ + Peak current limit delay: $t_d(\text{OCL})$

■ Block Diagram



■ Electrical Characteristics $T_a = 25^\circ\text{C} \pm 3^\circ\text{C}$

Parameter	Symbol	Conditions	Min	Typ	Max	Unit
Control functions						
Output frequency	fosc	VDD = VDD(ON) + 0.2 V, VD = 5 V, VL = 1.5 V, VEX = 0 V	35.2	44	52.8	kHz
Skip mode output frequency *	fskip	VDD = VDD(ON) + 0.2 V, VL = 1.5 V, PW(on) < 350 ns	$0.4 \times$ fosc	$0.5 \times$ fosc	$0.625 \times$ fosc	kHz
Maximum duty cycle	MAXDC	VDD = VDD(ON) + 0.2 V, VD = 5 V, VL = 1.5 V, VEX = 0 V	46	52	58	%
VDD pin voltage	VDD(ON)	VD = 5 V, VL = 1.5 V, VEX = 0 V	5.3	5.8	6.4	V
VDD under voltage lockout threshold	VUV	VD = 5 V, VL = 1.5 V, VEX = 0 V	4.6	5.1	5.7	V
Operating current under non-switching	IDD(OFF)	VDD = VDD(ON) + 0.2 V, VD = 5 V, VL = 0 V, VEX = 0 V	0.3	0.6	0.85	mA
Operating current under switching	IDD(ON)	VDD = VDD(ON) + 0.2 V, VD = 5 V, VL = 1.5 V, VEX = 0 V	0.4	0.8	1.2	mA
VDD pin charge current	Ich1	VDD = 0 V, VIN = 40 V, VL = 0 V, VEX = 0 V	2.3	3.2	4.2	mA
	Ich2	VDD = 4 V, VIN = 40 V, VL = 0 V, VEX = 0 V	1.0	1.9	2.6	mA
L pin line-under voltage threshold	VL(uv)	VDD = VDD(ON) + 0.2V, VD = 5 V, VEX = 0 V *Fig. 1	0.456	0.57	0.685	V
				0.15		V
L pin line-over voltage threshold	VL(ov)	VDD = VDD(ON) + 0.2V, VD = 5 V, VEX = 0 V *Fig. 1	3.36	4.2	5.04	V
L pin voltage threshold for ILIMITL	VL(cll)	VDD = VDD(ON) + 0.2V, VD = 5 V, VEX = 0 V *Fig. 1	1.68	2.1	2.52	V
Peak current limit	ILIMIT	VDD = VDD(ON) + 0.2 V, VL = 1.5 V, VEX = 0 V *Fig. 1, 3	0.45	0.5	0.55	A
Peak current limit over VL(cll)	ILIMITL	VDD = VDD(ON) + 0.2 V, VL = 2.5 V, VEX = 0 V *Fig. 1	$0.88 \times$ ILIMIT	$0.93 \times$ ILIMIT	$0.98 \times$ ILIMIT	A
Peak current limit at VEX = 2.0 V *	IEX2	VDD = VDD(ON) + 0.2 V, VL = 1.5 V, VEX = 2.0 V *Fig. 2	0.174	0.2	0.226	A
Peak current limit reduction slope *	SLPIL	VDD = VDD(ON) + 0.2 V, VL = 1.5 V, SLPIL = (Ilimit (at EX = 1 V) – IEX2) / ((1-2)*ILIMIT) *Fig. 2		-30		%/V
EX pin voltage at operation stop	VEX(off)	VDD = VDD(ON) + 0.2 V, VL = 1.5 V *Fig. 2	2.55	2.85	3.15	V
VEX(off) hysteresis voltage *	VEX(hys)	VDD = VDD(ON) + 0.2 V, VL = 1.5 V *Fig. 2		50		mV

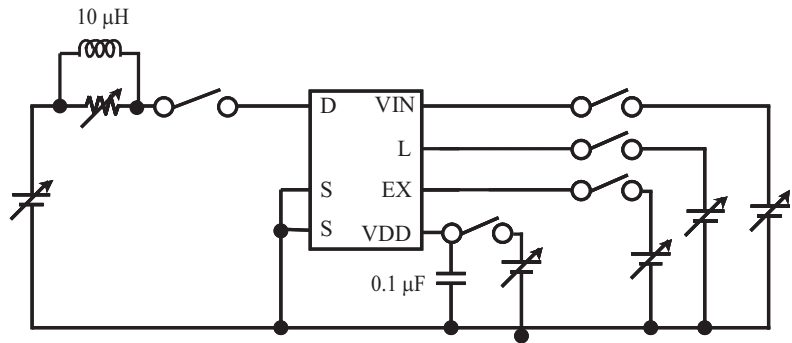
Note) *: Design guaranteed item

■ Electrical Characteristics (continued) T_a = 25°C±3°C

Parameter	Symbol	Conditions	Min	Typ	Max	Unit
Circuit protections						
Leading edge blanking delay *	ton(BLK)	VDD = VDD(ON) + 0.2 V, VL = 1.5 V, EX = 0 V	100	150	200	ns
Peak current limit delay *	td(OCL)		100	150	200	ns
Thermal shutdown junction temperature *	TOTPJ		125	140	150	°C
Thermal shutdown hysteresis *	TOTPJ(hys)			70		°C
Output						
ON-state resistance	RDS(ON)	VDD = VDD(ON) + 0.2 V, VL = 1.5 V, VEX = 0 V, ID = 300 mA		12	13.6	Ω
OFF-state drain leakage current	IDSS	VDD = VDD(ON) + 0.2 V, VL = 0 V, VD = 650 V		5.0	20	μA
Drain breakdown voltage	VDSS	VDD = VDD(ON) + 0.2 V, VL = 0 V, ID = 100 μA	700			V
OFF-state VIN leakage current	IDSS(IN)	VDD = VDD(ON) + 0.2 V, VL = 0 V, VIN = 420 V		20	50	μA
Rise time	t _r	VDD = VDD(ON) + 0.2 V, VD = 5 V,		150		ns
Fall time	t _f	VL = 1.5 V, VEX = 0 V *Fig. 4		50		ns
High Voltage Input						
VIN supply minimum voltage	VIN(MIN)	VD = 5 V, VL = 1.5 V, VEX = 0 V			45	V
Drain supply minimum voltage	VD(MIN)	VL = 1.5 V, VEX = 0 V			45	V

Note) *: Design guaranteed item

1. Measurement circuit



■ Electrical Characteristics (continued) $T_a = 25^{\circ}\text{C} \pm 3^{\circ}\text{C}$

2. Figure.1 VL typical characteristic

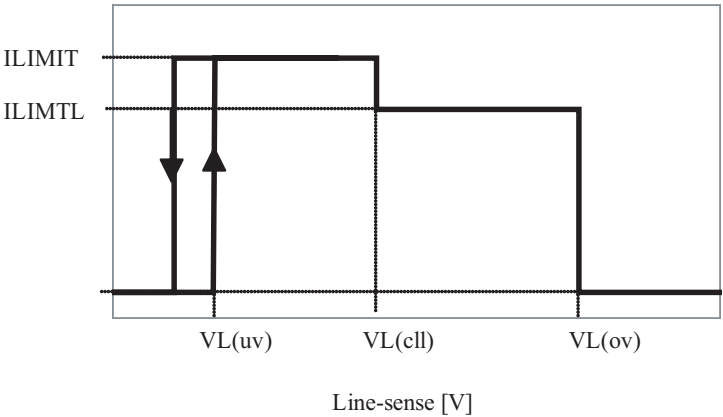


Figure2 ILIMIT vs. VEX typical characteristic

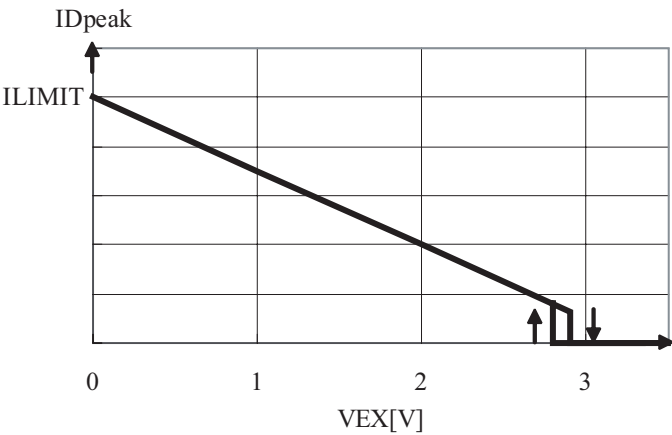
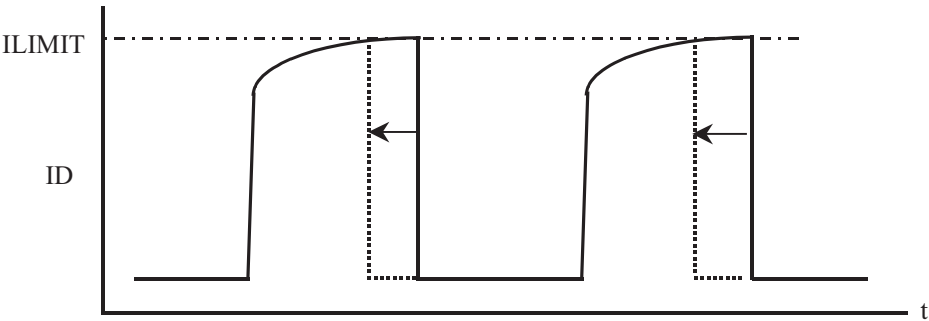
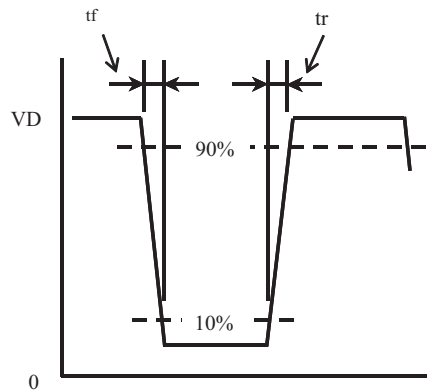


Figure. 3 ILIMIT measurement



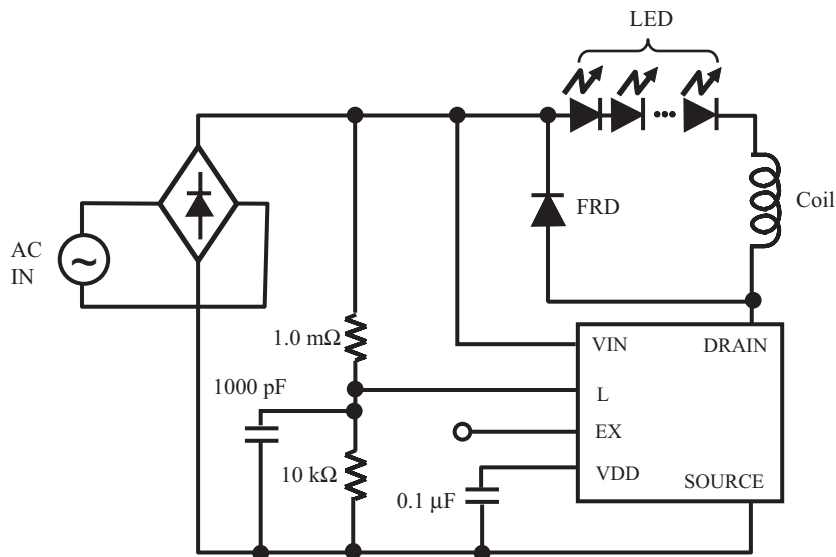
■ Electrical Characteristics (continued) $T_a = 25^\circ\text{C} \pm 3^\circ\text{C}$

Figure. 4 t_r, t_f measurement



■ Application Circuit Example

Note) It is an example of the circuit, and no one to guarantee the power supply circuit.



■ Usage Notes

Connect a ceramic capacitor with value $> 0.1 \mu\text{F}$ between VDD pin and GND.

The IPD has risks for break-down or burst or giving off smoke in following conditions. Avoid the following use.

Fuse should be added at the input side or connect zener diode between control pin and GND, etc as a countermeasure to pass regulatory Safety Standard. Concrete countermeasure could be provided individually. However, customer should make the final judgment.

- (1) DRAIN pin and VDD pin are reversed, and IPD is inserted in the power supply board.
- (2) DRAIN pin short to VDD pin.
- (3) DRAIN pin short to EX pin.
- (4) DRAIN pin short to L pin.
- (5) VIN pin short to VDD pin.
- (6) VIN pin short to EX pin.
- (7) VIN pin short to L pin.
- (8) VIN pin short to DRAIN pin on operating.

Request for your special attention and precautions in using the technical information and semiconductors described in this book

- (1) If any of the products or technical information described in this book is to be exported or provided to non-residents, the laws and regulations of the exporting country, especially, those with regard to security export control, must be observed.
- (2) The technical information described in this book is intended only to show the main characteristics and application circuit examples of the products. No license is granted in and to any intellectual property right or other right owned by Panasonic Corporation or any other company. Therefore, no responsibility is assumed by our company as to the infringement upon any such right owned by any other company which may arise as a result of the use of technical information described in this book.
- (3) The products described in this book are intended to be used for general applications (such as office equipment, communications equipment, measuring instruments and household appliances), or for specific applications as expressly stated in this book.
Consult our sales staff in advance for information on the following applications:
 - Special applications (such as for airplanes, aerospace, automotive equipment, traffic signaling equipment, combustion equipment, life support systems and safety devices) in which exceptional quality and reliability are required, or if the failure or malfunction of the products may directly jeopardize life or harm the human body.

It is to be understood that our company shall not be held responsible for any damage incurred as a result of or in connection with your using the products described in this book for any special application, unless our company agrees to your using the products in this book for any special application.
- (4) The products and product specifications described in this book are subject to change without notice for modification and/or improvement. At the final stage of your design, purchasing, or use of the products, therefore, ask for the most up-to-date Product Standards in advance to make sure that the latest specifications satisfy your requirements.
- (5) When designing your equipment, comply with the range of absolute maximum rating and the guaranteed operating conditions (operating power supply voltage and operating environment etc.). Especially, please be careful not to exceed the range of absolute maximum rating on the transient state, such as power-on, power-off and mode-switching. Otherwise, we will not be liable for any defect which may arise later in your equipment.
Even when the products are used within the guaranteed values, take into the consideration of incidence of break down and failure mode, possible to occur to semiconductor products. Measures on the systems such as redundant design, arresting the spread of fire or preventing glitch are recommended in order to prevent physical injury, fire, social damages, for example, by using the products.
- (6) Comply with the instructions for use in order to prevent breakdown and characteristics change due to external factors (ESD, EOS, thermal stress and mechanical stress) at the time of handling, mounting or at customer's process. When using products for which damp-proof packing is required, satisfy the conditions, such as shelf life and the elapsed time since first opening the packages.
- (7) This book may be not reprinted or reproduced whether wholly or partially, without the prior written permission of our company.

Precautions on the Sales of IPDs

- 1) The sale and/or the export of IPD products to any customer or customers located in any country other than Japan is expressly prohibited by the Agreement made and executed by and between Power Integrations, Inc. and Panasonic Corporation.
 - 2) IPD products purchased from our company, or its authorized agents, hereinafter referred to as our company, shall be used only for production purposes by those parties who have duly purchased IPD products. Those who have purchased IPD products shall not use such IPD products in unmodified form for re-sale, loan, or sample shipment for evaluation purposes to any other parties.
 - 3) If a party who has duly purchased IPD products subcontracts its production to any other parties, including its subsidiaries or any other third parties inside and/or out of Japan, and the IPD products are consigned to such subcontracting parties thereat, such party is obligated to monitor and control the quantity of IPD products to prevent any of the aforementioned re-sale, loan or sample shipments from taking place.
 - 4) In the event that any actual or threatened breach or violation of any of the above mentioned 1, 2, or 3, has occurred or is about to occur, our company will hold all shipments of IPD products and may request the party alleged to be responsible for such occurrence for necessary.
- Note) The products of MIP50□, MIP51□, and MIP7□□ are excluded from above-mentioned precautions, 1) to 3).

Attached table "IPD availability by customer"

Parts No.			Companies/areas to which products can be sold	Companies/areas to which products cannot be sold	Application
MIP0□□□ MIP3□□□ MIP9L□□	MIP1□□ MIP4□□□	MIP2□□□ MIP9A□□	<ul style="list-style-type: none"> • Japanese companies in Japan • Japanese companies in Asia (50% or more owned) 	<ul style="list-style-type: none"> • Companies in European and American countries • Asian companies in Asia • Other local companies 	<ul style="list-style-type: none"> • For power supply • For DC-DC converter
MIP55□ MIP9E□□	MIP803/804	MIP816/826	<ul style="list-style-type: none"> • Japanese companies in Japan • Japanese companies in Asia (50% or more owned) • Asian companies in Asia 	<ul style="list-style-type: none"> • Companies in European and American countries • Other local companies 	<ul style="list-style-type: none"> • For power supply • For EL driver • For LED lighting driver
MIP50□	MIP51□	MIP7□□	<ul style="list-style-type: none"> • No restrictions in terms of contract 	<ul style="list-style-type: none"> • No restrictions in terms of contract 	<ul style="list-style-type: none"> • For lamp driver/ car electronics accessories

Note) If you have any inquiries about sales, contact Corporate Marketing & Sales Division of our company.