

Legacy Device: Motorola MC1490

The ML1490 is an integrated circuit featuring wide-range AGC for use in RF/IF amplifiers and audio amplifiers.

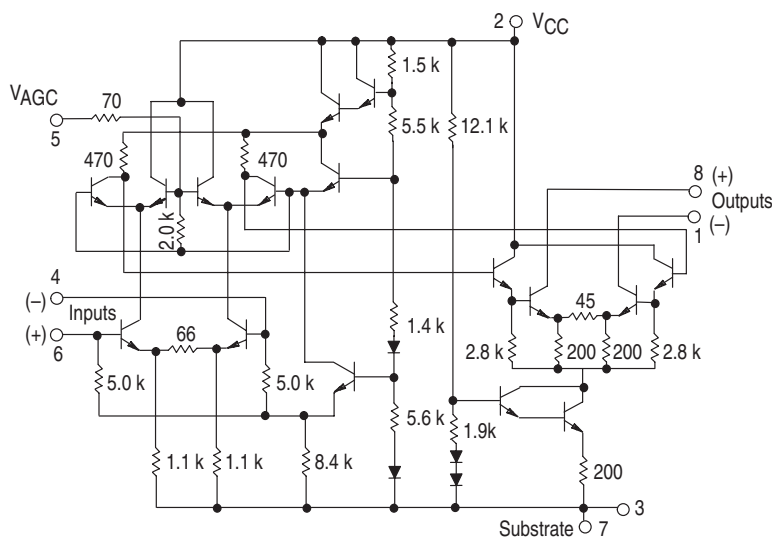
- High Power Gain:
  - 50 dB Typ at 10 MHz
  - 45 dB Typ at 60 MHz
  - 35 dB Typ at 100 MHz
- Wide Range AGC: 60 dB Min, DC to 60 MHz
- 6.0 V to 15 V Operation, Single Polarity Supply
- Operating Temperature Range  $T_A = -40^\circ$  to  $+85^\circ\text{C}$

Note: See Similar ML1350 For Possible Option

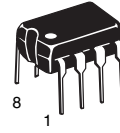
#### MAXIMUM RATINGS ( $T_A = +25^\circ\text{C}$ , unless otherwise noted.)

Rating	Symbol	Value	Unit
Power Supply Voltage	$V_{CC}$	+18	Vdc
AGC Supply	$V_{AGC}$	$V_{CC}$	Vdc
Input Differential Voltage	$V_{ID}$	5.0	Vdc
Operating Temperature Range	$T_A$	$-40$ to $+85$	$^\circ\text{C}$
Storage Temperature Range	$T_{stg}$	$-65$ to $+150$	$^\circ\text{C}$
Junction Temperature	$T_J$	+150	$^\circ\text{C}$

#### Representative Schematic Diagram



Pins 3 and 7 should both be connected to circuit ground.



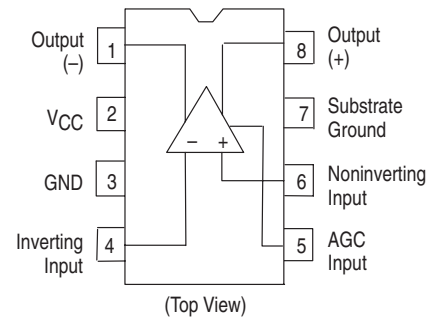
**P DIP 8 = PP**  
PLASTIC PACKAGE  
CASE 626

#### CROSS REFERENCE/ORDERING INFORMATION

PACKAGE	MOTOROLA	LANSDALE
P DIP 8	MC1490P	ML1490PP

Note: Lansdale lead free (Pb) product, as it becomes available, will be identified by a part number prefix change from **ML** to **MLE**.

#### PIN CONNECTIONS



#### SCATTERING PARAMETERS

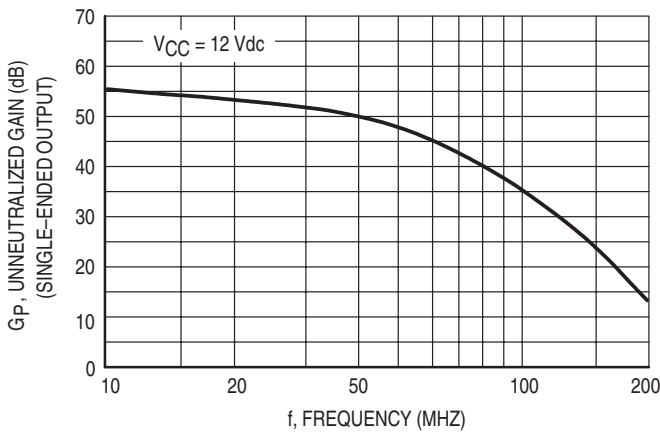
( $V_{CC} = +12$  Vdc,  $T_A = +25^\circ\text{C}$ ,  $Z_0 = 50 \Omega$ )

Parameter	Symbol	f = MHz		Unit
		30	60	
Input Reflection Coefficient	$ S_{11} $ $\theta_{11}$	0.95 -7.3	0.93 -16	- deg
Output Reflection Coefficient	$ S_{22} $ $\theta_{22}$	0.99 -3.0	0.98 -5.5	- deg
Forward Transmission Coefficient	$ S_{21} $ $\theta_{21}$	16.8 128	14.7 64.3	- deg
Reverse Transmission Coefficient	$S_{12}$ $\theta_{12}$	0.00048 84.9	0.00092 79.2	- deg

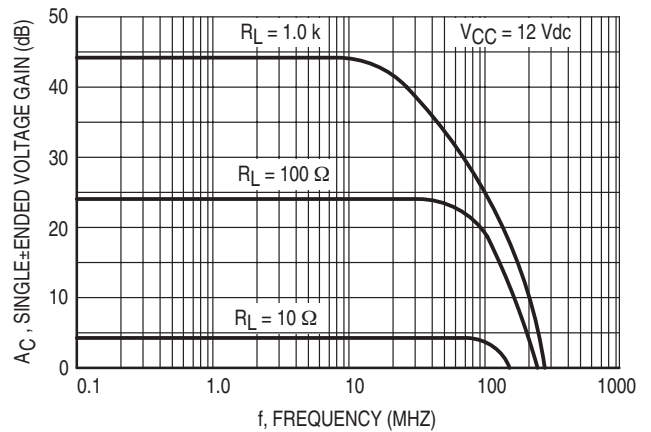
**ELECTRICAL CHARACTERISTICS** ( $V_{CC} = 12\text{ Vdc}$ ,  $f = 60\text{ MHz}$ ,  $BW = 1.0\text{ MHz}$ ,  $T_A = 25^\circ\text{C}$ )

Characteristic	Figure	Symbol	Min	Typ	Max	Unit
Power Supply Current Drain	–	$I_{CC}$	–	–	17	mA
AGC Range (AGC) 5.0 V Min to 7.0 V Max	19	$M_{AGC}$	–60	–	–	dB
Output Stage Current (Sum of Pins 1 and 8)	–	$I_O$	4.0	–	7.5	mA
Single-Ended Power Gain $R_S = R_L = 50\ \Omega$	19	$G_P$	40	–	–	dB
Noise Figure $R_S = 50\ \Omega$	19	NF	–	6.0	–	dB
Power Dissipation	–	$P_D$	–	168	204	mW

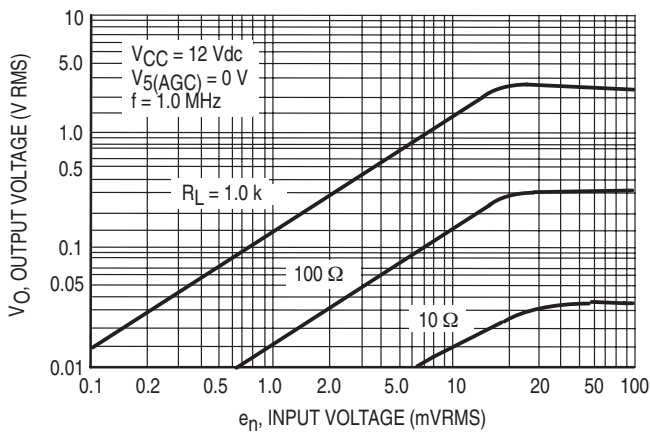
**Figure 1. Unneutralized Power Gain versus Frequency (Tuned Amplifier, See Figure 19)**



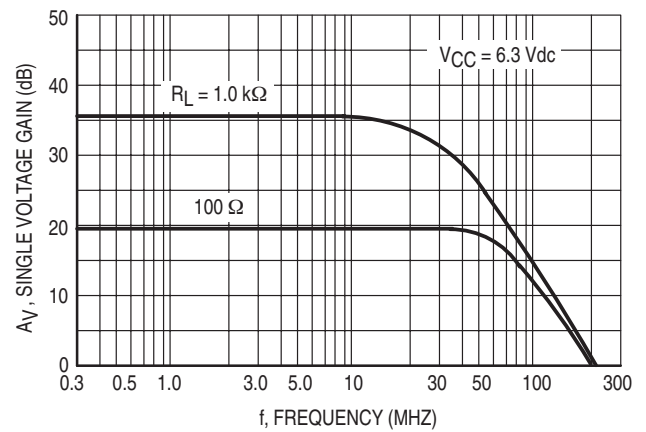
**Figure 2. Voltage Gain versus Frequency (Video Amplifier, See Figure 20)**



**Figure 3. Dynamic Range: Output Voltage versus Input Voltage (Video Amplifier, See Figure 20)**

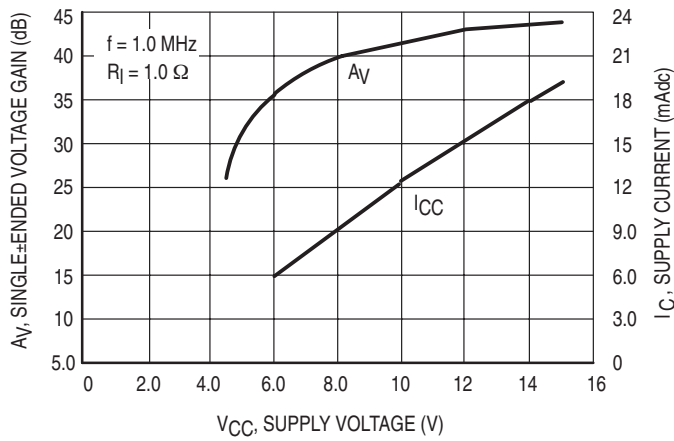


**Figure 4. Voltage Gain versus Frequency (Video Amplifier, See Figure 20)**

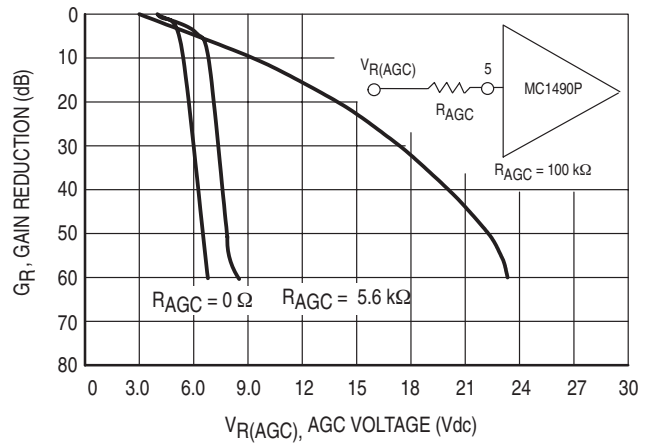


Legacy Applications Information

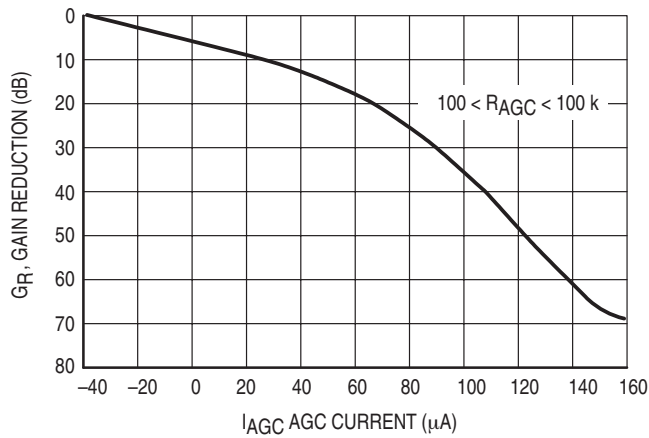
**Figure 5. Voltage Gain and Supply Current versus Supply Voltage (Video Amplifier, See Figure 20)**



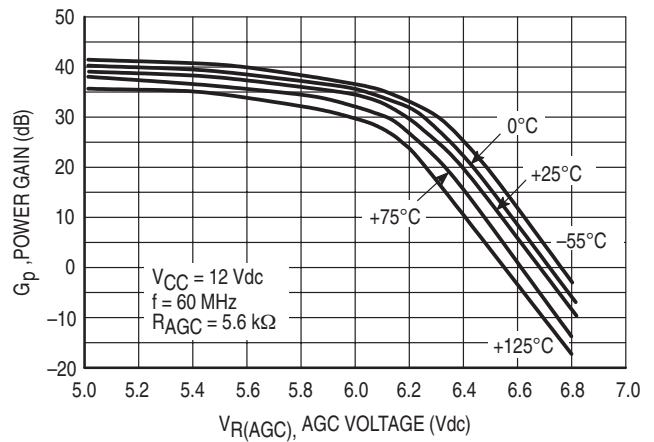
**Figure 6. Typical Gain Reduction versus AGC Voltage**



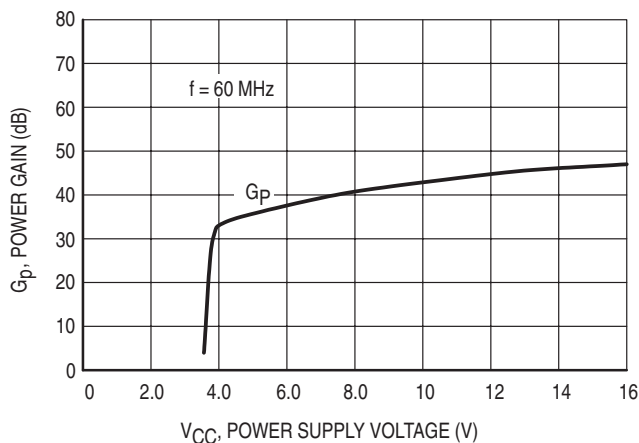
**Figure 7. Typical Gain Reduction versus AGC Current**



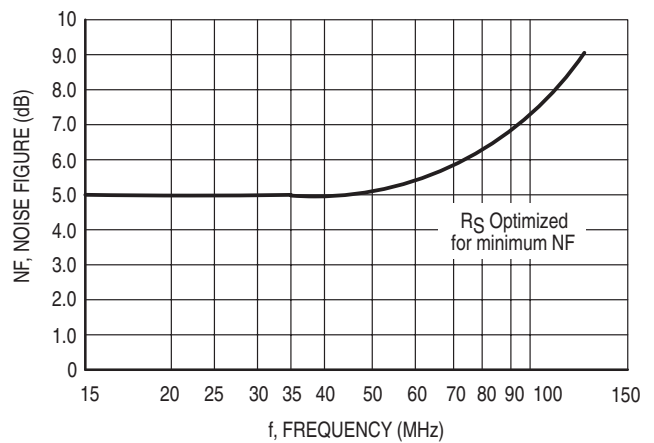
**Figure 8. Fixed Tuned Power Gain Reduction versus Temperature (See Test Circuit, Figure 19)**



**Figure 9. Power Gain versus Supply Voltage (See Test Circuit, Figure 19)**

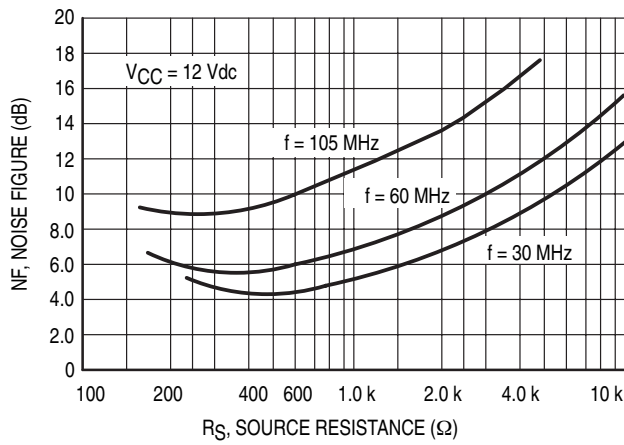


**Figure 10. Noise Figure versus Frequency**

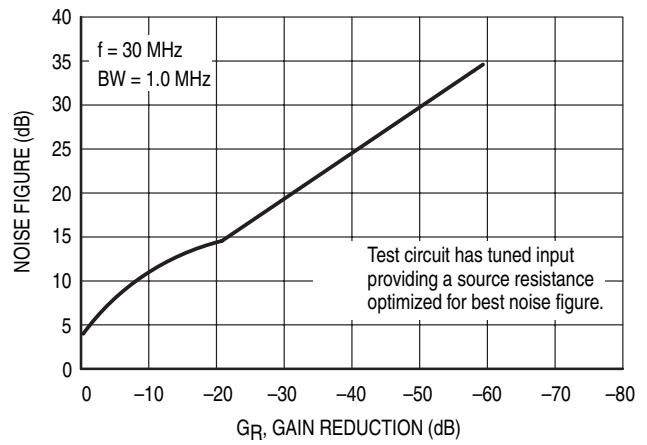


Legacy Applications Information

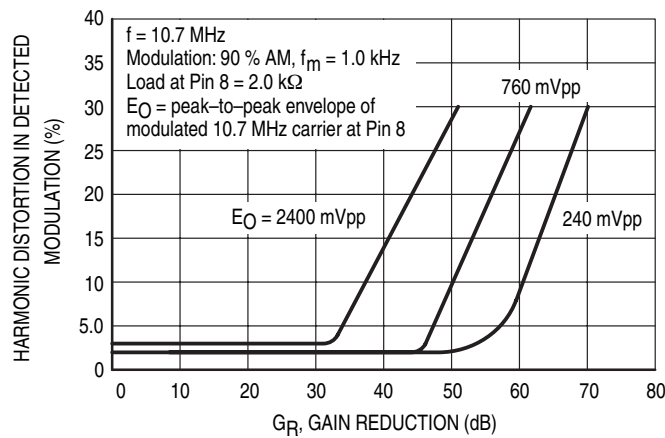
**Figure 11. Noise Figure versus Source Resistance**



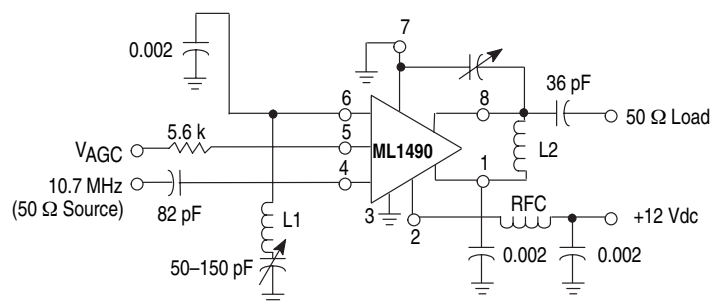
**Figure 12. Noise Figure versus AGC Gain Reduction**



**Figure 13. Harmonic Distortion versus AGC Gain Reduction for AM Carrier (For Test Circuit, See Figure 14)**



**Figure 14. 10.7 MHz Amplifier Gain 55 dB, BW 100 kHz**



L1 = 24 turns, #22 AWG wire on a T12-44 micro metal Toroid core (-124 pF)

L2 = 20 turns, #22 AWG wire on a T12-44 micro metal Toroid core (-100 pF)

Legacy Applications Information

Figure 15.  $S_{11}$  and  $S_{22}$ , Input and Output Reflection Coefficient

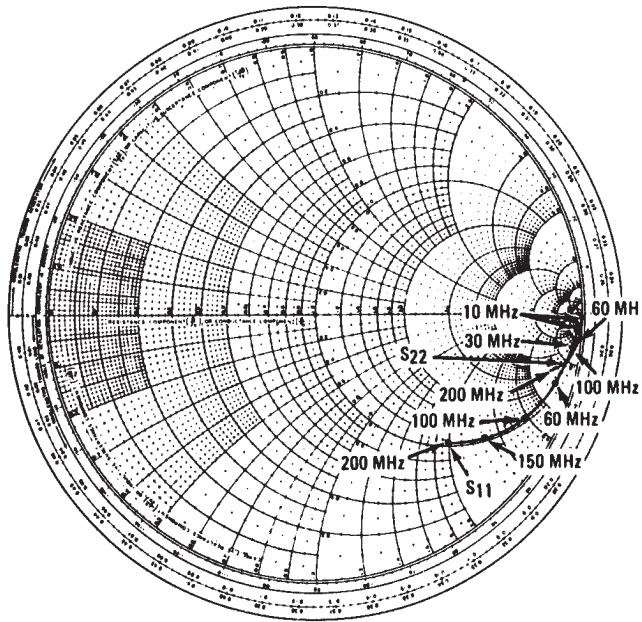


Figure 16.  $S_{11}$  and  $S_{22}$ , Input and Output Reflection Coefficient

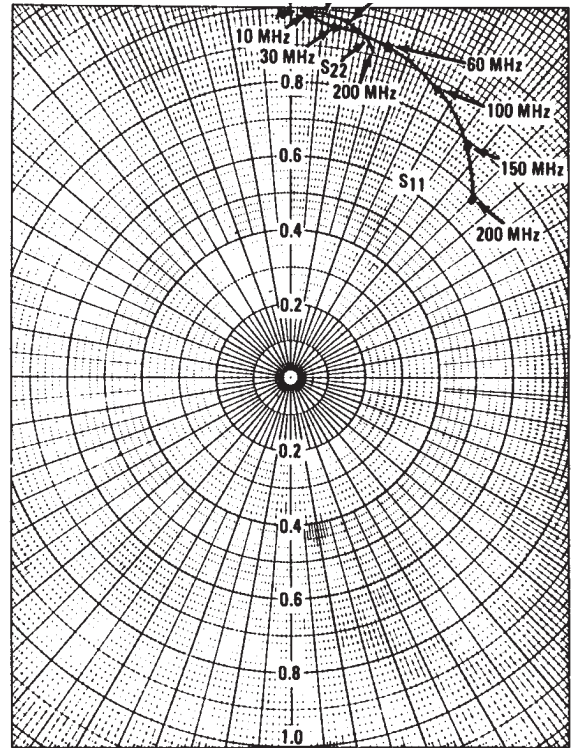


Figure 17.  $S_{21}$ , Forward Transmission Coefficient (Gain)

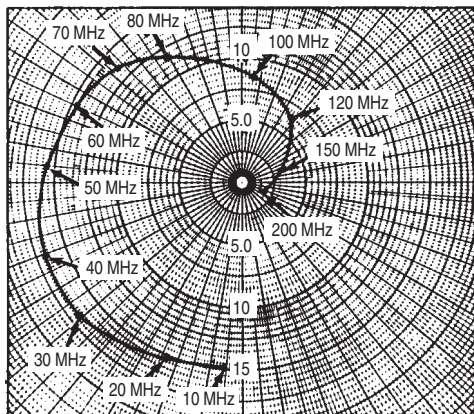
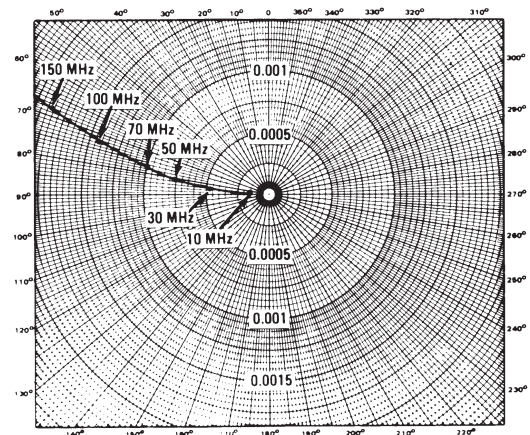
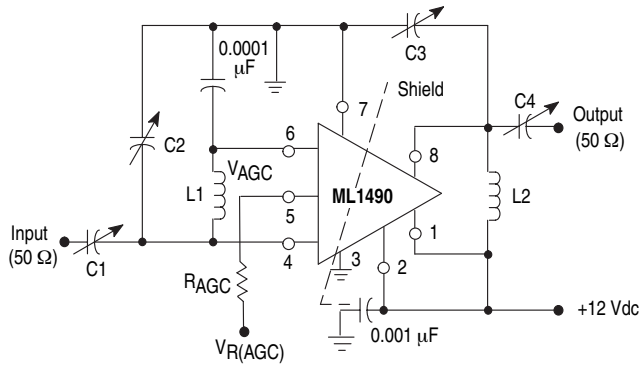


Figure 18.  $S_{12}$ , Reverse Transmission Coefficient (Feedback)



Legacy Applications Information

Figure 19. 60 MHz Power Gain Test Circuit



L1 = 7 turns, #20 AWG wire, 5/16" Dia., 5/8" long  
L2 = 6 turns, #14 AWG wire, 9/16" Dia., 3/4" long  
C1, C2, C3 = (1-30) pF  
C4 = (1-10) pF

Figure 20. Video Amplifier

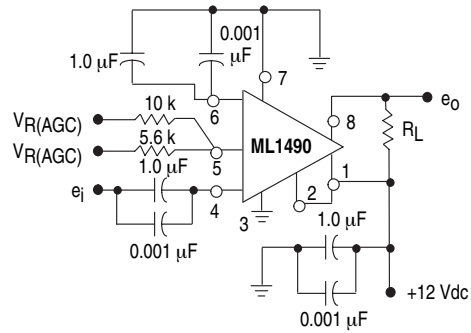
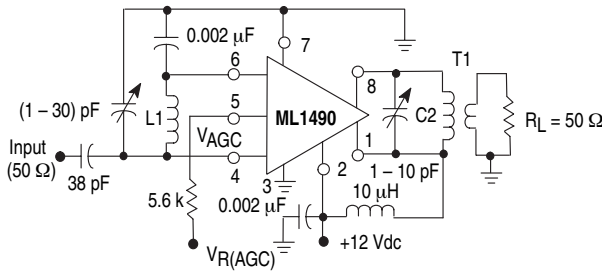
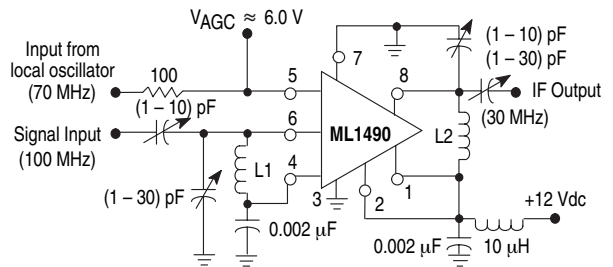


Figure 21. 30 MHz Amplifier  
(Power Gain = 50 dB, BW 1.0 MHz)



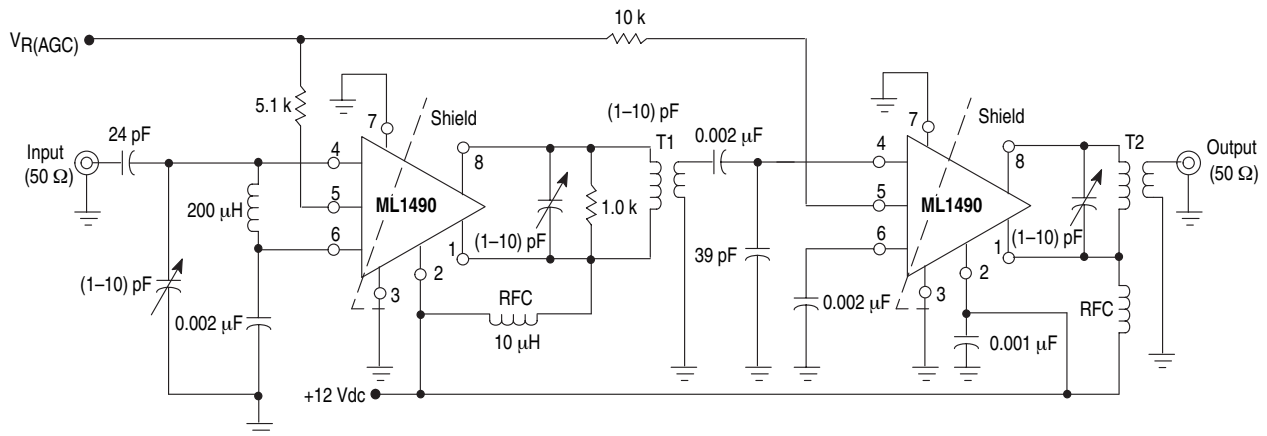
L1 = 12 turns, #22 AWG wire on a Toroid core, (T37-6 micro metal or equiv).  
T1: Primary = 17 turns, #20 AWG wire on a Toroid core, (T44-6).  
Secondary = 2 turns, #20 AWG wire.

Figure 22. 100 MHz Mixer



L1 = 5 turns, #16 AWG wire, 1/4", ID Dia., 5/8" long  
L2 = 16 turns, #20 AWG wire on a Toroid core, (T44-6).

Figure 23. Two-Stage 60 MHz IF Amplifier (Power Gain 80 dB, BW 1.5 MHz)

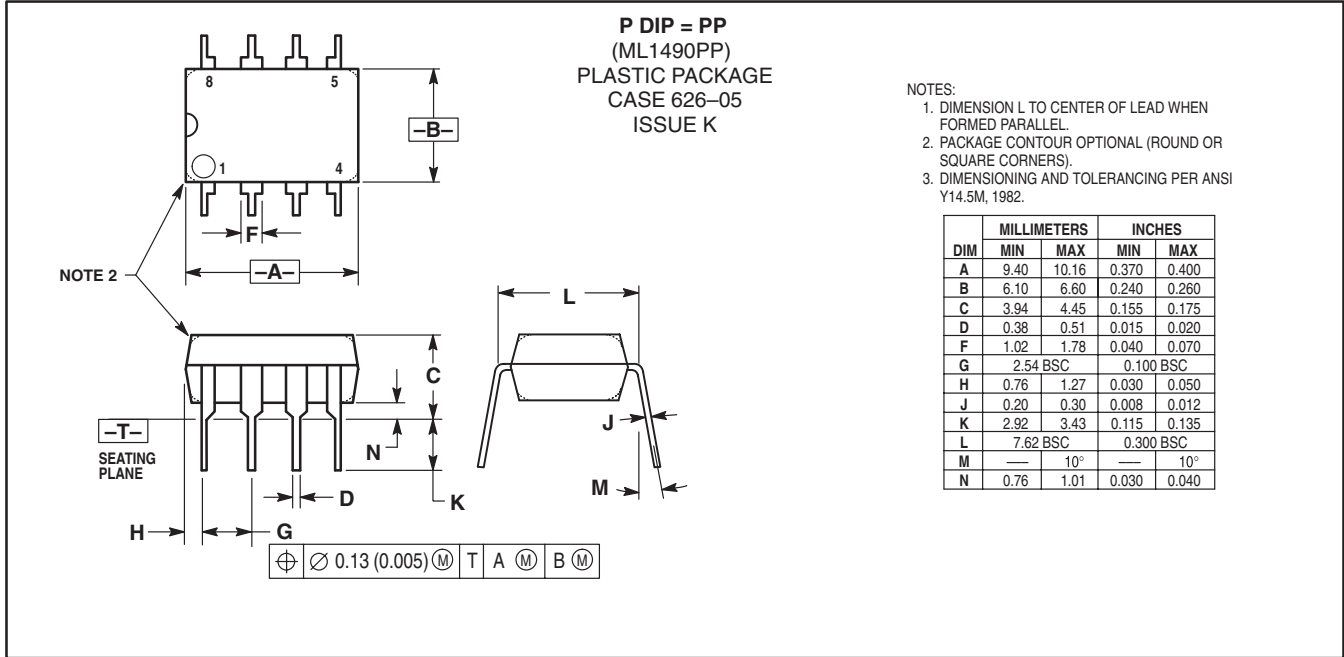


T1: Primary Winding = 15 turns, #22 AWG wire, 1/4" ID Air Core  
Secondary Winding = 4 turns, #22 AWG wire,  
Coefficient of Coupling ≈ 1.0

T2: Primary Winding = 10 turns, #22 AWG wire, 1/4" ID Air Core  
Secondary Winding = 2 turns, #22 AWG wire,  
Coefficient of Coupling ≈ 1.0



OUTLINE DIMENSIONS



Lansdale Semiconductor reserves the right to make changes without further notice to any products herein to improve reliability, function or design. Lansdale does not assume any liability arising out of the application or use of any product or circuit described herein; neither does it convey any license under its patent rights nor the rights of others. "Typical" parameters which may be provided in Lansdale data sheets and/or specifications can vary in different applications, and actual performance may vary over time. All operating parameters, including "Typicals" must be validated for each customer application by the customer's technical experts. Lansdale Semiconductor is a registered trademark of Lansdale Semiconductor, Inc.