

# MICRO

MS136A/C (L)  
 MG136A/C (L)  
 MO136A/C (L)

LED SINGLE  
 DIGIT DISPLAY

## SEVEN SEGMENT NUMERIC DISPLAYS

- High efficiency GaP, GaAsP/GaP
- 0.36 inch character height
- High contrast
- Common Anode direct drive -  
 MS136A(L), MG136A(L), MO136A(L)
- Common Cathode direct drive -  
 MS136C(L), MG136C(L), MO136C(L)
- Continuous uniform segments
- Wide viewing angle

## AVAILABLE IN THREE COLORS :

- MS136A/C(L) Red
- MG136A/C(L) Green
- MO136A/C(L) Orange

## MAXIMUM RATINGS (Ta=25°C)

Reverse Voltage

VR 5V

Peak Forward Current / Segment

IF/Pulse\* 200mA

Continuous Forward Current / Segment

IF/DC 20mA

Power Dissipation

Pd 300mW

Storage Temperature Range

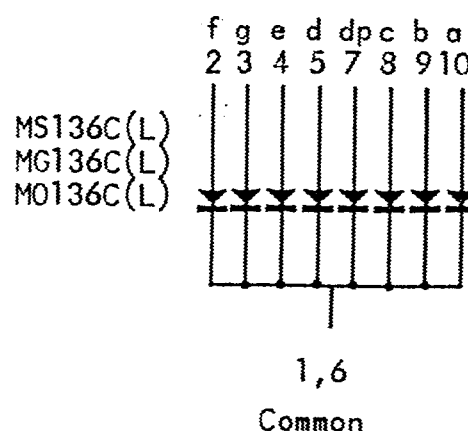
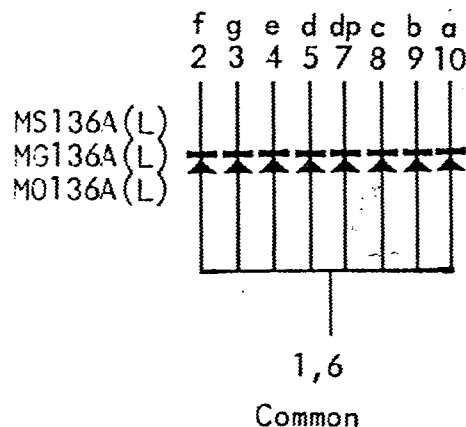
Tstg -25 to +80°C

Operating Temperature Range

Topr -20 to +75°C

\* Note : Pulse Width = 1mS, Duty Ratio = 1/10.

## CONNECTION

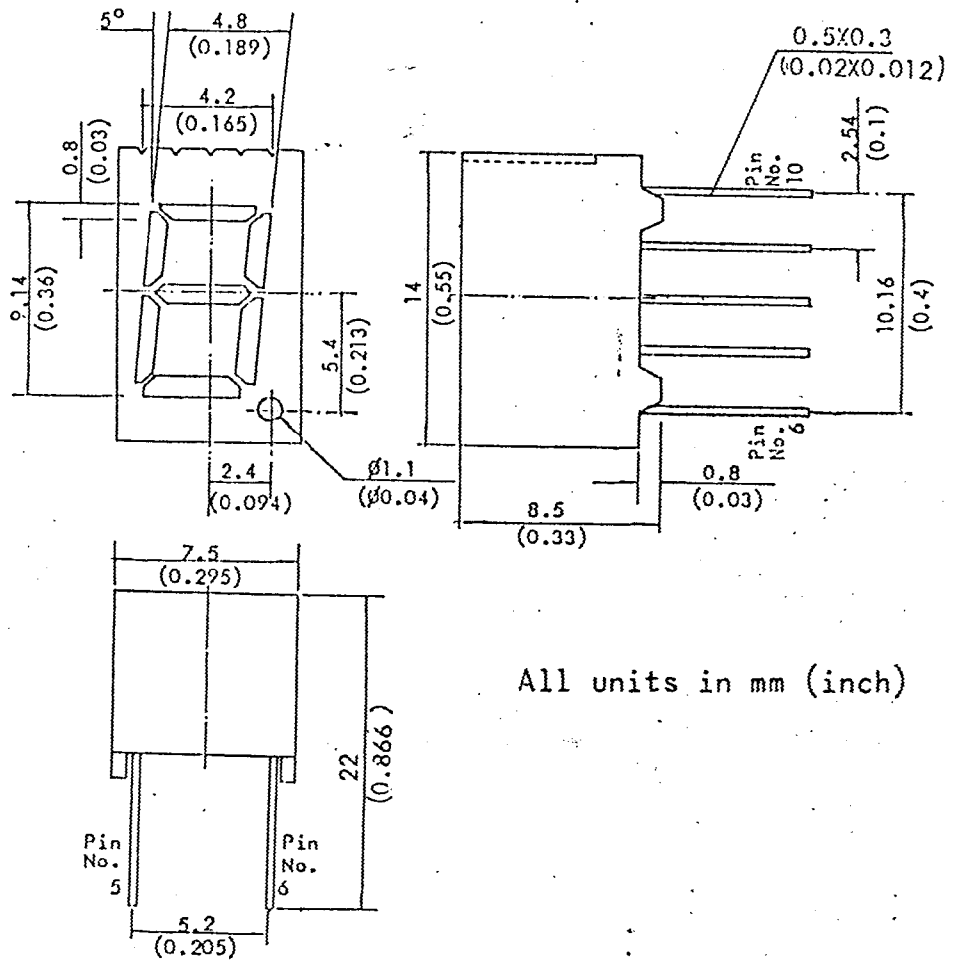


MICRO ELECTRONICS LTD. 美科有限公司

38 Hung To Road, Kwun Tong, Kowloon, Hong Kong. Cable: Microtron, Hong Kong. Telex: 43510 Micro Hx.  
 P.O. Box 9477, Kwun Tong. Tel: 3-430181-6, 3-893363, 3-892423, 3-898221

www.DataSheet4U.com

# MECHANICAL OUTLINE



All units in mm (inch)

## ELECTRO-OPTICAL CHARACTERISTICS PER SEGMENT (T<sub>a</sub>=25°C)

PARAMETER	SYMBOL	MS136A(L) MS136C(L)	MG136A(L) MG136C(L)	MO136A(L) MO136C(L)	UNIT	CONDITIONS
Forward Voltage (MAX)	VF	3	3	3	V	IF=20mA
Luminous Intensity(MIN)	IV	330	1200	1000	μcd	IF=20mA
Segment to Segment Luminous Intensity Ratio		1.5:1	1.5:1	1.5:1		IF=10mA
Wave Length At Peak Emission	λP	700	565	635	nm	
Spectral Half Width	Δλ	100	30	30	nm	