

Large-Current Choke Coils

MPC Series

[Comply with RoHS]

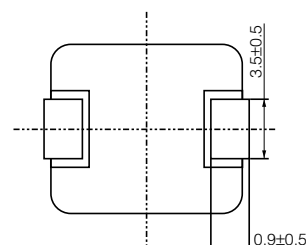
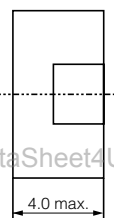
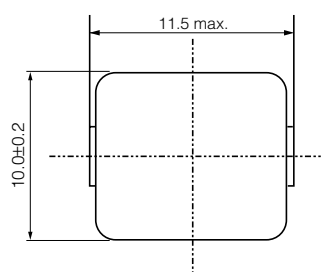


Model	Inductance (μH) at 100KHz	DC resistance (m Ω) typ.	Rated current (A)
MPC1040LR36	0.36 \pm 20%	1.05 \pm 10%	25
MPC1040LR56	0.56 \pm 20%	1.30 \pm 10%	23
MPC1250LR50	0.50 \pm 20%	0.80 \pm 10%	35

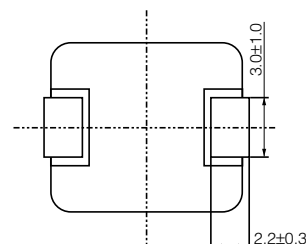
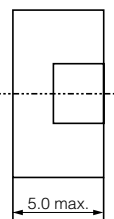
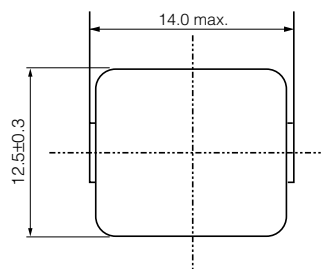
●Rated current : T=40K rise at rated current.

Shape and Dimensions

- MPC1040LR36
- MPC1040LR56



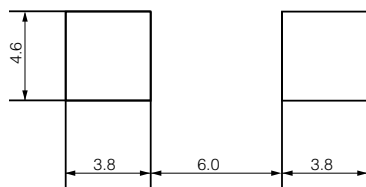
- MPC1250LR50



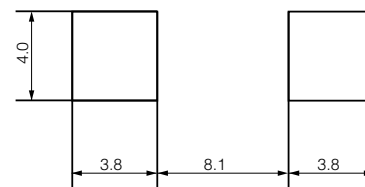
[mm]

Recommended Land Pattern

- MPC1040LR36
- MPC1040LR56



- MPC1250LR50



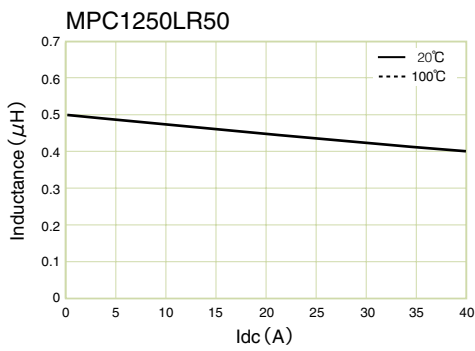
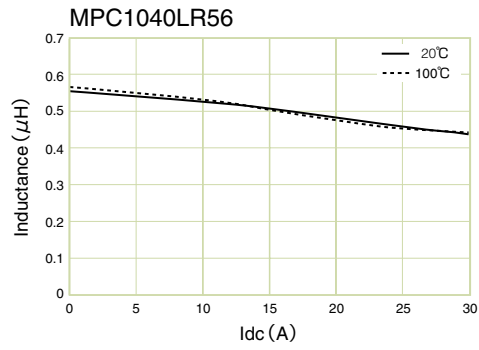
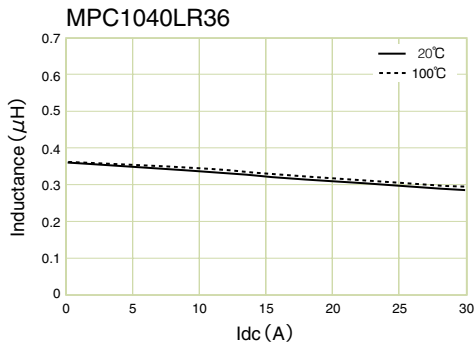
[mm]

Numbering System

MPC - 1040 - LR36

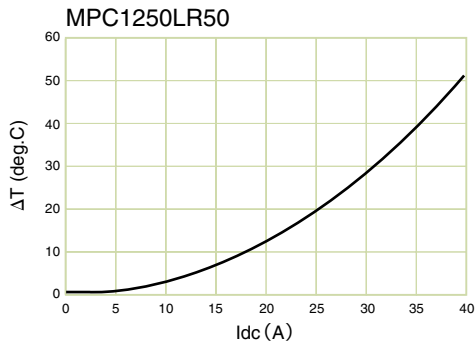
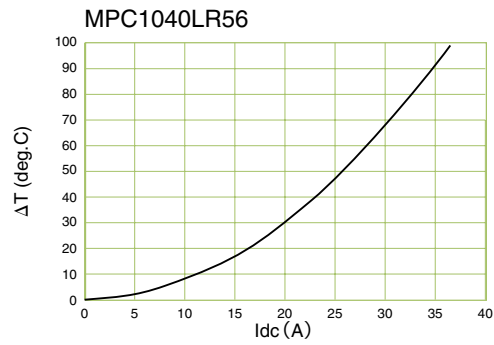
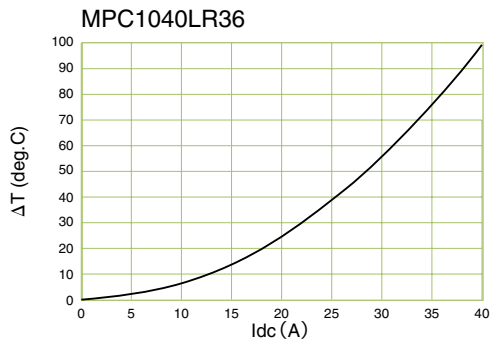
- ① Series
- ② Dimensions 10...WXD:11.5×10 mm 40...H:4.0 mm
- ③ Inductance R36...0.36 μH

DC-Superposed Characteristics



DataSheet4U.com

Temperature rise

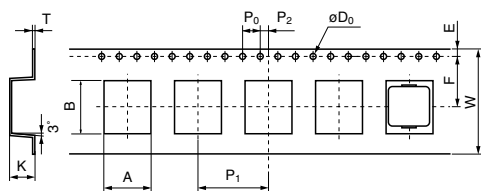


DataSheet4U.com

www.DataSheet4U.com

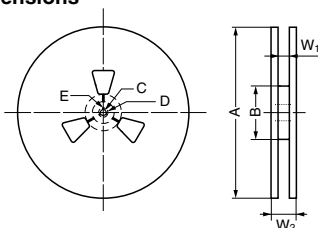
MPC1040Series (1000pcs./reel)

Dimensions of indented square hole plastic tape



											[mm]
A	B	W	F	E	P ₁	P ₂	P ₀	øD ₀	T	K	
±0.1	±0.1	±0.3	±0.1	±0.1	±0.1	±0.1	±0.1	±0.05	±0.05	±0.1	
10.5	12.1	24.0	11.5	1.75	16.0	2.0	4.0	1.55	0.4	5.2	

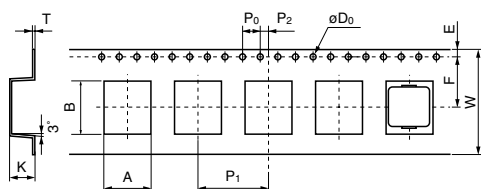
Reel dimensions



								[mm]
A	B	C	D	E	r	W ₁	W ₂	
±5.0	±5.0	±0.5	±1.0	±0.5	R1.0	±2.0	±3.0	
ø330	ø80	ø13.5	ø21.0	2.0		24.4	30.4	

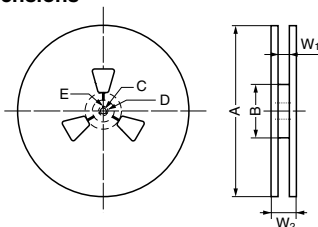
MPC1250Series (500pcs./reel)

Dimensions of indented square hole plastic tape



											[mm]
A	B	W	F	E	P ₁	P ₂	P ₀	øD ₀	T	K	
±0.2	±0.2	±0.4	±0.2	±0.2	±0.2	±0.2	±0.2	±0.02	±0.1	±0.2	
13.1	14.6	24.0	11.5	1.75	24.0	2.0	4.0	1.5	0.4	5.3	

Reel dimensions



								[mm]
A	B	C	D	E	r	W ₁	W ₂	
±2.0	±5.0	±0.5	±0.8	±0.5	R1.0	±2.0	±3.0	
ø380	ø100	ø13.0	ø21.0	2.0		25.5	28.5	

DataSheet4U.com