

# MOTOROLA

## SEMICONDUCTOR

### TECHNICAL DATA

## Advance Information

# SMARTMOS™ H-Bridge

# Motor Control

The MPC1710A is a monolithic integrated circuit primarily intended for control of low voltage battery operated motors. The circuit contains logic control, predrivers, an oscillator, charge pump, and four MOSFETs in the output connected in an H-Bridge configuration. Features of this circuit include:

- High Output Current — 1 Ampere Continuous and 3 Amperes Peak
- Four Control Modes — Forward, Reverse, Stand-by and Brake
- Undervoltage Lockout
- Low On-Resistance to Minimize "On" Losses
- Small Space Saving 16 Pin Surface Mount Package
- Low Quiescent Current — 1 mA Maximum
- Available in Plastic Rails or Tape and Reel on 32 mm Tape

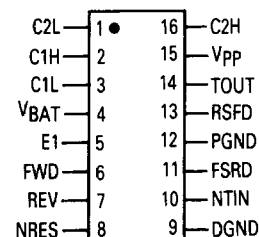
#### Ordering Information

- Plastic Rail — Order as MPC1710AM
- Tape and Reel — Order as MPC1710AML

# MPC1710A

**H-BRIDGE  
MOTOR DRIVE  
1 AMPERE  
8 VOLTS  
SILICON MONOLITHIC  
INTEGRATED CIRCUIT**

#### PINOUT



#### MAXIMUM RATINGS (T<sub>J</sub> = 25°C unless otherwise noted.)

Rating	Symbol	Value	Unit
Supply Voltage for Motor (Note 1)	VBAT	-0.3 to 8	Volts
Supply Voltage for Controller	E1	-0.3 to 7	Volts
Logic Input Voltage (Note 2)	V <sub>in</sub>	-0.3 to 7	Volts
Drain Current — Continuous (Note 3)	I <sub>D</sub>	1	Amps
— Peak (100 ms per 30 sec)		3	
— Peak (10 ms per 0.2 sec)		3	

#### THERMAL CHARACTERISTICS

Power Dissipation (T <sub>A</sub> = 25°C)	P <sub>D</sub>	650	mW
Thermal Resistance, Junction to Case	R <sub>θJC</sub>	33	°C/W
Thermal Resistance, Junction to Ambient (Note 4)	R <sub>θJA</sub>	150	°C/W
Operating Junction Temperature	T <sub>J</sub>	125	°C
Operating Ambient Temperature Range	T <sub>A</sub>	-30 to 60	°C
Storage Temperature Range	T <sub>stg</sub>	-55 to 125	°C
Maximum Lead Temperature for Soldering Purposes (Note 5)	T <sub>L</sub>	240	°C

#### Notes:

1. A 10 Volt zener diode is recommended at Pin 4 to protect against induced voltages caused by stray inductance.
2. For supply voltages between -0.3 to 7 Volts. This voltage is equal to the supply voltage.
3. With heat sink to maintain T<sub>J</sub> below 125°C.
4. Mounted on a printed circuit board.
5. At 30 second soldering time after a preheat temperature of 180°C for 30 seconds.

SMARTMOS is a trademark of Motorola Inc.

This document contains information on a new product. Specifications and information herein are subject to change without notice.



**OPERATING CONDITIONS**

Rating	Symbol	Value	Unit
Supply Voltage for Motor	V <sub>BAT</sub>	2 to 6	Volts
Supply Voltage for Controller	E1	4.8 to 6	Volts
Charge Pump Output Voltage	V <sub>PP</sub>	11 to 17	Volts
Operating Ambient Temperature	T <sub>A</sub>	-30 to 60	°C
Charge Pump Capacitors	C1, C2 & C3	10 to 100	nF

**ELECTRICAL CHARACTERISTICS** (At operating conditions unless otherwise noted.)

Characteristic	Symbol	Min	Typ	Max	Unit
Power Supply Current for Motor (Stand By)	I <sub>BAT</sub>	—	—	1	μA
Power Supply Current for Controller (Operation)	I <sub>E1</sub>	—	—	1	mA
Input Leakage Current for Pin 6 and Pin 7					μA
High Input (E1 = 6 V)	I <sub>IH</sub>	—	—	1	
(E1 = 6 V, T <sub>A</sub> = 60°C)		—	—	2	
Low Input (V <sub>IL</sub> = 0)	I <sub>IL</sub>	-1	—	—	
(V <sub>IL</sub> = 0, T <sub>A</sub> = 60°C)		-2	—	—	
Logic Input Voltage Levels					Volts
Input Voltage Low	V <sub>IL</sub>	—	—	0.8	
Input Voltage High	V <sub>IH</sub>	3	—	—	
Input Resistance for Pin 8 and Pin 10 (Note 6)	r <sub>i</sub>				kOhm
(E1 = 6 V, 2 ≤ V <sub>BAT</sub> ≤ 6 V)		35	—	65	
(E1 = 6 V, 2 ≤ V <sub>BAT</sub> ≤ 6 V, T <sub>A</sub> = 60°C)		25	—	75	
Resistance of Motor Driving Output (I <sub>L</sub> = 1 A) (Note 8)					Ohms
Source On-Resistance	r <sub>o(so)</sub>	—	—	0.41	
Sink On-Resistance	r <sub>o(si)</sub>	—	—	0.21	
Charge Pump Output Voltage (Pin 15)					Volts
Off Motor Driving Voltage	V <sub>PP(off)</sub>	—	—	17	
On Motor Drive Voltage (Note 7)	V <sub>PP(on)</sub>	11	—	—	
MOSFET Driving Output Voltage	V <sub>TOUT</sub>	11	—	17	Volts
Undervoltage Shutdown Threshold (V <sub>PP</sub> Active)	V <sub>E1S</sub>	2.5	—	4.2	Volts

**SWITCHING CHARACTERISTICS**

Charge Pump Rise Time	(See Figure 3)	t <sub>VPP</sub>	—	—	30	ms
Turn-On Time	(See Figure 4)	t <sub>on</sub>	—	—	3	μs
Turn-Off Time	(See Figure 4)	t <sub>off</sub>	—	—	2	μs
TOUT Rise Time (C = 500 pF)	(See Figure 5)	t <sub>TOUT</sub>	—	—	5	ms
Shut-down Time of V <sub>PP</sub>	(See Figure 6)	t <sub>VPPS</sub>	—	—	3	ms
Shoot-Through Current	(See Figure 4)	I <sub>STH</sub>	—	—	500	mA

## Notes:

6. E1 max V<sub>BAT</sub> min and max.
7. 1 ms drive/brake mode driving.
8. Typical limits are measured at T<sub>C</sub> = 25°C.

Table 1. MPC1710A Truth Table

NRES	NTIN	FWR	REV	RSFD	FSRD	TOUT
1	X	1	1	0	0	X
1	X	1	0	0	1	X
1	X	0	1	1	0	X
1	X	0	0	Z	Z	X
0	X	X	X	Z	Z	0
1	1	X	X	X	X	0
1	0	X	X	X	X	1

Z = High Impedance  
X = Not Critical

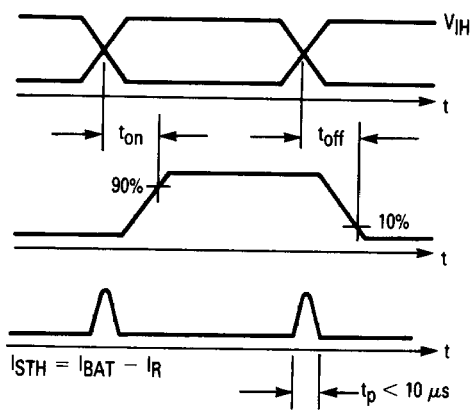
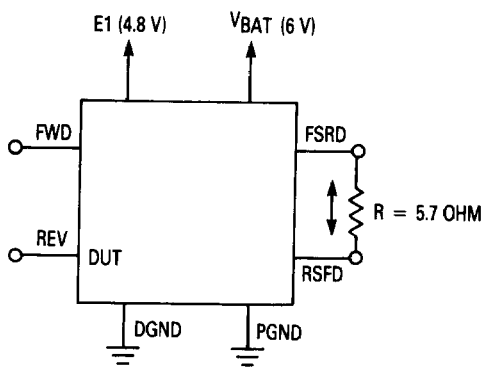


Figure 4.

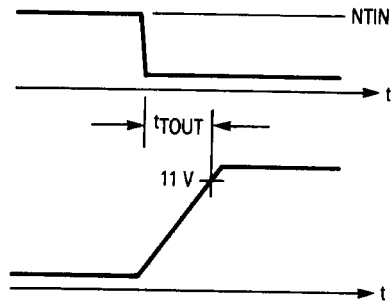
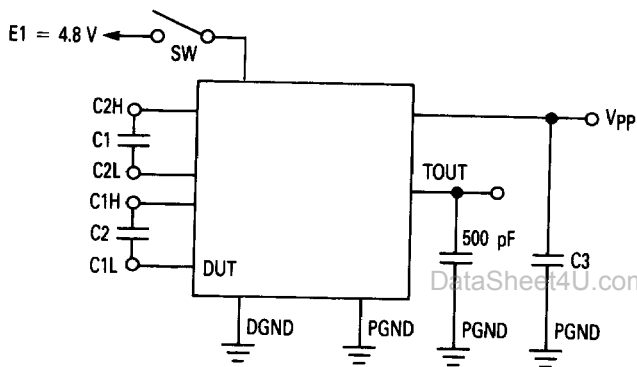


Figure 5.

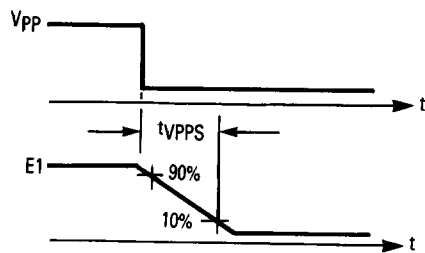
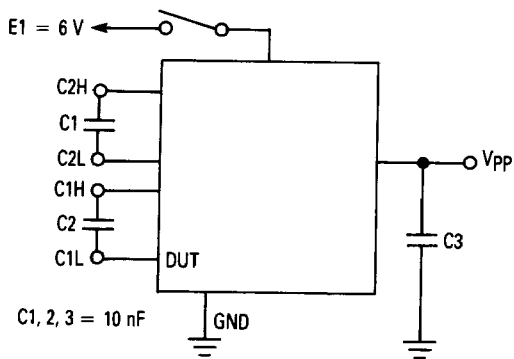
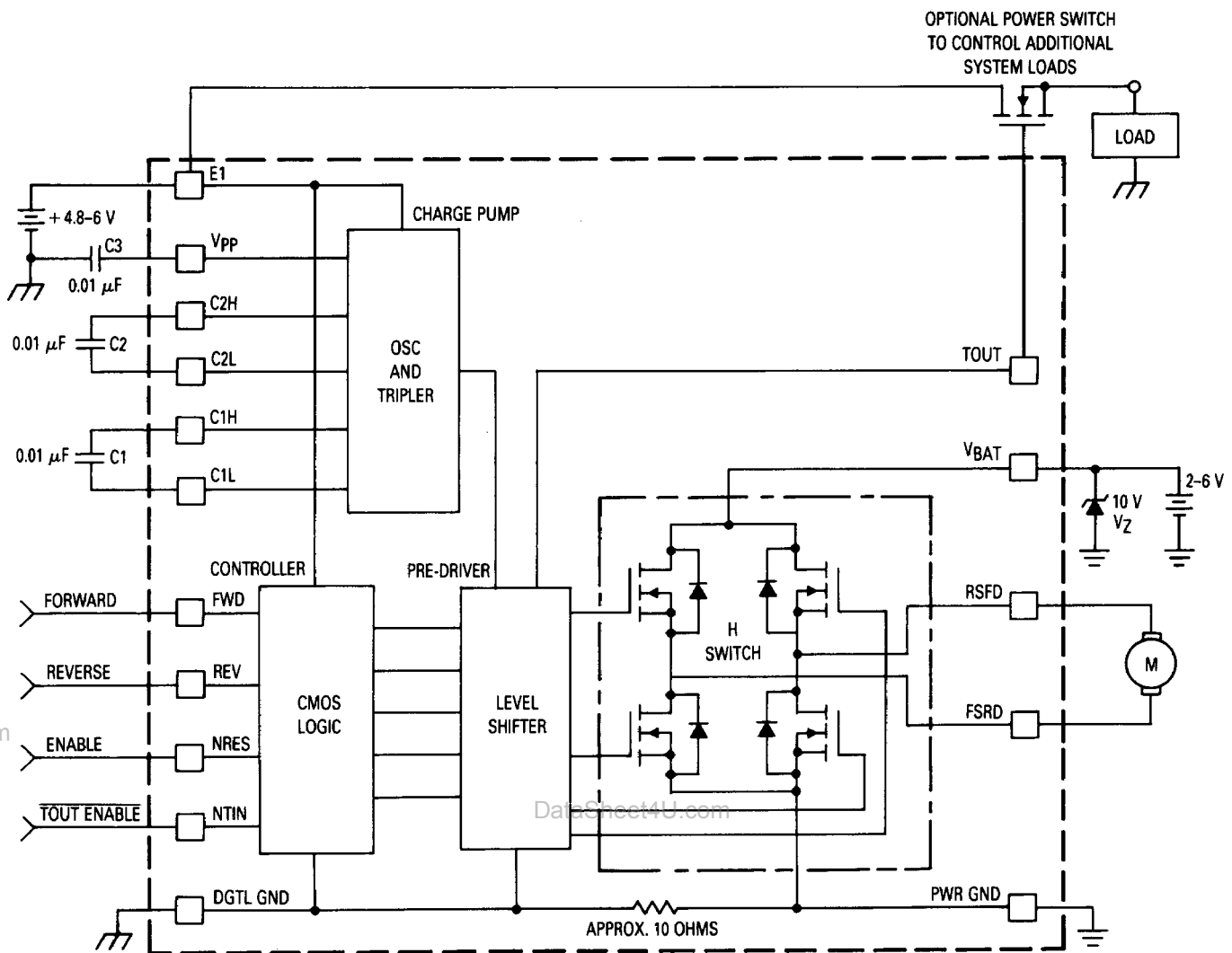


Figure 6.

## TYPICAL MPC1710A APPLICATION



## MPC1710A Pin Definition

Pin 1	C2L	Second stage charge pump capacitor (Low potential).
Pin 2	C1H	First stage charge pump capacitor (High potential).
Pin 3	C1L	First stage charge pump capacitor (Low potential).
Pin 4	VBAT	Motor (H-Bridge) voltage supply.
Pin 5	E1	Control logic voltage supply.
Pin 6, 7	FWD, REV	Logic inputs to control motor direction and braking.
Pin 8	NRES	Control circuit enable pin.
Pin 9	DGND	Control logic (Digital) ground.
Pin 10	NTIN	Enable control for TOUT. A logic "0" on this pin charge pump drives TOUT.
Pin 11, 13	FSRD, RSFD	H-Bridge outputs which control motor direction (See truth table).
Pin 12	PGND	H-Bridge power ground.
Pin 14	TOUT	Charge pumped output for driving an external MOSFET switch.
Pin 15	Vpp	Charge pump output.
Pin 16	C2H	Second stage charge pump capacitor (High potential).

Figure 7.

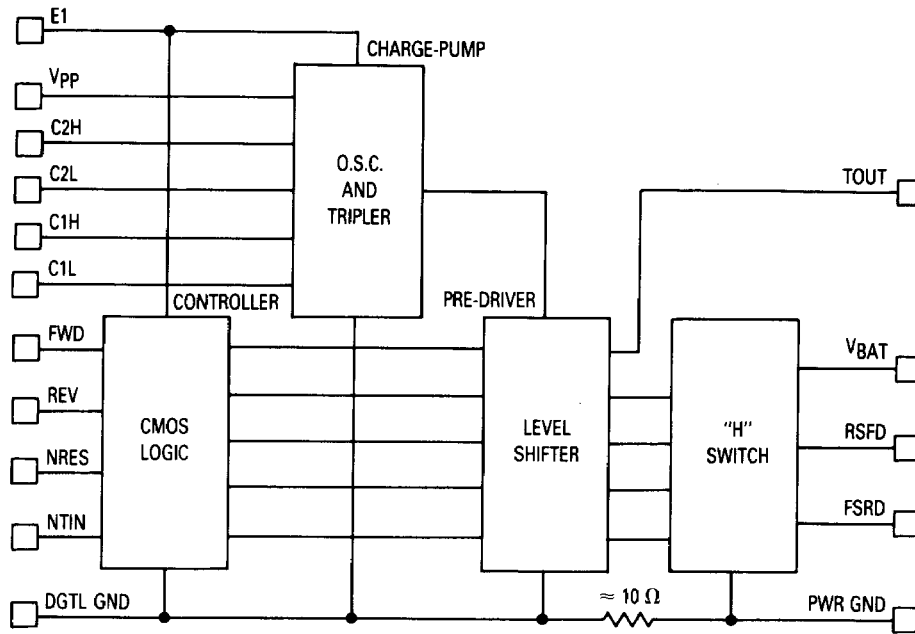


Figure 1. Block Diagram

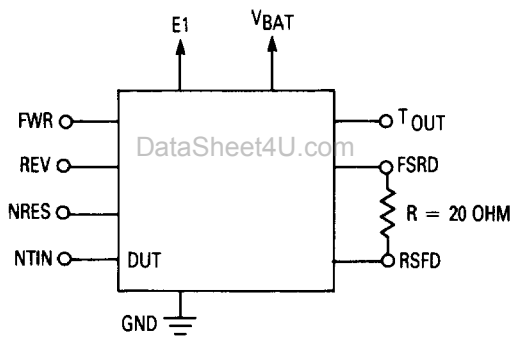


Figure 2.

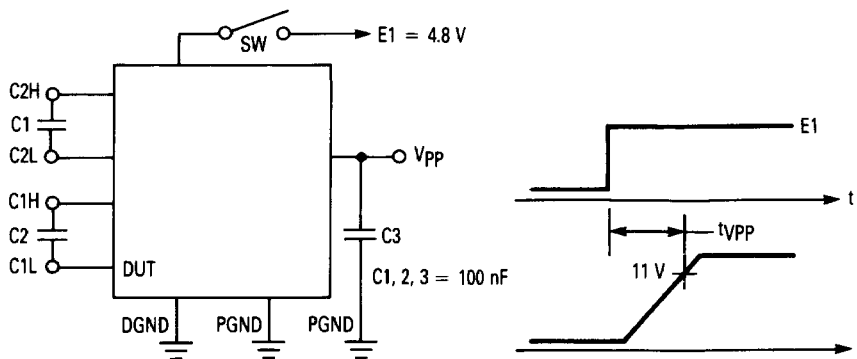
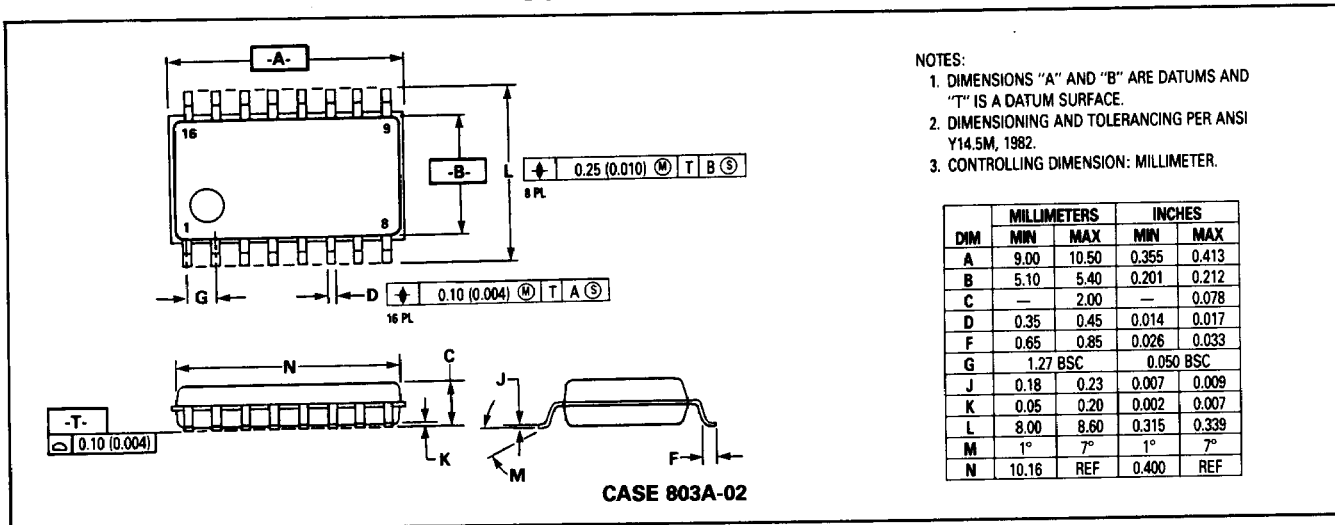


Figure 3.

### OUTLINE DIMENSIONS



- NOTES:
1. DIMENSIONS "A" AND "B" ARE DATUMS AND "T" IS A DATUM SURFACE.
  2. DIMENSIONING AND TOLERANCING PER ANSI Y14.5M, 1982.
  3. CONTROLLING DIMENSION: MILLIMETER.

DIM	MILLIMETERS		INCHES	
	MIN	MAX	MIN	MAX
A	9.00	10.50	0.355	0.413
B	5.10	5.40	0.201	0.212
C	—	2.00	—	0.078
D	0.35	0.45	0.014	0.017
F	0.65	0.85	0.026	0.033
G	1.27 BSC		0.050 BSC	
J	0.18	0.23	0.007	0.009
K	0.05	0.20	0.002	0.007
L	8.00	8.60	0.315	0.339
M	1°	7°	1°	7°
N	10.16	REF	0.400	REF

et4U.com

DataSheet4U.com

Motorola reserves the right to make changes without further notice to any products herein to improve reliability, function or design. Motorola does not assume any liability arising out of the application or use of any product or circuit described herein; neither does it convey any license under its patent rights nor the rights of others. Motorola and are registered trademarks of Motorola, Inc. Motorola, Inc. is an Equal Employment Opportunity/Affirmative Action Employer.

**Literature Distribution Centers:**  
 USA: Motorola Literature Distribution; P.O. Box 20912; Phoenix, Arizona 85036.  
 EUROPE: Motorola Ltd.; European Literature Center; 88 Tanners Drive, Blakelands Milton Keynes, MK145BP, England.  
 ASIA PACIFIC: Motorola Semiconductors H.K. Ltd.; P.O. Box 80300; Cheung Sha Wan Post Office; Kowloon Hong Kong.



**MOTOROLA**

008437

MPC1710A