

MPXA SERIES

For AC line, Stud Mounting, Cylindrical Type

◆FEATURES

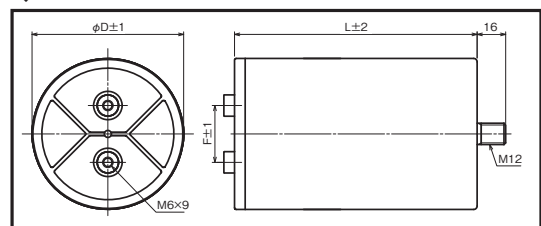
- Inverter smoothing capacitors for Industrial equipment.
- Reliability is excellent because these capacitors provide self-healing.
- High isolation and low loss of polypropylene film used.
- Mounting workability can be improved by stud fixing screw.
- RoHS compliance.



◆SPECIFICATIONS

Category Temperature Range	-20°C~+70°C
Rated Voltage Range(U _R)	220Vac~480Vac
Capacitance Range	15μF~200μF
Capacitance Tolerance	±10% (K)

◆OUTLINE



•Different capacitance and rated voltage item is available. For details, please consult our sales offices.