

MR4045

Automotive Transient Voltage Suppressor

34 V – 45 V

Designed for Automotive Applications (Alternator) requiring Reverse Avalanche Capability for use as Transient Voltage Suppressor. Developed to suppress transients in automotive systems, this device operates in the forward mode as Standard Rectifier or in Reverse as Transient Voltage Suppressor for Centralized Protection.

For further information referring to Mounting or Operating Conditions, contact your nearest ON Semiconductor Sales Representative.

Mechanical Characteristics

- Finish: 100% Tin Plated
All External Surfaces are Corrosion Resistant
- Weight: 2.6 Grams (Approximately)

Packaging/Labeling

- Two Sealed Bags into a Cardboard Box
- Device Number Labeled on the Bag

Marking

- The Devices are Laser Marked on the Epoxy Surface

MAXIMUM RATING

| Rating | Symbol | Value | Unit |
|---|------------------------|----------------|------------------|
| DC Blocking Voltage | V_R | 30 | Volts |
| Average Forward Current (Single Phase, Resistive Load, $T_C = 185^\circ\text{C}$) | I_O | 40 | Amps |
| Peak Repetitive Reverse Surge Current (Time Constant = 10 ms, $T_C = 25^\circ\text{C}$) (Time Constant = 80 ms, $T_C = 25^\circ\text{C}$) | I_{RSM} I_{RSM} | 55 25 | Amps |
| Non-Repetitive Peak Surge Current (Halfwave, Single Phase, 50 Hz) | I_{FSM} | 500 | Amps |
| Storage Temperature Range | T_{stg} | -40 to +200 | $^\circ\text{C}$ |
| Maximum Operating Junction Temperature | T_J | 200 | $^\circ\text{C}$ |



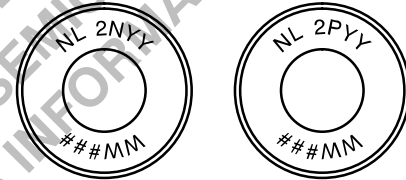
ON Semiconductor™

<http://onsemi.com>



N SUFFIX
(Anode to Cup)
P SUFFIX
(Cathode to Cup)
CASE 193A

MARKING DIAGRAM



NL = Location Code
2N or 2P = Device Code and Polarity
YY = Year
WW = Work Week
= Assembly Lot Number

ORDERING INFORMATION

| Device | Package | Shipping |
|---------|------------|----------------|
| MR4045N | Button Can | 5000 Units/Box |
| MR4045P | Button Can | 5000 Units/Box |

THERMAL CHARACTERISTICS

| Characteristic | Symbol | Value | Unit |
|-------------------------------------|-----------------|-------|---------------|
| Thermal Resistance Junction to Case | $R_{\theta JC}$ | 0.4 | $^{\circ}C/W$ |

ELECTRICAL CHARACTERISTICS

| Characteristic | Symbol | Min | Max | Unit |
|---|--------------|--------|----------|----------------|
| Instantaneous Forward Voltage (Note 1.) ($I_F = 100$ Amps, $T_C = 25^{\circ}C$) | V_F | - | 1.1 | Volts |
| Reverse Current (Note 1.) ($V_R = 28$ Vdc, $T_C = 25^{\circ}C$) | I_R | - | 1.0 | μA |
| Breakdown Voltage (Note 1.) ($I_R = 100$ mA, $T_C = 25^{\circ}C$) | $V_{(BR)}$ | 34 | 45 | Volts |
| Breakdown Voltage ($I_R = 80$ Amps, $T_C = 25^{\circ}C$, $PW = 80 \mu s$) ($I_R = 80$ Amps, $T_C = 85^{\circ}C$, $PW = 80 \mu s$) | $V_{(BR)}$ | - | 53 55 | Volts |
| Breakdown Voltage Temperature Coefficient | $V_{(BR)TC}$ | 0.095* | | $\%/^{\circ}C$ |
| Forward Voltage Temperature Coefficient ($I_F = 10$ mA) | V_{FTC} | -2* | | $mV/^{\circ}C$ |

1. Pulse Test: Pulse Width < 300 μs , Duty Cycle < 2%.

**Typical

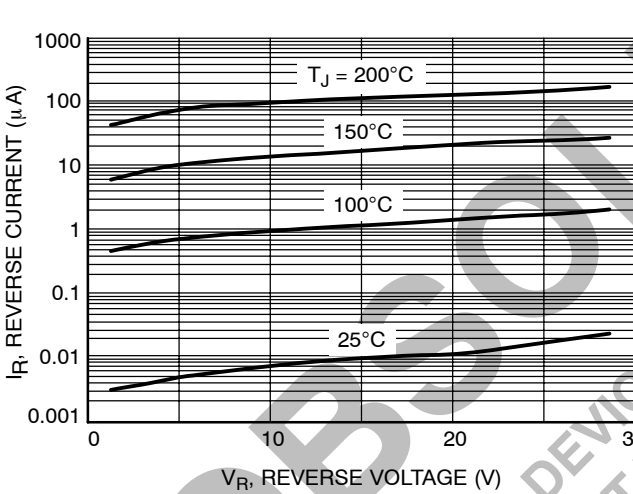


Figure 1. Typical Reverse Current

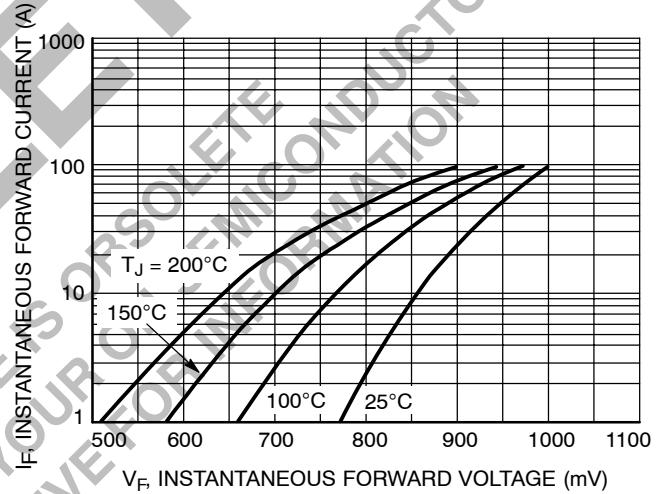


Figure 2. Typical Forward Voltage

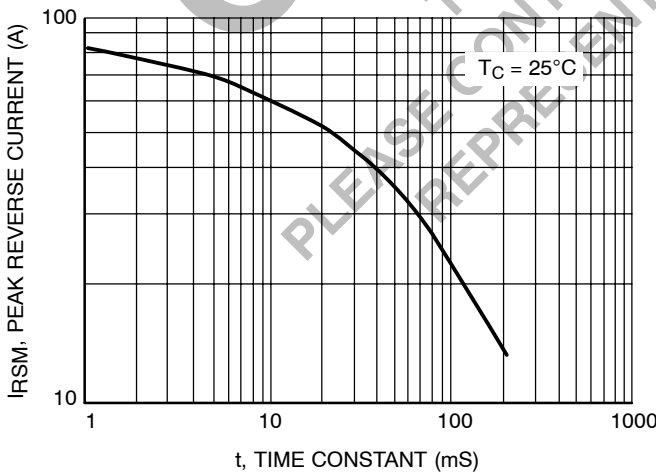


Figure 3. Maximum Peak Reverse Current

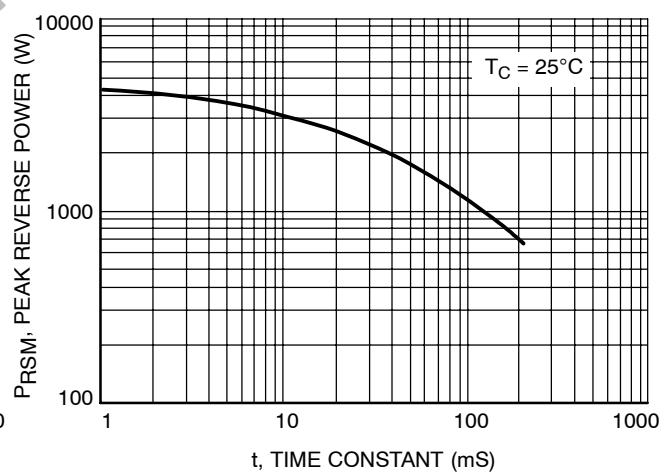


Figure 4. Maximum Peak Reverse Power

MR4045

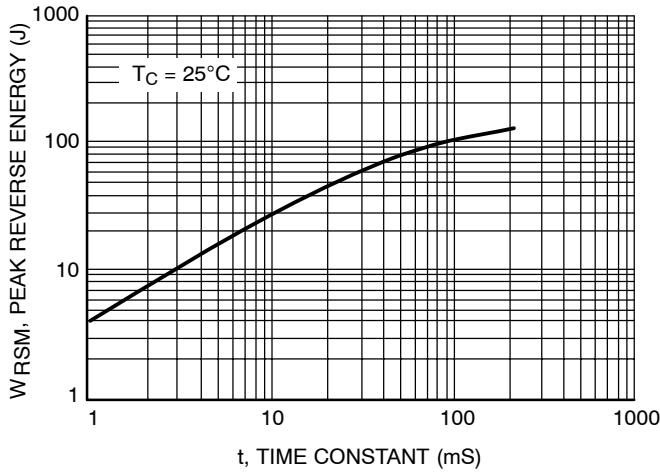


Figure 5. Maximum Reverse Energy

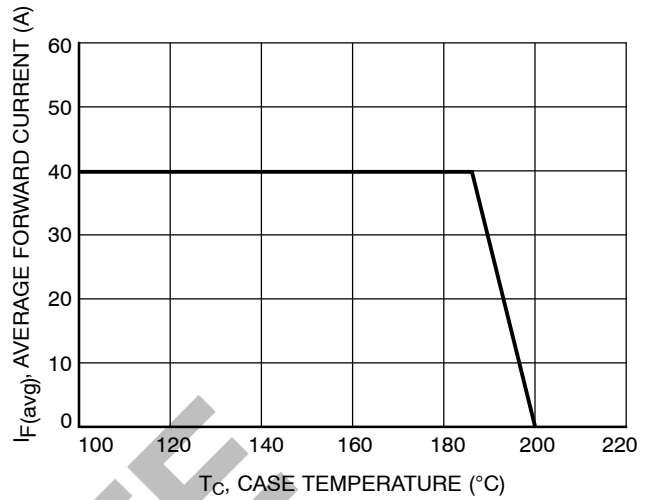


Figure 6. Maximum Current Rating

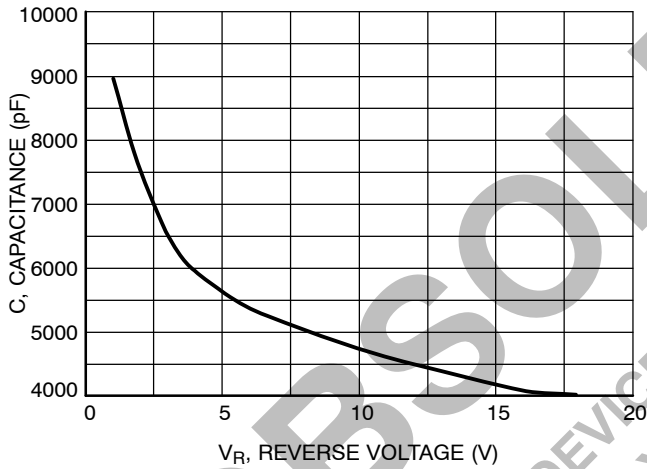


Figure 7. Typical Capacitance

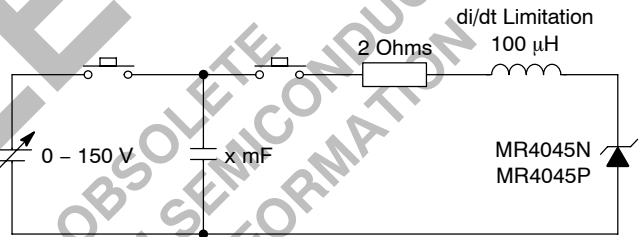


Figure 8. Load Dump Test Circuit

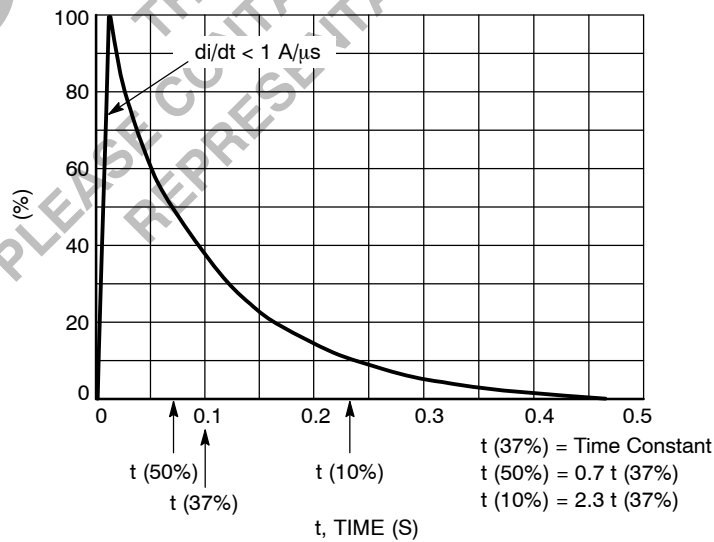
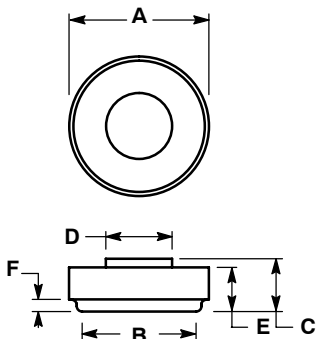


Figure 9. Load Dump Pulse Current

MR4045

PACKAGE DIMENSIONS


N SUFFIX
(Anode to Cup)
P SUFFIX
(Cathode to Cup)
CASE 193A-02
ISSUE A



- NOTES:
1. DIMENSIONING AND TOLERANCING PER ANSI Y14.5M, 1982.
 2. CONTROLLING DIMENSION: MILLIMETER.

| DIM | MILLIMETERS | | INCHES | |
|-----|-------------|------|--------|-------|
| | MIN | MAX | MIN | MAX |
| A | 11.4 | 11.6 | 0.449 | 0.457 |
| B | 9.3 | 9.7 | 0.366 | 0.382 |
| C | 4.3 | 4.9 | 0.169 | 0.193 |
| D | 5.4 | 5.6 | 0.213 | 0.220 |
| E | 3.6 | 4.2 | 0.142 | 0.165 |
| F | 1.0 | 2.0 | 0.039 | 0.079 |

OBSOLETE
THIS DEVICE IS OBSOLETE
PLEASE CONTACT YOUR ON SEMICONDUCTOR
REPRESENTATIVE FOR INFORMATION

ON Semiconductor and  are registered trademarks of Semiconductor Components Industries, LLC (SCILLC). SCILLC reserves the right to make changes without further notice to any products herein. SCILLC makes no warranty, representation or guarantee regarding the suitability of its products for any particular purpose, nor does SCILLC assume any liability arising out of the application or use of any product or circuit, and specifically disclaims any and all liability, including without limitation special, consequential or incidental damages. "Typical" parameters which may be provided in SCILLC data sheets and/or specifications can and do vary in different applications and actual performance may vary over time. All operating parameters, including "Typicals" must be validated for each customer application by customer's technical experts. SCILLC does not convey any license under its patent rights nor the rights of others. SCILLC products are not designed, intended, or authorized for use as components in systems intended for surgical implant into the body, or other applications intended to support or sustain life, or for any other application in which the failure of the SCILLC product could create a situation where personal injury or death may occur. Should Buyer purchase or use SCILLC products for any such unintended or unauthorized application, Buyer shall indemnify and hold SCILLC and its officers, employees, subsidiaries, affiliates, and distributors harmless against all claims, costs, damages, and expenses, and reasonable attorney fees arising out of, directly or indirectly, any claim of personal injury or death associated with such unintended or unauthorized use, even if such claim alleges that SCILLC was negligent regarding the design or manufacture of the part. SCILLC is an Equal Opportunity/Affirmative Action Employer. This literature is subject to all applicable copyright laws and is not for resale in any manner.

PUBLICATION ORDERING INFORMATION

LITERATURE FULFILLMENT:
Literature Distribution Center for ON Semiconductor
P.O. Box 5163, Denver, Colorado 80217 USA
Phone: 303-675-2175 or 800-344-3860 Toll Free USA/Canada
Fax: 303-675-2176 or 800-344-3867 Toll Free USA/Canada
Email: orderlit@onsemi.com

N. American Technical Support: 800-282-9855 Toll Free
USA/Canada
Europe, Middle East and Africa Technical Support:
Phone: 421 33 790 2910
Japan Customer Focus Center
Phone: 81-3-5773-3850

ON Semiconductor Website: www.onsemi.com
Order Literature: <http://www.onsemi.com/orderlit>

For additional information, please contact your local Sales Representative