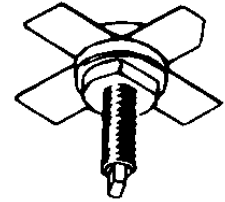


MS1252
**RF AND MICROWAVE TRANSISTORS
HF - VHF COMMUNICATION APPLICATIONS**
Features

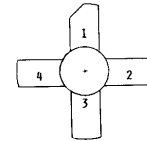
- **FREQUENCY 160MHz**
- **VOLTAGE 13.6V**
- **COMMON EMITTER**
- **POWER OUT 40W**
- **POWER GAIN 9dB**



.380 4LSTUD(M135)
epoxy sealed

DESCRIPTION:

The MS1252 is especially designed for VHF large signal amplifier applications in industrial and commercial FM equipment operating up to 175 MHz. Ideally suited for marine radio applications.

PIN CONNECTION


1 collector 3 base
2 emitter 4 emitter

ABSOLUTE MAXIMUM RATINGS (T_{case} = 25°C)

Symbol	Parameter	Value	Unit
V _{CBO}	Collector-Base Voltage	36	V
V _{CEO}	Collector-Emitter Voltage	18	V
V _{EBO}	Emitter-Base Voltage	4	V
I _C	Device Current	5	A
P _{DISS}	Power Dissipation	70	W
T _J	Junction Temperature	+ 200	°C
T _{STG}	Storage Temperature	- 65 to + 150	°C

THERMAL DATA

R _{TH(j-c)}	Junction-Case Thermal Resistance	2.5	°C/W
----------------------	----------------------------------	-----	------

ELECTRICAL SPECIFICATIONS (T_{case} = 25°C)

STATIC

Symbol	Test Conditions		Value			Units
			Min.	Typ.	Max.	
BV_{CBO}	I_C = 5 mA	I_E = 0 mA	36	---	---	V
BV_{CES}	I_C = 50 mA	V_{BE} = 0 V	36	---	---	V
BV_{CEO}	I_C = 50 mA	I_B = 0 mA	18	---	---	V
BV_{EBO}	I_E = 10 mA	I_C = 0 mA	4	---	---	V
I_{CBO}	V_{CB} = 15 V	I_E = 0 mA	---	---	5	mA
h_{FE}	V_{CE} = 5 V	I_C = 5 A	20	---	200	---

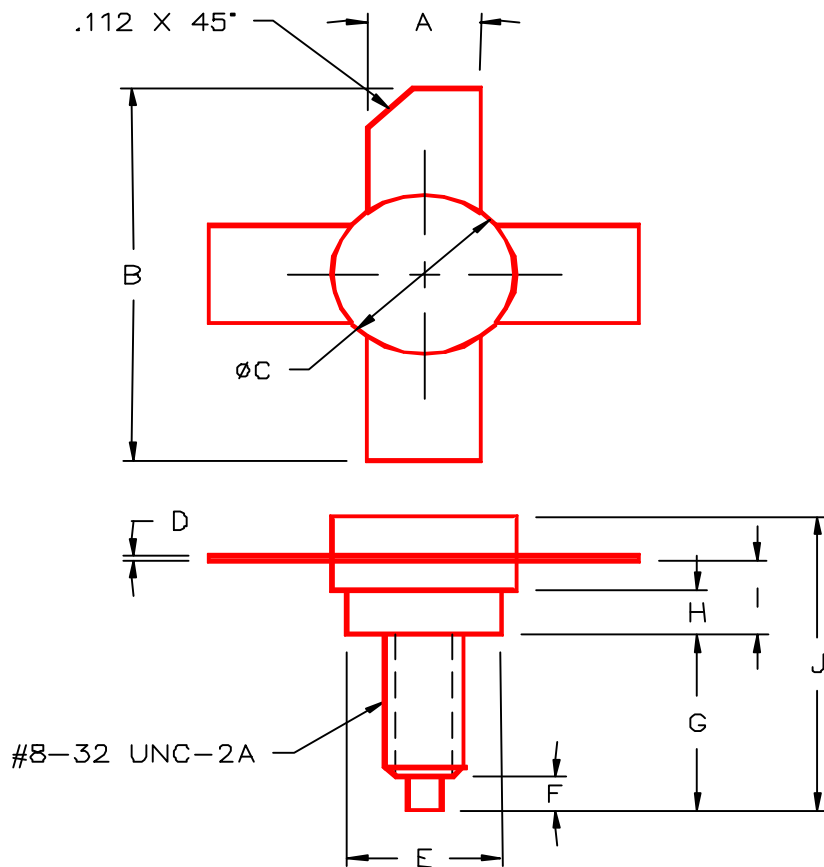
DYNAMIC

Symbol	Test Conditions			Value			Units
				Min.	Typ.	Max.	
P_{OUT}	f = 160 MHz	P_{IN} = 5 W	V_{CE} = 50 V	40			W
G_P*	f = 160 MHz	P_{IN} = 5 W	V_{CE} = 50 V	9			dB
ç_C*	f = 160 MHz	P_{IN} = 5 W	V_{CE} = 50 V	55			%
C_{OB}	f = 1 MHz		V_{CB} = 13.6 V			135	PF

MS1252

PACKAGE MECHANICAL DATA

PACKAGE STYLE M135



	MINIMUM INCHES/MM	MAXIMUM INCHES/MM		MINIMUM INCHES/MM	MAXIMUM INCHES/MM
A	.220/5,59	.230/5,84	I	.155/3,94	.175/4,45
B	.980/24,89		J		.750/19,05
C	.370/9,40	.385/9,78			
D	.004/0,10	.007/0,18			
E	.320/8,13	.330/8,38			
F	.100/2,54	.130/3,30			
G	.450/11,43	.490/12,45			
H	.090/2,29	.100/2,54			