

MS1404

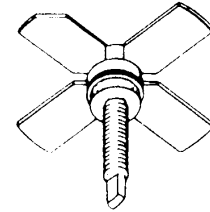
RF & MICROWAVE TRANSISTORS UHF MOBILE APPLICATIONS

Features

- 470 MHz
- 12.5 VOLTS
- $P_{OUT} = 5.0$ WATT
- $G_P = 8.5$ dB MINIMUM
- COMMON EMITTER CONFIGURATION

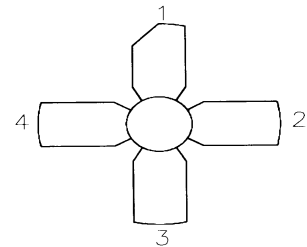
DESCRIPTION:

The MS1404 is a 12.5V Class C epitaxial silicon NPN planar transistor designed primarily for UHF communications. This device utilizes improved metallization to achieve infinite VSWR at rated operating conditions.



.280 4L STUD (M122)
epoxy sealed

PIN CONNECTION



1. Collector 3. Base
2. Emitter 4. Emitter

ABSOLUTE MAXIMUM RATINGS (T_{case} = 25°C)

Symbol	Parameter	Value	Unit
V _{CBO}	Collector - Base Voltage	36	V
V _{CER}	Collector - Emitter Voltage	18	V
V _{CES}	Collector - Emitter Voltage	36	V
V _{EBO}	Emitter- Base Voltage	4.0	V
P _{DISS}	Power Dissipation	37	W
I _C	Device Current*	2.0	A
T _J	Junction Temperature	+200	°C
T _{STG}	Storage Temperature	-65 to +150	°C

Thermal Data

R _{TH(J-C)}	Thermal Resistance Junction-case	11.6	°C/W
----------------------	----------------------------------	------	------

MS1404

ELECTRICAL SPECIFICATIONS (T_{case} = 25°C)

STATIC

Symbol	Test Conditions		Value			Unit
			Min.	Typ.	Max.	
BV_{CES}	I_C = 10 mA	V_{BE} = 0 mA	36	---	---	V
BV_{CEO}	I_C = 50 mA	I_B = 0 mA	16	---	---	V
BV_{EBO}	I_E = 2 mA	I_C = 0 mA	4.0	---	---	V
I_{CBO}	V_{CB} = 15 V	I_E = 0 mA	---	---	1	mA
HFE	V_{CE} = 5 V	I_C = 200 mA	20	---	---	---

DYNAMIC

Symbol	Test Conditions			Value			Unit
				Min.	Typ.	Max.	
P_{OUT}	f = 470 MHz	P_{IN} = 0.70 W	V_{CC} = 12.5V	5.0	---	---	W
G_p	f = 470 MHz	P_{IN} = 0.70 W	V_{CC} = 12.5V	8.5	---	---	dB
C_{OR}	f = 1 MHz	V_{CB} = 12 V		---	19	---	pF

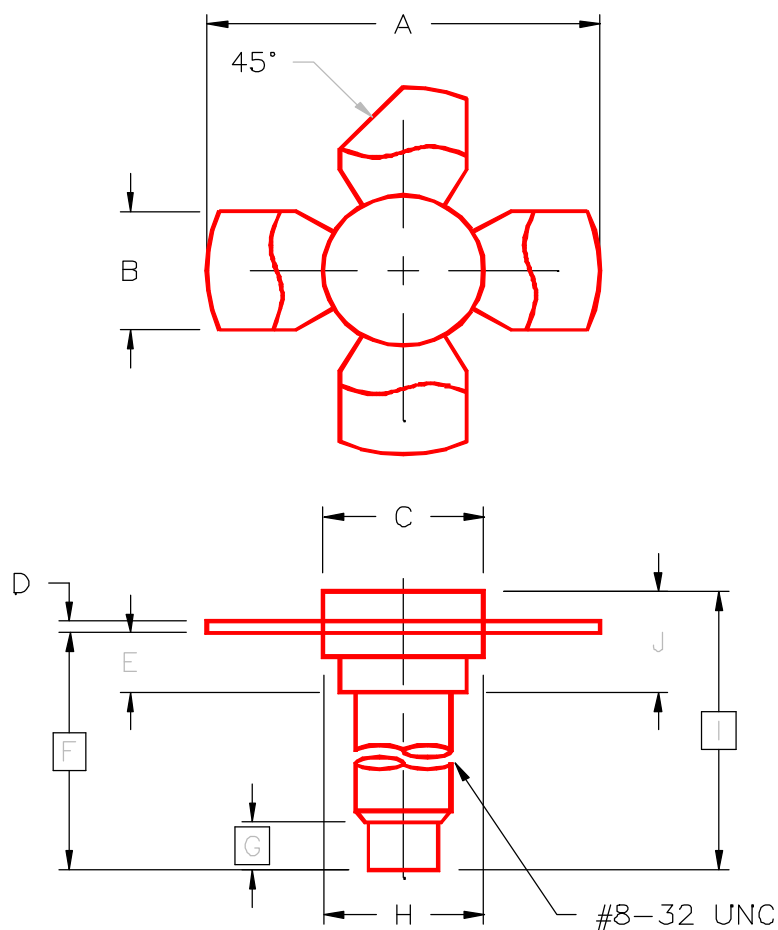
IMPEDANCE DATA:

FREQUENCY	Z _{in} (Ω)	Z _{cl} (Ω)
450 MHz	1.4 + j 2.0	10.4 - j 6.9
470 MHz	1.4 + j 2.9	11.4 + j 5.8
512 MHz	1.5 + j 3.4	11.9 + j 3.2

MS1404

PACKAGE MECHANICAL DATA

PACKAGE STYLE M122



	MINIMUM INCHES/MM	MAXIMUM INCHES/MM		MINIMUM INCHES/MM	MAXIMUM INCHES/MM
A	1.010/25,65	1.055/26,80	I	.640/16,26	
B	.220/5,59	.230/5,84	J	.175/4,45	.217/5,51
C	.270/6,86	.285/7,24			
D	.003/0,08	.007/0,18			
E	.117/2,97	.137/3,48			
F	.572/14,53				
G	.130/3,30				
H	.275/6,99	.285/7,24			