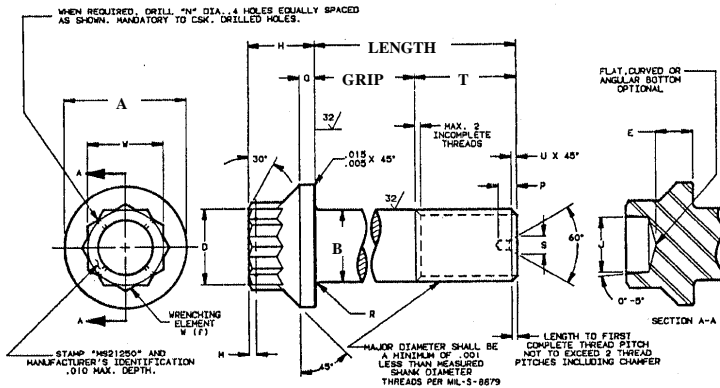


AVIAQUIP

MS21250 SUPERSEDES NAS624 THRU NAS 644

BOLT, STEEL, TENSION, 180 KSI FTU 450°F, 12 POINT EXTERNAL WRENCHED



NOTES:

1. Material - steel alloy MIL-S-5626
2. CAD plate TYPE 11, Class 2.
3. Dimensions are in INCHES unless otherwise noted.
4. Tolerances decimals $\pm .010$.
5. Dimensions to be met after plating.
6. Add letter "H" before Dash No. to designate drilled head.
7. First two Dash No's designate dia. in sixteenths. Last three Dash No's designate grip length in sixteenths.

USE TABLES FOR GRIP LENGTHS & DIAMETERS WHEN ORDERING

DIA DASH NO.	THREAD MIL-S-8879	"A" DIA.		"B" DIA.		"D" DIA.		"M"	"T" MIN REF	DOUBLE SHEAR LBS. MIN	ULTIMATE TENSILE LBS. MIN
		MA	MIN	MAX	MIN	MAX	MIN				
02	.1640-32	.300	.290	.1635	.1625	.219	.204	.062	.385	4,600	2,950
03	.1900-32	.350	.340	.1895	.1885	.250	.235	.062	.420	6,100	3,900
04	.2500-28	.438	.428	.2495	.2485	.312	.297	.062	.492	10,600	6,980
05	.3125-24	.531	.521	.3120	.3110	.375	.360	.062	.579	16,600	11,100
06	.3750-24	.649	.639	.3745	.3735	.437	.422	.070	.625	23,900	17,100
07	.4375-20	.750	.740	.4370	.4360	.500	.485	.070	.721	32,500	23,200
08	.5000-20	.828	.818	.4995	.4985	.562	.547	.070	.768	42,400	30,900
09	.5625-18	.938	.928	.5615	.5605	.625	.610	.094	.852	53,700	39,200
10	.6250-18	1.050	1.040	.6240	.6230	.687	.672	.094	.899	66,300	49,000
12	.7500-16	1.230	1.220	.7490	.7480	.812	.797	.094	1.036	95,400	71,100
14	.8750-14	1.438	1.428	.8740	.8730	.937	.922	.125	1.244	129,900	97,100
16	1.0000-12	1.625	1.615	.9990	.9980	1.062	1.047	.125	1.479	169,600	126,000
18	1.1250-12	1.875	1.865	1.240	1.225	1.250	1.235	.125	1.650	214,700	162,000
20	1.2500-12	2.125	2.115	1.2490	1.2475	1.312	1.297	.125	1.760	265,100	262,000
22	1.3750-12	2.313	2.303	1.3740	1.3725	1.437	1.422	.188	1.885	320,700	247,000
24	1.5000-12	2.500	2.490	1.4990	1.4975	1.625	1.610	.188	2.010	381,700	296,000

GRIP DASH NO.	GRIP $\pm .010$	DIAMETER DASH NUMBERS															
		02	03	04	05	06	07	08	09	10	12	14	16	18	20	22	24
		LENGTH															
004	.250	.655	.690	.762	.849	.895	.991	1.038									
006	.375	.780	.815	.887	.974	1.020	1.116	1.163	1.247	1.294	1.431						
008	.500	.905	.940	1.012	1.099	1.145	1.241	1.288	1.372	1.419	1.556	1.744	1.999	2.170			
010	.625	1.030	1.065	1.137	1.224	1.270	1.166	1.413	1.497	1.544	1.681	1.889	2.124	2.295	2.405	2.530	2.655
012	.750	1.155	1.190	1.262	1.349	1.395	1.491	1.538	1.622	1.669	1.806	2.014	2.249	1.420	2.530	2.655	2.780
014	.875	1.280	1.315	1.387	1.474	1.520	1.616	1.665	1.747	1.794	1.931	2.139	2.374	2.545	2.655	2.780	2.905
016	1.000	1.405	1.440	1.512	1.599	1.645	1.741	1.788	1.872	1.919	2.056	2.264	2.499	2.670	2.780	2.905	3.030
018	1.125	1.530	1.565	1.637	1.724	1.770	1.866	1.913	1.997	2.044	2.181	2.389	2.624	2.795	2.905	3.030	3.155
020	1.230	1.655	1.690	1.762	1.849	1.895	1.991	2.038	2.122	2.169	2.306	2.514	2.749	2.920	3.030	3.155	3.280
022	1.375	1.780	1.815	1.887	1.974	2.020	2.116	2.163	2.247	2.294	2.431	2.639	2.874	3.045	3.155	3.280	3.405
024	1.500	1.905	1.940	2.012	2.099	2.145	2.241	2.288	2.372	2.419	2.556	2.764	2.999	3.170	3.280	3.405	3.530
026	1.625	2.030	2.065	2.137	2.224	2.270	2.366	2.413	2.497	2.544	2.681	2.889	3.124	3.295	3.405	3.530	3.655
028	1.750	2.155	2.190	2.262	2.349	2.395	2.491	2.538	2.622	2.669	3.006	3.014	3.249	3.420	3.530	3.655	3.780
030	1.875	2.280	2.315	2.387	2.474	2.520	2.616	2.663	2.747	2.794	2.931	3.139	3.374	3.545	3.655	3.780	3.905
032	2.000	2.405	2.440	2.512	2.599	2.645	2.741	2.788	2.872	2.919	3.056	3.264	3.499	3.670	3.780	3.905	4.030
034	2.125	2.530	2.565	2.637	2.724	2.770	2.866	2.913	2.997	3.044	3.181	3.389	3.624	3.795	3.905	4.030	4.155
056	2.250	2.655	2.690	2.762	2.849	2.895	2.991	3.038	3.122	3.169	3.306	3.514	3.749	3.920	4.030	4.155	4.280
038	2.375	2.780	2.815	2.887	2.974	3.020	3.116	3.163	3.247	3.294	3.431	3.639	3.874	4.045	4.155	4.280	4.405
040	2.500	2.905	2.940	3.012	3.099	3.145	3.241	3.288	3.372	3.419	3.556	3.764	3.999	4.170	4.280	4.405	4.530
042	2.625	3.030	3.065	3.137	3.224	3.270	3.366	3.413	3.497	3.544	3.681	3.889	4.124	4.295	4.405	4.530	4.655
044	2.750	3.155	3.190	3.262	3.349	3.395	3.491	3.538	3.622	3.669	3.806	4.014	4.249	4.420	4.530	4.655	4.780
046	2.875	3.280	3.315	3.387	3.474	3.520	3.616	3.663	3.747	3.794	3.931	4.139	4.374	4.545	4.655	4.780	4.905
048	3.000	3.405	3.440	3.512	3.599	3.645	3.741	3.788	3.872	3.919	4.056	4.264	4.499	4.670	4.780	4.905	5.030
050	3.125	3.530	3.565	3.637	3.724	3.770	3.866	3.913	3.997	4.044	4.181	4.389	4.624	4.795	4.905	5.030	5.155

Product information and part numbers shown on these pages are not guaranteed correct by AVIAQUIP PTY. LTD and are subject to change without notice.