

MSF10065V1 650V Silicon Carbide Diode

Features

- 650-Volt Schottky Rectifier
- Shorter recovery time
- High-speed switching possible
- High-Frequency Operation
- Temperature-Independent Switching Behavior
- Extremely Fast Switching
- Positive Temperature Coefficient on VF

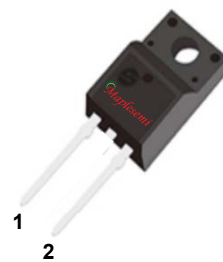
Benefits

- Higher safety margin against overvoltage
- Improved efficiency all load conditions
- Increased efficiency compared to Silicon Diode alternatives
- Reduction of Heat Sink Requirements
- Parallel Devices Without Thermal Runaway
- Essentially No Switching Losses

Applications

- Switch Mode Power Supplies
- Power Factor Correction
- Motor Drives
- HID Lighting

Package



Type : TO-220F -2lead

1、Cathode 2、Anode



Absolute Maximum Ratings T_c = 25°C unless otherwise noted

Symbol	Parameter	MSF10065V1	Units
VRRM	Repetitive Peak Reverse Voltage	650	V
VRSM	Surge Peak Reverse Voltage	650	V
VDC	DC Blocking Voltage	650	V
IF	Continuous Forward Current @T _c =25°C @T _c =135°C @T _c =150°C	30 14 10	A
IFRM	Repetitive Peak Forward Surge Current tp = 10 ms, Half Sine Wave @TC=25°C	55	A
IFSM	Non-Repetitive Peak Forward Surge Current tp= 10 ms, Half Sine Wave @TC=25°C	80	A
IFSM	Non-Repetitive Peak Forward Surge Current @TC=25°C, tp= 10 us, pulse	300	A
Ptot	Power Dissipation @T _c =25°C @T _c =110°C	55.6 24.1	W
TJ , Tstg	Operating Junction and Storage Temperature	-55 to +175	°C

Electrical Characteristics $T_C = 25^\circ \text{C}$ unless otherwise noted

Symbol	Test Conditions	Test Conditions	Min	Typ	Max	Unit
VF	Forward Voltage	IF=10A, TC=25° C IF=10A, TC=175° C	-	1.5 1.85	1.8 2.4	V
IR	Reverse Current	VR=650V, TC=25° C VR=650V, TC=175° C	-	1 10	5 30	μA
QC	Total Capacitive Charge	VR =400V, IF =10A TJ = 25° C $Qc = \int_0^{Vr} C (V) dv$	-	33	-	nC
C	Total Capacitance	VR =0V, TJ = 25° C, f=1MHz VR =200V, TJ = 25° C, f=1MHz VR =400V, TJ = 25° C, f=1MHz	-	514 54 45	-	pF
EC	Capacitance Stored Energy	VR=400V	-	6.5	-	μJ

Thermal Characteristics

Symbol	Parameter	Typ	Unit
RθJC	Thermal Resistance from Junction to Case	2.7	°C/W

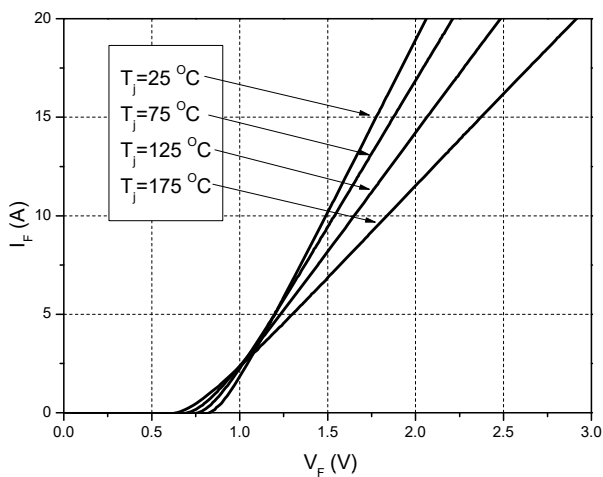
Typical Characteristics

Figure 1. Forward Characteristics

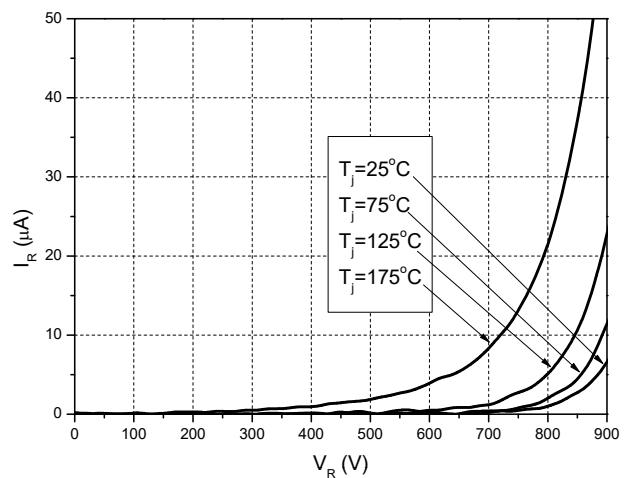


Figure 2. Reverse Characteristics

Typical Characteristics

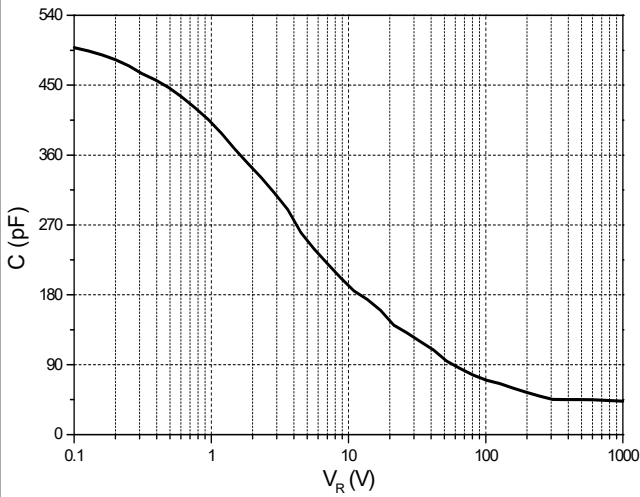


Figure 3. Capacitance vs. Reverse Voltage

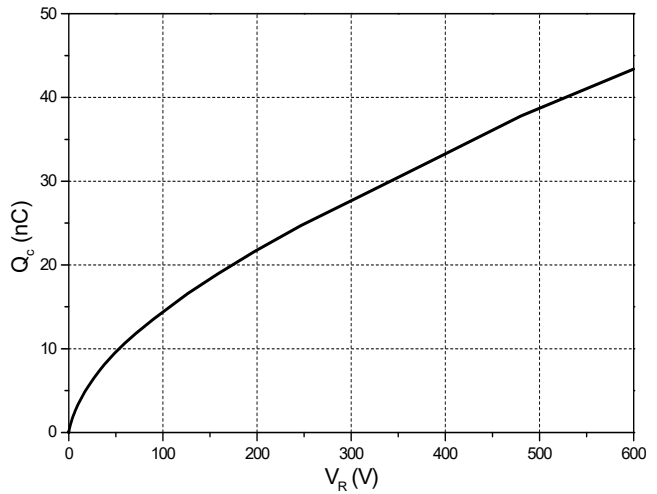


Figure 4. Total Capacitance Charge vs. Reverse Voltage

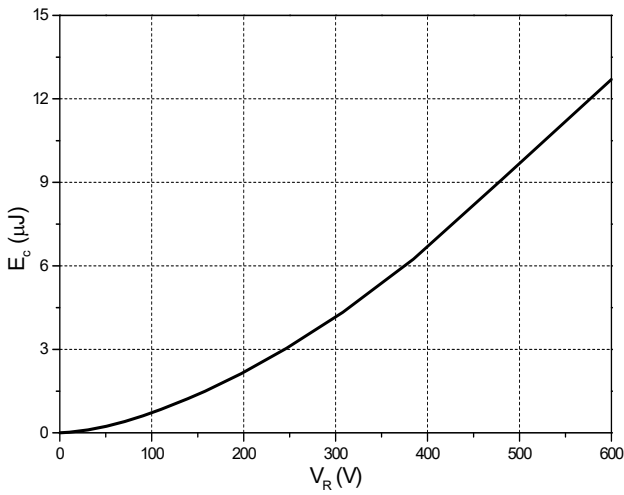


Figure 5. Capacitance Stored Energy

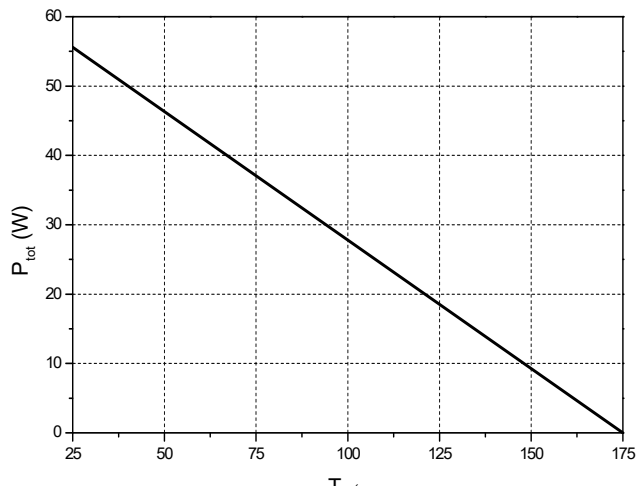


Figure 6. Power Derating

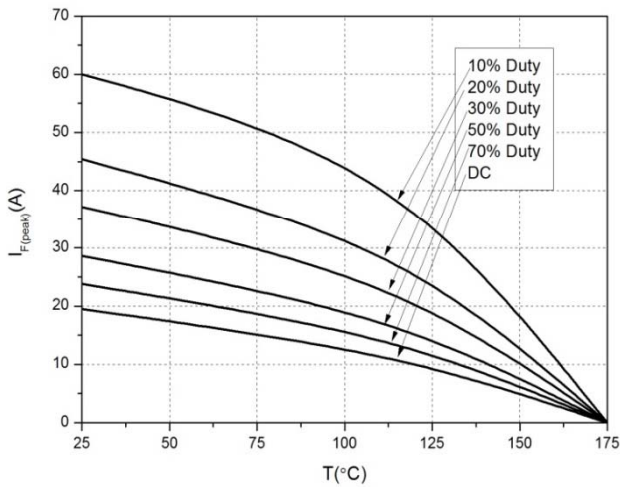


Figure 7. Current Derating

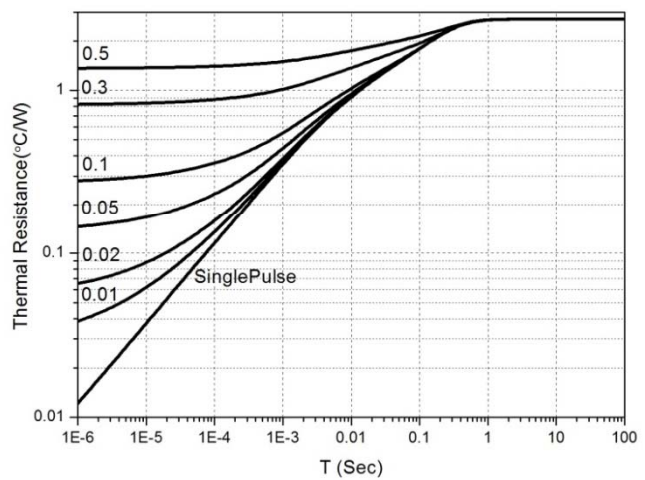
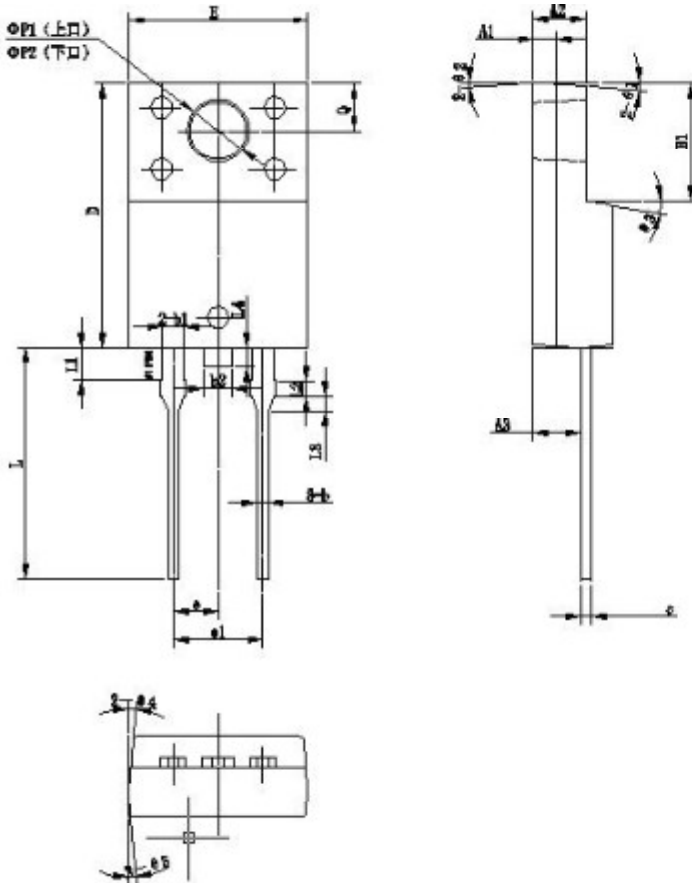


Figure 8. Transient Thermal Impedance

Package Dimensions TO-220F-2Lead



符号	机械尺寸/mm		
	最小值	典型值	最大值
A	4.50	4.60	4.70
A1		1.30	
A2	2.80	3.00	3.20
A3	2.50	2.70	2.90
b	0.5	0.60	0.75
b1		1.20	
b2		1.60	
c	0.85	0.90	0.75
D	14.80	15.00	15.20
E	9.95	10.15	10.35
e		2.65	
e1		5.10	
H1	6.50	6.70	6.90
L	12.70	13.20	13.70
L1		1.80	
L2		1.00	
L3		0.80	
L4		1.10	1.50
♠P1 (上口)	3.30	3.60	3.70
♠P2 (下口)	2.90	3.10	3.30
Q	2.60	2.70	2.80
φ 1		5°	
φ 2		4°	
φ 3		10°	
φ 4		5°	
φ 5		5°	

Marking Layout

MSF10065V1



AY5X6

MSF10065V1

1ST Line : Company logo

2nd Line : Date code

3rd Line : Device name