

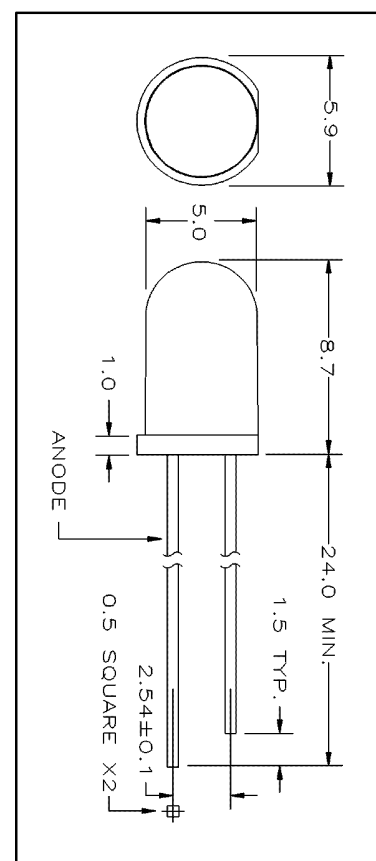
MT1318A-UR

Features

Low Current Requirements
IC Compatible
High Light Output
Reliable and Rugged

Maximum Ratings (Ta=25°C)

Characteristic	Symbol	Max.	Test Condition	Unit
Forward Current	I _F	30	-	mA
Pulsed Forward Current	I _{FP}	.10	DC=0.1, PW=0.1ms	A
Reverse Voltage	V _R	4.00	-	V
Power Dissipation	P _D	72.00	-	mW
Operating Temperature	T _{opr}	-25 ~ +85	-	°C
Storage Temperature	T _{stg}	-25 ~ +100	-	°C
Junction Temperature	T _j	-	-	°C
Soldering Temperature	T _{sol}	260	for 5 sec. max	°C



Opto-Electrical Characteristics (Ta=25°C)

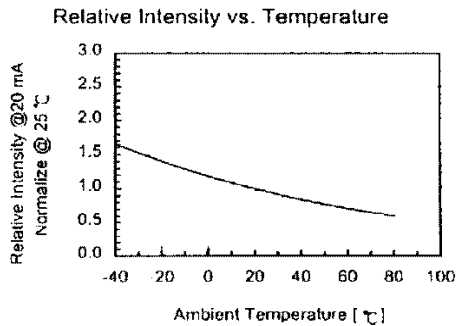
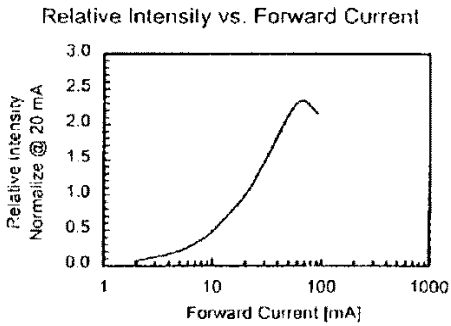
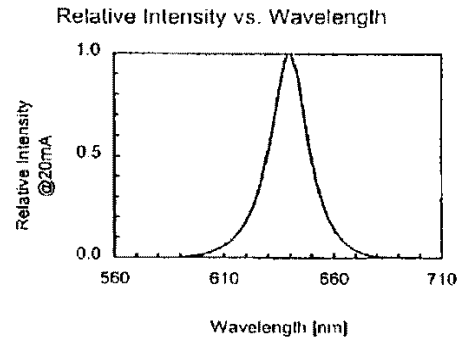
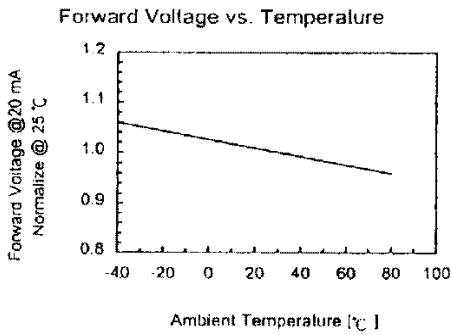
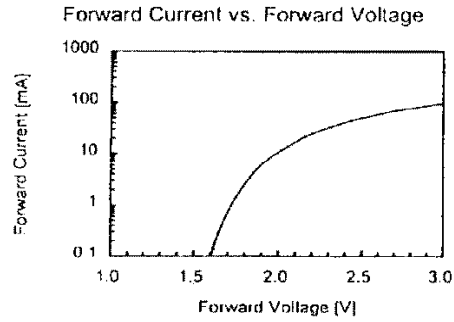
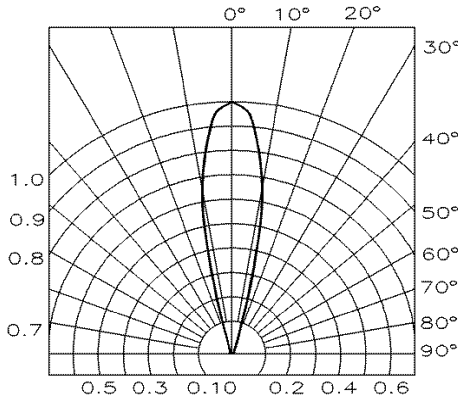
Characteristic	Symbol	Test Condition	Min	Typ	Max	Unit
Forward Voltage	V _F	I _F =20mA	-	1.90	2.40	V
Reverse Current	I _R	V _R =4V	-	-	100	μA
Power Output	P _O	I _F =20mA	-	6.50	-	mW
Luminous Intensity	I _v	I _F =20mA	1200.00	2200.00	-	mcd
Half Intensity Beam Angle	θ	-	-	± 24°	-	deg.
Peak Wavelength	λ _p	I _F =20mA	-	644	-	nm
Dominant Wavelength	λ _d	I _F =20mA	-	630	-	nm
Spectral Line Half Width	Δλ	I _F =20mA	-	18	-	nm

Company Headquarters
3 Northway Lane North
Latham, New York 12110
Toll Free: 800.984.5337
Fax: 518.785.4725



5mm Red Ultra Bright Emitter

MT1318A-UR Graphs



Company Headquarters
 3 Northway Lane North
 Latham, New York 12110
 Toll Free: 800.984.5337
 Fax: 518.785.4725



Web: www.marktechopto.com | Email: info@marktechopto.com

West Coast Sales Office
 950 South Coast Drive, Suite 265
 Costa Mesa, California 92626
 Toll Free: 800.984.5337
 Fax: 714.850.9314