



Issue Date: Apr. 30 2010
Model No.:MT190AW02 V.4

CHIMEI-INNOLUX copyright
All rights reserved,
Copying forbidden.

Record of Revision

Version	Revise Date	Page	Content
1.0	2010/4/29	All	First edition to all spec.



Contents:	
A. General Specification	5
B. Electrical Specifications	6
1. Pin assignment	6
2. Absolute maximum ratings	9
3. Electrical characteristics	10
a. Typical operating conditions	10
b. Display color vs. input data signals	13
c. Input signal timing	14
d. Display position	16
e. Backlight Unit	16
C. Optical specifications	17
D. Reliability test items	20
E. Safety	21
F. Display quality	21
G. Handling precaution	21
H. Label	22
I. Mechanical drawings	23
Appendix	

A. General specification

NO.	Item	Specification	Remark
1	Display resolution (pixel)	1440(H) X 900(V), WXGA+ resolution	
2	Active area (mm)	408.24(H) X 255.15(V)	
3	Screen size (inch)	19 inches diagonal	
4	Pixel pitch (mm)	0.2835(H) X 0.2835 (V)	
5	Color configuration	R, G, B vertical stripe	
6	Overall dimension (mm)	428 (W) X 278 (H) X10.5(D) (Typ.)	
7	Weight (g)	1800	(Max)
8	Surface treatment	Anti-Glare, Haze=25%, Hard coating (3H)	Note 1
9	Input color signal	8 bit LVDS	
10	Display colors	16.7M (6 bit with Hi-FRC)	
11	Color saturation	72% NTSC	
12	Optimum viewing direction	6 o'clock	
13	Backlight	Side-light bar (White LED)	
14	Power Consumption	10.5 (Watt)	(Typ.)
15	RoHS&HF	RoHS & HF compliance	
16	TCO 5.0	TCO 5.0 compliance	

Note 1: Glare Option available

B. Electrical specifications

1. Pin assignment

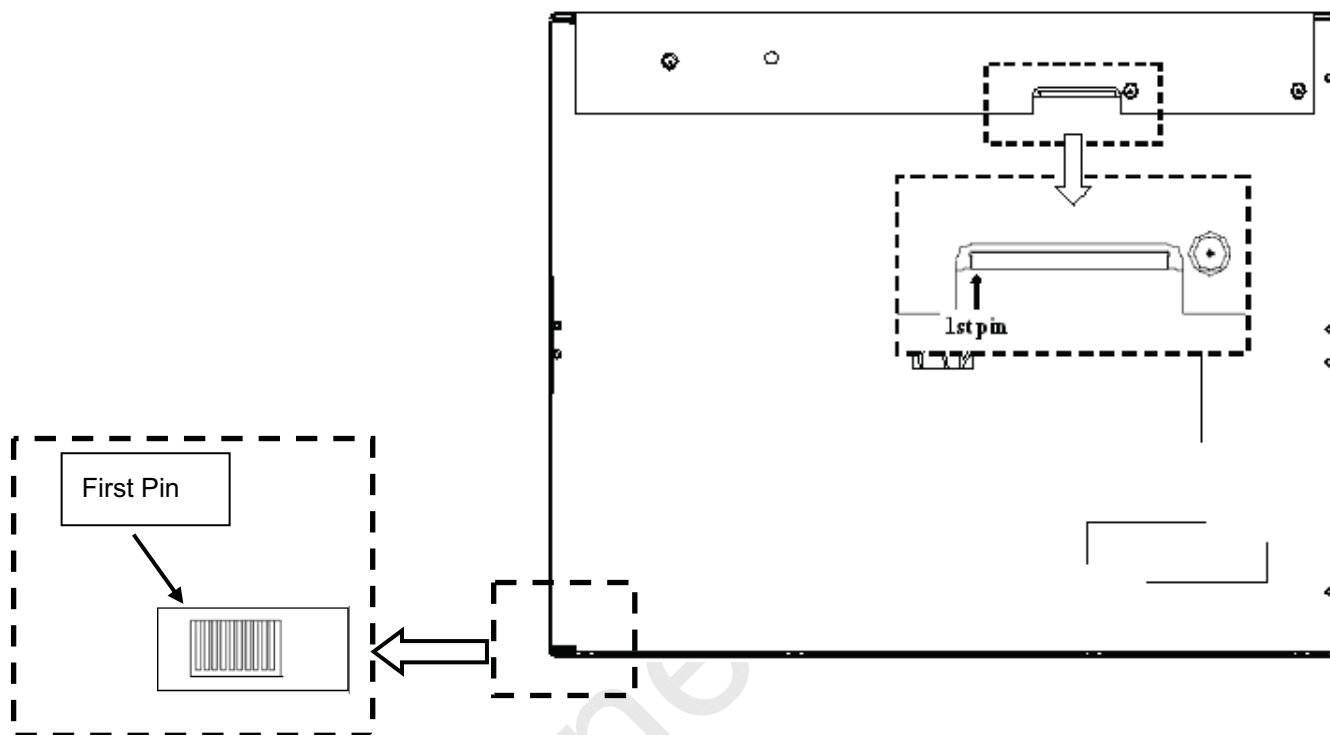
Connector

1.1TFT LCD Module

FOXCONN GS23302-0311R-7H or mechanical interface equivalent connector.

Pin No	Symbol	Description
Frame	VSS	Ground
1	RXinO0-	-LVDS differential data input, Chan 0-Odd
2	RXinO0+	+LVDS differential data input, Chan 0-Odd
3	RXinO1-	-LVDS differential data input, Chan 1-Odd
4	RXinO1+	+LVDS differential data input, Chan 1-Odd
5	RXinO2-	-LVDS differential data input, Chan 2-Odd
6	RXinO2+	+LVDS differential data input, Chan 2-Odd
7	VSS	Ground
8	RXOC-	-LVDS differential Clock input (Odd)
9	RXOC+	+LVDS differential Clock input (Odd)
10	RXinO3-	-LVDS differential data input, Chan 3-Odd
11	RXinO3+	+LVDS differential data input, Chan 3-Odd
12	RXinE0-	-LVDS differential data input, Chan 0-Even
13	RXinE0+	+LVDS differential data input, Chan 0-Even
14	VSS	Ground
15	RXinE1-	-LVDS differential data input, Chan 1-Even
16	RXinE1+	+LVDS differential data input, Chan 1-Even
17	VSS	Ground
18	RXinE2-	-LVDS differential data input, Chan 2-Even
19	RXinE2+	+LVDS differential data input, Chan 2-Even
20	RXEC-	-LVDS differential Clock input (Even)
21	RXEC+	+LVDS differential Clock input (Even)
22	RXinE3-	-LVDS differential data input, Chan 3-Even
23	RXinE3+	+LVDS differential data input, Chan 3-Even
24	VSS	Ground
25	NC	No Connection
26	NC	No Connection
27	NC	No Connection
28	VCC	+5.0V power supply
29	VCC	+5.0V power supply
30	VCC	+5.0V power supply
Frame	VSS	Ground

Issue Date: Apr. 30 2010
Model No.:MT190AW02 V.4



1.2 Recommend Connector for Backlight Unit

This connector is mounted on the monitor system board for LED light-bar FFC mating.

Connector Name/Designation	Match Connector
Manufacturer	Entery INDUSTRIAL CO.,LTD
Mating type part number	7080-Q10N-00R

Issue Date: Apr. 30 2010
Model No.:MT190AW02 V.4

1.3 LED Light Bar

Pin No	Symbol	Description
1	IRLED1	LED current sense for string1
2	IRLED2	LED current sense for string2
3	IRLED3	LED current sense for string3
4	IRLED4	LED current sense for string4
5	VLED	LED power supply
6	VLED	LED power supply
7	IRLED5	LED current sense for string5
8	IRLED6	LED current sense for string6
9	IRLED7	LED current sense for string7
10	IRLED8	LED current sense for string8

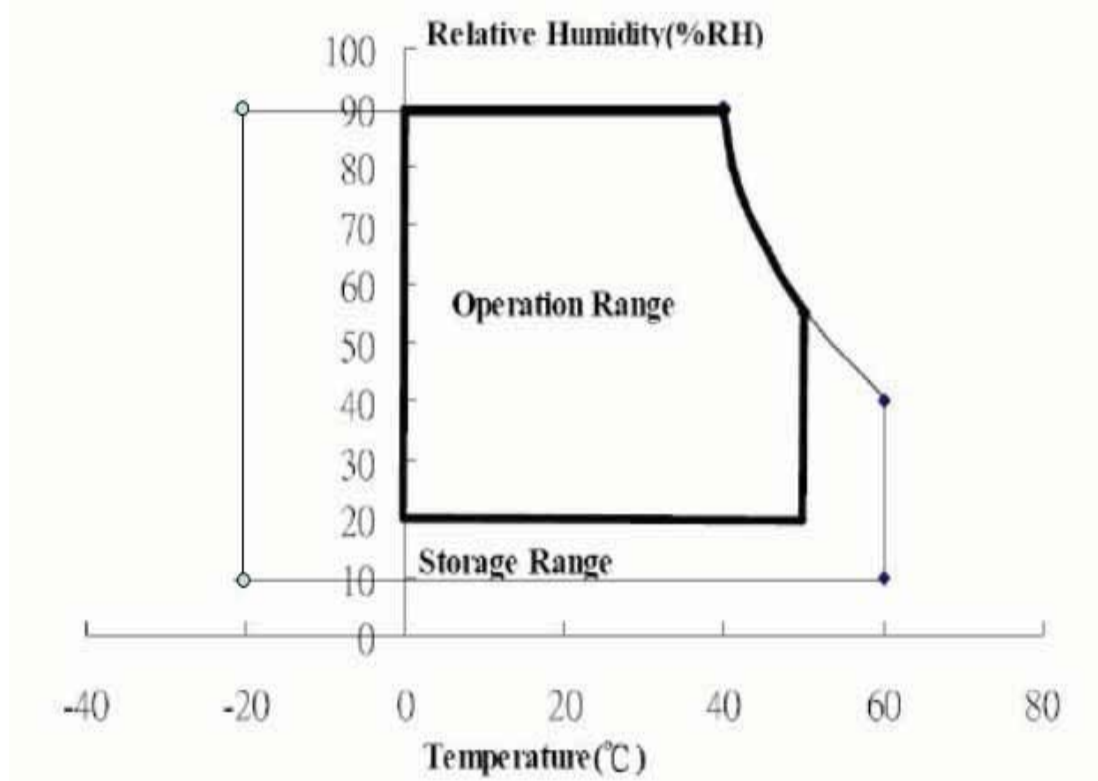
2. Absolute maximum ratings

Ta=25±2°C

Parameter	Symbol	Values			Unit	Note
		Min.	Typ.	Max.		
Power voltage	Vcc	-0.3	-	6.0	V	At25°C
Input signal voltage	V _{LH}	-0.3	-	4.3	V	At25°C
Storage temperature	T _{ST}	-20	-	60	°C	(1)
Operating Ambient temperature	T _{op}	0	-	50	°C	(2)

Note 1: The unit should not be exposed to corrosive chemicals.

Note 2: The relative humidity must not exceed 90% non-condensing at temperatures of 40°C or less. At temperatures greater than 40°C, the wet bulb temperature must not exceed 39°C.



3. Electrical characteristics

a. Typical operating conditions

Item		Symbol	Min.	Typ.	Max.	Unit	Remark
Input Voltage		V_{cc}	4.5	5	5.5	V	
Permissive Power Input Ripple		V_{RF}	-	-	0.2	V	
Input Current	Black	I_{cc}	-	700	1000	mA	Note 1
	White	I_{cc}	-	500	700		Note 2
	Mosaic	I_{cc}	-	700	1000		Note 3
Rush Current		I_{Rush}	-	1.6	3	A	Note 4
Logic Input Voltage LVDS: IN+, IN-	Common Mode Voltage	VCM	-	1.2	-	V	
	Differential Input Voltage	VID	200	-	600	mV	
	Threshold Voltage (High)	VTH	-	-	100	mV	Note 5
	Threshold Voltage (Low)	VTL	-100	-	-	mV	Note 5

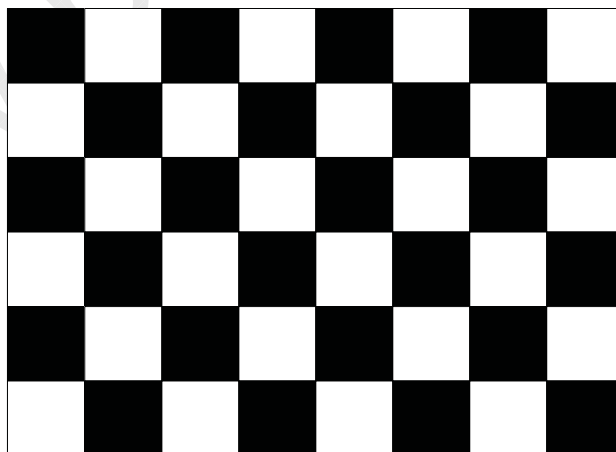
Note 1 : The specified current is under the $V_{cc} = 5V$, $25\text{ }^{\circ}C$, $f_v = 60Hz$ (frame frequency) condition whereas black pattern is displayed.

Note 2 : The specified current is under the $V_{cc} = 5V$, $25\text{ }^{\circ}C$, $f_v = 60Hz$ (frame frequency) condition whereas white pattern is displayed.

Note 3 : The specified current is under the $V_{cc} = 5V$, $25\text{ }^{\circ}C$, $f_v = 60Hz$ (frame frequency) condition whereas mosaic pattern(black & white [8*6]) is displayed.

White : 255 Gray

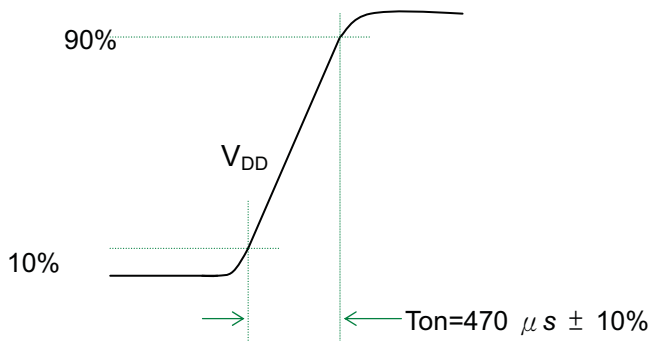
Black : 0 Gray



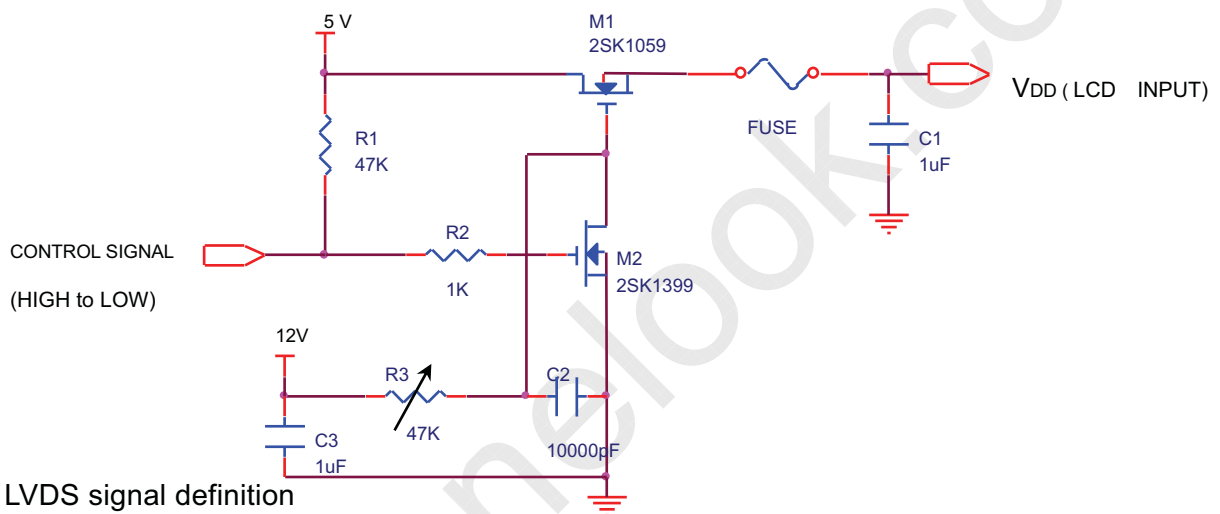
Issue Date: Apr. 30'2010
Model No.:MT190AW02 V.4

Note 4 : test condition :'

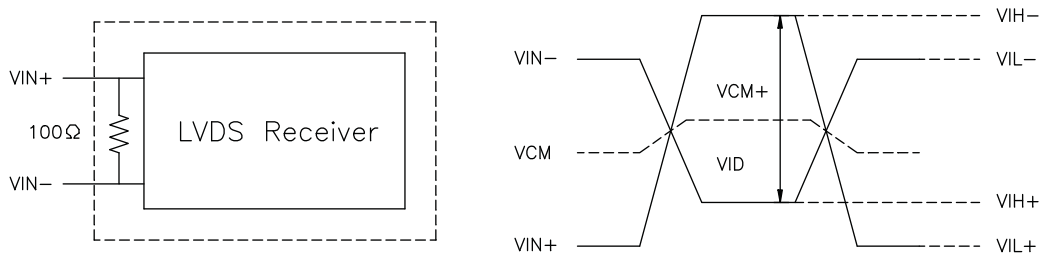
- (1) $V_{DD} = 5\text{ V}$, V_{DD} rising time = $470\ \mu\text{s} \pm 10\%$
- (2) Pattern: Mosaic pattern



(3) Test circuit



Note 5: LVDS signal definition



$VIN+$ = Positive differential DATA & CLK Input

$VIN-$ = Negative differential DATA & CLK Input

$VID = VIN+ - VIN-$,

$\Delta VCM = | VCM+ - VCM- |$,

$\Delta VID = | VID+ - VID- |$,

$VID+ = | VIH+ - VIH- |$,

$VID- = | VIL+ - VIL- |$,

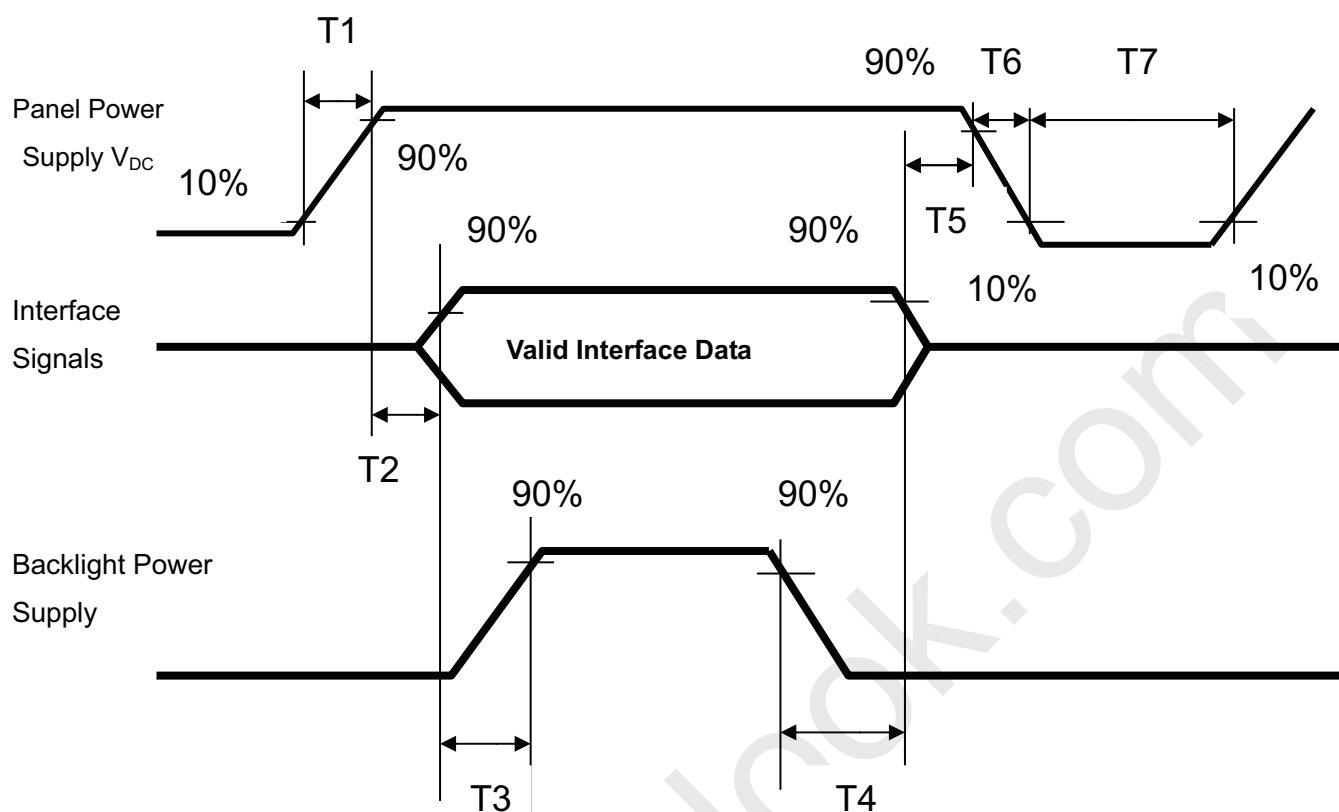
$VCM = (VIN+ + VIN-)/2$,

$VCM+ = (VIH+ + VIH-)/2$,

$VCM- = (VIL+ + VIL-)/2$,

Issue Date: Apr. 30'2010
Model No.:MT190AW02 V.4

Note 6 : Power on sequence for LCD V_{DD}



Parameter	Value			Unit
	Min	Typ	Max	
T1	0.1	-	10	ms
T2	0	30	50	ms
T3	200	250	-	ms
T4	100	250	-	ms
T5	0	20	50	ms
T6	0.1	-	50	ms
T7	1000	-	-	ms

b. Display color vs. input data signals

The brightness of each primary color (red, green and blue) is based on the 8-bit gray scale data input for the color; the higher the binary input, the brighter the color. The table below provides a reference for color versus data input.

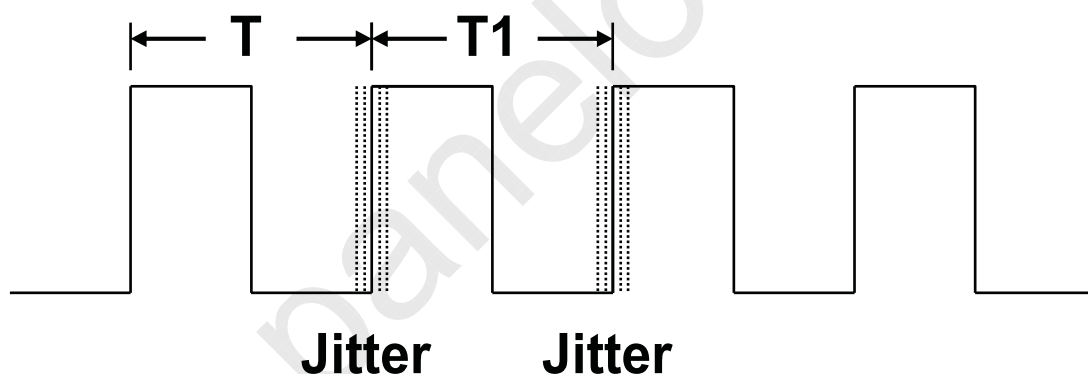
Color	Input color data																							
	Red								Green								Blue							
	MSB				LSB				MSB				LSB				MSB				LSB			
	R7	R6	R5	R4	R3	R2	R1	R0	G7	G6	G5	G4	G3	G2	G1	G0	B7	B6	B5	B4	B3	B2	B1	B0
Basic colors	Black	0	0	0	0	0	0	0	0	0	0	0	0	0	0	0	0	0	0	0	0	0	0	0
	Red(255)	1	1	1	1	1	1	1	0	0	0	0	0	0	0	0	0	0	0	0	0	0	0	0
	Green(255)	0	0	0	0	0	0	0	1	1	1	1	1	1	1	0	0	0	0	0	0	0	0	0
	Blue(255)	0	0	0	0	0	0	0	0	0	0	0	0	0	0	1	1	1	1	1	1	1	1	1
	Cyan	0	0	0	0	0	0	0	1	1	1	1	1	1	1	1	1	1	1	1	1	1	1	1
	Magenta	1	1	1	1	1	1	1	0	0	0	0	0	0	0	0	1	1	1	1	1	1	1	1
	Yellow	1	1	1	1	1	1	1	1	1	1	1	1	1	1	0	0	0	0	0	0	0	0	0
	White	1	1	1	1	1	1	1	1	1	1	1	1	1	1	1	1	1	1	1	1	1	1	1
Red	Red(000) dark	0	0	0	0	0	0	0	0	0	0	0	0	0	0	0	0	0	0	0	0	0	0	0
	Red(001)	0	0	0	0	0	0	1	0	0	0	0	0	0	0	0	0	0	0	0	0	0	0	0
	Red(002)	0	0	0	0	0	0	1	0	0	0	0	0	0	0	0	0	0	0	0	0	0	0	0
	:	:	:	:	:	:	:	:	:	:	:	:	:	:	:	:	:	:	:	:	:	:	:	:
	Red(253)	1	1	1	1	1	1	0	1	0	0	0	0	0	0	0	0	0	0	0	0	0	0	0
	Red(254)	1	1	1	1	1	1	1	0	0	0	0	0	0	0	0	0	0	0	0	0	0	0	0
	Red(255) bright	1	1	1	1	1	1	1	1	0	0	0	0	0	0	0	0	0	0	0	0	0	0	0
Green	Green(000)dark	0	0	0	0	0	0	0	0	0	0	0	0	0	0	0	0	0	0	0	0	0	0	0
	Green(001)	0	0	0	0	0	0	0	0	0	0	0	0	0	0	1	0	0	0	0	0	0	0	0
	Green(002)	0	0	0	0	0	0	0	0	0	0	0	0	0	1	0	0	0	0	0	0	0	0	0
	:	:	:	:	:	:	:	:	:	:	:	:	:	:	:	:	:	:	:	:	:	:	:	:
	Green(253)	0	0	0	0	0	0	0	1	1	1	1	1	1	0	1	0	0	0	0	0	0	0	0
	Green(254)	0	0	0	0	0	0	0	1	1	1	1	1	1	1	0	0	0	0	0	0	0	0	0
	Green(255)bright	0	0	0	0	0	0	0	1	1	1	1	1	1	1	1	0	0	0	0	0	0	0	0
Blue	Blue(000) dark	0	0	0	0	0	0	0	0	0	0	0	0	0	0	0	0	0	0	0	0	0	0	0
	Blue(001)	0	0	0	0	0	0	0	0	0	0	0	0	0	0	0	0	0	0	0	0	0	0	1
	Blue(002)	0	0	0	0	0	0	0	0	0	0	0	0	0	0	0	0	0	0	0	0	0	1	0
	:	:	:	:	:	:	:	:	:	:	:	:	:	:	:	:	:	:	:	:	:	:	:	:
	Blue(253)	0	0	0	0	0	0	0	0	0	0	0	0	0	0	0	1	1	1	1	1	1	0	1
	Blue(254)	0	0	0	0	0	0	0	0	0	0	0	0	0	0	0	1	1	1	1	1	1	1	0
	Blue(255) bright	0	0	0	0	0	0	0	0	0	0	0	0	0	0	0	1	1	1	1	1	1	1	1

c. Input signal timing

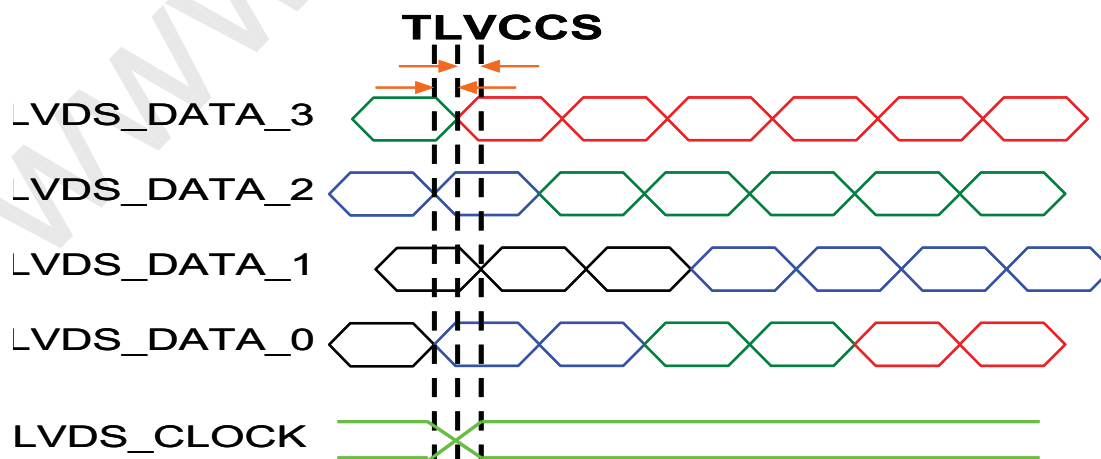
Support Input Timing Table

	Item	Description	Min.	Typ.	Max.	Unit	Remark
Clock	T_C	Period	17.24	22.5	27	nS	
	F_C	Frequency	37	44.4	58	MHz	
Spread Spectrum	T_{RCL}	Input Cycle to Cycle Jitter	$-0.02 \cdot T_C$	---	$0.02 \cdot T_C$	ns	Note1
	T_{LVCCS}	Channel to Channel Skew	$-0.02 \cdot T_C$	---	$0.02 \cdot T_C$	ns	Note2
	F_{SSMR}	Spread Spectrum Modulation Range	$0.97 \cdot F_C$	---	$1.03 \cdot F_C$	MHz	Note3
	F_{SSMF}	Spread Spectrum Modulation Frequency	---	---	100	KHz	
Vertical	T_{V_TOTAL}	V total line number	905	926	942	T_{H_TOTAL}	Note4
	T_{V_DATA}	Data duration	—	900	—	T_{H_TOTAL}	
	T_{VB}	V-blank	5	26	—	T_{H_TOTAL}	
	f_V	frequency	50	60	75	Hz	
Horizontal	T_{H_TOTAL}	H total pixel number	752	800	968	T_C	
	T_{H_DATA}	Data duration	—	720	—	T_C	
	T_{HB}	H-blank	32	80	—	T_C	

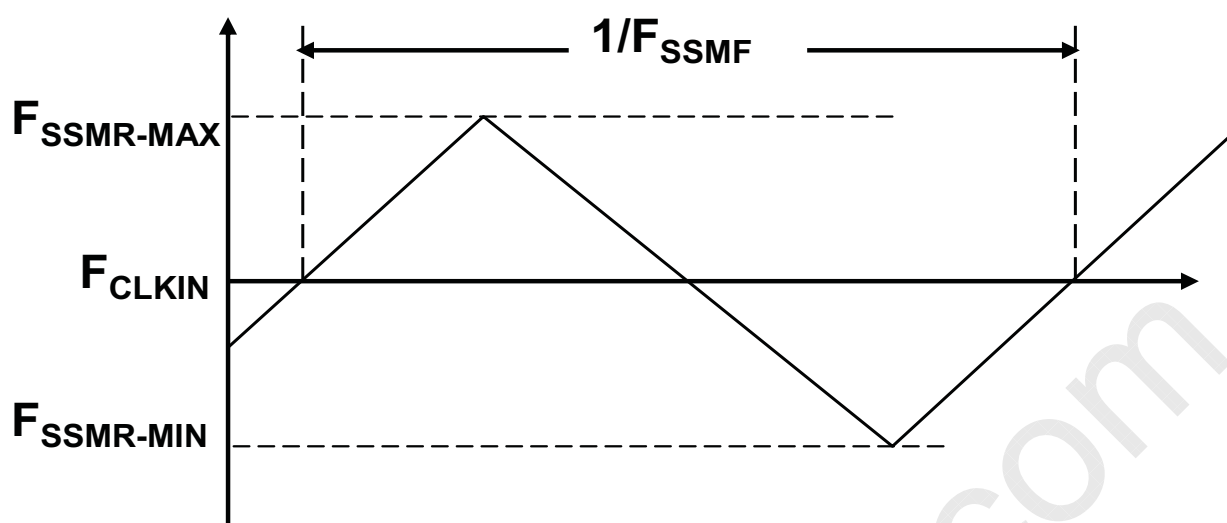
Note: (1) .The input cycle to cycle jitter is defined as below figures. $T_{RCL} = |T_1 - T|$



(2) .The input channel to channel skew is defined as below figures.

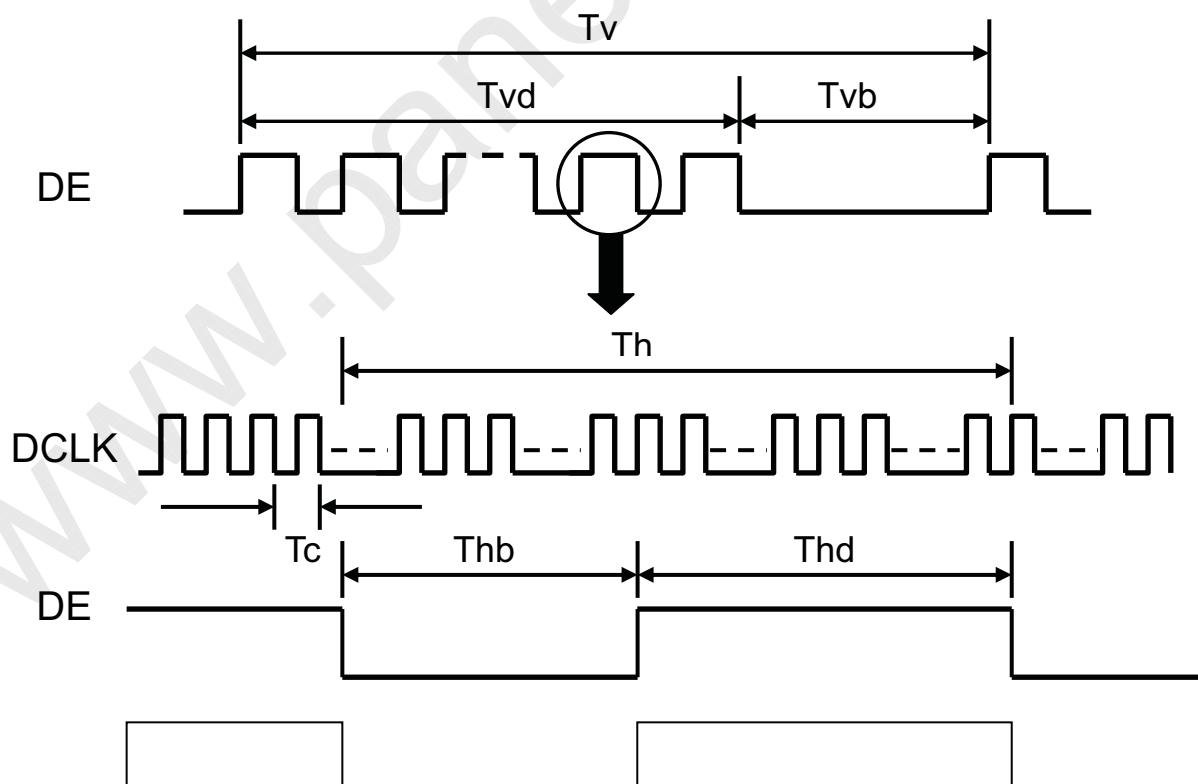


(3). The spread spectrum modulation range and frequency is defined as below figures.



(4). Because this module is operated by DE only mode, Hsync and Vsync input signals should be set to low Logic level or ground. Otherwise, this module would operate abnormally.

DATA INPUT SIGNAL TIMING DIAGRAM



d. Display Position

D(1, 1)	D(2, 1)	D(720, 1)	D(1439, 1)	D(1440, 1)
D(1, 2)	D(2, 2)	D(720, 2)	D(1439, 2)	D(1440, 2)
⋮		⋮	⋮	⋮
D(1, 450)	D(2, 450)	D(720, 450)	D(1439, 450)	D(1440, 450)
⋮		⋮	⋮	⋮
D(1, 899)	D(2, 899)	D(720, 899)	D(1439, 899)	D(1440, 899)
D(1, 900)	D(2, 900)	D(720, 900)	D(1439, 900)	D(1440, 900)

e. Backlight Unit

Parameter	Symbol	Value			Unit	Note
		Min.	Typ.	Max.		
Light Bar Input Voltage	VLED	---	34.9	38.2	VDC	(Duty 100%)
Light Bar Input Current	ILED	---	200	220	mADC	(1),(2),(3)
Power Consumption	PLED	---	6.9	8.4	W	(4)
LED Life Time	LBL	30000	---	---	Hrs	(5)

Note (1): There are one Light Bar, and the specified current is input LED chip 100% duty current.

Note (2): The sensing current of each string is 25mA.

Note (3): The light bar have eight current sensing strings, so that the light bar input current is 200mA.

Note (4): $P_{LED} = I_{LED} \times V_{LED}$.

Note (5): The life time is determined as the time at which luminance of the LED becomes 50% of the initial brightness or not normal lighting at $I_{LED}=200mA$ on condition of continuous operating at $25\pm 2^{\circ}C$.

C. Optical specifications

Item	Symbol	Condition	Specification			Unit	Remark
			Min.	Typ.	Max.		
Response time	Tr	$\theta = 0^\circ$	-	1.5	4	ms	Note 2
	Tf		-	3.5	6		
	Tr+Tf		-	5	10		
Contrast ratio	CR	$\theta = 0^\circ$	700	1000	-		Note 1,3
Viewing angle	Top	$CR \geq 10$	70	80	-	deg.	Note 1,3,4
	Bottom	$CR \geq 10$	70	80	-		
	Left	$CR \geq 10$	75	85	-		
	Right	$CR \geq 10$	75	85	-		
Brightness (Center)	Y_L		200	250	-	nits	Note 1
Color chromaticity(CIE)	W_x	$\theta = 0^\circ$	-0.03	0.313	+0.03		Note 1
	W_y			0.329			
	R_x			TBD			
	R_y			TBD			
	G_x			TBD			
	G_y			TBD			
	B_x			TBD			
	B_y			TBD			
White uniformity (9) points)	δ_w		0.70	0.75	-		Note 1,5
Cross talk	Ct		-	-	2%		Note 6

Note: 1. Ambient temperature = 25°C.

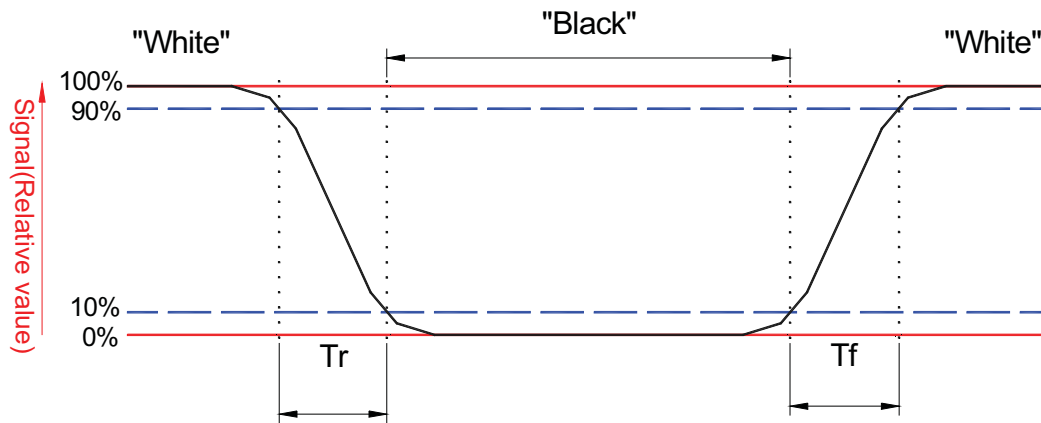
2. To be measured in dark room after backlight warm up 10 minutes.

Note 1: To be measured with a viewing cone of 2° by Topcon luminance meter BM-5A.

Note 2: Definition of response time:

The output signals of BM-7 are measured when the input signals are changed from "Black" to "White" (falling time) and from "White" to "Black" (rising time), respectively. The response time interval is between the 10% and 90% of amplitudes. Refer to figure as below.

Issue Date: Apr. 30 2010
Model No.:MT190AW02 V.4

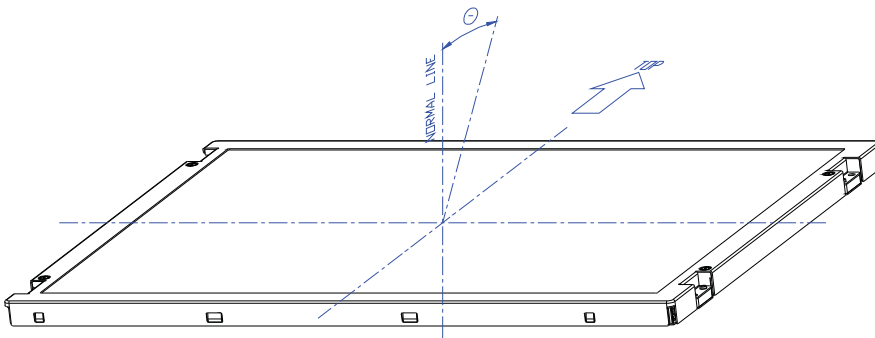


Note 3: Definition of contrast ratio:

Contrast ratio is calculated by the following formula.

$$\text{Contrast ratio (CR)} = \frac{\text{Brightness on the "white" state}}{\text{Brightness on the "black" state}}$$

Note 4: Definition of viewing angle

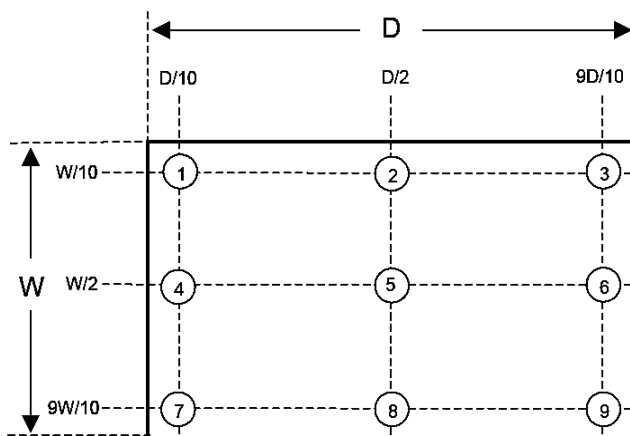


Note 5: Definition white uniformity:

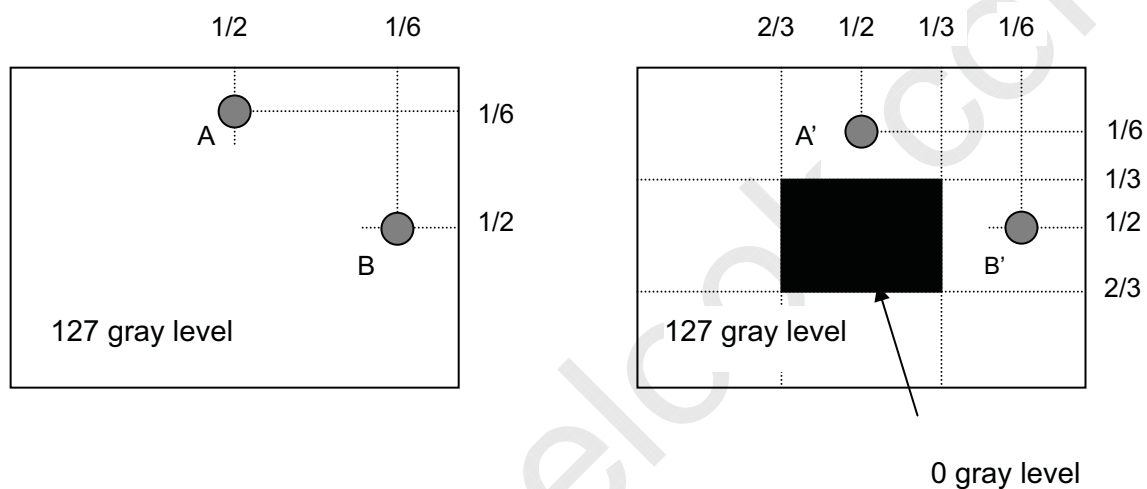
Luminance are measured at the following nine points (P1~P9).

$$\delta_w = \frac{\text{Minimum Brightness of nine points (P1~P9).}}{\text{Maximum Brightness of nine points (P1~P9).}}$$

Issue Date: Apr. 30 2010
 Model No.:MT190AW02 V.4



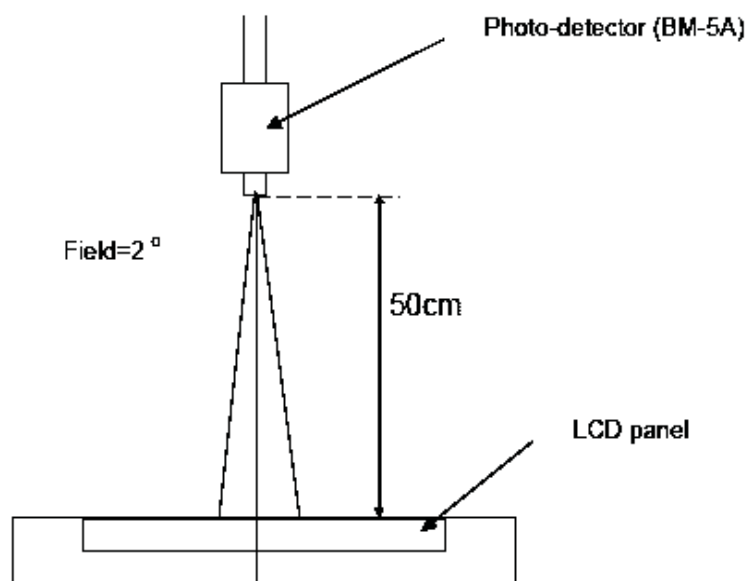
Note 6:



$|L_A - L_{A'}| / L_A \times 100\% = 2\% \text{ max.}$, L_A and $L_{A'}$ are brightness at location A and A'

$|L_B - L_{B'}| / L_B \times 100\% = 2\% \text{ max.}$, L_B and $L_{B'}$ are brightness at location B and B'

Note 10: Optical characteristic measurement setup.



D. Reliability test items

Test Item	Test Condition	Judgment	Remark
High temperature storage	60°C, 240Hrs	Note 1	Note 2
Low temperature storage	-20°C, 240Hrs	Note 1	Note 2
High temperature & high humidity operation	40°C, 90%RH, 240Hrs (No condensation)	Note 1	Note 2
High temperature operation	50°C, 240Hrs	Note 1	Note 2
Low temperature operation	0°C, 240Hrs	Note 1	Note 2
Thermal Shock (non-operation)	-20°C~60°C 1Hr, 1Hr, 100cycles	Note 1	Note 2
Electrostatic discharge (ESD)	Contact: +/-8kV, 150pF(330ohms), 16points 10 times/1 point, 1 time/1 sec Air discharge: +/-15kV, 150pF(330ohms), 9 points, 10 times/1 point, 1 time/1 sec	Note 1	Note 2
Vibration (non-operation)	Vibration level : 1.5G Bandwidth : 10-300Hz Waveform : sine wave, sweep rate : 10min 30 min for each direction X, Y, Z (1.5 Hrs in total)	Note 1	Note 2
Mechanical Shock (non-operation)	Shock level : 50G, 11ms Waveform : Half sine wave Direction : ±X, ±Y, ±Z One time each direction	Note 1	Note 2
MTBF Demonstration	30,000 hours with confidence level 90%	Note 1	Note 3

Note1: Pass: Normal display image with no obvious non-uniformity and no line defect.

Partial transformation of the module parts should be ignored.

Fail: No display image, obvious non-uniformity, or line defects.

Note2: Evaluation should be tested after storage at room temperature for two hours.

Note 3: The MTBF calculation is based on the assumption that the failure rate distribution meets the Exponential Model

E. Safety

(1) Sharp Edge Requirements

There will be no sharp edges or corners on the display assembly that could cause injury.

(2) Materials

a. Toxicity

There will be no carcinogenic materials used anywhere in the display module. If toxic materials are used, they will be reviewed and approved by the responsible InnoLux Toxicologist.

b. Flammability

All components including electrical components that do not meet the flammability grade UL94-V1 in the module will complete the flammability rating exception approval process. The printed circuit board will be made from material rated 94-V1 or better.

c. Capacitors

If any polarized capacitors are used in the display assembly, provisions will be made to keep them from being inserted backwards.

F. Display quality

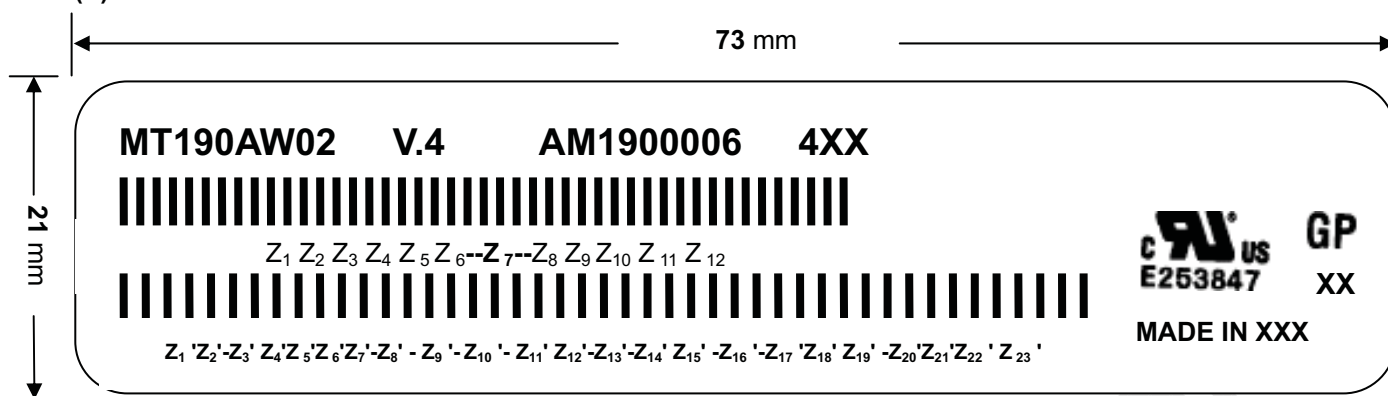
The display quality of the color TFT-LCD module should be in compliance with the Innolux's Incoming inspection standard.

G. Handling precaution

The Handling of the TFT-LCD should be in compliance with the Innolux's handling principle standard.

H. Label

(1) Module Label



(a) Model Number: MT190AW02

(b) Version: V.4

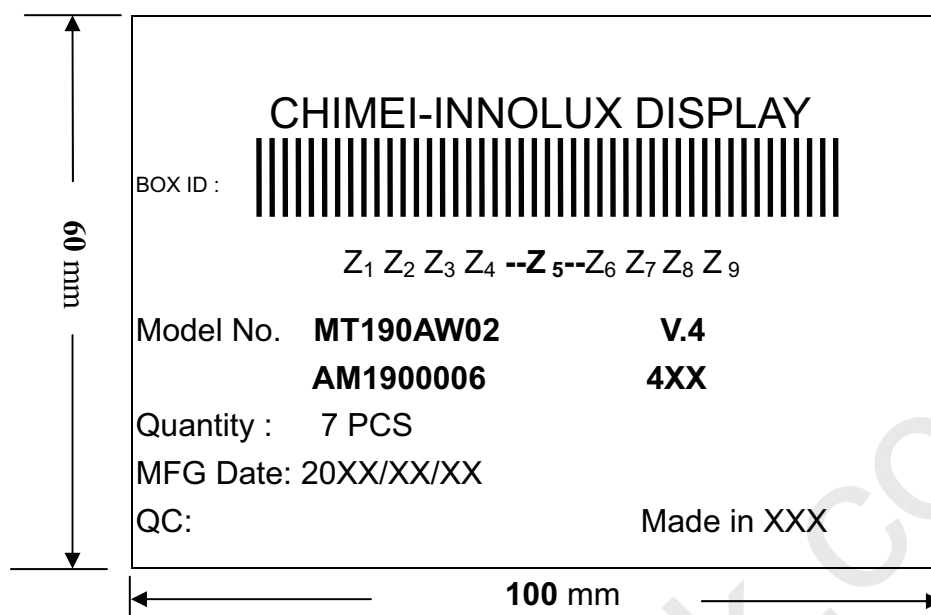
(c) Serial ID I: Z₁ Z₂ Z₃ Z₄ Z₅ Z₆ Z₇ Z₈ Z₉ Z₁₀ Z₁₁ Z₁₂



Serial ID includes the information as below:

1. Manufactured Date: Year: 0~9, for 2000~2009
2. Month: 1~9 & A~C for Jan.~Dec.
3. Date: 1~9 & A~Z (exclude I, O, Q, U) for 1st~31th
4. Code of grade: 1, 2, 3, 5, E
5. Serial No: Module manufacture sequence no

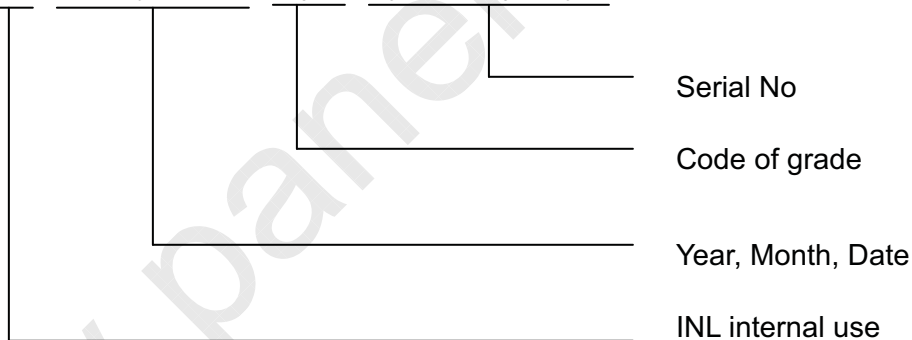
(d) Serial ID II (INL internal use)

(2) Carton Label

(a) Model Number: MT190AW02

(b) Version: V.4

(c) Packing quantity:7 pcs

(d) Serial ID: Z₁ Z₂ Z₃ Z₄ Z₅ Z₆ Z₇ Z₈ Z₉

Serial ID includes the information as below:

(a) Manufactured Date: Year: 0~9, for 2000~2009

Month: 1~9 & A~C for Jan.~Dec.

Date: 1~9 & A~Z (exclude I, O, Q, U) for 1st~31th

(b) Code of grade: 1,2, 3, 5, E

(c) Serial No: Module packing sequence no

I. Mechanical drawing

