

MTE2050

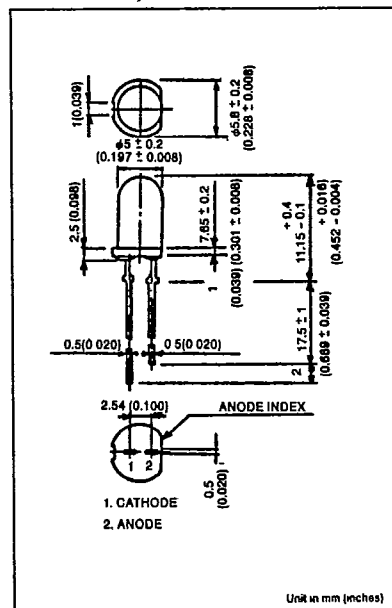
T-41-11

APPLICATIONS

- OPTICAL SWITCH

FEATURES

- Output spectrally compatible with silicon sensor MTD6100.
- High radiant power.
- High radiant intensity.

**MAXIMUM RATINGS (Ta = 25°C)**

CHARACTERISTIC	SYMBOL	RATING	UNIT
Forward Current	I_F	100	mA
Reverse Voltage	V_R	5	V
Peak Pulse Current*	I_{FP}	1	A
Operating Temperature Range	T_{opr}	-20 ~ 75	°C
Storage Temperature Range	T_{stg}	-30 ~ 100	°C

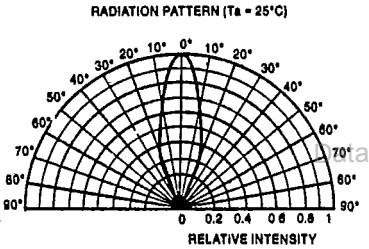
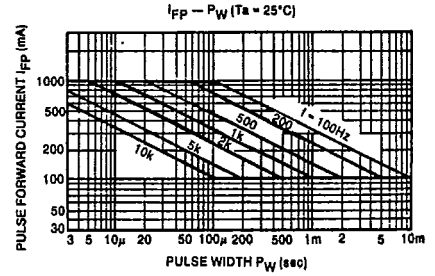
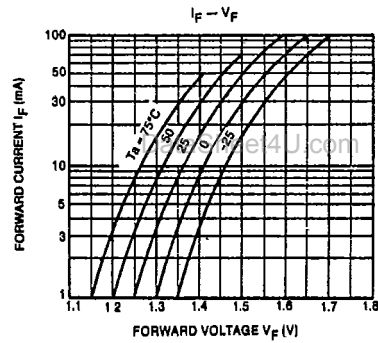
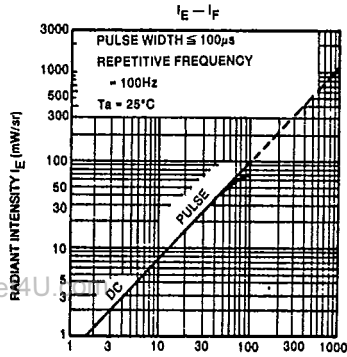
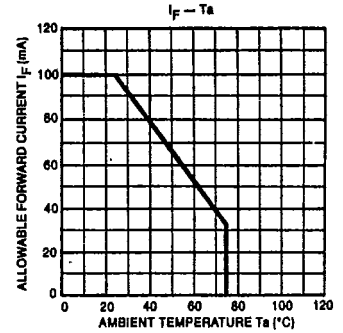
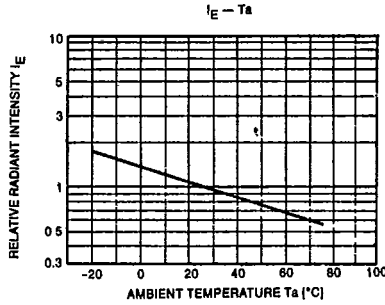
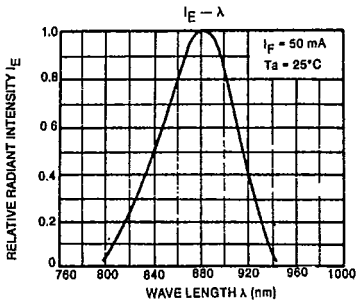
*Pulse width $\leq 100 \mu s$, frequency = 100Hz.

OPTO-ELECTRICAL CHARACTERISTICS (Ta=25°C)

CHARACTERISTIC	SYMBOL	TEST CONDITION	MIN	TYP.	MAX.	UNIT
Forward Voltage	V_F	$I_F=50mA$	—	1.5	1.9	V
Reverse Current	I_R	$V_R=5V$	—	—	10	μA
Radiant Intensity	I_E	$I_F=50mA$	14	40	—	mW/sr
Radiant Power	P_O	$I_F=50mA$	—	10	—	mW
Viewing Angle	θ_{HP}	$I_F=50mA$	—	± 13	—	°
Spectral Line Half Width	$\Delta\lambda$	$I_F=50mA$	—	80	—	nm
Peak Wave Length	λ_P	$I_F=50mA$	—	880	—	nm
Capacitance	C_T	$V_R=0, f=1MHz$	—	17	—	pF

INFRARED LED

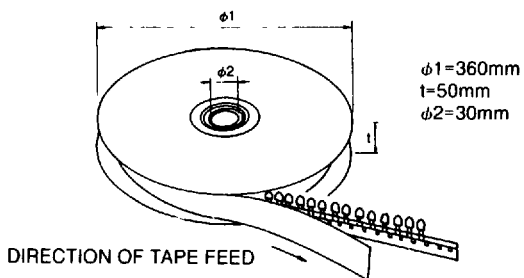
T-41-11



APPLICATION NOTES

[4] Packaging Reel Packaging

a) Reel type



T-1 and T- 1 3/4 packages

*Lamps with external shapes other than those above are also available. Please consult Marktech.

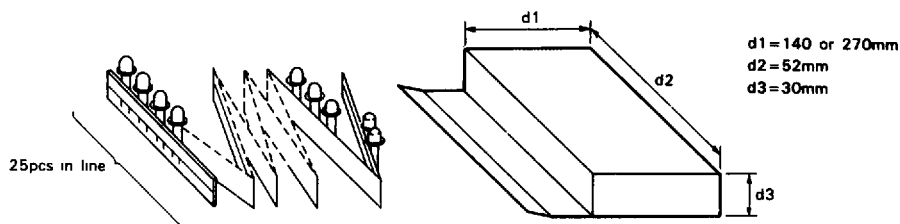
Content

LED Type	Quantity/Reel
$\phi 3$ Series	2000 pcs
$\phi 5$ Series	1000 pcs

et4U.com

b) Zigzag wound tape

DataSheet4U.com



At tape beginning and end, there is additional space for 4 pcs or more

Content

LED Type	Quantity/Box
$\phi 3$ Series	2000 or 5000 pcs
$\phi 5$ Series	1000 or 2000 pcs

