

1A, 50V - 600V Ultra Fast Surface Mount Rectifier

FEATURES

- AEC-Q101 qualified
- Glass passivated chip junction
- Ideal for automated placement
- Ultra Fast recovery time for high efficiency
- Low forward voltage, low power loss
- Moisture sensitivity level: level 1, per J-STD-020
- RoHS Compliant
- Halogen-free according to IEC 61249-2-21

APPLICATIONS

- DC to DC converter
- Automotive application
- Car lighting
- Snubber
- Freewheeling application

MECHANICAL DATA

- Case: DO-214AA (SMB)
- Molding compound meets UL 94V-0 flammability rating
- Terminal: Matte tin plated leads, solderable per J-STD-002
- Meet JESD 201 class 2 whisker test
- Polarity: Indicated by cathode band
- Weight: 0.090g (approximately)

KEY PARAMETERS		
PARAMETER	VALUE	UNIT
I_F	1	A
V_{RRM}	50 - 600	V
I_{FSM}	40, 35	A
T_{JMAX}	175	°C
Package	DO-214AA (SMB)	
Configuration	Single die	


DO-214AA (SMB)


ABSOLUTE MAXIMUM RATINGS ($T_A = 25^\circ\text{C}$ unless otherwise noted)								
PARAMETER	SYMBOL	MUR 105S H	MUR 110S H	MUR 115S H	MUR 120S H	MUR 140S H	MUR 160S H	UNIT
Marking code on the device		MUR 105S	MUR 110S	MUR 115S	MUR 120S	MUR 140S	MUR 160S	
Repetitive peak reverse voltage	V_{RRM}	50	100	150	200	400	600	V
Reverse voltage, total rms value	$V_{R(RMS)}$	35	70	105	140	280	420	V
Forward current	I_F	1						A
Surge peak forward current, 8.3ms single half sine-wave superimposed on rated load	I_{FSM}	40				35		A
Junction temperature	T_J	- 55 to +175						°C
Storage temperature	T_{STG}	- 55 to +175						°C

THERMAL PERFORMANCE			
PARAMETER	SYMBOL	TYP	UNIT
Junction-to-lead thermal resistance	$R_{\theta JL}$	17	°C/W

ELECTRICAL SPECIFICATIONS (TA = 25°C unless otherwise noted)						
PARAMETER		CONDITIONS	SYMBOL	TYP	MAX	UNIT
Forward voltage ⁽¹⁾	MUR105SH MUR110SH MUR115SH MUR120SH	$I_F = 1A, T_J = 25^\circ C$	V_F	-	0.875	V
						V
						V
						V
	MUR140SH MUR160SH			-	1.250	V
						V
	MUR105SH MUR110SH MUR115SH MUR120SH	$I_F = 1A, T_J = 150^\circ C$		-	0.710	V
						V
V						
V						
MUR140SH MUR160SH		-	1.050	V		
				V		
Reverse current @ rated V_R ⁽²⁾	MUR105SH MUR110SH MUR115SH MUR120SH	$T_J = 25^\circ C$	I_R	-	2	μA
						μA
						μA
						μA
	MUR140SH MUR160SH			-	5	μA
						μA
	MUR105SH MUR110SH MUR115SH MUR120SH	$T_J = 150^\circ C$		-	50	μA
						μA
μA						
μA						
MUR140SH MUR160SH		-	150	μA		
				μA		
Reverse recovery time	MUR105SH MUR110SH MUR115SH MUR120SH	$I_F = 0.5A, I_R = 1.0A$ $I_{rr} = 0.25A$	t_{rr}	-	25	ns
						ns
						ns
						ns
	MUR140SH MUR160SH			-	50	ns
						ns

Notes:

1. Pulse test with PW = 0.3ms
2. Pulse test with PW = 30ms

ORDERING INFORMATION

ORDERING CODE⁽¹⁾	PACKAGE	PACKING
MUR1xSH	DO-214AA (SMB)	3,000 / Tape & Reel

Notes:

1. "x" defines voltage from 50V(MUR105SH) to 600V(MUR160SH)

CHARACTERISTICS CURVES

($T_A = 25^\circ\text{C}$ unless otherwise noted)

Fig.1 Forward Current Derating Curve

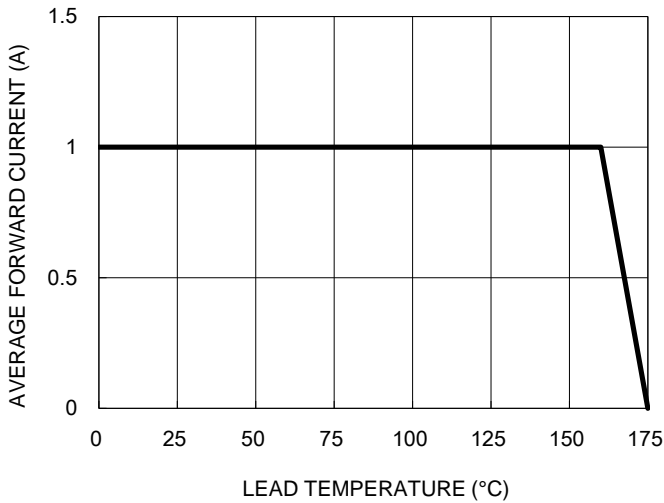


Fig.2 Typical Junction Capacitance

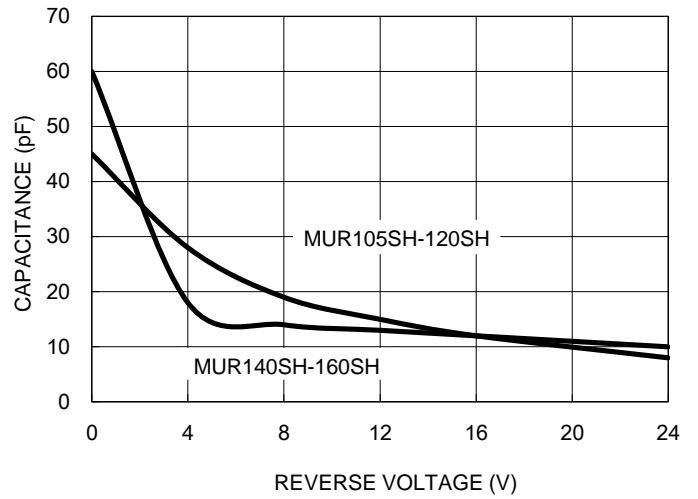


Fig.3 Typical Reverse Characteristics

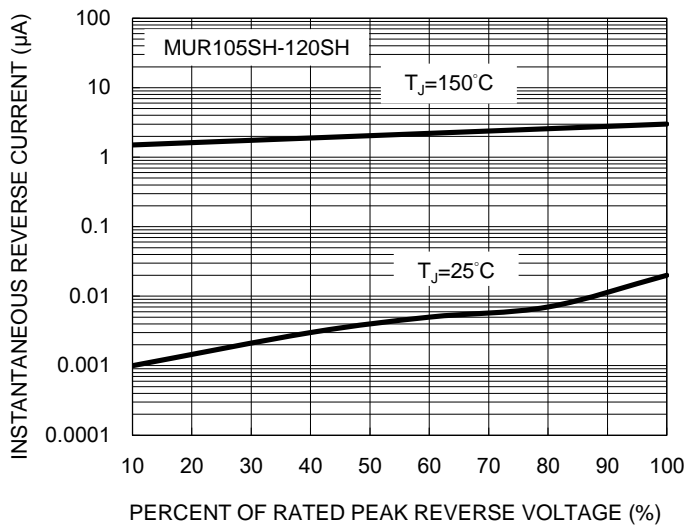
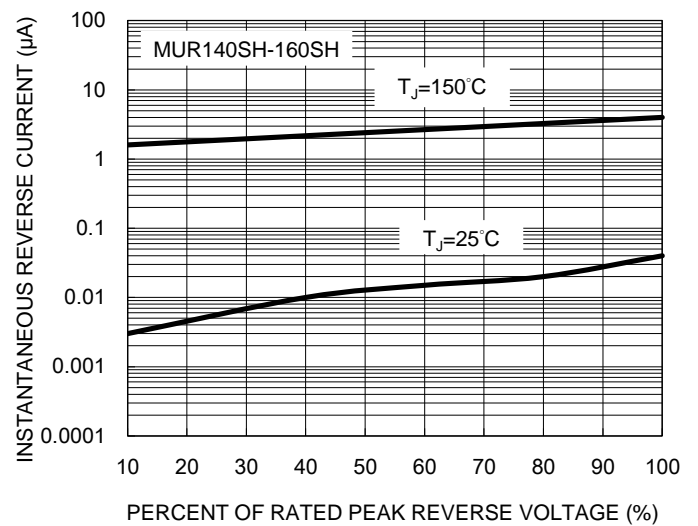


Fig.4 Typical Reverse Characteristics



CHARACTERISTICS CURVES

($T_A = 25^\circ\text{C}$ unless otherwise noted)

Fig.5 Typical Forward Characteristics

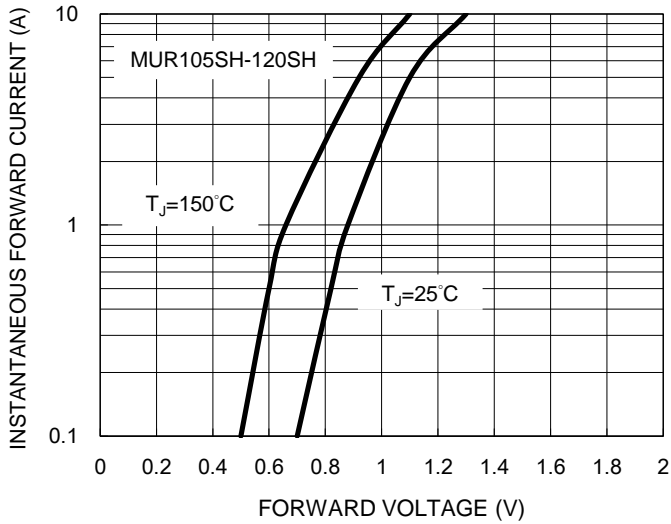


Fig.6 Typical Forward Characteristics

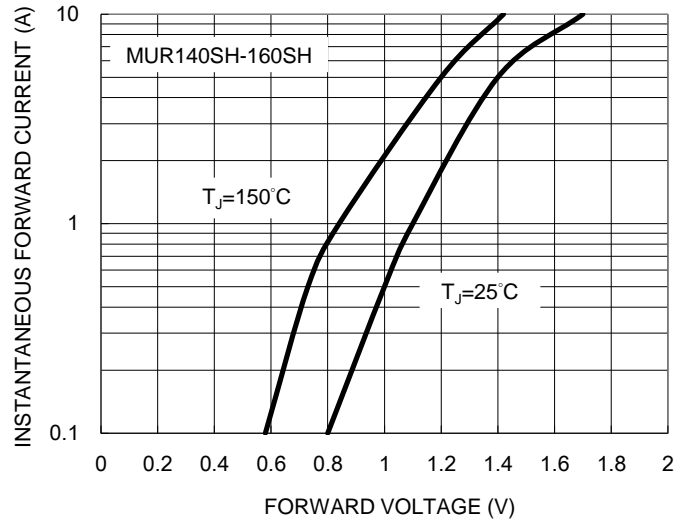
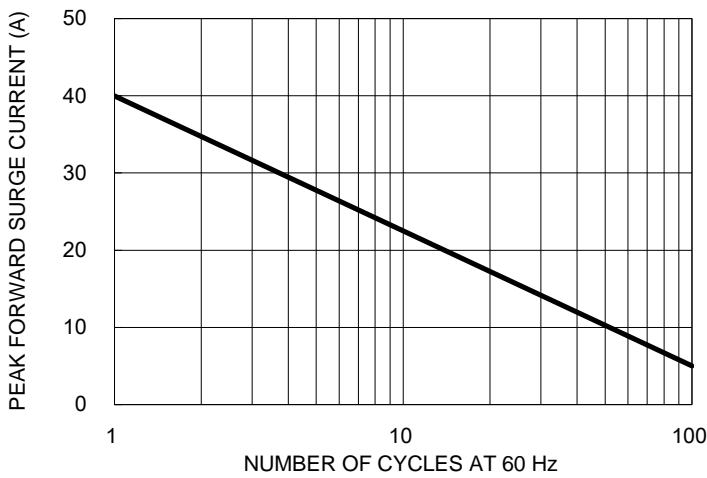
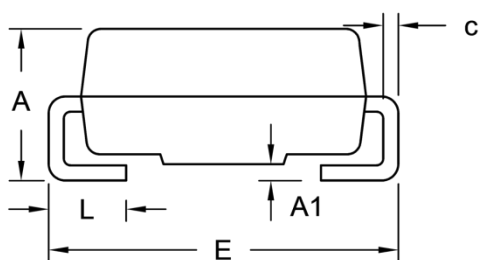
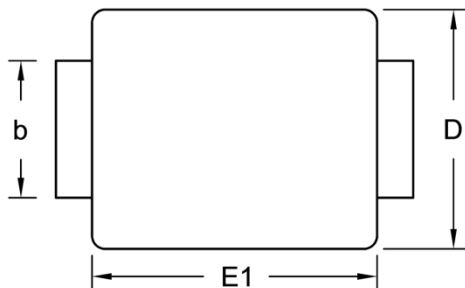


Fig.7 Maximum Non-repetitive Forward Surge Current



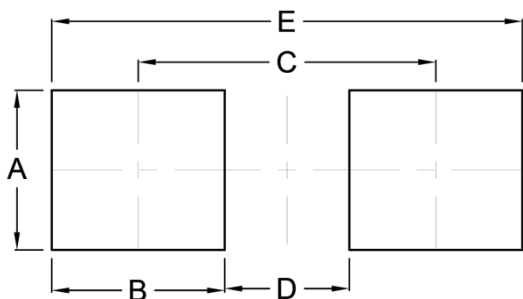
PACKAGE OUTLINE DIMENSIONS

DO-214AA (SMB)



DIM.	Unit (mm)		Unit (inch)	
	Min.	Max.	Min.	Max.
A	1.95	2.65	0.077	0.104
A1	0.05	0.20	0.002	0.008
b	1.95	2.20	0.077	0.087
c	0.15	0.31	0.006	0.012
D	3.30	3.95	0.130	0.156
E	5.10	5.60	0.201	0.220
E1	4.05	4.60	0.159	0.181
L	0.75	1.60	0.030	0.063

SUGGESTED PAD LAYOUT



Symbol	Unit (mm)	Unit (inch)
A	2.30	0.091
B	2.50	0.098
C	4.30	0.169
D	1.80	0.071
E	6.80	0.268

MARKING DIAGRAM



- P/N = Marking Code
- G = Green Compound
- YW = Date Code
- F = Factory Code

Notice

Specifications of the products displayed herein are subject to change without notice. TSC or anyone on its behalf assumes no responsibility or liability for any errors or inaccuracies.

Purchasers are solely responsible for the choice, selection, and use of TSC products and TSC assumes no liability for application assistance or the design of Purchasers' products.

Information contained herein is intended to provide a product description only. No license, express or implied, to any intellectual property rights is granted by this document. Except as provided in TSC's terms and conditions of sale for such products, TSC assumes no liability whatsoever, and disclaims any express or implied warranty, relating to sale and/or use of TSC products including liability or warranties relating to fitness for a particular purpose, merchantability, or infringement of any patent, copyright, or other intellectual property right.

The products shown herein are not designed for use in medical, life-saving, or life-sustaining applications. Customers using or selling these products for use in such applications do so at their own risk and agree to fully indemnify TSC for any damages resulting from such improper use or sale.