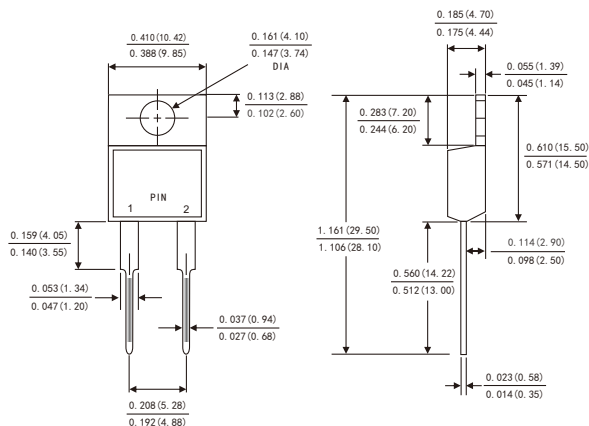


FEATURES

- Plastic package has Underwriters Laboratory Flammability Classification 94V-0
- Fast switching for high efficiency
- Low forward voltage drop
- Single rectifier construction
- High surge capability
- For use in low voltage ,high frequency inverters, free wheeling ,and polarity protection applications
- High temperature soldering guaranteed:260°C/10 seconds, 0.25"(6.35mm)from case
- Component in accordance to RoHS 2011/65/EU



TO-220AC



Dimensions in inches and (millimeters)

MECHANICAL DATA

- Case: JEDEC TO-220AC molded plastic body
- Terminals: Lead solderable per MIL-STD-750,method 2026
- Polarity: As marked
- Mounting Position: Any

MAXIMUM RATINGS AND ELECTRICAL CHARACTERISTICS

(Ratings at 25°C ambient temperature unless otherwise specified ,Single phase ,half wave ,resistive or inductive load. For capacitive load,derate by 20%.)

| Parameters | | Symbols | MUR880 | | | | Units |
|--|--------------------|-----------------|------------|-----|------|-----|---------------|
| Maximum repetitive peak reverse voltage | | V_{RRM} | 800 | | | | Volts |
| Maximum RMS voltage | | V_{RMS} | 560 | | | | Volts |
| Maximum DC blocking voltage | | V_{DC} | 800 | | | | Volts |
| Maximum average forward rectified current(see Fig.1) | | $I_{(AV)}$ | 8.0 | | | | Amps |
| Peak forward surge current 8.3ms single half sine-wave superimposed on rated load (JEDEC method) | | I_{FSM} | 70 | | | | Amps |
| Forward voltage (note 1) | $I_F=3A$ | V_F | TYP. | 1.7 | MAX. | / | Volts |
| | $I_F=5A$ | | TYP. | 1.9 | MAX. | / | |
| | $I_F=8A$ | | TYP. | 2.0 | MAX. | 2.4 | |
| Reverse current at rated DC blocking voltage(Note 1) | $T_A=25^{\circ}C$ | I_R | TYP. | 1 | MAX. | 5 | μA |
| | $T_A=125^{\circ}C$ | | TYP. | 10 | MAX. | 50 | |
| Maximum Reverse Recovery Time (Note 2) | | T_{rr} | 35 | | | | ns |
| Typical thermal resistance | | $R_{\theta JC}$ | 2.5 | | | | $^{\circ}C/W$ |
| Operating junction temperature range | | T_J | -55 to+150 | | | | $^{\circ}C$ |
| Storage temperature range | | T_{STG} | -55 to+150 | | | | $^{\circ}C$ |

- Notes:** 1. Pulse test: 300 μs pulse width,1% duty cycle
2. Reverse recovery test conditions $I_F=0.5A,I_R=1.0A,I_{rr}=0.25A$

RATINGS AND CHARACTERISTIC CURVES MUR880

FIG.1-FORWARD CURRENT DERATING CURVE

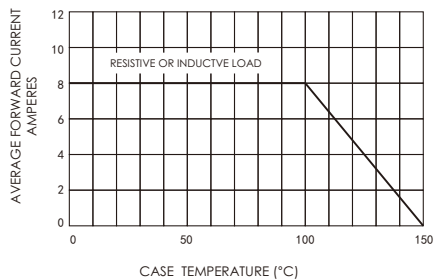


FIG.3-TYPICAL INSTANTANEOUS FORWARD CHARACTERISTICS

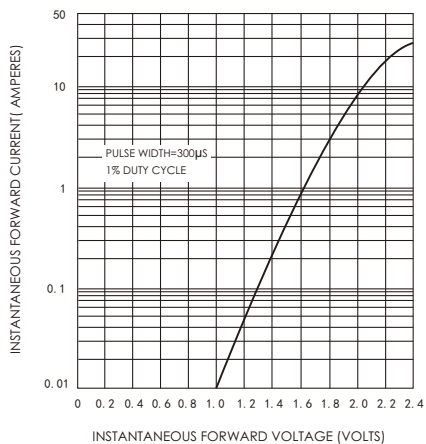


FIG.2-MAXIMUM NON-REPETITIVE PEAK FORWARD SURGE CURRENT

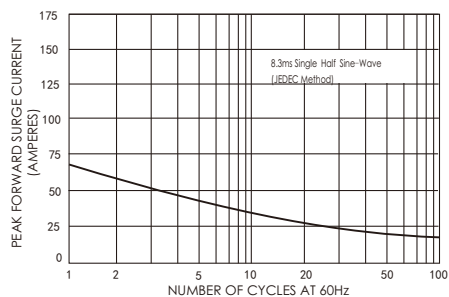


FIG.4-TYPICAL REVERSE CHARACTERISTICS

