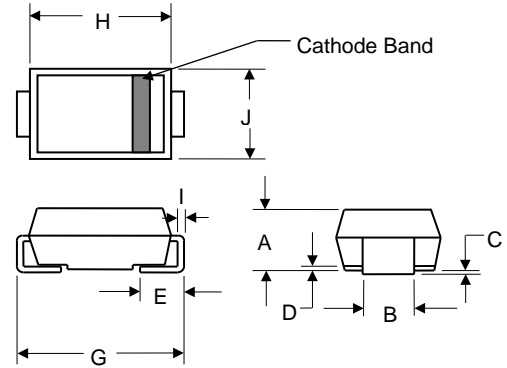


### Features

- \* LOW PROFILE PACKAGE
- \* PLASTIC PACKAGE HAS UNDERWRITERS LABORATORY 94V-0
- \* IDEAL FOR SURFACE MOUNTED APPLICATION
- \* GLASS PASSIVATED CHIP JUNCTION
- \* BUILT-IN STRAIN RELIEF DESIGN
- \* ULTRA FAST RECOVERY TIME FOR HIGH EFFICIENT
- \* HIGH TEMPERATURE SOLDERING: 260°C/10 SECONDS AT TERMINALS



**RoHS**  
COMPLIANT



DO-214 AA (SMB)				
DIM	INCHES		MM	
	MIN	MAX	MIN	MAX
A	0.084	0.096	2.13	2.44
B	0.073	0.085	1.85	2.15
C	0.002	0.008	0.051	0.2
D	-----	0.02	-----	0.51
E	0.03	0.06	0.76	1.52
G	0.205	0.22	5.21	5.59
H	0.16	0.18	4.06	4.57
I	0.006	0.012	0.152	0.305
J	0.13	0.155	3.3	3.94

### Mechanical Data

- \* CASE: JEDEC DO-214AA MOLDED PLASTIC BODY, DIMENSIONS IN INCHES AND MILLIMETERS
- \* TERMINAL: SOLDER PLATED, SOLDERABLE PER MIL-STD-750 METHOD 2026
- \* POLARITY: COLOR BAND DENOTES CATHODE
- \* WEIGHT: 0.093 GRAMS



## MURS205 THRU MURS260 2A ULTRA FAST RECOVERY SURFACE MOUNT RECTIFIERS

### Maximum Ratings And Electrical Characteristics Ratings (T<sub>A</sub>=25°C unless otherwise noted)

RATINGS	SYMBOL	MURS205	MURS210	MURS215	MURS220	MURS240	MURS260	UNITS
MAXIMUM RECURRENT PEAK REVERSE VOLTAGE	V <sub>RRM</sub>	50	100	150	200	400	600	V
MAXIMUM RMS VOLTAGE	V <sub>RMS</sub>	35	70	105	140	280	420	V
MAXIMUM DC BLOCKING VOLTAGE	V <sub>DC</sub>	50	100	150	200	400	600	V
MAXIMUM AVERAGE FORWARD RECTIFIED CURRENT AT T <sub>L</sub> =75°C	I <sub>O</sub>	2						A
PEAK FORWARD SURGE CURRENT, 8.3ms SINGLE HALF SINE-WAVE SUPERIMPOSED ON RATED LOAD	I <sub>FSM</sub>	40				35		A
TYPICAL JUNCTION CAPACITANCE (NOTE 1)	C <sub>J</sub>	50						PF
TYPICAL THERMAL RESISTANCE (NOTE 2)	R <sub>θJL</sub>	15						°C/W
STORAGE TEMPERATURE RANGE	T <sub>STG</sub>	-55 to + 150						°C
OPERATING TEMPERATURE RANGE	T <sub>OP</sub>	-55 to + 150						°C

### Electrical Characteristics (T<sub>A</sub>=25°C unless otherwise noted)

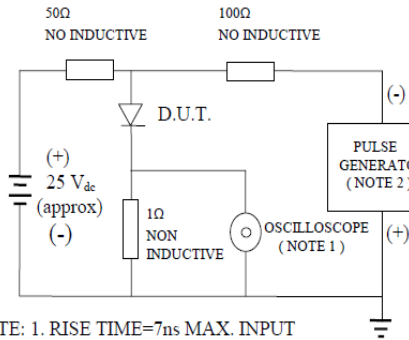
CHARACTERISTICS	SYMBOL	MURS205	MURS210	MURS215	MURS220	MURS240	MURS260	UNITS
MAXIMUM FORWARD VOLTAGE AT I <sub>O</sub> DC	V <sub>F</sub>	0.94				1.45		V
MAXIMUM DC REVERSE CURRENT AT T <sub>A</sub> =25°C	I <sub>R</sub>	2				5		μA
MAXIMUM DC REVERSE CURRENT AT T <sub>A</sub> =125°C	I <sub>R</sub>	250						μA
MAXIMUM REVERSE RECOVERY TIME (NOTE 3)	T <sub>RR</sub>	20				50		nS

**NOTES :**

- MEASURED AT 1 MHZ AND APPLIED REVERSE VOLTAGE OF 4.0 VOLTS
- THERMAL RESISTANCE FROM JUNCTION TO AMBIENT AND JUNCTION TO LEAD P.C.B. MOUNTED ON 0.3x0.3"( 8.0x8.0 mm) COPPER PAD AREAS
- REVERSE RECOVERY TEST CONDITIONS: I<sub>F</sub>=0.5A, I<sub>R</sub>=1.0A, I<sub>RR</sub>=0.25A

### Ratings and Characteristic Curves

FIG. 1-TEST CIRCUIT DIAGRAM AND REVERSE RECOVERY TIME CHARACTERISTIC



NOTE: 1. RISE TIME=7ns MAX. INPUT IMPEDANCE=1 MOhms 22PF  
 2. RISE TIME =10ns MAX. SOURCE IMPEDANCE=50 OHMS

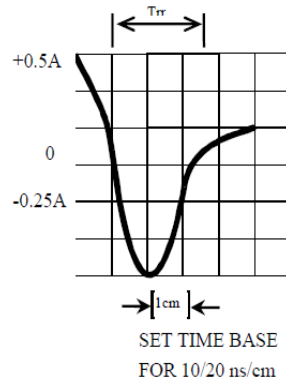


FIG. 2-TYPICAL FORWARD CURRENT DERATING CURVE

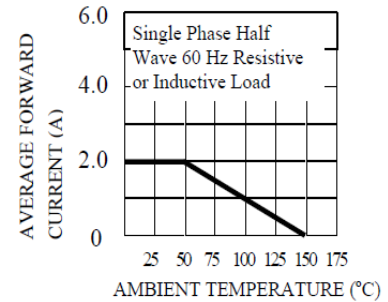


FIG. 3-TYPICAL REVERSE CHARACTERISTICS

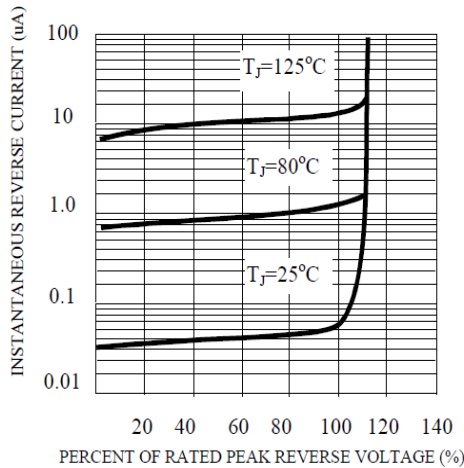


FIG. 4-TYPICAL INSTANTANEOUS FORWARD CHARACTERISTICS

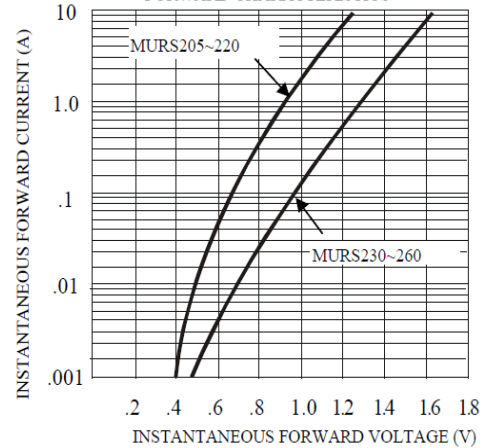


FIG. 5-MAXIMUM NON-REPETITIVE FORWARD SURGE CURRENT

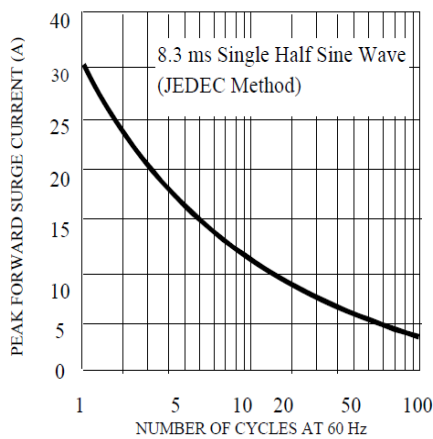
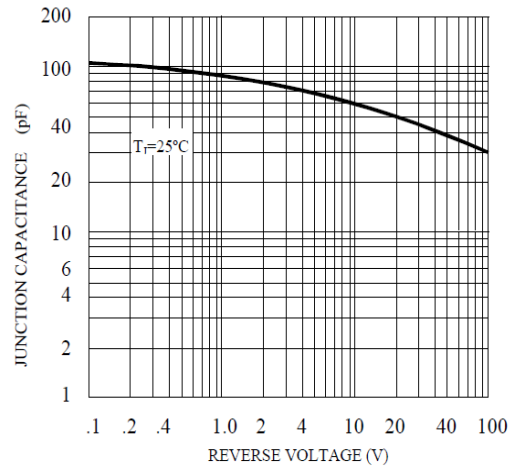


FIG. 6-TYPICAL JUNCTION CAPACITANCE





**MURS205 THRU MURS260**  
**2A ULTRA FAST RECOVERY SURFACE MOUNT RECTIFIERS**

**Ordering Information**

<b>Part No.</b>	<b>Package</b>	<b>Packing Code</b>	<b>Packing</b>
MURS205 THRU MURS260	DO-214 AA (SMB)	R30	3000pcs/Reel

**Disclaimer**

Specifications of the products displayed herein are subject to change without notice. JGD or anyone on its behalf, assumes no responsibility or liability for any errors inaccuracies.

Information contained herein is intended to provide a product description only. No license, express or implied, to any intellectual property rights is granted by this document. Except as provided in JGD's terms and conditions of sale for such products, JGD assumes no liability whatsoever, and disclaims any express or implied warranty, relating to sale and/or use of JGD products including liability or warranties relating to fitness for a particular purpose, merchantability, or infringement of any patent, copyright, or other intellectual property right.

The products shown herein are not designed for use in medical, life-saving, or life-sustaining applications. Customers using or selling these products for use in such applications do so at their own risk and agree to fully indemnify JGD for any damages resulting from such improper use or sale.